



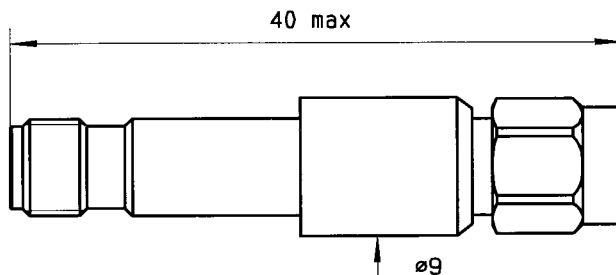
**WIDE BAND COAXIAL DETECTOR**

issue  
21.sep.86

Page  
1 / 2

**DRAWING**

SMA female  
VIDEO output



SMA male  
RF input

General tolerances: +/- 0.5 mm

**R F CHARACTERISTICS**

|                                     |                    |                      |
|-------------------------------------|--------------------|----------------------|
| FREQUENCY RANGE                     | :                  | 0.01- 18 GHz         |
| IMPEDANCE                           | :                  | 50 Ohms              |
| V.S.W.R                             | from 0.01 to 8 GHz | : <= 1.35            |
|                                     | from 8 to 18 GHz   | : <= 1.50            |
| FREQUENCY RESPONSE                  | (0.01 - 8 GHz)     | : ±0.2 dB/octave     |
|                                     | (0.01 - 12.4 GHz)  | : ±0.5 dB/octave     |
|                                     | (0.01 - 18 GHz)    | : ±1 dB/octave       |
| SENSITIVITY                         | :                  |                      |
| Low level (Input power : < -20 dBm) | :                  | > 500 mV / mW        |
| High level (Input power : =0.35 mW) | :                  | >100 mV              |
| POLARITY                            | :                  | negative             |
| TANGENTIAL SENSITIVITY              | :                  | >= -44 dBm           |
| SQUARE LOW RESPONSE LIMIT           | :                  | -12 dBm              |
| VIDEO IMPEDANCE                     | :                  | 1 KOhm typical       |
| FILTERING CAPACITY                  | :                  | 20 pF typical        |
| AVERAGE POWER                       | :                  | 200 mW               |
| DIODE                               | :                  | schottky 'zero bias' |

**MECHANICAL CHARACTERISTICS**

|                        |   |            |                 |
|------------------------|---|------------|-----------------|
| INPUT CONNECTOR        | : | SMA male   | per MIL-C 39012 |
| VIDEO OUTPUT CONNECTOR | : | SMA female | per MIL-C 39012 |
| WEIGHT                 | : | < 12 g     |                 |

**ENVIRONMENTAL CHARACTERISTICS**

|                             |             |   |                        |
|-----------------------------|-------------|---|------------------------|
| OPERATING TEMPERATURE RANGE | (°C)        | : | -25 , +70              |
| STORAGE TEMPERATURE RANGE   | (°C)        | : | -65 , +120             |
| VIBRATIONS                  | MIL STD 202 | : | Method 204 condition D |
| SHOCKS                      | MIL STD 202 | : | Method 213 condition I |

**CREATION**

N° :  
PEN/EP:cat  
Name:KL  
Date:21.sep.86  
APP.:AF

ISSUE

REVISIONS

NAME

APPR.

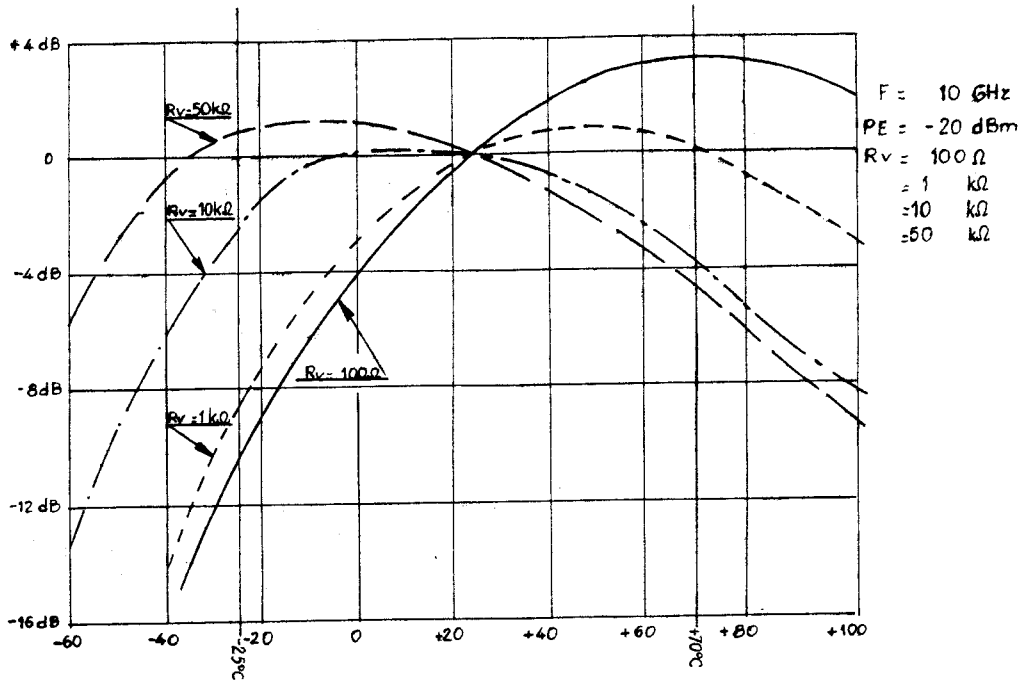
**RADIALL®**

101, rue P. Hoffmann -Z.I Ouest-  
93116 ROSNY/BOIS Cedex-FRANCE  
Phone:33(1)49353535  
Fax :33(1)48546363  
Twx RADIA 235220F

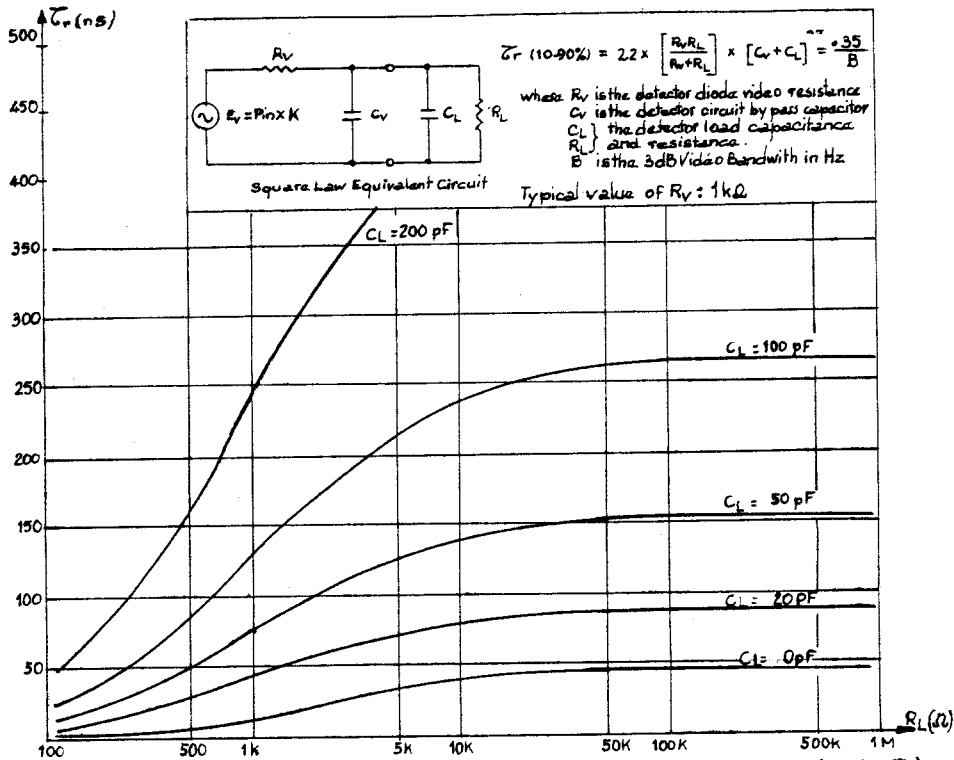
This information is given as an indication. In the continual goal to improve our products, we reserve the right to make any modifications judged necessary

4112-9212

TITLE WIDE BAND COAXIAL DETECTORS LTR. A



Typical output response (dB) with temperature (°C)



Typical video rise time  $\tau_r$  (ns) with load impedance ( $\Omega/pF$ )

Tentative data subject to change without notice.

|      |                  |           |     |           |      |      |  |
|------|------------------|-----------|-----|-----------|------|------|--|
| PEN  | QUALITY Dpt App. |           |     |           |      |      |  |
|      |                  |           |     |           |      |      |  |
| PAGE | DATE             | NAME      | LTR | REVISIONS | DATE | APP. |  |
| 2 /  | 30/09/86         | K. LUCIEN |     |           |      |      |  |

## X-ON Electronics

Largest Supplier of Electrical and Electronic Components

*Click to view similar products for [RF Connectors / Coaxial Connectors](#) category:*

*Click to view products by [Radiall](#) manufacturer:*

Other Similar products are found below :

[8915-1511-000](#) [89674-0827](#) [6001-7071-019](#) [6002-7051-003](#) [6002-7551-202](#) [6059674-1](#) [619550-1](#) [630059-000](#) [M39030/3-01N](#) [6500-7071-046](#) [6769](#) [CX050L2AQ](#) [7002-1541-010](#) [7002-1542-011](#) [7004-1512-000](#) [7009-1511-004](#) [7010-1511-000](#) [7029-1511-060](#) [7101-1541-010](#) [7101-1571-002](#) [7145-1521-002](#) [7203-1571-003](#) [7209-1511-011](#) [7210-1511-015](#) [7210-1511-019](#) [73137-5015](#) [73216-2241](#) [73404-2300](#) [7405-1521-005](#) [7405-1521-802](#) [8527](#) [8547](#) [FS11V](#) [877931](#) [8808-1511-001](#) [9049-9513-000](#) [9074-9513-000](#) [9101-9573-002](#) [910A205F](#) [9130-9573-002](#) [PL11SC-026](#) [PL375-33](#) [PL40-5](#) [PL74C-221](#) [PL75MC-217](#) [PL803-7](#) [980-8666-005](#) [1200690078](#) [1-201144-1](#) [R107003010W](#)