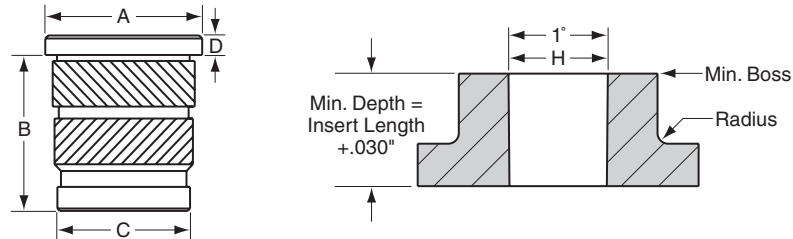




## Straight hole flanged / headed

HC Series Inserts offer the same benefits as the C Series plus a flanged head. This insert offers a large contact area for electrical connections and greater pull-out strengths for reverse entry applications.

Recommended Hole Size – See chart for installation hole size.  
Additional information can be found on page 5, Design Guidelines.



INCH		METRIC		A	B	C	D	Hole H	Min. Boss
Thread Size	Part Number	Thread Size	Part Number	±.004	±.004	±.004	Flange Thickness	+0.003 –.000	
2-56	H256 x 157C	M2.0 x 0.4	HM20 x 157C	.188	.157	.123	.018	.126	.252
4-40	H440 x 226C	M2.5 x 0.45	HM25 x 226C	.218	.226	.154	.021	.157	.314
		M3.0 x 0.5	HM30 x 226C	.218	.226	.154	.021	.157	.314
6-32	H632 x 180C	M3.5 x 0.6	HM35 x 180C†	.250	.180	.185	.027	.188	.376
	H632 x 281C		HM35 x 281C	.250	.281	.185	.027	.188	.376
8-32	H832 x 185C	M4.0 x 0.7	HM40 x 185C	.281	.185	.218	.033	.221	.442
	H832 x 250C		HM40 x 250C	.281	.250	.218	.033	.221	.442
	H832 x 321C		HM40 x 321C	.281	.321	.218	.033	.221	.442
10-24	H1024 x 225C	M5.0 x 0.8	HM50 x 225C†	.312	.225	.249	.040	.252	.504
	H1024 x 250C		HM50 x 250C	.312	.250	.249	.040	.252	.504
	H1024 x 375C		HM50 x 375C	.312	.375	.249	.040	.252	.504
10-32	H1032 x 225C			.312	.225	.249	.040	.252	.504
	H1032 x 250C			.312	.250	.249	.040	.252	.504
	H1032 x 375C			.312	.375	.249	.040	.252	.504
1/4-20	H2520 x 300C	M6.0 x 1.0	HM60 x 300C	.375	.300	.312	.050	.315	.630
	H2520 x 500C		HM60 x 500C	.375	.500	.312	.050	.315	.630
1/4-28	H2528 x 300C			.375	.300	.312	.050	.315	.630
	H2528 x 500C			.375	.500	.312	.050	.315	.630
5/16-18	H3118 x 500C	M8.0 x 1.25	HM80 x 500C	.437	.500	.374	.050	.377	.754
5/16-24	H3124 x 500C			.437	.500	.374	.050	.377	.754
3/8-16	H3816 x 500C	M10.0 x 1.5	HM100 x 500C†	.550	.500	.465	.065	.468	.936
3/8-24	H3824 x 500C			.550	.500	.465	.065	.468	.936

*Stainless Steel Inserts – Class 3A/4H screw must pass with finger torque, standard class go gage may stop on last thread. • Part numbers for Stainless Steel Inserts are the same as listed in the chart, but ending with -SS.*

† Non-Stocking Item – Minimum Order May Apply

## X-ON Electronics

Largest Supplier of Electrical and Electronic Components

*Click to view similar products for [Mounting Fixings](#) category:*

*Click to view products by [RAF Electronic Hardware](#) manufacturer:*

Other Similar products are found below :

[5912235-2](#) [007541](#) [627](#) [M3783-7001](#) [71-074914-006](#) [71-441549-19S](#) [75-69211-3P](#) [75-69214-6P](#) [75-69220-27S](#) [75-69224-5S](#) [7717-8DAP](#)  
[85043GULPR](#) [85047GULPT](#) [FPK-02-R10](#) [PMS27488-001-01](#) [1-18023-0](#) [H-118-2](#) [D83999/20WC8SN](#) [DB1](#) [1302030464](#) [DC31-14W19PN](#)  
[DC31-14W19PW](#) [DC32-18W32SN](#) [DC36-18-32SW](#) [DC36-18-32SX](#) [DC37-14-19PW](#) [DC37-22-21PX](#) [1302010957](#) [1302263564](#)  
[1302340393](#) [1404-0016-78](#) [14540](#) [149331-9811](#) [1561-60](#) [1566](#) [1566](#) [BR16A](#) [HS5659MB98PN](#) [NT20SATT01](#) [22594-8](#) [KBB-141](#)  
[89078GBEPR](#) [915060](#) [SF4011-60101](#) [97-CS-50](#) [1671](#) [LS10215R14-15PN](#) [LS10215R14-7PN L/C](#) [1855-54](#) [T-2085-SP](#)