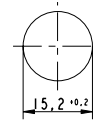


1

**Pushbutton, opaque, mounting hole diameter 15.2 mm, 250 V/0.7 A**



Pict.: Screw terminals, red

**Technical data**

**General information**

Form of lens protruding lens  
 Colour of lens see order block  
 Form of collar round

**Dimensions**

Diameter of collar 19 mm  
 Overall height 8.2 mm  
 Mounting depth 21.5 mm  
 Mounting hole 15.2 mm

**Mechanical design**

Mounting ring nut  
 Terminals see order block  
 Contact system bridge contact  
 Contact function momentary  
 Contact arrangement see order block  
 Contact materials Ag  
 Illuminability no  
 Lamp socket no

**Mechanical characteristics**

Operating force max. 7.5 N  
 Operating travel 3 mm  
 Switching travel NC 1.2 mm  
 Switching travel NO 2.0 mm  
 Robustness min. 100 N

**Electrical characteristics**

Rated voltage AC max. 250 V  
 Rated current max. 0.7 A  
 Contact resistance when new max. 50 mΩ  
 Contact resistance acc. to life max. 300 mΩ

**Other specifications**

Operating life 25000  
 Degree of protection from front side IP40 (IP65 with sealing cap)  
 Ambient temp. operating min. -25 °C  
 Ambient temp. operating max. +85 °C  
 Storage temperature min. -40 °C  
 Storage temperature max. +90 °C  
 Resistance to constant environment according to IEC 600 68-2-3 and 2-30  
 Resistance at variable environment according to IEC 600 68-2-14 and 2-33  
 Weight 7 g  
 Approvals ENEC T 85/55  
 Flame class acc. to UL 94 V 0  
 Hot wire ignition acc. to IEC 60695-2-1 yes

Other Pushb.

**Accessories Pushbutton, opaque, mounting hole diameter 15.2 mm, 250 V/0.7 A**

Description	Photo	Order no.	Page
Sealing cap, transparent (IP65)		<b>5.52.008.115/0000</b>	
Fixing spanner M 15, M 16		<b>5.58.002.019/0105</b>	5 - 23



## X-ON Electronics

Largest Supplier of Electrical and Electronic Components

*Click to view similar products for [Pushbutton Switches](#) category:*

*Click to view products by [Rafi](#) manufacturer:*

Other Similar products are found below :

[8940K2012](#) [LW1L-M1C10V-A](#) [LW1L-M1C70-A](#) [LW2L-A1C20M-GD](#) [LW2L-M1C20M-A](#) [60324L](#) [M22-D-R-GB0/K11](#) [M7E-HRN2](#)  
[67021K512](#) [67081K512X](#) [701PB580](#) [7199K101](#) [810K12910](#) [810KSV30B](#) [MML21EA2ADK](#) [MML21KA3ABK](#) [MML23KA3AC05K-001](#)  
[MML23KW3AA01W](#) [8418K2](#) [8442K3](#) [8450K1](#) [860K11911T01A](#) [861901](#) [861K11911T01A07](#) [861K13810T00A14](#) [861K13911](#)  
[8646AB6X718UL](#) [8646ABUL](#) [9001KXRK](#) [907AYY100](#) [PMHD155A1](#) [9533CD4+U574+U4922](#) [95-414.000](#) [99-450.837](#) [99-453.837](#)  
[PV3H2B0NN-341](#) [1203MRA](#) [A22NZBGANGA](#) [A22NZBNANGA](#) [A22NZMPATRA](#) [A2PMA1X03EC56](#) [A3A-5123-02](#) [A3A-7140](#) [A3A-7310](#) [A3A-7340](#) [A3U-TMW-A2C-5M](#) [A595](#) [12037A2ULCSA](#) [ABD122N-B](#) [1211390004](#)