



MS2.1 – Two in One Cable Tacker

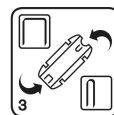
For the DIY and home user who demands craftsman level performance and versatility. The MS2.1 is a highly flexible staple gun that can tackle both normal and cable fastening with confidence. Features include a 2-step force adjuster that can be set to reflect different types of material and the length of staple being used. Ideal for regular use when fastening low voltage cables such as speaker, telephone, antenna or computer cables. The MS2.1 can also be used for furniture upholstery, decorative work with diverse textile types or fastening of carpets, quilts or leather.

Features:

- Dual magazine for fine wire staples and cable staples.
- 2-step force adjuster can be set to reflect different types of material and the length of staple being used.
- Projection nose to access corners
- Ergonomic handle with lock function for easy storage
- Made in Sweden
- 3 year guarantee

Specification:

- For cable staples 7, 10-14mm
- For staples 53, 6-12 mm
- Supplied in Touch & Feel blister pack



Description	Packaging	Art. No	EAN	Packaging unit
MS2.1 Cable Tacker	T&F Clamshell West	5000625	4051661020162	10 pcs/outer

X-ON Electronics

Largest Supplier of Electrical and Electronic Components

Click to view similar products for [Hand Tools](#) category:

Click to view products by [Rapid manufacturer](#):

Other Similar products are found below :

[58284-1](#) [59773-1](#) [662908-1](#) [68764-0001](#) [690619-6](#) [7-354778-7](#) [768531-1](#) [810131](#) [81541-16](#) [854183-1](#) [854358-1](#) [90855-1](#) [992258-1](#) [1-21046-3](#) [1-22278-0](#) [1-22278-2](#) [1-24954-2](#) [125529-5](#) [126513-1](#) [1-305579-8](#) [1-306027-0](#) [1320846-1](#) [1338968-2](#) [1-354779-0](#) [1-354779-2](#) [1-354779-4](#) [1424443-1](#) [1424266-1](#) [1424289-1](#) [1424444-1](#) [1532195-2](#) [1538773-2](#) [1-692134-3](#) [HT-920A-124-HTELE-RPL-KIT](#) [1976923-1](#) [1976969-1](#) [2063795-1](#) [2-21002-1](#) [2-21002-4](#) [2-21002-7](#) [2-21002-9](#) [2-21004-0](#) [229707-1](#) [911737-2](#) [91348-2](#) [925980-R](#) [301185-9](#) [983533-1](#) [1-694433-7](#) [AD-1547-1-INSTALL-TOOL](#)