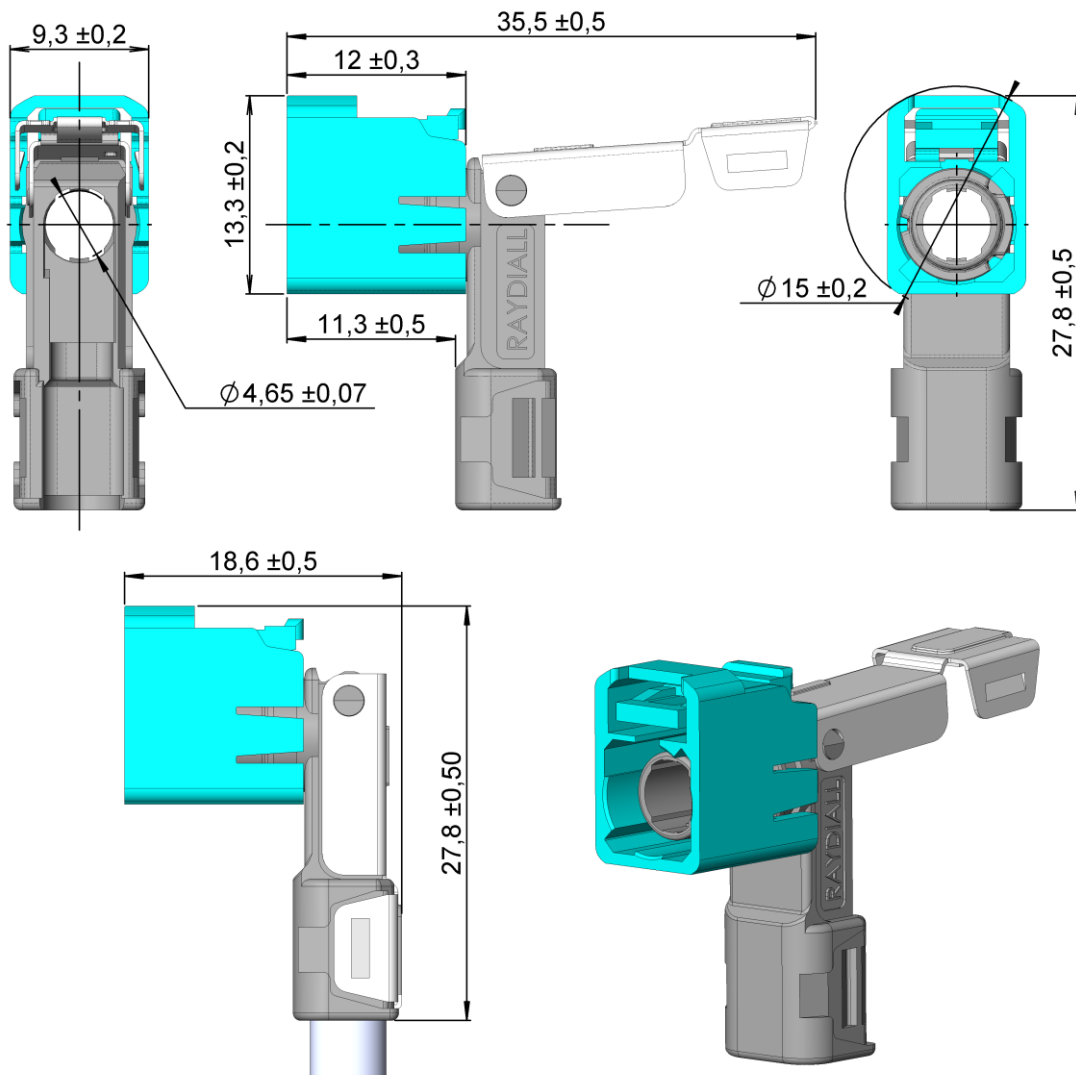


Fakra R3C – Right-Angle housing  
Cable type **RG58** (5/50) & **RG59** (5/75)

R197.125.\_81

TECHNICAL DATA SHEET

Rev	Date	Edited	Approved	Validated	Modification
1	14/12/2018	C.Chavanne	Y.Gay	R.Chantre	Creation



All dimensions are in mm

COMPONENTS	MATERIALS	UL CLASSIFICATION	COLOR
Housing	Polyamide	UL 94 V-2	See page 2
Cap	Inox		
Sleeve	Die Cast	Chromatation	Tint variation may happen depending on moulding shots

Fakra R3C – Right-Angle housing  
Cable type **RG58** (5/50) & **RG59** (5/75)

R197.125.\_81

TECHNICAL DATA SHEET

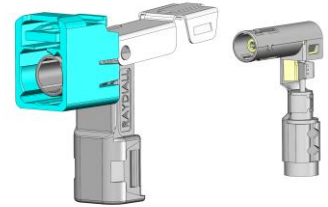
**Interface**

According to

**ISO 20860-1**

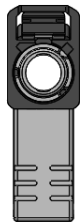
**Application**

This housing is part of an assembly to create a complete R-A R3C connector. It has to be assembled with a terminal.  
Refer to **Assembly Instructions AI\_R-AR3C** to get the corresponding P/N.

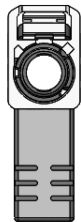


**Codings**

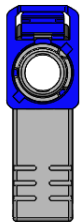
To obtain the complete part number, please fill in the blank “\_” with the coding letter.



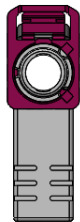
**A**  
Black  
RAL 9005



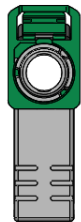
**B**  
Crème White  
RAL 9001



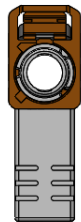
**C**  
Blue  
RAL 5005



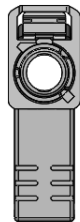
**D**  
Bordeaux  
RAL 4004



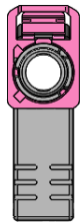
**E**  
Green  
RAL 6002



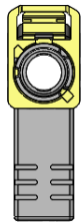
**F**  
Brown  
RAL 8011



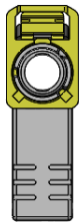
**G**  
Grey  
RAL 7031



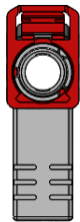
**H**  
Violet  
RAL 4003



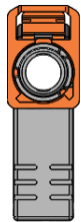
**I**  
Beige  
RAL 1001



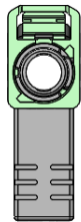
**K**  
Curry  
RAL 1027



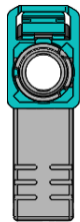
**L**  
Carmin  
RAL 3002



**M**  
Pastel Orange  
RAL 2003



**N**  
Pastel Green  
RAL 6019



**Z**  
Water blue  
RAL 5021

**Net Weight:** 4.93 g

**Storage condition & Shelf Life**

Boxes should be stored indoors, in its original packaging (box + plastic bag), in a controlled climate environment not exceeding -20°C/+40°C and maximum 70% relative humidity. The boxes should be protected from direct sunlight and should be used on a "first-in, first-out" basis.

It is recommended to use this reference within 1 year from the date of manufacture when stored according the recommended storage condition.

**Product Handling**

Care must be taken when handling the boxes of housings. They must not fall. Indeed it might unwillingly lock the cap, which makes the housing un-usable.

Fakra R3C – Right-Angle housing  
Cable type **RG58** (5/50) & **RG59** (5/75)

R197.125.\_81

TECHNICAL DATA SHEET

**Packaging:** 1 welded plastic bag inside cardboard box

Number of housings/ Plastic bag: 1500 pcs / box: 1500 Pcs



**Cardboard box**

Dimensions (WxDxH): 40 x 20 x 20 cm

Weight: ≈ 7,8 kg



**Plastic bag**

## X-ON Electronics

Largest Supplier of Electrical and Electronic Components

*Click to view similar products for [RF Connectors](#) / [Coaxial Connectors](#) category:*

*Click to view products by [Raydiall](#) manufacturer:*

Other Similar products are found below :

[8915-1511-000](#) [89674-0827](#) [6001-7071-019](#) [6002-7051-003](#) [6059674-1](#) [619550-1](#) [630059-000](#) [M39030/3-01N](#) [6500-7071-046](#) [6769](#)  
[CX050L2AQ](#) [7002-1541-010](#) [7002-1542-011](#) [7002-1572-002](#) [7003-1542-011](#) [7004-1512-000](#) [7009-1511-004](#) [7010-1511-000](#) [7029-1511-](#)  
[060](#) [7101-1541-010](#) [7101-1571-002](#) [7145-1521-002](#) [7203-1571-003](#) [7209-1511-011](#) [7210-1511-015](#) [7210-1511-019](#) [73137-5015](#) [73216-](#)  
[2241](#) [73404-2300](#) [7405-1521-005](#) [7405-1521-802](#) [8527](#) [8547](#) [FS11V](#) [9049-9513-000](#) [9074-9513-000](#) [9101-9573-002](#) [910A205F](#) [9130-](#)  
[9573-002](#) [PL11SC-026](#) [PL375-33](#) [PL40-5](#) [PL74C-221](#) [PL75MC-217](#) [PL803-7](#) [980-8666-005](#) [1200690078](#) [1-201144-1](#) [R107003010W](#)  
[R110A172100](#)