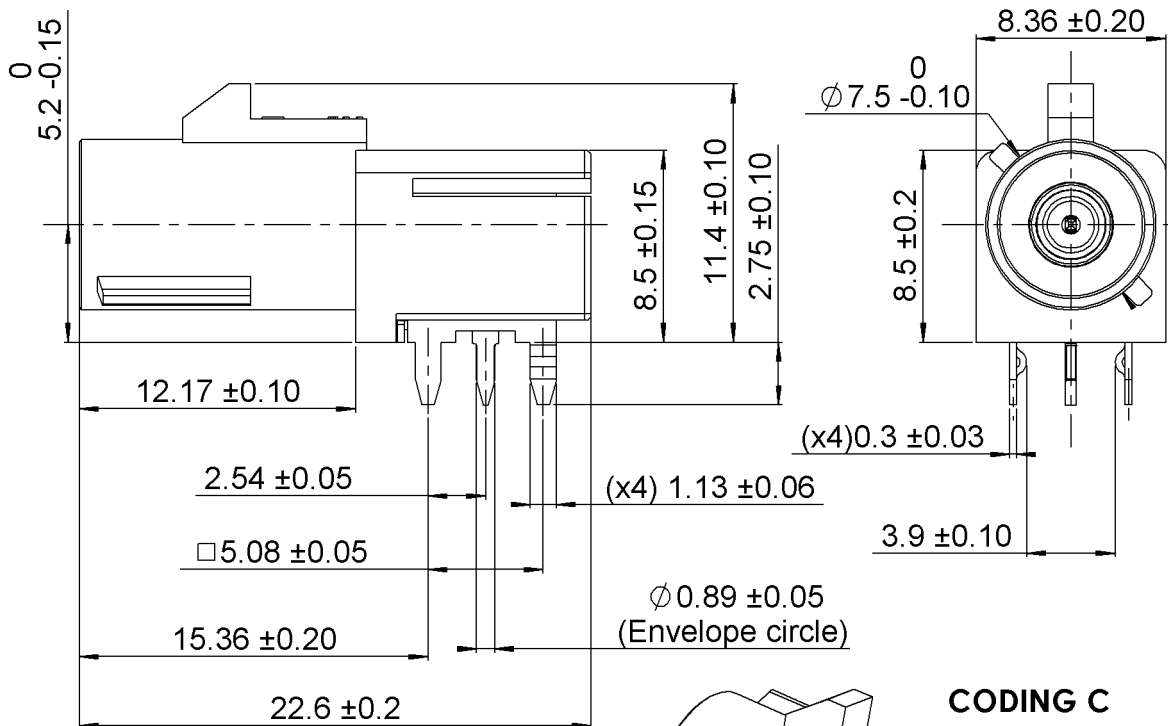


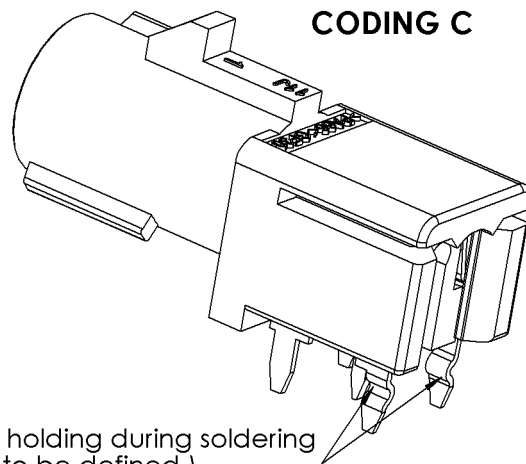
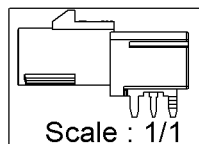
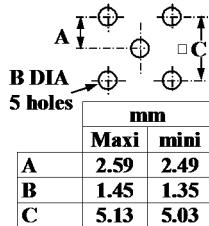
R/A MALE RECEPTACLE FOR PCB
PICOT A SOUDER - COND. PLAT. PAR 225

R197.166.C14

Series : **SMB**
CARLOCK



PANEL CUT OUT



Retention system for holding during soldering
 (max insertion force to be defined)

All dimensions are in mm.

COMPONENTS	MATERIALS	PLATING	(µm)
BODY	BRASS HR (BL9)	TIN 3 OVER NICKEL 2	
CENTER CONTACT	BRASS HR (BL9)	SELECTIVE GOLD+ SELECTIVE TIN	
OUTER CONTACT	-	-	
INSULATOR	PA 6.6 30% GF (Polyamide)	-	
GASKET	-	-	
OTHERS PARTS	-	-	
-	-	-	
-	-	-	
HOUSING	PA66 or PA46 30% GF (Polyamide)	UL CLASSIFICATION	COLOR
		UL 94HB	WHITE RAL 9001

* According to FAKRA specification

Issue : 1536 A

In the effort to improve our products, we reserve the right to make changes judged to be necessary.



R/A MALE RECEPTACLE FOR PCB
PICOT A SOUDER - COND. PLAT. PAR 225

R197.166.C14

Series : **SMB**
CARLOCK

PACKAGING

SPECIFICATION

Standard	Unit	Other
225	-	Contact us

ELECTRICAL CHARACTERISTICS

ENVIRONMENTAL

Impedance **50** Ω
 Frequency **0-3** GHz
 VSWR **1.42*** + **0,0000** x F(GHz) Maxi
 Insertion loss **NA** √F(GHz) dB Maxi
 RF leakage - (**NA** - F(GHz)) dB Maxi
 Voltage rating **335** Veff Maxi
 Dielectric withstanding voltage **1000** Veff mini
 Insulation resistance **1000** MΩ mini

Operating temperature **-40/+90** ° C
 Hermetic seal **NA** Atm.cm3/s
 Panel leakage **NA**

OTHER CHARACTERISTICS

Assembly instruction

Others :
 *Coax Transmission Line Only

Connector to be handplaced on PCB

MECHANICAL CHARACTERISTICS

Center contact retention
 Axial force – Mating end **10** N mini
 Axial force – Opposite end **10** N mini
 Torque **NA** N.cm mini

Recommended torque
 Mating **NA** N.cm
 Panel nut **NA** N.cm

Mating life **100** Cycles mini
 Weight **1,8400** g

PCB insertion force : Maximum insertion force **TBD**

Issue : 1536 A

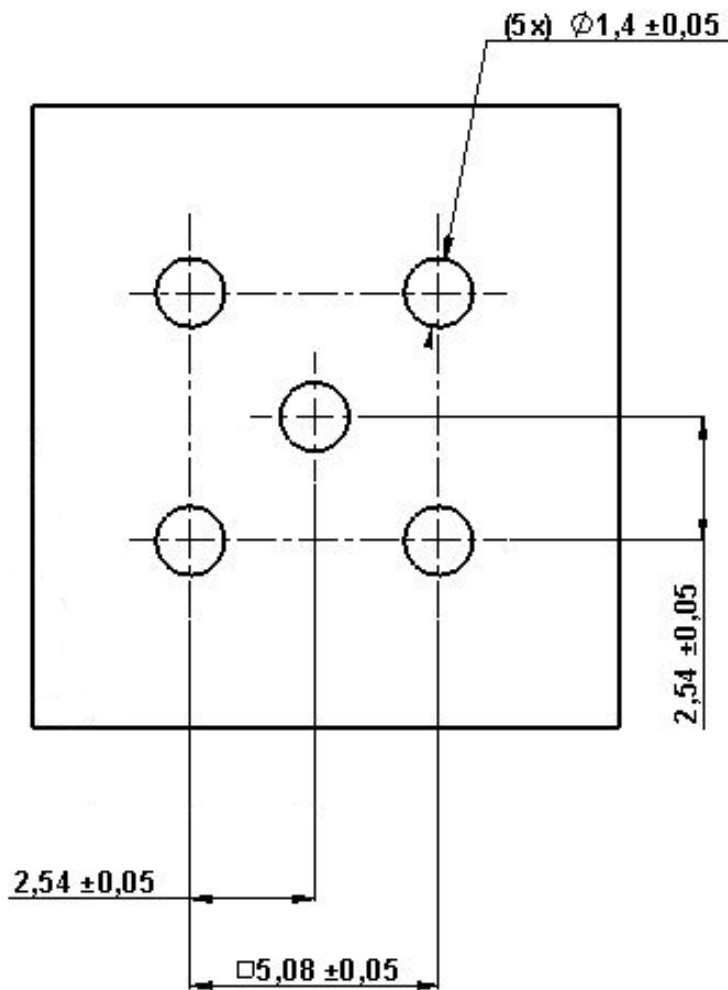
In the effort to improve our products, we reserve the right to make changes judged to be necessary.



R/A MALE RECEPTACLE FOR PCB
PICOT A SOUDER - COND. PLAT. PAR 225

R197.166.C14
 Series : **SMB**
CARLOCK

PCB CUT OUT



Issue : 1536 A

In the effort to improve our products, we reserve the right to make changes judged to be necessary.

R/A MALE RECEPTACLE FOR PCB
PICOT A SOUDER - COND. PLAT. PAR 225

R197.166.C14

Series : **SMB**
CARLOCK

PACKAGING

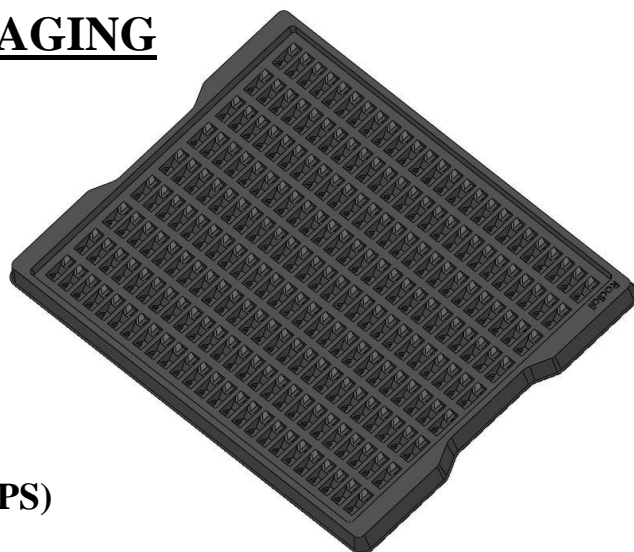
⇒ TRAY:

Hot formed tray

External dimensions : **390 x 300 x 17 mm**

Material : **Electrostatic black Polyester (PS)**

Number of connectors per tray: **225**



⇒ CARTON BOX:

RADIALL standard carton box : **20L**

Inside dimensions : **390 x 300 x 200 mm**

Number of trays per carton box : **15 (14 + 1 empty on the top for the protection)**

Number of connectors per carton box : **3150**

Minimum Order Quantity of connectors
needs to be multiple by : **3150**

X-ON Electronics

Largest Supplier of Electrical and Electronic Components

Click to view similar products for [RF Connectors](#) / [Coaxial Connectors](#) category:

Click to view products by [Raydiall](#) manufacturer:

Other Similar products are found below :

[8915-1511-000](#) [89674-0827](#) [6001-7071-019](#) [6002-7051-003](#) [6002-7551-202](#) [6059674-1](#) [619550-1](#) [630059-000](#) [M39030/3-01N](#) [M3933/25-36N](#) [6500-7071-046](#) [6769](#) [CX050L2AQ](#) [7002-1542-011](#) [7002-1572-002](#) [7004-1512-000](#) [7009-1511-004](#) [7010-1511-000](#) [7029-1511-060](#) [7101-1541-010](#) [7101-1571-002](#) [7105-1521-002](#) [7145-1521-002](#) [7203-1571-003](#) [7209-1511-011](#) [7210-1511-015](#) [7210-1511-019](#) [73137-5015](#) [73216-2241](#) [7325-1512-000](#) [73404-2300](#) [7405-1521-005](#) [7405-1521-802](#) [7406-1521-005](#) [8527](#) [8547](#) [FS11V](#) [8808-1511-001](#) [9049-9513-000](#) [9074-9513-000](#) [9101-9573-002](#) [910A205F](#) [9130-9573-002](#) [PL11SC-026](#) [PL375-33](#) [PL40-5](#) [PL71-9](#) [PL74C-221](#) [PL75MC-217](#) [PL803-7](#)