

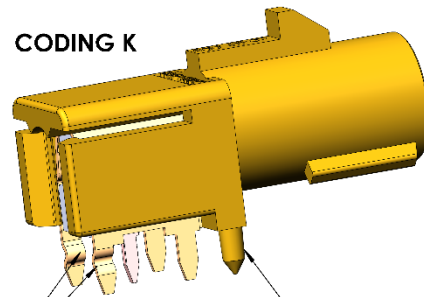
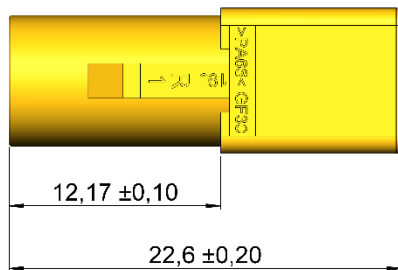
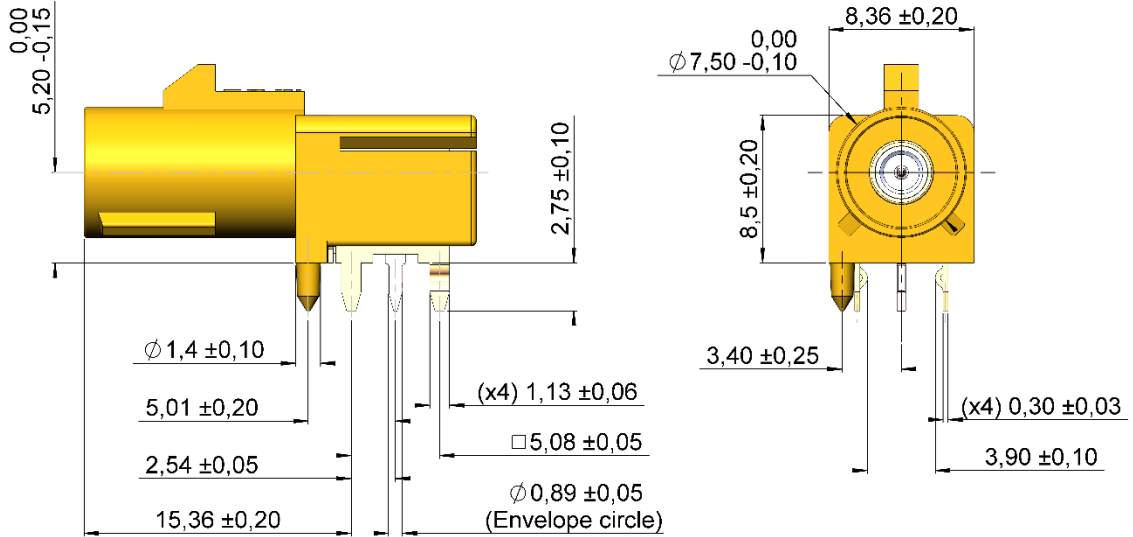
Fakra PCB – Right angle male
Process: Wave soldering



R197.166.K14

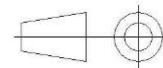
TECHNICAL DATA SHEET

Rev	Date	Edited	Approved	Validated	Modification
1	30/04/2019	T Mbuyi	Y.Gay		Creation
2	20/05/2019	L.Gering	Y.Gay		Add flammability information



Retention system for holding during soldering
(max insertion force to be defined)

All dimensions are in mm



Components	Materials	Plating
Body	Brass	Matt Tin over Nickel
Center contact	Brass	Gold over Nickel
Insulator	Polymer GF30 *	Natural color
Housing	Polymer GF30 *	See Codings

* material classification flammability UL94 : HB

Fakra PCB – Right angle male

Process: Wave soldering



R197.166.K14

TECHNICAL DATA SHEET

Interface According to **ISO 20860-1**

Application USCAR-17 Rev.4 (March 2013).
Please contact Raydiall team for detailed validation plan.

Electrical characteristics

Impedance	50 Ω
Frequency	0-3 GHz
VSWR	1.5 (Coax transmission line only)
Insertion loss	0.3 (Coax transmission line only)
Voltage rating	335 Veff Maxi
Dielectric withstanding Voltage	1000 Veff maxi
Insulation resistance	$\geq 1000 \text{ M}\Omega$

Mechanical characteristics

Center contact retention, axial force, mating end	$\geq 10 \text{ N mini}$
Center contact retention, axial force, opposite end	$\geq 10 \text{ N mini}$
Housing retention	$\geq 110 \text{ N mini}$
Mating cycles	≥ 25

Environmental

Operating temperature	-40 / +90°C
RoHS compliant	

Component weight 1.84g

Codings To obtain the complete part number, please fill in the blank “_” with the coding letter

Note : Consult Raydiall team for coding availability



A
Black
9005



B
Crème White
9001



C
Blue
5005



D
Bordeaux
4004



E
Green
6002



F
Brown
8011



G
Grey
7031



H
Violet
4003



I
Beige
1001



K
Curry
1027



L
Carmin
3002



M
Pastel Orange
2003



N
Pastel Green
6019

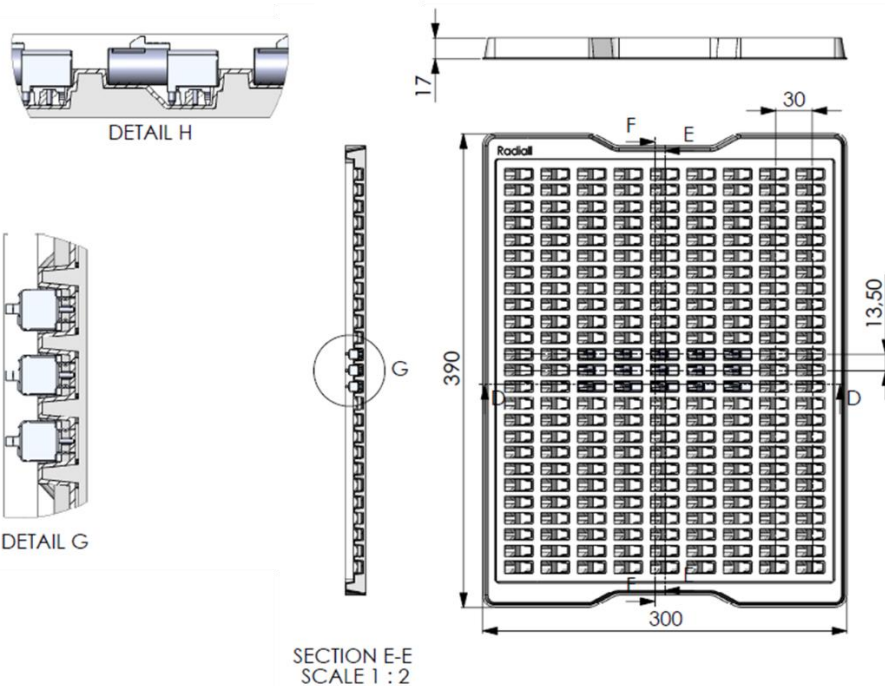


Z
Water blue
5021

Packaging

Primary packaging: plastic reel

- Dimensions : 390 x 300 x 17 mm
- Number of connectors per tray: 225
- Tray description:
 - 30mm between each line, 13.5 mm pitch.
 - Material: thermoplastic static dissipative



SECTION E-E
SCALE 1 : 2

Secondary packaging: Cardboard box 20 L

- Outside dimensions: 400 x 310 x 200 mm
- Number of trays per cardboard box: 15 plastic trays inside 1 cardboard box (14+1 empty on the top for the protection)
- Number of connectors per cardboard box: 3150
- Weight: 7.7 kg



(Picture is not contractual)

Third Packaging: Pallet

- PALLET Europe 1200 x 800mm
- Height: < 1500 mm
- 24 cardboxes max by pallet
- 75 600 receptacles by complete pallet

Labels

Label on the cardboard box including the reference
The labels do not include the shipping note number.

Storage

The product must be used as soon as it is removed from the cells.

Do not leave the product in the open air.

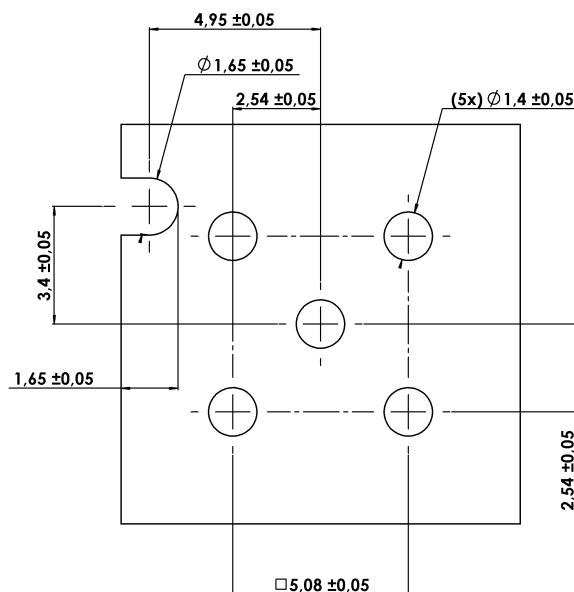
Trays should be stored indoors, in his original unopened packaging, in a controlled climate environment not exceeding -20°C / +40°C and 60% Max. relative humidity.

Trays should be protected from direct sunlight and should be used on a "first-in, first-out" basis.

It is recommended that connector be used within 1 year from the date of manufacture when stored according to the recommended storage condition.

PCB Cut out

- PCB Thickness: 1,6 mm.
- PCB recommended material: FR4 ($\epsilon_r = 4.6$).
- 5 metalized holes.
- This layout is a recommendation for solderability.
- Design and performances of the PCB will depend on customers choices and RAYDIALL cannot be considered as responsible in case of bad performances.
- A numerical simulation of the PCB is recommended to optimize the RF performance in high frequency.



Soldering process

- Wave soldering compliant
- Soldering bath temperature 270 / 280 °C
- PCB surface temperature -> 85-120 °C (exposure from 3 to 6 seconds)
- Soldering alloy Sn/Ag/Cu or Sn/Ag

X-ON Electronics

Largest Supplier of Electrical and Electronic Components

Click to view similar products for [RF Connectors / Coaxial Connectors](#) category:

Click to view products by [Raydiall](#) manufacturer:

Other Similar products are found below :

[8915-1511-000](#) [89674-0827](#) [6001-7071-019](#) [6002-7051-003](#) [6002-7551-202](#) [6059674-1](#) [619550-1](#) [630059-000](#) [M39030/3-01N](#) [M3933/25-36N](#) [6500-7071-046](#) [6769](#) [CX050L2AQ](#) [7002-1542-011](#) [7002-1572-002](#) [7004-1512-000](#) [7009-1511-004](#) [7010-1511-000](#) [7029-1511-060](#) [7101-1541-010](#) [7101-1571-002](#) [7105-1521-002](#) [7145-1521-002](#) [7203-1571-003](#) [7209-1511-011](#) [7210-1511-015](#) [7210-1511-019](#) [73137-5015](#) [73216-2241](#) [7325-1512-000](#) [73404-2300](#) [7405-1521-005](#) [7405-1521-802](#) [7406-1521-005](#) [8527](#) [8547](#) [FS11V](#) [8808-1511-001](#) [9049-9513-000](#) [9074-9513-000](#) [9101-9573-002](#) [910A205F](#) [9130-9573-002](#) [PL11SC-026](#) [PL375-33](#) [PL40-5](#) [PL71-9](#) [PL74C-221](#) [PL75MC-217](#) [PL803-7](#)