

# Features Evaluation Module Accessory

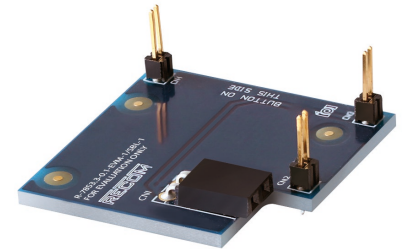
- Accessory for the R-78S3.3-0.1-EVM-1
- Mates with SensiBLE v1.0

**RECOM**  
Evaluation Module  
Accessory

R-78S3.3-0.1-EVM-1/SBL-1

## Description

The R-78S3.3-0.1-EVM-1/SBL-1 is a breakout board developed to be used with a SensiBLE v1.0 <sup>(1)</sup> module from SensiEDGE and the R-78S3.3-0.1-EVM-1 evaluation module to demonstrate IoT applications using the SensiBLE v1.0 module. Functions of the SensiBLE v1.0 module include 3-axis accelerometer, 3-axis magnetometer, 3-axis digital gyroscope, pressure, microphone, relative humidity, ambient light and temperature sensors. SensiBLE v1.0 contains an on-board coin battery which must be removed prior to connecting to the R-78S3.3-0.1-EVM-1/SBL-1. When supplied by R-78S3.3-0.1-EVM-1 with a AA battery, operation lifetime increases dramatically.



### Notes:

Note1: The SensiBLE v1.0 module from SensiEDGE is not provided by RECOM

### Quick Start Guide

- Insert the AA battery into the battery holder.
- Ensure that the coin battery is removed from the SensiBLE v1.0 module.
- Insert the SensiBLE v1.0 module onto the R-78S3.3-0.1-EVM-1/SBL-1, and plug into header J7 (refer to pictures for correct orientation).
- Turn on using the switch on the R-78S3.3-0.1-EVM-1 (Note: to reduce the power consumption, no indicator LED is fitted). Remember to switch off to conserve the battery.
- To connect with the SensiBLE v1.0 module, download and install the ST BlueMS App on your mobile phone and touch "START SCANNING".

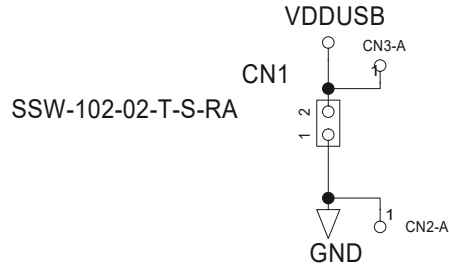


- This breakout board only connects to the power terminals of the SensiBLE v1.0 module.
- Communication is via Bluetooth (App available).
- CN2-pin 1 is connected to GND.
- CN3-pin 1 is connected to VDDUSB (with connection to R-78S3.3-0.1-EVM-1 it is 3.3V).
- All the other pins are not connected and serve only as mechanical connections.



[www.recom-power.com/eval-ref-boards](http://www.recom-power.com/eval-ref-boards)

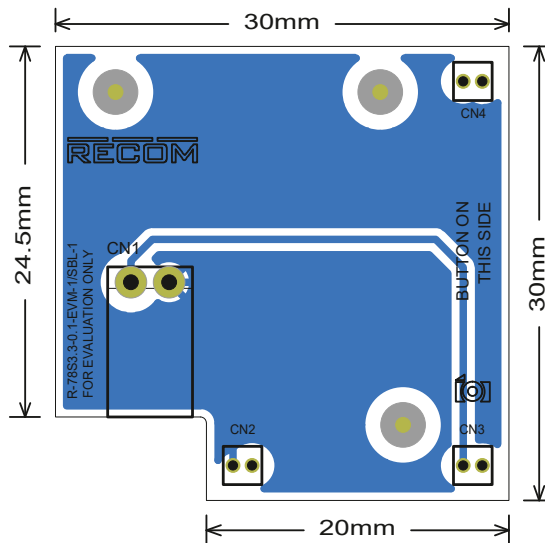
## Schematic



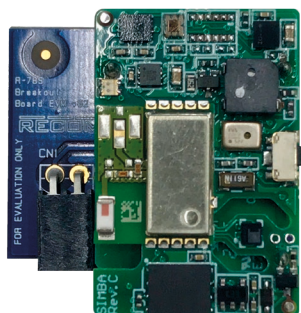
## DIMENSION AND PHYSICAL CHARACTERISTICS

Parameter	Type	Value
Dimension (LxWxH)		30.0 x 30.0 x 12.0mm
Weight		3.3g typ.

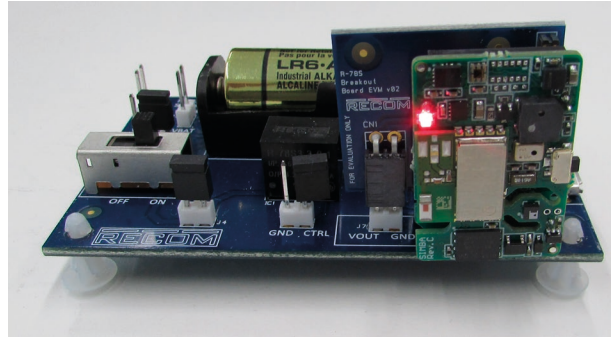
## Layout



## R-78S3.3-0.1-EVM-1/SBL-1 with the SensiBLE v1.0 module



Assembled R-78S3.3-0.1-EVM-1/SBL-1 on the R-78S3.3-0.1-EVM-1



## PACKAGING INFORMATION

Parameter	Type	Value
Packaging Dimension (LxWxH)	airbag	45.0 x 100.0 x 12.0mm
Packaging Quantity		1pcs

The product information and specifications may be subject to changes even without prior written notice. The product has been designed for various applications; its suitability lies in the responsibility of each customer. The products are not authorized for use in safety-critical applications without RECOM's explicit written consent. A safety-critical application is an application where a failure may reasonably be expected to endanger or cause loss of life, inflict bodily harm or damage property. The applicant shall indemnify and hold harmless RECOM, its affiliated companies and its representatives against any damage claims in connection with the unauthorized use of RECOM products in such safety-critical applications.

## X-ON Electronics

Largest Supplier of Electrical and Electronic Components

*Click to view similar products for [Bluetooth Development Tools - 802.15.1 category](#):*

*Click to view products by [Recom Power manufacturer](#):*

Other Similar products are found below :

[DA14580PRODTLKT](#) [1628](#) [MBH7BLZ02-EF-KIT](#) [CYBLE-014008-PROG](#) [FWM7BLZ20-EB-KIT](#) [ATSAMB11ZR-XPRO](#) [SKY66111-21EK1](#) [SECO-RSL10-TAG-GEVB](#) [3026](#) [MIKROE-2471](#) [MOD-NRF8001](#) [BLE-IOT-GEVB](#) [450-0184](#) [MIKROE-2399](#) [EKSHCNZXZ](#) [EVAL\\_PAN1026](#) [EVAL\\_PAN1720](#) [EVAL\\_PAN1740](#) [2267](#) [2479](#) [2487](#) [2633](#) [STEVAL-IDB005V1D](#) [STEVAL-IDB001V1](#) [MIKROE-2545](#) [SIPKITSLF001](#) [2995](#) [STEVAL-IDB007V1M](#) [2829](#) [DFR0267](#) [DFR0296](#) [DFR0492](#) [TEL0073](#) [BM-70-CDB](#) [WSM-BL241-ADA-008DK](#) [STEVAL-BTDP1](#) [ACD52832](#) [TEL0095](#) [ISP1507-AX-TB](#) [RN-4871-PICTAIL](#) [DA14695-00HQDEVKT-P](#) [DA14695-00HQDEVKT-U](#) [EVK-NINA-B112](#) [EBSHJNZXZ](#) [EKSHJNZXZ](#) [BMD-200-EVAL-S](#) [ACN BREAKOUT BOARD](#) [ACN SKETCH](#) [2269](#) [2746](#)