

Features

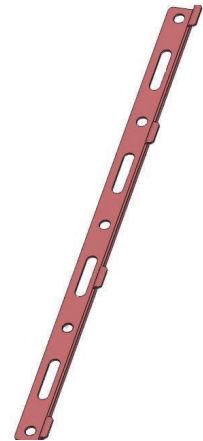
Mounting Bracket

- Spring steel to maintain traction
- Packed in manageable quantities
- Various mounting options for easy handling
- Replaces fastening from below
- Perfect attachment for RACM1200-V



RAC-MB1

Mounting Bracket for RECOM AC/DC converters



Description

RAC-MB1 supports the mounting of power modules such as the RACM1200-V from above, with three to four screws each on the left and right of the long sides of the housing. Access from below through the mounting base plate is therefore not required, which is helpful in dense installations where a heavily used mounting plate for fastening various components makes subsequent access difficult. Various screw placement options facilitate assembly while aiding in heat transfer through the socket. This accessory is made from stainless spring steel for durable traction and comes packaged in handy quantities.

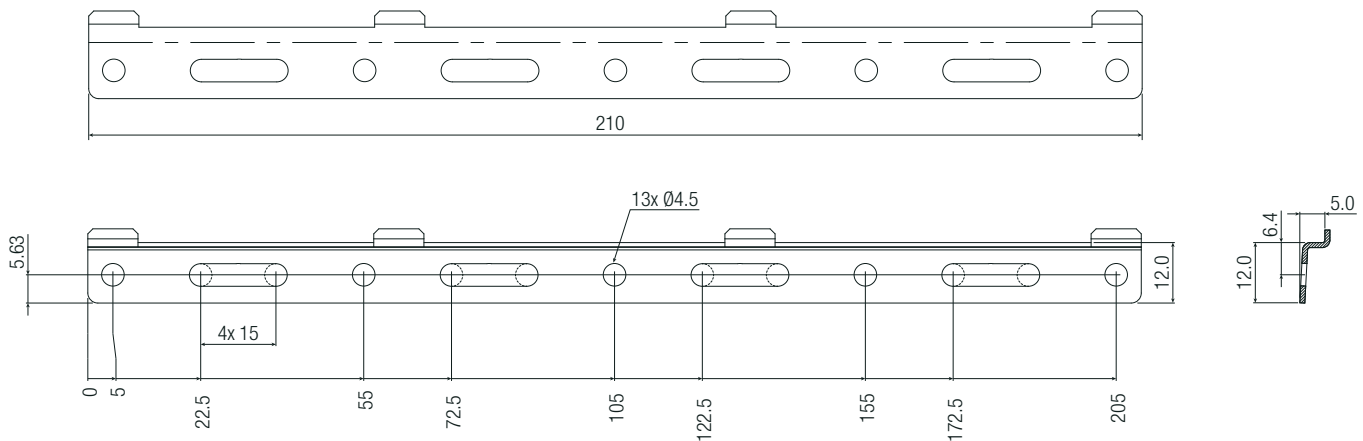
Compatible converters

Converter Series	Input Voltage Range [VAC]	nom. Output Voltages [VDC]	Converter Dimensions [mm]	Converter Link
RACM1200-V	85-264	24, 36, 48	228.0 x 96.2 x 40.0	RACM1200-V.pdf

DIMENSION AND PHYSICAL CHARACTERISTICS

Parameter	Type	Value
Dimension (LxWxH)		210.0 x 17.47 x 5.0mm
Weight		19g typ.

Dimension Drawing (mm)



PACKAGING INFORMATION

Parameter	Type	Value
Packaging Dimension (LxWxH)	cardboard box	225.0 x 85.0 x 20.0mm
Packaging Quantity		50pcs

The product information and specifications may be subject to changes even without prior written notice. The product has been designed for various applications; its suitability lies in the responsibility of each customer. The products are not authorized for use in safety-critical applications without RECOM's explicit written consent. A safety-critical application is an application where a failure may reasonably be expected to endanger or cause loss of life, inflict bodily harm or damage property. The applicant shall indemnify and hold harmless RECOM, its affiliated companies and its representatives against any damage claims in connection with the unauthorized use of RECOM products in such safety-critical applications.

X-ON Electronics

Largest Supplier of Electrical and Electronic Components

Click to view similar products for [Switching Power Supplies](#) category:

Click to view products by [RECOM POWER](#) manufacturer:

Other Similar products are found below :

[70841011](#) [73-551-0005](#) [73-551-0048](#) [EVS57-5R3/A](#) [AAD600S-4-OP](#) [MS924](#) [HWS50A-5/RA](#) [KD0204](#) [LDIN100150](#) [FP80](#) [FRV7000G](#)
[22929](#) [PS3E-F12F](#) [CQM1IA121](#) [VI-PU22-EXX](#) [LDIN5075](#) [432703037161](#) [09-160CFG](#) [LPM000-BBAR-08](#) [LPM000-BBAR-07](#) [08-30466-](#)
[1055G](#) [DMB-EWG](#) [CQM1IPS01](#) [SP-300-5](#) [CQM1-IPS02](#) [VI-MUL-ES](#) [22829](#) [08-30466-0028G](#) [09-250CFG](#) [CA400](#) [H47251](#) [96PSR-](#)
[A460WOTH-2](#) [VP-E2935648E](#) [G08-L](#) [G06-Q01](#) [GHA300F-12-SNF](#) [MTA040009A](#) [FSA150024A](#) [VI-RUR22-EWXX](#) [VI-PU03-EYW](#)
[PM1-03B-48-2](#) [VI-LUF-EW](#) [VI-QCWB3-CSV](#) [HLS30ZE-NT8](#) [UT1404-7](#) [ERP-350-12](#) [S8FSG01512C](#) [S8FSG03012C](#) [VI-PU22-EYY](#)
[XPFM201A+](#) [S8FS-G15015C](#)