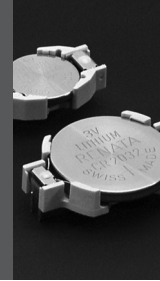


# Battery Holders

## Through-hole mounting



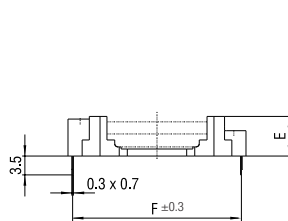
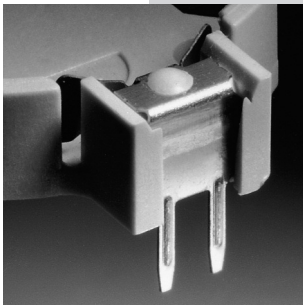
### Horizontal mounting

#### Features

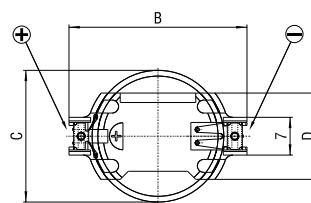
- Easy and fast replacement of the battery
- Designed for automatic pick&place mounting
- Safe retention of coin cell
- Automated battery mounting possible
- Clear separation of connections
- Protection against short-circuits
- Protection against inverse polarity (polarized)
- Protection against leak currents
- Robust design
- Suitable for wave-soldering

#### Specifications

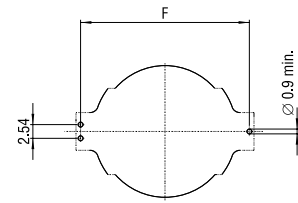
- Holder material: heat-resistant, glass fibre filled LCP
- Flammability rating UL 94 V-0
- Battery contacts: spring stainless steel AISI 301, nickel-plated throughout. Solder area tin-plated throughout, min. thickness 5  $\mu\text{m}$ .
- Contact resistance between contacts and the cell is less than 100  $\text{m}\Omega$  (measured through AC 1kHz; depending on the case material of the cell).
- UL recognition, file E218732
- Operating temperature range:  $-40/+100^{\circ}\text{C}$



side view



top view



layout top view

### Dimensions

Model	For use with Renata cell	Dimensions (mm)					Weight (g)	Part.No.*
		B	C	D	E	F		
HU357-LF	357 (SR44W)	19.9	11.6	12.0	7.4	18.65	0.84	701133
HU1225-LF	CR1225	20.3	12.5	12.7	4.5	19.1	0.70	701105
HU1632-LF	CR1632	24.3	16.0	14.5	5.2	23.0	0.80	701131
HU2032-LF	CR2032	28.5	20.0	16.1	5.2	27.2	0.95	701106
HU2430-LF	CR2430	33.0	24.5	16.1	4.7	31.7	1.05	701107
HU2450N-LF	CR2450N <sup>1)</sup>	33.0	24.5	16.1	7.3	31.75	1.45	701108
HU2477N-LF	CR2477N	33.0	24.5	16.1	10.1	31.8	1.65	701109

\*Packaging: Industrial Bulk (IB-Trays)

1) Not suitable for CR2450HT

## X-ON Electronics

Largest Supplier of Electrical and Electronic Components

*Click to view similar products for [Coin Cell Battery Holders](#) category:*

*Click to view products by [Renata](#) manufacturer:*

Other Similar products are found below :

[PDSN-11-D](#) [1058](#) [799-2007](#) [BH44AAB](#) [BH48DL](#) [BH8000](#) [BS-6-1](#) [79573231](#) [101](#) [3035](#) [1025](#) [1026](#) [1027](#) [103](#) [1059](#) [1060](#) [1063](#) [1065](#)  
[1068](#) [1093](#) [D3](#) [46400000](#) [BC-0403](#) [BH-121-1B](#) [BH-1/2AA-2A](#) [BH-131A](#) [BH-3101A](#) [BH-3103B](#) [BH-311-1A](#) [BH-311-1D](#) [BH-321-1A](#)  
[BH-321-1B](#) [BH-321-1D](#) [BH-331-3D](#) [BH-333A](#) [BH-341-1P](#) [BH-342-1A](#) [BH-351A](#) [BH-362B](#) [BH-383A](#) [BH-421A](#) [BH-422A](#) [BH-425A](#)  
[BH-431-1B](#) [BH-463A](#) [BH-511A](#) [BHC-18650-1P](#) [46300000](#) [46600000](#) [799-2001](#)