

### GENERAL DESCRIPTION

This document describes the specifications for the IDTF0552 1710MHz to 2050MHz dual path Sampling Intermediate Frequency (SIF) Receiver ideal for Multi-mode, Multi-carrier BaseStation Receivers. Refer to the Part # Matrix below describing the frequency coverage of the complete series. This series of devices covers all UTRA bands up to 2.7 GHz and offers significantly better Noise and Distortion performance than currently available solutions. IF frequencies up to 450 MHz are supported.

The IDTF0552 SIF provides 29dB gain and offers 47dB gain adjustment in 1dB steps designed to operate with a single 5V supply. Nominally, the device offers +45 dBm Output IP3 using 450mA of  $I_{CC}$ . Alternately one can configure the device in low current (LC) mode to reduce power consumption to < 1.9 Watts.

This device is packaged in a 10x10 68-pin Thin QFN with 50 ohm single-ended RF input and 200 ohm differential IF output impedances for ease of integration into the receiver lineup. The EvKit is configured to match the 200 ohm differential IF output to 100 ohms differential for a broad range of IF center frequencies per the application drawings on page 51.

### COMPETITIVE ADVANTAGE

IDT's Zero-Distortion™ mixer in combination with interstage filtering and IDT's proprietary FlatNoise™ DVGA improves system SNR to the point where the external SAW filter can be eliminated. Both  $IP3_O$  & NF are kept virtually flat while gain is backed off, enhancing SNR significantly under high level interferer conditions, and greatly benefiting 2G/3G/4G Multi-Carrier IF sampling receivers. In addition, total power consumption is reduced by ~35% compared to conventional solutions.

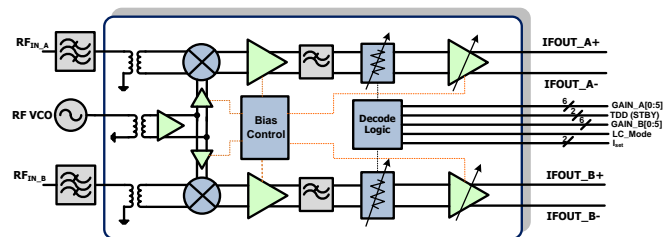
- ✓ No external SAW is needed
- ✓ Reduced Power Consumption by 35%
- ✓ NF and OIP3 virtually flat for first 17 dB gain reduction

The fast-settling, parallel mode gain step of 1.0 dB coupled with the excellent differential non-linearity allow for SNR to be maximized further by targeting the minimum necessary gain in small, accurate increments. The matched output does not require a terminating resistor, thus the gain and distortion performance are preserved when driving Bandpass Anti-Alias filters.

### FEATURES

- Dual Channel for Diversity / MIMO Systems
- Combines FlatNoise™ and Zero-Distortion™ technology
- 29 dB Total Power Gain
- 47 dB gain control range
- 1 dB Gain Steps
- Ultra linear +45 dBm  $IP3_O$
- Low NF: 9.6 dB @  $G_{MAX}$
- 50  $\Omega$  input impedance
- Matched to 100  $\Omega$  differential output impedance
- Ultra high +19.8 dBm P1dB<sub>O</sub>
- Independent channel standby mode
- Constant LO impedance in STBY mode
- 6 bit parallel control
- 60 MHz to 450 MHz IF frequency range
- Excellent 2x2, 3x3, IM2, 2<sup>nd</sup> Harmonic Rejection
- $I_{CC}$  = 450mA STD Mode, 375mA LC Mode
- 10x10 68-pin TQFN package

### DEVICE BLOCK DIAGRAM



### PART# MATRIX

Part#	RF freq range	UTRA bands	IF freq range	Typ. Gain	Injection
F0502	698 - 915	5,6,8,12,13,14,17,18,19,20	60 - 300	29	Low & High Side
F0552	1710 - 2050	1,2,3,4,9,10,23,25,33,34,35,36,37,39	60 - 450	29	Low & High Side
F0562	2300 - 2700	7,38,40,41	60 - 450	29	Low & High Side



**TABLE OF CONTENTS**

Absolute Maximum Ratings ..... 4

Truth Table – Channel A & B..... 5

IDTF0552 Recommended Operating Conditions..... 6

IDTF0552 Specification ..... 7

Typical Operating Conditions (STD mode, 184MHz IF) ..... 10

    TOCs [Max Gain, STD Mode, IF = 184M] Gain (-1-)..... 11

    TOCs [Max Gain, STD Mode, IF = 184M] OIP3 (-2-) ..... 12

    TOCs [Max Gain, STD Mode, IF = 184M] OIP2 (-3-) ..... 13

    TOCs [Max Gain, STD Mode, IF = 184M] 2X2 (-4-)..... 14

    TOCs [Max Gain, STD Mode, IF = 184M] Leakage (-5-) ..... 15

    TOCs [Max Gain, STD Mode, IF = 184M] DC Current (-6-) ..... 16

    TOCs Swept Gain Setting [STD Mode, IF =184M, LS Injection] Gain, OIP3, IIP3 (-7-) ..... 17

    TOCs Swept Gain Setting [STD Mode, IF =184M, LS Injection] OIP2, IIP2, 2X2 (-8-)..... 18

    TOCs Swept Gain Setting [STD Mode, IF =184M, LS Injection] 3X3, Leakage (-9-)..... 19

    TOCs Noise Figure [STD Mode, ChA only] (-10-)..... 20

    TOCs Spurs [STD Mode, IF Match 184M, LO = 1.563 GHz, Gain = 0 dB, T<sub>A</sub> = 25C] (-11-) ..... 21

    Gain Accuracy, Board Losses (-12-) ..... 22

    TOCs P<sub>1dB</sub> [STD Mode] (-13-) ..... 23

Typical Operating Conditions (STD mode, 138MHz IF) ..... 24

    TOCs [STD Mode, IF = 138M, LS Injection] Gain, OIP3, OIP2 (-14-)..... 25

    TOCs [STD Mode, IF = 138M, LS Injection] 2X2, 3X3, Leakage (-15-) ..... 26

    TOCs [STD Mode, IF = 138M, LS Injection] OIP3, OIP3, 2X2 (-16-)..... 27

    TOCs [STD Mode, IF = 138M, LS Injection] 3X3, Leakage (-17-) ..... 28

Typical Operating Conditions (STD mode, 276MHz IF) ..... 29

    TOCs [Max Gain, IF = 276M, STD Mode] Gain, OIP3, OIP2 (-18-) ..... 30

    TOCs [Max Gain, IF = 276M, STD Mode] 2X2, 3X3, Leakage (-19-) ..... 31

    TOCs Swept Gain Setting [STD Mode, IF =276M, LS Injection] Gain, OIP3, IIP3 (-20-)..... 32

    TOCs Swept Gain Setting [STD Mode, IF =276M, LS Injection] OIP2, IIP2, 2X2 (-21-)..... 33

    TOCs Swept Gain Setting [STD Mode, IF =276M, LS Injection] 3X3, Leakage (-22-) ..... 34

Typical Operating Conditions (LC mode, 184MHz)..... 35

    TOCs Swept Gain Setting [LC Mode, IF =184M, LS Injection] Gain, OIP3, IIP3 (-23-) ..... 36

    TOCs Swept Gain Setting [LC Mode, IF =184M, LS Injection] OIP2, IIP2, 2X2 (-24-) ..... 37

    TOCs Swept Gain Setting [LC Mode, IF =184M, LS Injection] 3X3, Leakage (-25-) ..... 38

    TOCs Swept Gain Setting [LC Mode, IF =184M, LS Injection] Cha Iso (-26-)..... 39

    TOCs Return Loss [STD Mode] (-27-) ..... 40



**Sampling IF Receiver**

**1710MHz to 2050MHz**

TOCs Histograms [N= 1090, T <sub>CASE</sub> = 25C] (-28-)	41
Package Drawing (10x10 68-pin Thin QFN)	42
F0552 Pinout	43
F0552 Pin Description Table	44
F0552 Digital Pin Voltage & Resistance Values	46
EVKIT & Typical Application Schematic	48
EVkit Picture	50
F0552 BOM 1 & 2	51
IF Bias and Output Matching Circuit & BOM for various IFs	52
IF Network BOM for different frequencies	52
Top Markings	53



**ABSOLUTE MAXIMUM RATINGS**

VCC to GND	-0.3V to +5.5V
A[5:0], B[5:0], TDD_A, TDD_B (STBY), LCMODE	-0.3V to (VCC + 0.25V)
MX_IFA+, MX_IFA-, MX_IFB+, MX_IFB-	-0.3V to (VCC + 0.25V)
IFOUT_A+, IFOUT_A-, IFOUT_B+, IFOUT_B-	1V to (VCC + 0.3V)
LO1_ADJ	+1V to +3V
LO2_ADJ	+2.1V to +4V
MX_IF_BiasA, MX_IF_BiasB	-0.3V to +0.3V
LO_IN, RFIN_A, RFIN_B	-0.3V to +0.3V
RF Input Power (RFIN_A, RFIN_B)	+20dBm
ISET_A, ISET_B to GND	-0.3V to +2.2V
Continuous Power Dissipation	2.5W
$\theta_{JA}$ (Junction – Ambient)	+25°C/W
$\theta_{JC}$ (Junction – Case) The Case is defined as the exposed paddle	+3°C/W
Operating Temperature Range (Case Temperature)	$T_C = -40^\circ\text{C}$ to $+105^\circ\text{C}$
Maximum Junction Temperature	150°C
Storage Temperature Range	-65°C to +150°C
Lead Temperature (soldering, 10s)	+260°C

*Stresses above those listed above may cause permanent damage to the device. Functional operation of the device at these or any other conditions above those indicated in the operational section of this specification is not implied. Exposure to absolute maximum rating conditions for extended periods may affect device reliability.*



**TRUTH TABLE – CHANNEL A & B**

Gain Set Target	Gain CodeWord	Code Name	Gain Set Target	Gain CodeWord	Code Name	Gain Set Target	Gain CodeWord	Code Name
27	000000	G <sub>27</sub>	5	010110	G <sub>5</sub>	-17	101100	G <sub>-17</sub>
26	000001	G <sub>26</sub>	4	010111	G <sub>4</sub>	-18	101101	G <sub>-18</sub>
25	000010	G <sub>25</sub>	3	011000	G <sub>3</sub>	-19	101110	G <sub>-19</sub>
24	000011	G <sub>24</sub>	2	011001	G <sub>2</sub>	-20	101111	G <sub>-20</sub>
23	000100	G <sub>23</sub>	1	011010	G <sub>1</sub>	-20	110000	G <sub>-20</sub>
22	000101	G <sub>22</sub>	0	011011	G <sub>0</sub>	-20	110001	G <sub>-20</sub>
21	000110	G <sub>21</sub>	-1	011100	G <sub>-1</sub>	-20	110010	G <sub>-20</sub>
20	000111	G <sub>20</sub>	-2	011101	G <sub>-2</sub>	-20	110011	G <sub>-20</sub>
19	001000	G <sub>19</sub>	-3	011110	G <sub>-3</sub>	-20	110100	G <sub>-20</sub>
18	001001	G <sub>18</sub>	-4	011111	G <sub>-4</sub>	-20	110101	G <sub>-20</sub>
17	001010	G <sub>17</sub>	-5	100000	G <sub>-5</sub>	-20	110110	G <sub>-20</sub>
16	001011	G <sub>16</sub>	-6	100001	G <sub>-6</sub>	-20	110111	G <sub>-20</sub>
15	001100	G <sub>15</sub>	-7	100010	G <sub>-7</sub>	-20	111000	G <sub>-20</sub>
14	001101	G <sub>14</sub>	-8	100011	G <sub>-8</sub>	-20	111001	G <sub>-20</sub>
13	001110	G <sub>13</sub>	-9	100100	G <sub>-9</sub>	-20	111010	G <sub>-20</sub>
12	001111	G <sub>12</sub>	-10	100101	G <sub>-10</sub>	-20	111011	G <sub>-20</sub>
11	010000	G <sub>11</sub>	-11	100110	G <sub>-11</sub>	-20	111100	G <sub>-20</sub>
10	010001	G <sub>10</sub>	-12	100111	G <sub>-12</sub>	-20	111101	G <sub>-20</sub>
9	010010	G <sub>9</sub>	-13	101000	G <sub>-13</sub>	-20	111110	G <sub>-20</sub>
8	010011	G <sub>8</sub>	-14	101001	G <sub>-14</sub>	-20	111111	G <sub>-20</sub>
7	010100	G <sub>7</sub>	-15	101010	G <sub>-15</sub>			
6	010101	G <sub>6</sub>	-16	101011	G <sub>-16</sub>			



**IDTF0552 RECOMMENDED OPERATING CONDITIONS**

Parameter	Comment	Symbol	min	typ	max	Units
Supply Voltage(s)	All V <sub>CC</sub> pins	V <sub>CC</sub>	4.75		5.25	V
LO Power		P <sub>LO</sub>	-3		+3	dBm
Operating Temperature Range	Case Temperature	T <sub>CASE</sub>	-40		+105	degC
RF Freq Range	For Cellular Applications	F <sub>RF</sub>	1710		2050	MHz
LO Freq Range		F <sub>LOLS</sub>	1345		2330	
IF Range		F <sub>IF</sub>	60		450	

**IDTF0552 SPECIFICATION**

F0552 Typical Application Circuit, when operated as a Sampling IF Receiver,  $V_{CC} = +5.00V$ ,  $T_C = +25^\circ C$ ,  $F_{RF} = 1880$  MHz,  $F_{IF} = 184MHz$ ,  $F_{LO} = 1696MHz$ ,  $P_{LO} = 0$  dBm, Output power = +3dBm per tone unless otherwise noted, TDD\_A, TDD\_B = LOW. EVkit IF transformer losses are de-embedded unless otherwise noted.

Parameter	Comment	Symbol	min	typ	max	units
Logic Input High	For all control pins	$V_{IH}$	<b>1.07</b>			V
Logic Input Low	For all control pins	$V_{IL}$			<b>0.68</b>	V
Logic Current	For all control pins	$I_{IH}, I_{IL}$	<b>-150</b>		<b>10</b>	$\mu A$
Supply Current	Total $V_{CC}$ , STD Mode	$I_{STD}$		<b>450</b>	<b>510</b>	mA
Supply Current	Total $V_{CC}$ , LC Mode	$I_{LC}$		<b>375</b>	<b>420</b>	mA
Supply Current	<ul style="list-style-type: none"> <li>▪ Standby Mode</li> <li>▪ STBY = <math>V_{IH}</math></li> <li>▪ Total Both Channels</li> </ul>	$I_{STBY}$		<b>21</b>	<b>28</b>	mA
Gain STD Mode	Conversion Power Gain Minimum attenuation	$G_{STDMAX}$	<b>27</b>	<b>29<sup>1</sup></b>	<b>31</b>	dB
Gain LC Mode	Conversion Power Gain Minimum attenuation	$G_{LC}$	<b>26.5</b>	<b>28.5</b>	<b>30.5</b>	dB
Gain control range		$G_{RANGE}$		<b>47<sup>2</sup></b>		dB
Gain STD mode min gain setting	Maximum attenuation	$G_{STDMIN}$		<b>-18</b>		dB
Step size		$G_{STEP}$		<b>1</b>		dB
Differential Gain Error	Between any two adjacent 1dB steps	DNL		<b>0.1</b>	<b>0.2</b>	dB
Integral Gain Error	Error vs. line ( $G_{27}$ Ref)	INL		<b>0.2</b>	<b>0.8</b>	dB
Phase Error	Maximum phase change between $G_{MAX}$ and any state down to $G_{-14}$	IPE		<b>2.5</b>	<b>4</b>	degree
NF STD Mode	Noise Figure (@ +25C)	$NF_{STD}$		<b>9.6</b>	<b>10.6</b>	dB
NF STD Mode 10dB reduced gain		$NF_{STD\_G-10}$		<b>9.6</b>	<b>10.6</b>	dB
NF LC Mode	Noise Figure (@ +25C)	$NF_{LC}$		<b>9.3</b>	<b>10.3</b>	dB
NF LC Mode 10dB reduced gain		$NF_{LC\_G-10}$		<b>9.5</b>	<b>10.5</b>	dB
NF w/Blocker	<ul style="list-style-type: none"> <li>▪ +100 MHz offset blocker</li> <li>▪ <math>P_{IN} = +4dBm</math></li> <li>▪ 28dB gain reduced</li> </ul>	$NF_{BLK}$		<b>19.7</b>	<b>21</b>	dB

**IDTF0552 Specification (Continued)**

F0552 Typical Application Circuit, when operated as a Sampling IF Receiver,  $V_{CC} = +5.00V$ ,  $T_C = +25^\circ C$ ,  $F_{RF} = 1880$  MHz,  $F_{IF} = 184MHz$ ,  $F_{LO} = 1696MHz$ ,  $P_{LO} = 0$  dBm, Output power = +3dBm per tone unless otherwise noted, TDD\_A, TDD\_B = LOW. EVkit IF transformer losses are de-embedded unless otherwise noted.

Parameter	Comment	Symbol	min	typ	max	units
Turn-on time	<ul style="list-style-type: none"> <li>Gate STBY from <math>V_{IH}</math> to <math>V_{IL}</math></li> <li>Time for IF Signal to settle to within 0.1 dB of final value</li> </ul>	$T_{SETTL}$		0.17	0.20	$\mu$ sec
Attenuator adjustment settling time	<ul style="list-style-type: none"> <li>Any two Adjacent 1dB Steps</li> <li>+/-0.10 dB Pout settling</li> </ul>	$T_{1dB}$		17.5	25	nsec
Output IP3 Max Gain, STD <sub>MODE</sub>	<ul style="list-style-type: none"> <li>Set <math>G_{MAX}</math>,</li> <li>800 KHz Tone Separation</li> </ul>	IP3 <sub>O1</sub>	<b>40</b>	<b>45</b>		dBm
Output IP3 10dB reduced gain, STD <sub>MODE</sub>	<ul style="list-style-type: none"> <li>From <math>G_{MAX}</math> to <math>G_{MAX-10}</math>,</li> <li>Pout = +1dBm per tone</li> <li>800 KHz Tone Separation</li> </ul>	IP3 <sub>O2</sub>	40	45		dBm
Output IP3 10dB reduced gain, STD <sub>MODE</sub>	<ul style="list-style-type: none"> <li>From <math>G_{MAX}</math> to <math>G_{MAX-10}</math>,</li> <li>Pout = +1dBm per tone</li> <li>800 KHz Tone Separation</li> <li>-40C <math>\leq</math> Tcase <math>\leq</math> +105C</li> <li>IF = 138MHz, LO = 1742MHz</li> <li>IF = 184MHz, LO = 1696MHz</li> <li>IF = 276MHz<sup>3</sup>, LO = 1604MHz</li> </ul>	IP3 <sub>O3</sub>		44		dBm
Output IP3 Max Gain, LC <sub>MODE</sub>	<ul style="list-style-type: none"> <li>Set <math>G_{MAX}</math>,</li> <li>800 KHz Tone Separation</li> </ul>	IP3 <sub>O4</sub>	40	45		dBm
Input IP3 22dB reduced gain, STD <sub>MODE</sub>	<ul style="list-style-type: none"> <li>Set <math>G_{MAX-22dB}</math>,</li> <li>Pin = - 5dBm per tone</li> <li>800 KHz Tone Separation</li> </ul>	IP3 <sub>ISTD</sub>	28	31.5		dBm
Input IP3 22dB reduced gain, LC <sub>MODE</sub>	<ul style="list-style-type: none"> <li>Set <math>G_{MAX-22dB}</math>,</li> <li>Pin = -10dBm per tone</li> <li>800 KHz Tone Separation</li> </ul>	IP3 <sub>ILC</sub>		24.5		dBm
1 dB Compression Max Gain, STD <sub>MODE</sub>	Output referred	P1dB <sub>O1</sub>	<b>17</b>	19.8		dBm
1 dB Compression 30dB reduced gain, STD <sub>MODE</sub>	<ul style="list-style-type: none"> <li>Input referred</li> <li>Set <math>G_{MAX-30dB}</math></li> </ul>	P1dB <sub>I1</sub>	8.2	9.2		dBm
1 dB Compression Max Gain, LC <sub>MODE</sub>	Output referred	P1dB <sub>O2</sub>	<b>17</b>	19.8		dBm
1 dB Compression 30dB reduced gain, LC <sub>MODE</sub>	<ul style="list-style-type: none"> <li>Input referred</li> <li>Set <math>G_{MAX-30dB}</math></li> </ul>	P1dB <sub>I2</sub>	6.5	7		dBm
2RF – 2LO rejection Max Gain, STD <sub>MODE</sub>	<ul style="list-style-type: none"> <li>Frequency = <math>F_{RF} - \frac{1}{2} F_{IF}</math></li> <li><math>P_{RF} = -27dBm</math></li> </ul>	2x2 <sub>1</sub>		-75	-65	dBc
2RF – 2LO rejection 22dB reduced gain, STD <sub>MODE</sub>	<ul style="list-style-type: none"> <li>Frequency = <math>F_{RF} - \frac{1}{2} F_{IF}</math></li> <li><math>P_{RF} = -5dBm</math></li> </ul>	2x2 <sub>2</sub>		-72	-62	dBc



## Sampling IF Receiver

1710MHz to 2050MHz

### IDTF0552 Specification (Continued)

F0552 Typical Application Circuit, when operated as a Sampling IF Receiver,  $V_{CC} = +5.00V$ ,  $T_C = +25^\circ C$ ,  $F_{RF} = 1880$  MHz,  $F_{IF} = 184MHz$ ,  $F_{LO} = 1696MHz$ ,  $P_{LO} = 0$  dBm, Output power = +3dBm per tone unless otherwise noted, TDD\_A, TDD\_B = LOW. EVkit IF transformer losses are de-embedded unless otherwise noted.

Parameter	Comment	Symbol	min	typ	max	units
2RF – 2LO rejection Max Gain, LC <sub>MODE</sub>	<ul style="list-style-type: none"> <li>Frequency = <math>F_{RF} - \frac{1}{2} F_{IF}</math></li> <li><math>P_{RF} = -27dBm</math></li> </ul>	2x2 <sub>3</sub>		-74	-60	dBc
2RF – 2LO rejection 22dB reduced gain, LC <sub>MODE</sub>	<ul style="list-style-type: none"> <li>Frequency = <math>F_{RF} - \frac{1}{2} F_{IF}</math></li> <li><math>P_{RF} = -5dBm</math></li> </ul>	2x2 <sub>4</sub>		-71	-60	dBc
2 <sup>nd</sup> Harmonic Max Gain, STD <sub>MODE</sub>	$P_{RF} = -27$ dBm	HD2 <sub>1</sub>		-77	-70	dBc
2 <sup>nd</sup> Harmonic Max Gain, LC <sub>MODE</sub>	$P_{RF} = -27$ dBm	HD2 <sub>3</sub>		-76	-70	dBc
3rd Harmonic – Max Gain, STD <sub>MODE</sub>	$P_{RF} = -27$ dBm	HD3 <sub>1</sub>		-100	-80	dBc
3rd Harmonic Max Gain, LC <sub>MODE</sub>	$P_{RF} = -27$ dBm	HD3 <sub>3</sub>		-100	-82	dBc
Channel Isolation Max Gain, STD <sub>MODE</sub>	IF_B Pout vs. IF_A w/ RF_A input	ISO <sub>C_STD</sub>	40	43		dB
Channel Isolation Max Gain, LC <sub>MODE</sub>	IF_B Pout vs. IF_A w/ RF_A input	ISO <sub>C_LC</sub>	40	43		dB
LO to IF leakage Max Gain, STD <sub>MODE</sub>		ISO <sub>LI-1</sub>		-53	-45	dBm
LO to IF leakage Max Gain, LC <sub>MODE</sub>		ISO <sub>LI-3</sub>		-54	-45	dBm
RF to IF leakage Max Gain, STD <sub>MODE</sub>	$P_{RF} = -27$ dBm	ISO <sub>RI-1</sub>		-84	-75	dBc
RF to IF leakage Max Gain, LC <sub>MODE</sub>	$P_{RF} = -27$ dBm	ISO <sub>RI-2</sub>		-85	-75	dBc
LO to RF leakage, STD <sub>MODE</sub>		ISO <sub>LR</sub>		-37		dBm
RFIN Impedance	Single Ended	Z <sub>RFIN</sub>		50		Ω
LO Port Impedance	Single Ended	Z <sub>LO</sub>		50		
IF Output Impedance	Differential	Z <sub>IF</sub>		200		

### Specification Notes:

- 1 – Items in min/max columns in **bold italics** are Guaranteed by Test using BOM1 components supporting 4:1 output impedance transformation to 50 ohms
- 2 – All other Items in min/max columns are Guaranteed by Design Characterization using BOM2 components supporting 2:1 output impedance transformation to 100 ohms
- 3 – Matching network changed for 276MHz IF per BOM table values

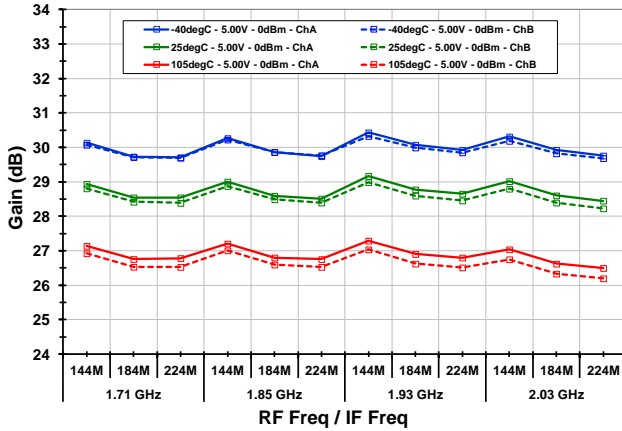
**TYPICAL OPERATING CONDITIONS (STD MODE, 184MHz IF)**

Unless otherwise noted, the following conditions apply to the 184MHz Typ Ops Graphs:

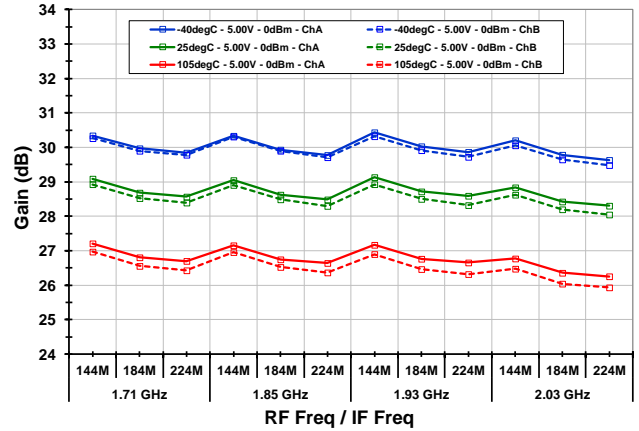
- BOM2 Applications circuit with 184 MHz IF Center +/- 40 MHz bandwidth network to provide matching to 100 ohm differential load provided by 2:1 transformer (see page 51)
- P<sub>out</sub> ~ +1 dBm
- P<sub>IN</sub> from -27 to -6 dBm (Gain Setting Adjusted to yield P<sub>out</sub> ~ +1 dBm without exceeding -6 dBm P<sub>IN</sub>)
- Tone Spacing = 800 KHz
- Device configured in Standard Mode with Low Side Injection
- T<sub>CASE</sub> = 25C, V<sub>CC</sub> = 5.00 V, LO Power = 0 dBm
- RF Frequency: 1.88 GHz
- IF Frequency: 184 MHz
- Gain Setting Sweep points: 27 dB (G<sub>MAX</sub>)
- Transformer Losses are de-embedded
- Input RF trace Losses are not de-embedded
- Listed Temperatures are Case Temperature (T<sub>C</sub> = Case Temperature)
- Where noted, T<sub>A</sub> or T<sub>AMB</sub> = Ambient Temperature

**TOCs [MAX GAIN, STD MODE, IF = 184M] GAIN (-1-)**

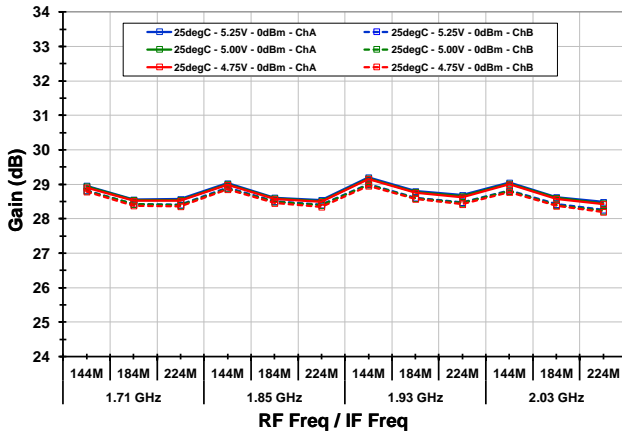
**Gain vs. TCASE [low side inj.]**



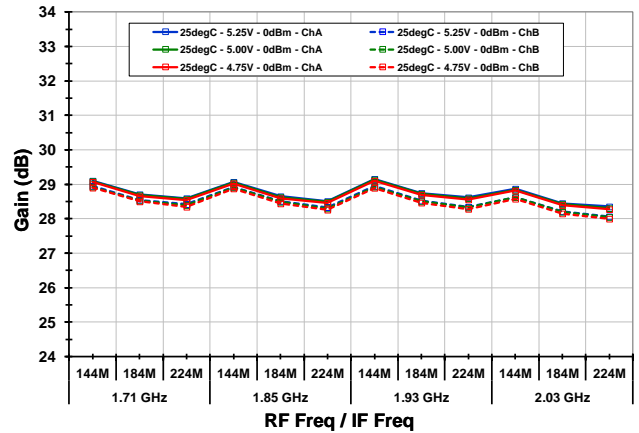
**Gain vs. TCASE [high side inj.]**



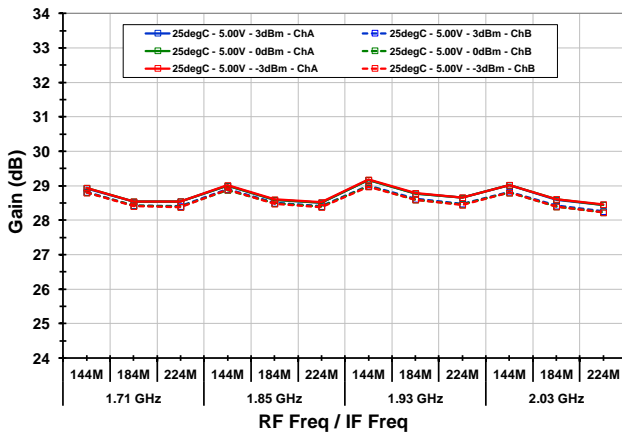
**Gain vs. V<sub>CC</sub> [low side inj.]**



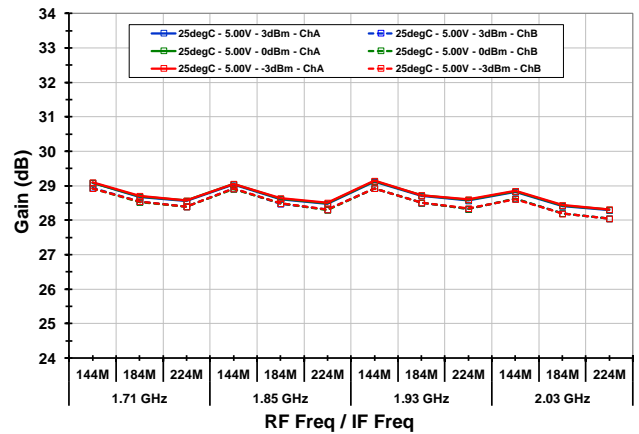
**Gain vs. V<sub>CC</sub> [high side inj.]**



**Gain vs. LO level [low side inj.]**



**Gain vs. LO level [high side inj.]**

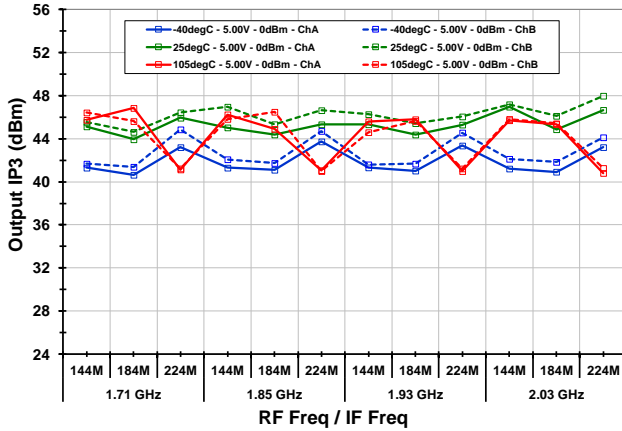


## Sampling IF Receiver

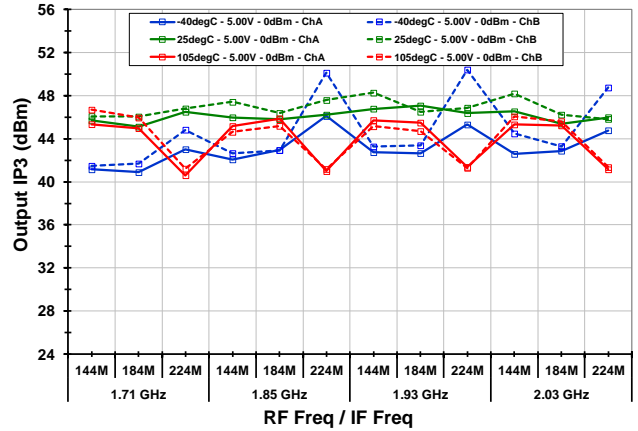
1710MHz to 2050MHz

### TOCs [MAX GAIN, STD MODE, IF = 184M] OIP3 (-2-)

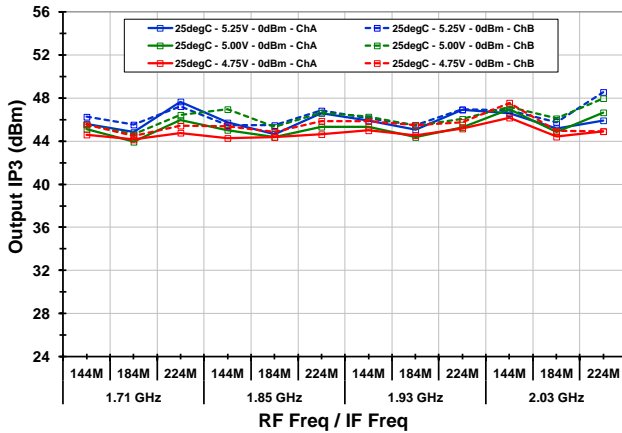
#### Output IP3 vs. T<sub>CASE</sub> [low side inj.]



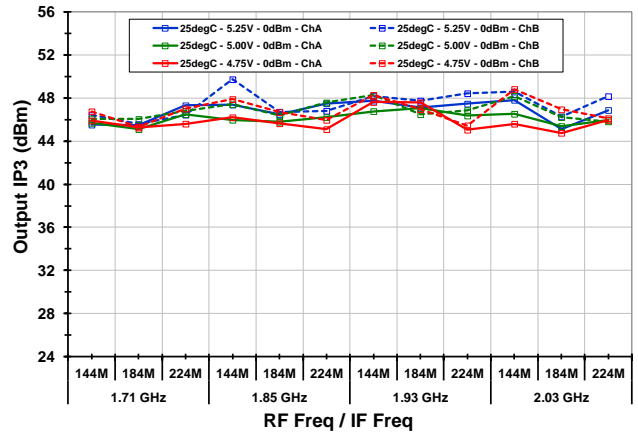
#### Output IP3 vs. T<sub>CASE</sub> [high side inj.]



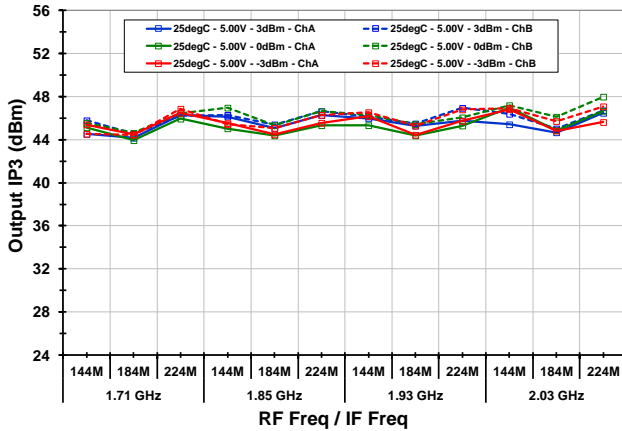
#### Output IP3 vs. V<sub>CC</sub> [low side inj.]



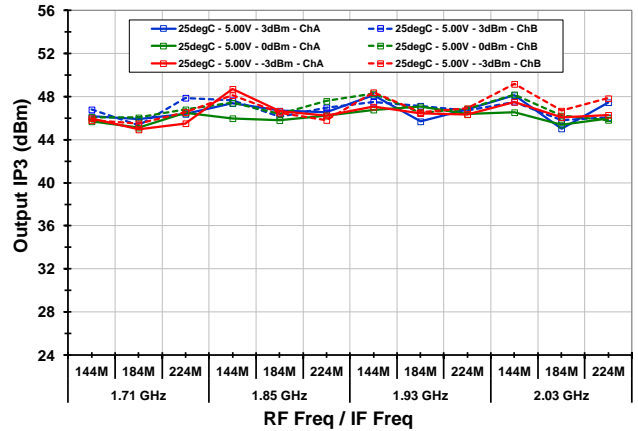
#### Output IP3 vs. V<sub>CC</sub> [high side inj.]



#### Output IP3 vs. LO level [low side inj.]

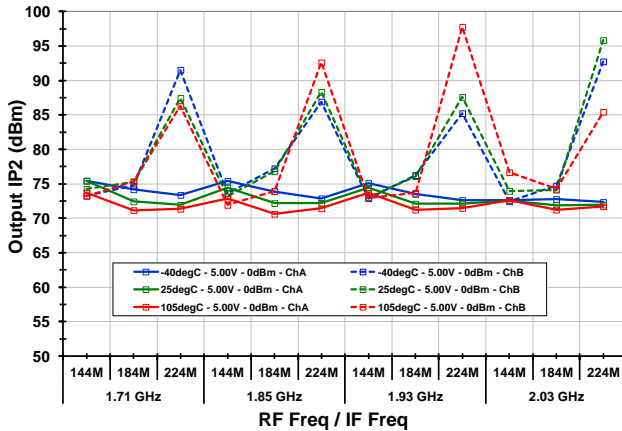


#### Output IP3 vs. LO level [high side inj.]

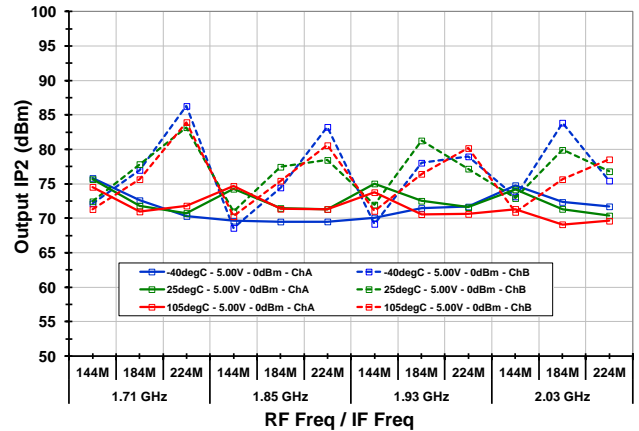


**TOCs [MAX GAIN, STD MODE, IF = 184M] OIP2 (-3-)**

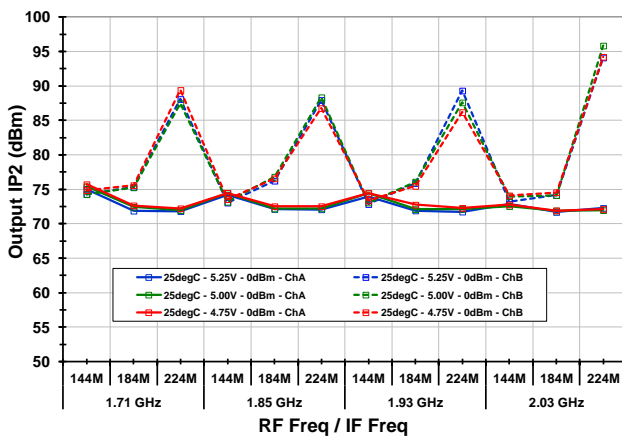
**Output IP2 vs. T<sub>CASE</sub> [low side inj.]**



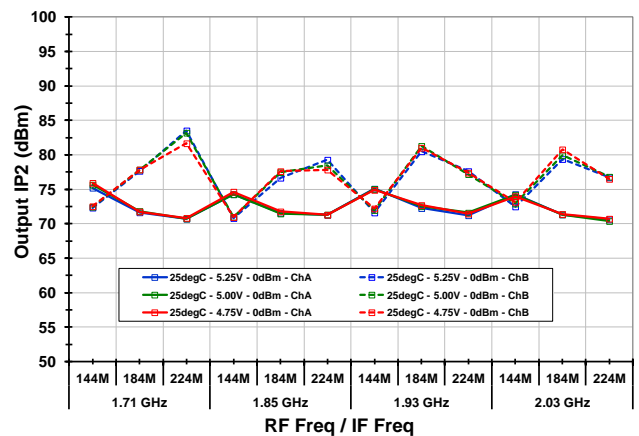
**Output IP2 vs. T<sub>CASE</sub> [high side inj.]**



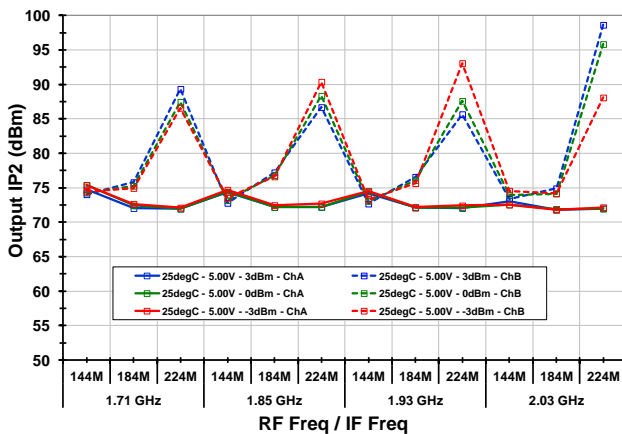
**Output IP2 vs. V<sub>CC</sub> [low side inj.]**



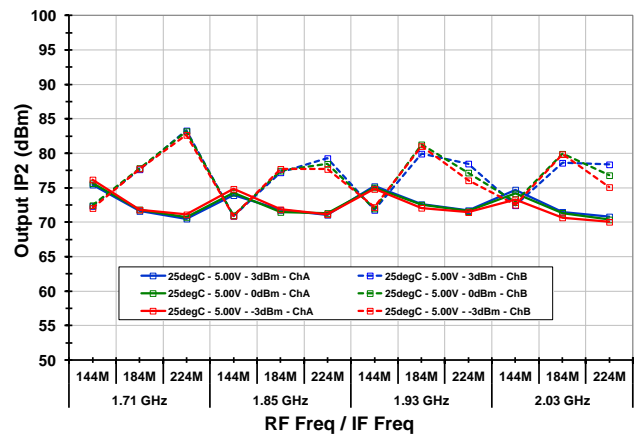
**Output IP2 vs. V<sub>CC</sub> [high side inj.]**



**Output IP2 vs. LO level [low side inj.]**

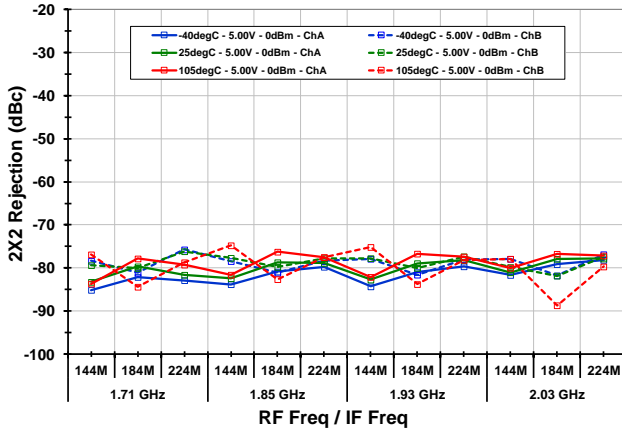


**Output IP2 vs. LO level [high side inj.]**

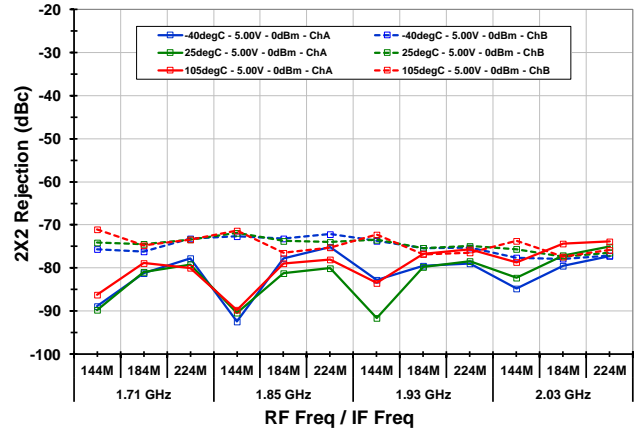


**TOCs [MAX GAIN, STD MODE, IF = 184M] 2X2 (-4-)**

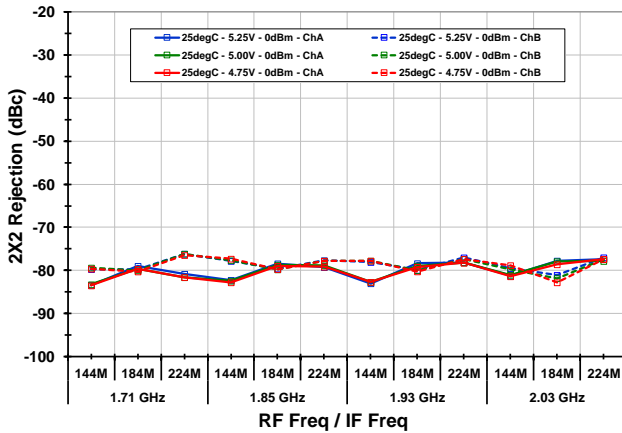
**2x2 Rejection vs. T<sub>CASE</sub> [low side inj.]**



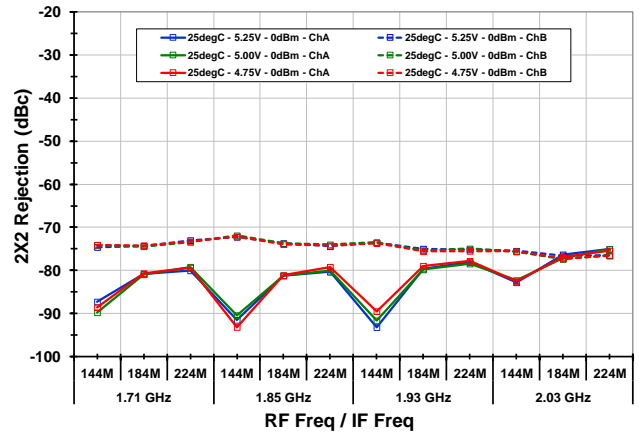
**2x2 Rejection vs. T<sub>CASE</sub> [high side inj.]**



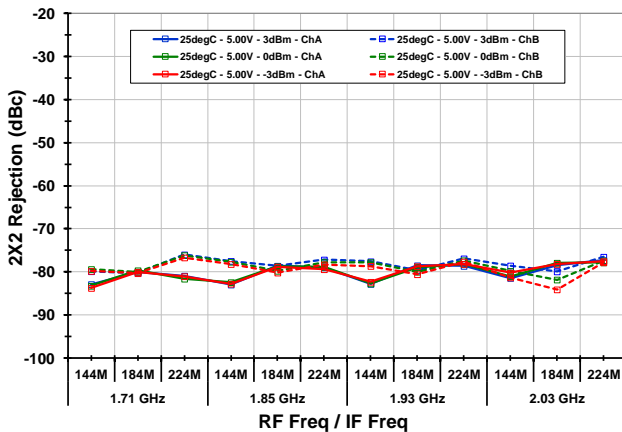
**2x2 Rejection vs. V<sub>CC</sub> [low side inj.]**



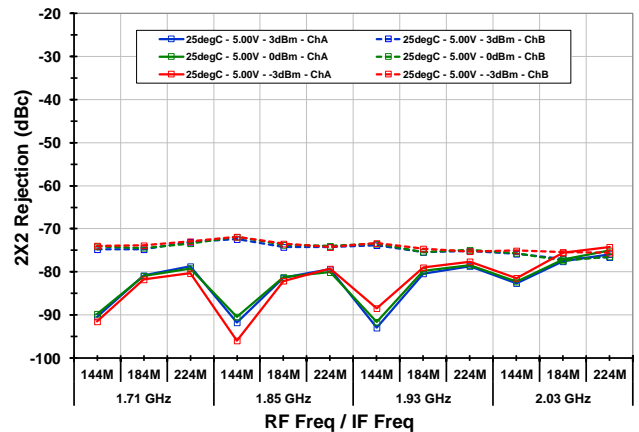
**2x2 Rejection vs. V<sub>CC</sub> [high side inj.]**



**2x2 Rejection vs. LO level [low side inj.]**

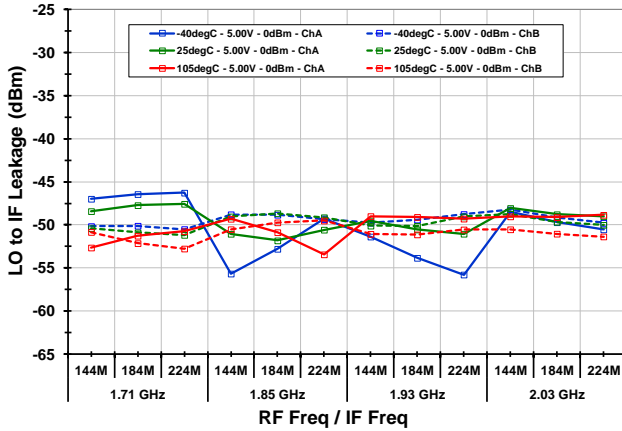


**2x2 Rejection vs. LO level [high side inj.]**

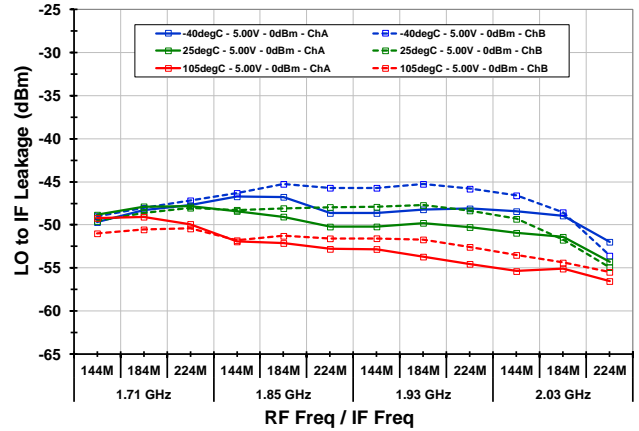


**TOCs [MAX GAIN, STD MODE, IF = 184M] LEAKAGE (-5-)**

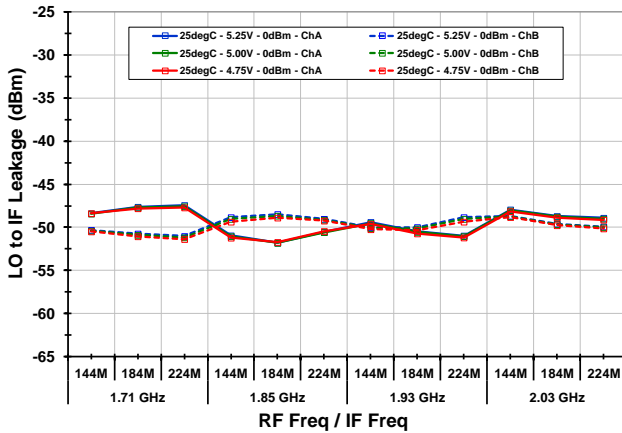
**LO to IF Leakage vs. T<sub>CASE</sub> [low side inj.]**



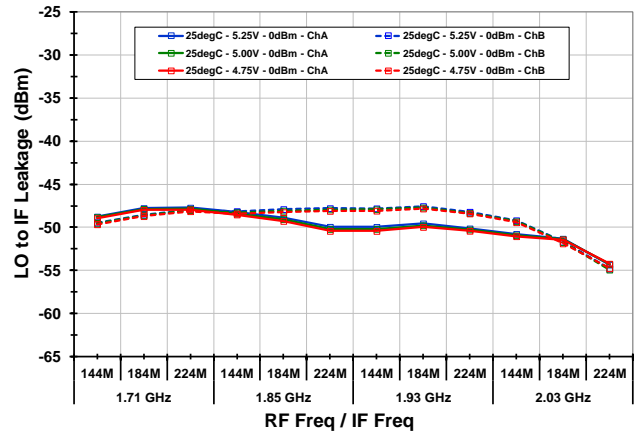
**LO to IF Leakage vs. T<sub>CASE</sub> [high side inj.]**



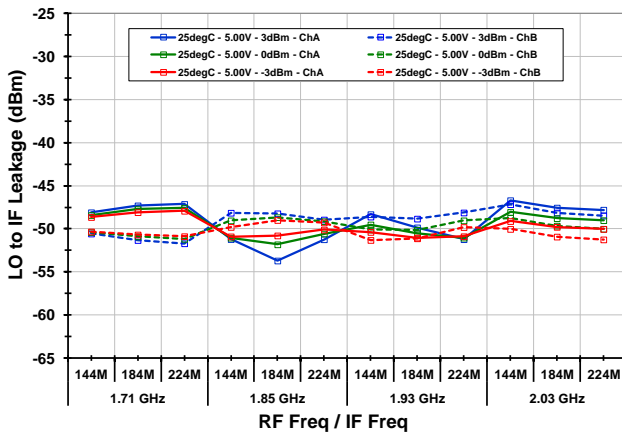
**LO to IF Leakage vs. V<sub>CC</sub> [low side inj.]**



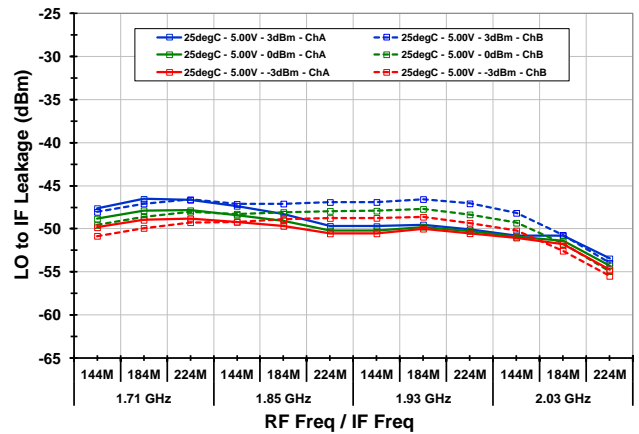
**LO to IF Leakage vs. V<sub>CC</sub> [high side inj.]**



**LO to IF Leakage vs. LO level [low side inj.]**

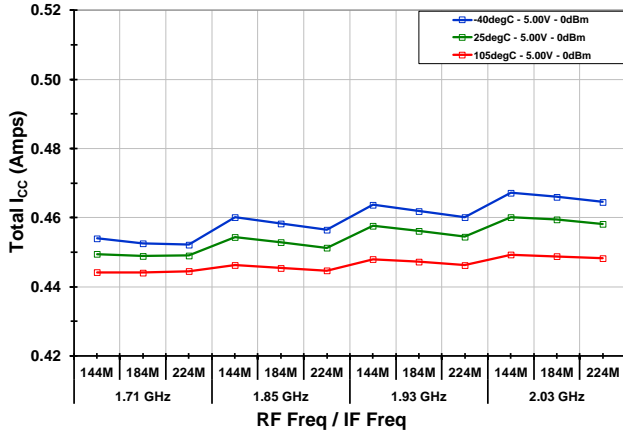


**LO to IF Leakage vs. LO level [high side inj.]**

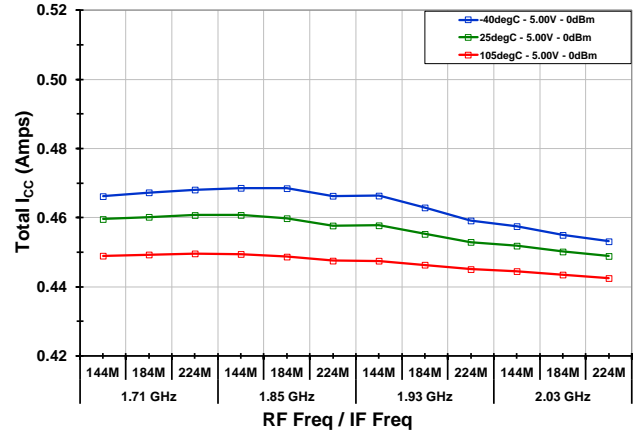


## TOCs [MAX GAIN, STD MODE, IF = 184M] DC CURRENT (-6-)

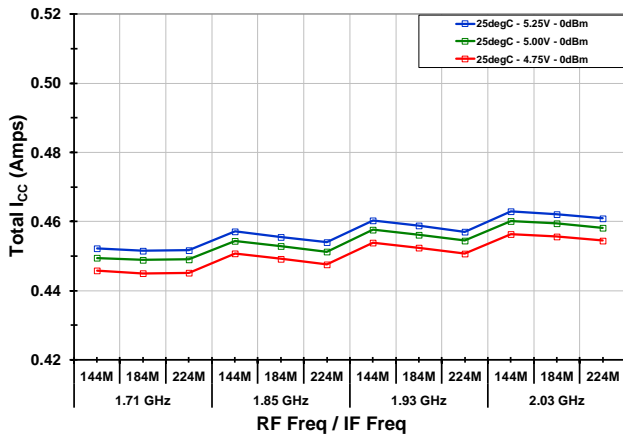
### Total Current Drain vs. T<sub>CASE</sub> [low side inj.]



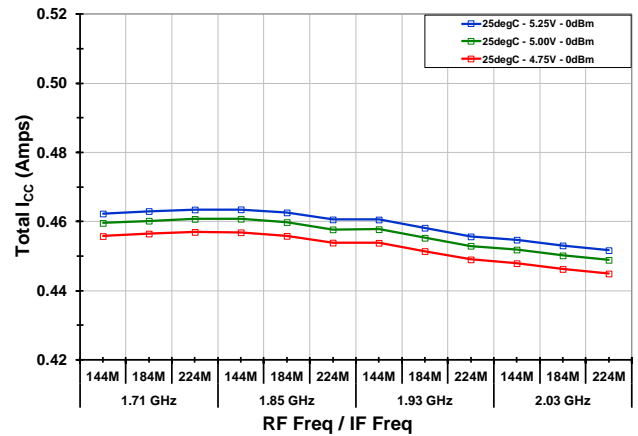
### Total Current Drain vs. T<sub>CASE</sub> [high side inj.]



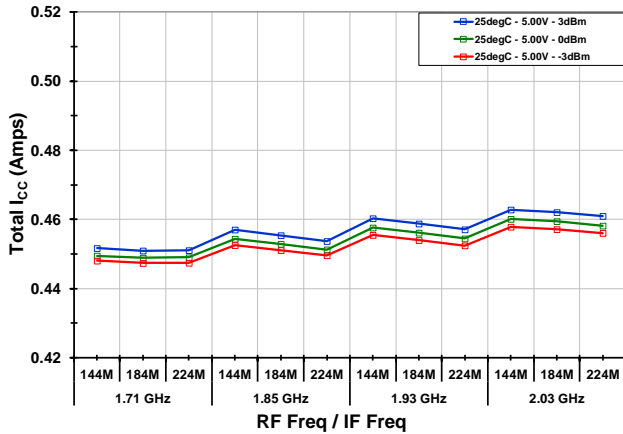
### Total Current Drain vs. V<sub>CC</sub> [low side inj.]



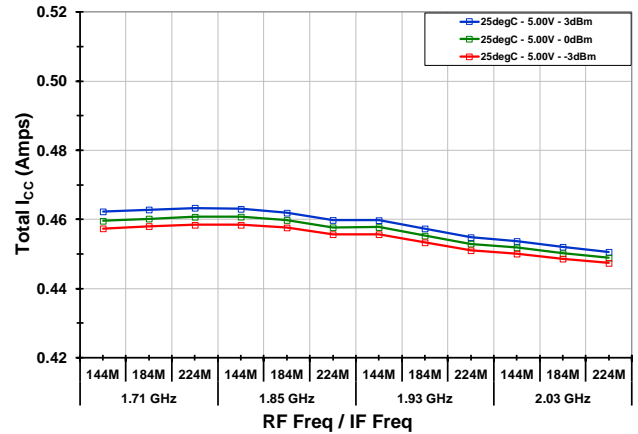
### Total Current Drain vs. V<sub>CC</sub> [high side inj.]



### Total Current Drain vs. LO level [low side inj.]



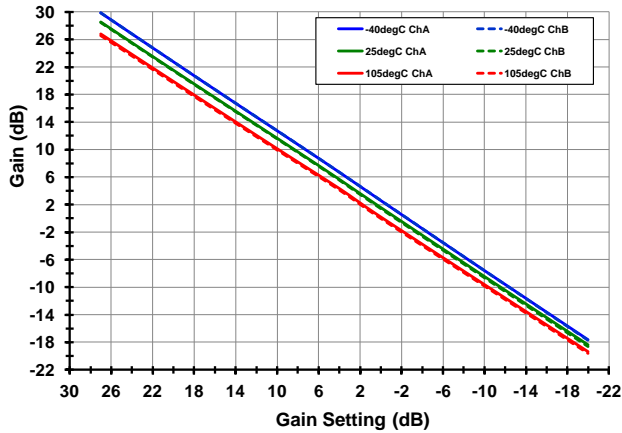
### Total Current Drain vs. LO level [high side inj.]



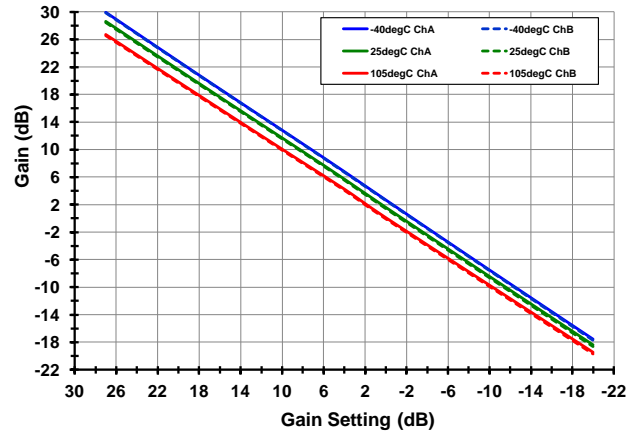


**TOCS SWEPT GAIN SETTING [STD MODE, IF = 184M, LS INJECTION] GAIN, OIP3, IIP3 (-7-)**

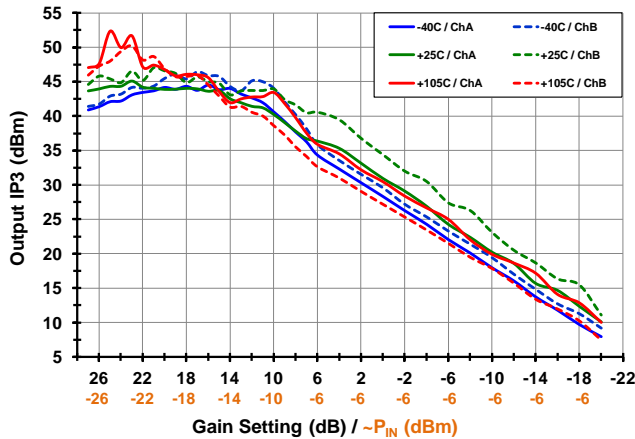
**Gain [1.71 GHz]**



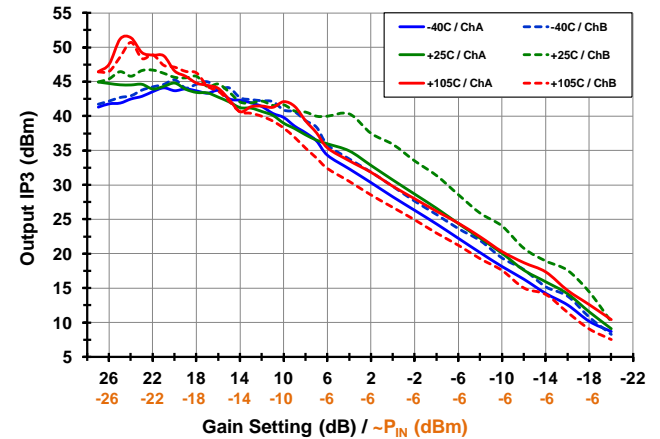
**Gain [1.88 GHz]**



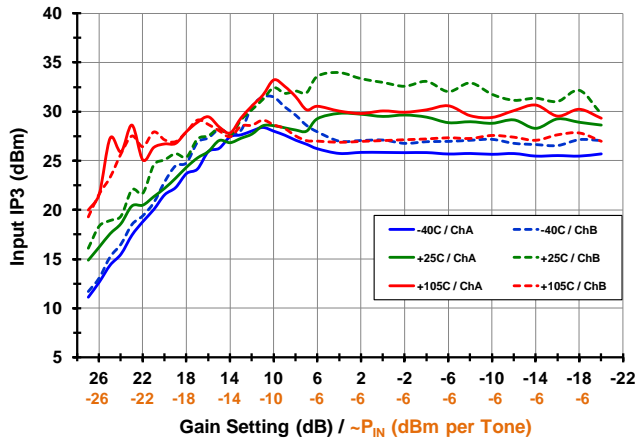
**Output IP3 [1.71 GHz]**



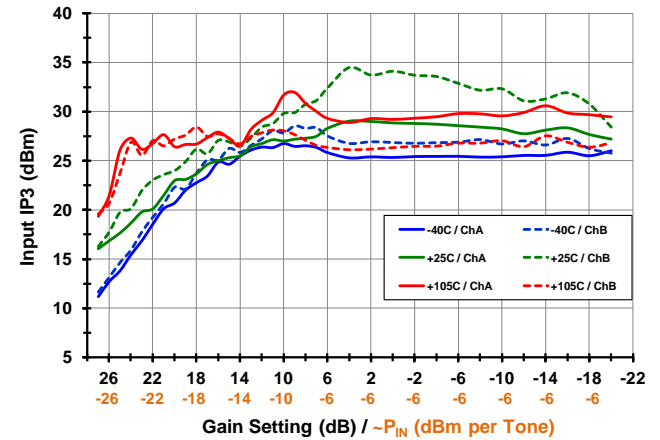
**Output IP3 [1.88 GHz]**



**Input IP3 [1.71 GHz]**

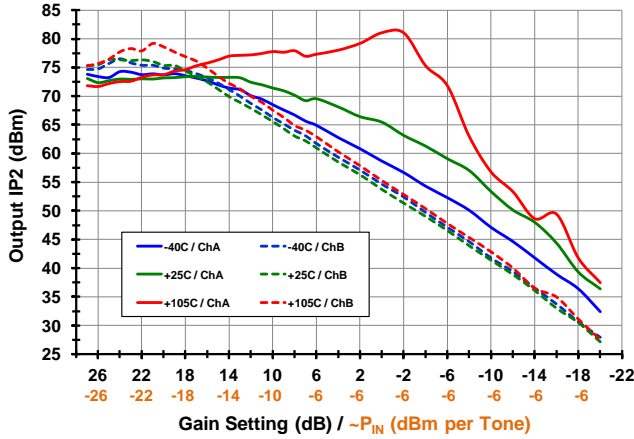


**Input IP3 [1.88 GHz]**

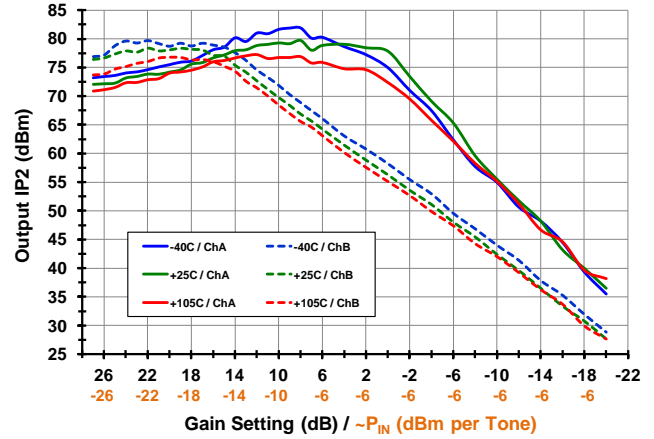


**TOCS SWEPT GAIN SETTING [STD MODE, IF = 184M, LS INJECTION] OIP2, IIP2, 2X2 (-8-)**

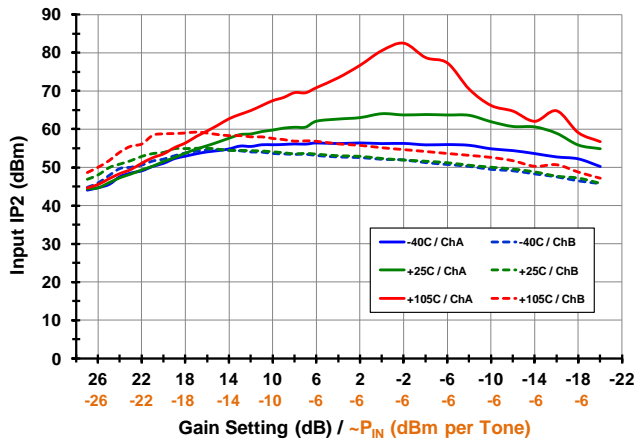
**Output IP2 [1.71 GHz]**



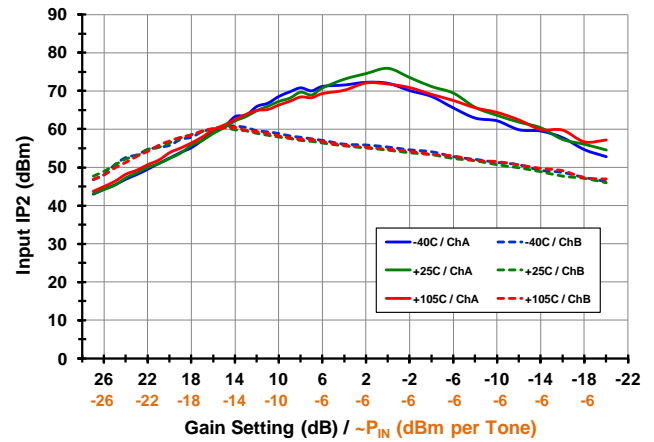
**Output IP2 [1.88 GHz]**



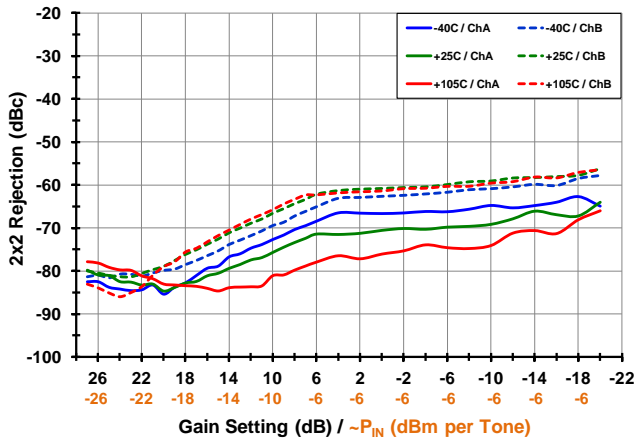
**Input IP2 [1.71 GHz]**



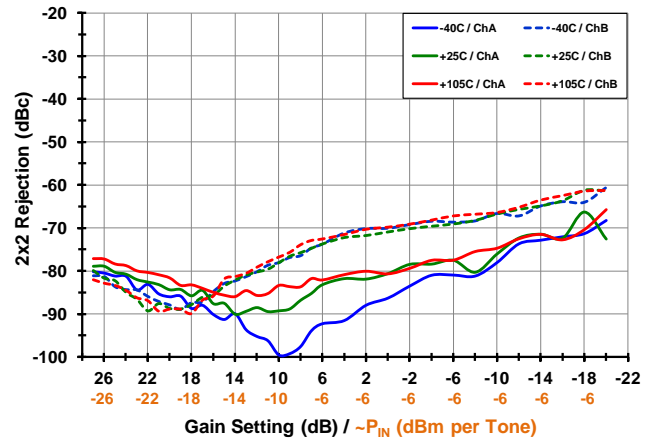
**Input IP2 [1.88 GHz]**



**2x2 Rejection [1.71 GHz]**

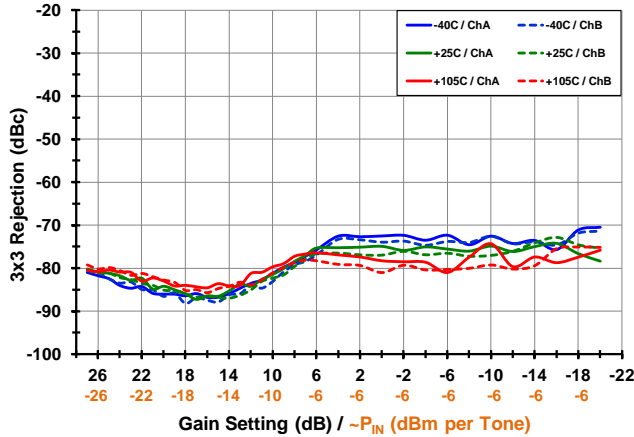


**2x2 Rejection [1.88 GHz]**

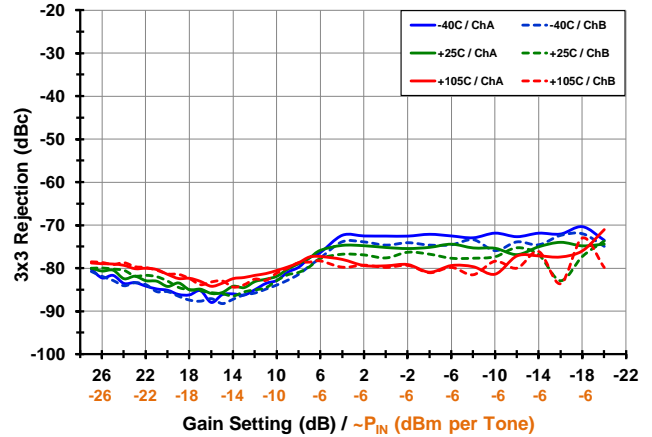


## TOCs SWEPT GAIN SETTING [STD MODE, IF = 184M, LS INJECTION] 3X3, LEAKAGE (-9-)

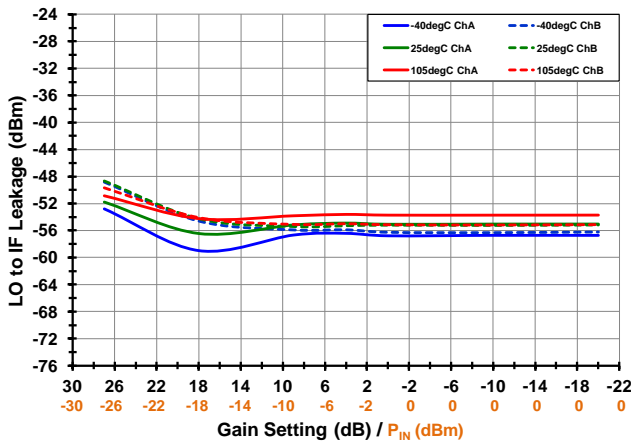
### 3x3 Rejection [1.71 GHz]



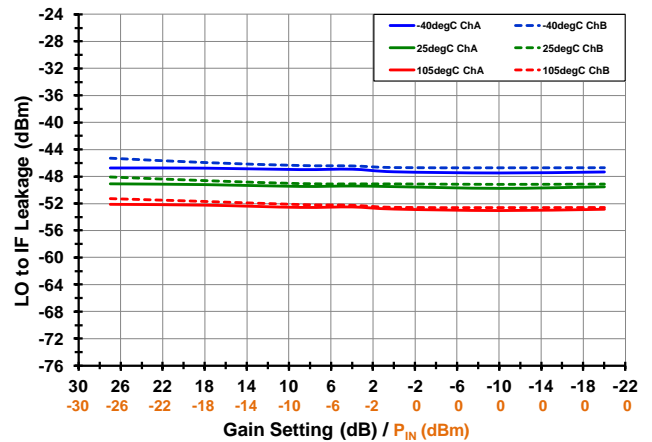
### 3x3 Rejection [1.88 GHz]



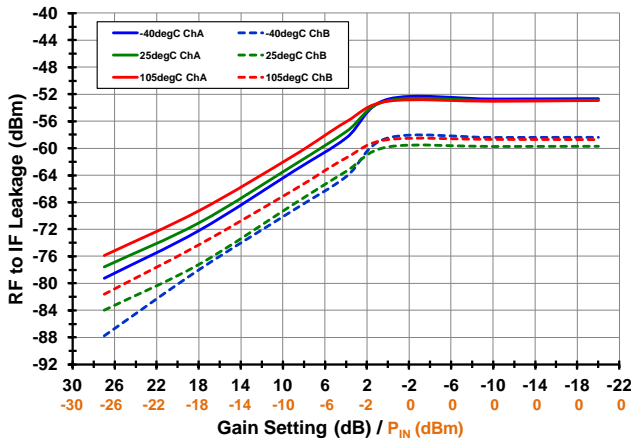
### LO to IF Leakage [low side inj, 1.85 GHz]



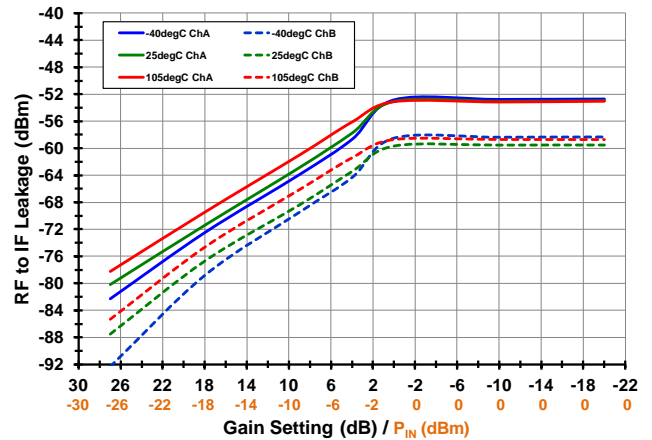
### LO to IF Leakage [high side inj., 1.85 GHz]



### RF to IF Leakage [low side inj., 1.85 GHz]

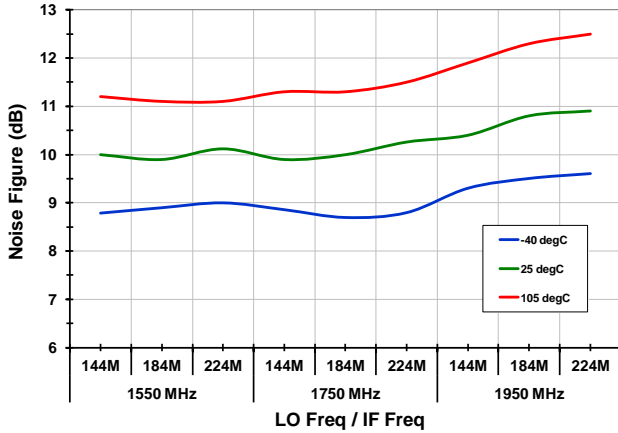


### RF to IF Leakage [high side inj., 1.85 GHz]

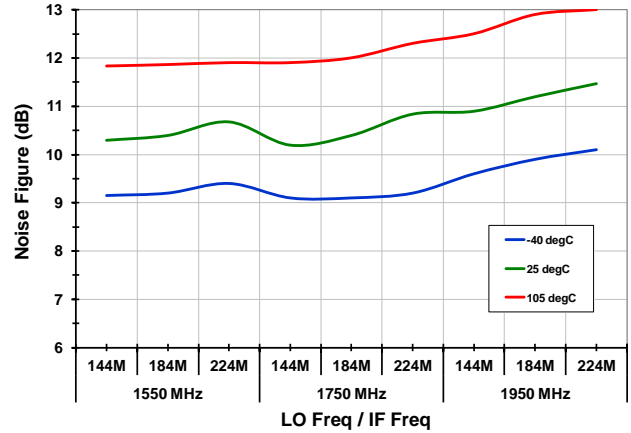


## TOCS NOISE FIGURE [STD MODE, CHA ONLY] (-10-)

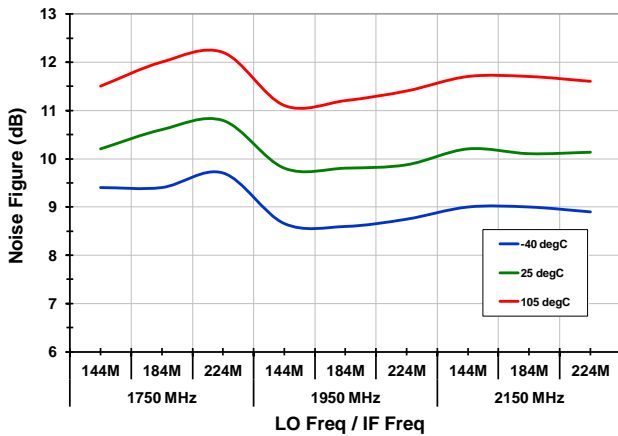
RF & IF Freq Sweep [ $G_{MAX}$ , Low Side inj.]



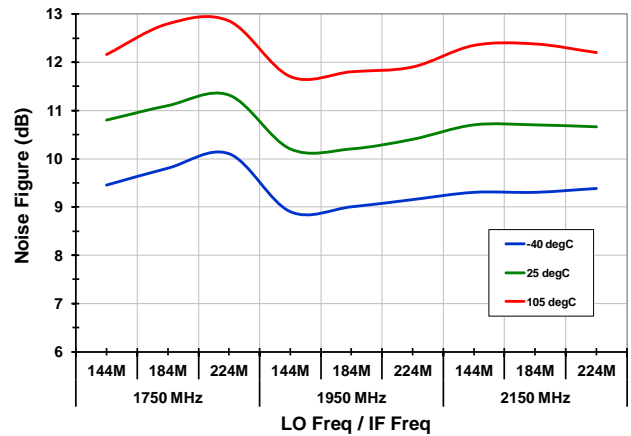
RF & IF Freq Sweep [ $G_{10dB}$ , Low Side inj.]



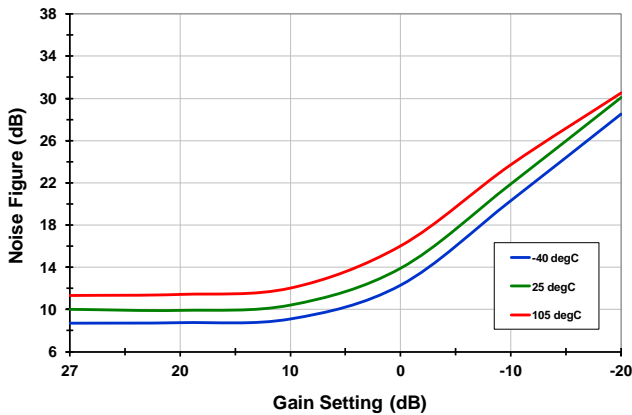
RF & IF Freq Sweep [ $G_{MAX}$ , High Side inj.]



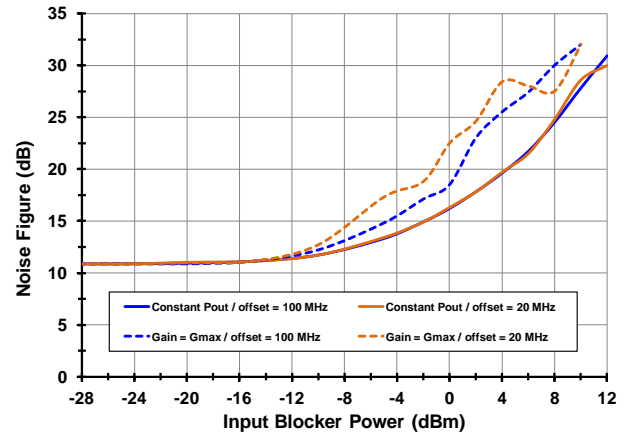
RF & IF Freq Sweep [ $G_{10dB}$ , High Side inj.]



Gain Setting Sweep [LO = 1.75 GHz, IF = 184 MHz]



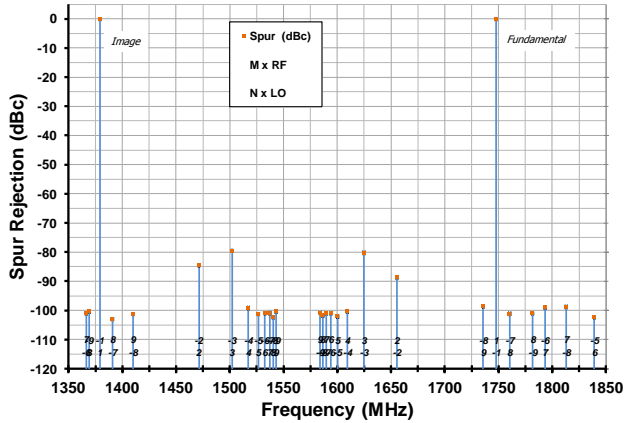
Blocker Power Sweep [LO = 2.15 GHz,  $T_A = 25C$ ]



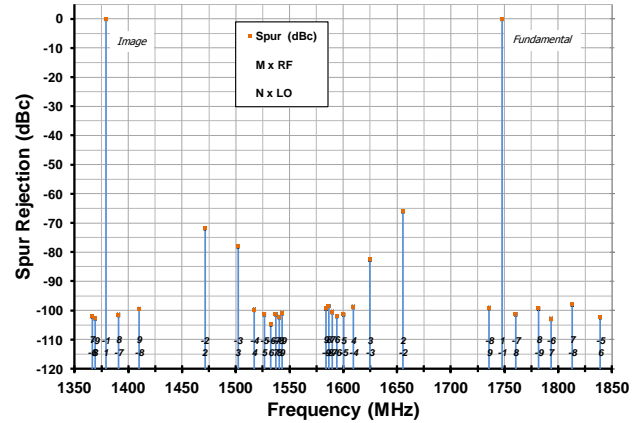


**TOCS SPURS [STD MODE, IF MATCH 184M, LO = 1.563 GHz, GAIN = 0 dB, T<sub>A</sub> = 25C] (-11-)**

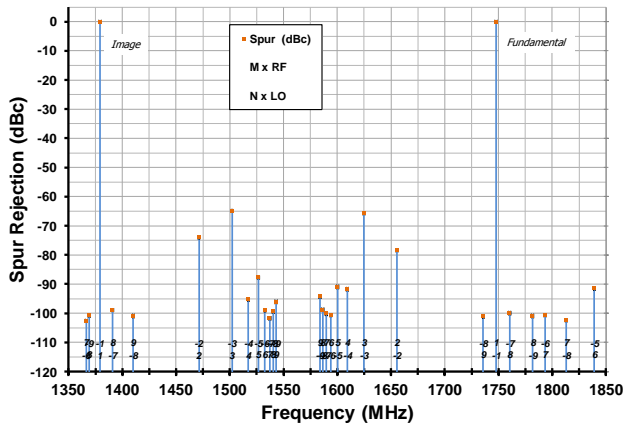
**Close-In Spurs [ChA, P<sub>RF</sub> = -5 dBm]**



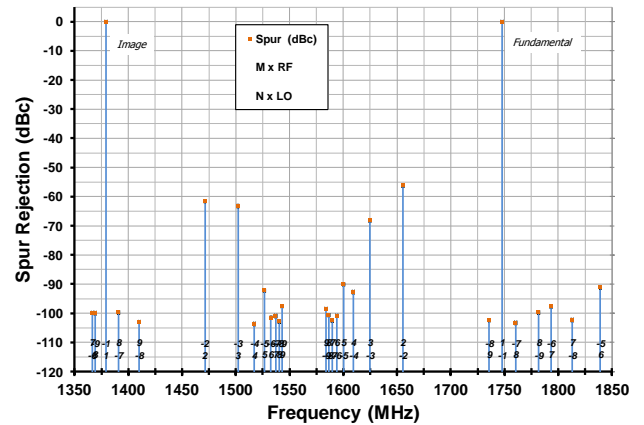
**Close-In Spurs [ChB, P<sub>RF</sub> = -5 dBm]**



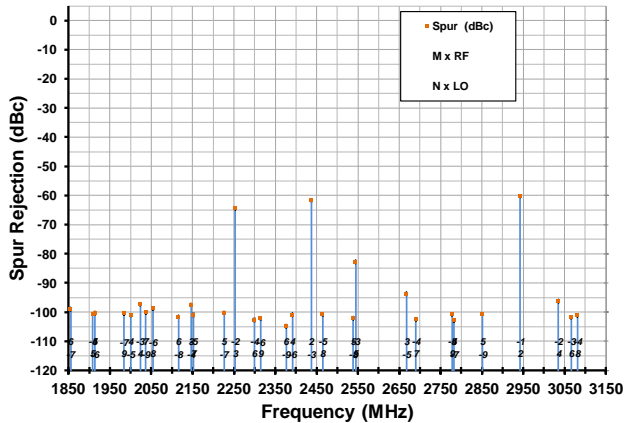
**Close-In Spurs [ChA, P<sub>RF</sub> = 0 dBm]**



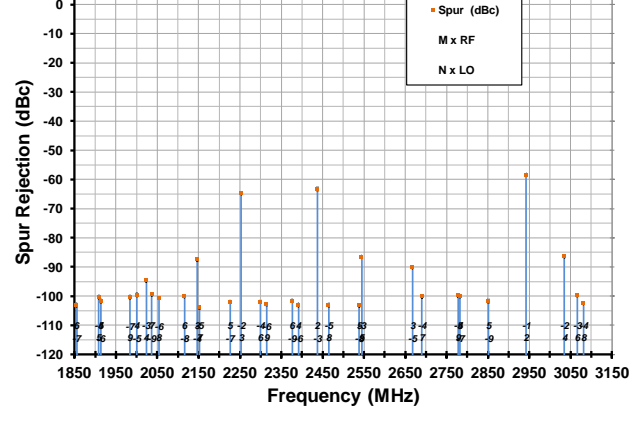
**Close-In Spurs [ChB, P<sub>RF</sub> = 0 dBm]**



**Other Spurs [ChA, P<sub>RF</sub> = -5 dBm]**

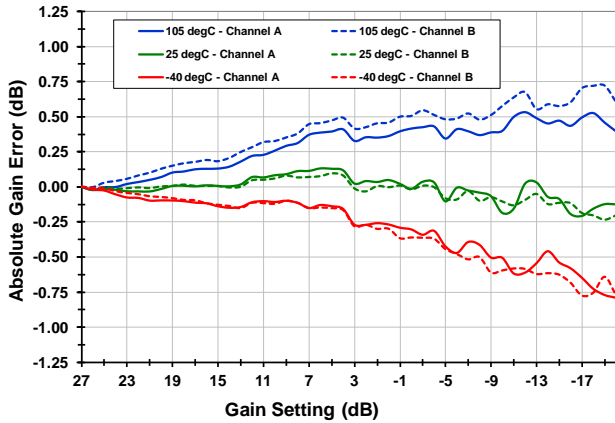


**Other Spurs [ChB, P<sub>RF</sub> = -5 dBm]**

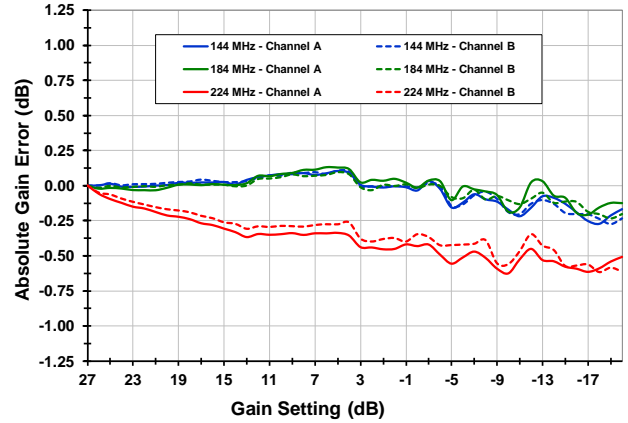


**GAIN ACCURACY, BOARD LOSSES (-12-)**

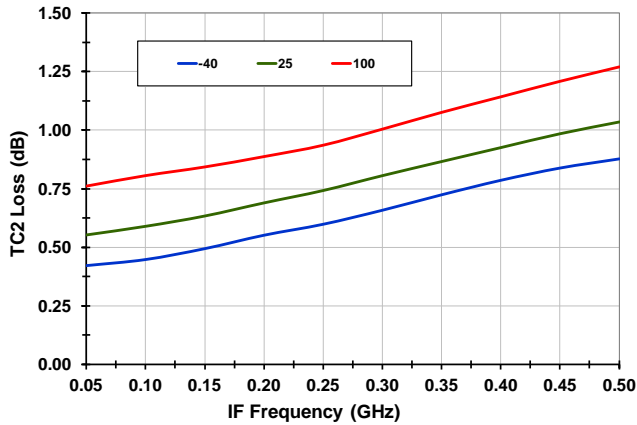
**Accuracy vs. T<sub>CASE</sub> [RF = 1.85 GHz, IF = 184 MHz]**



**Accuracy vs. IF Freq [RF = 1.85 GHz, T<sub>CASE</sub> = 25C]**

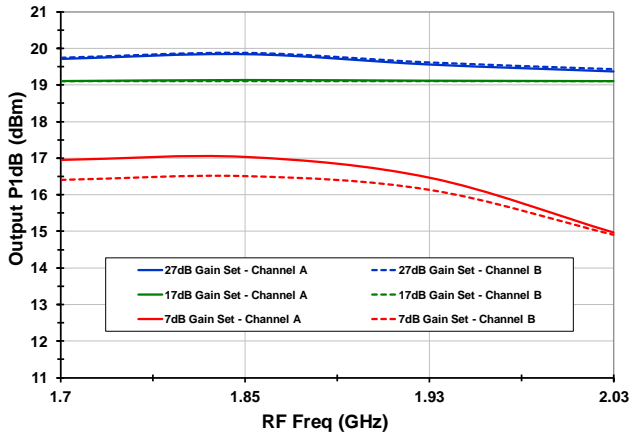


**Transformer TC2-7T Loss vs. Temperature**

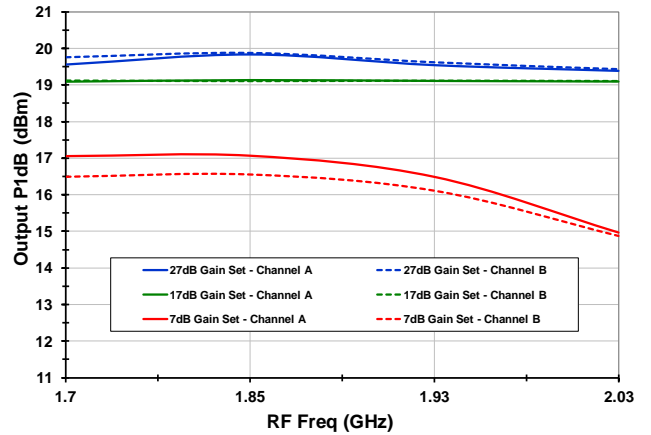


## TOCs P<sub>1dB</sub> [STD MODE] (-13-)

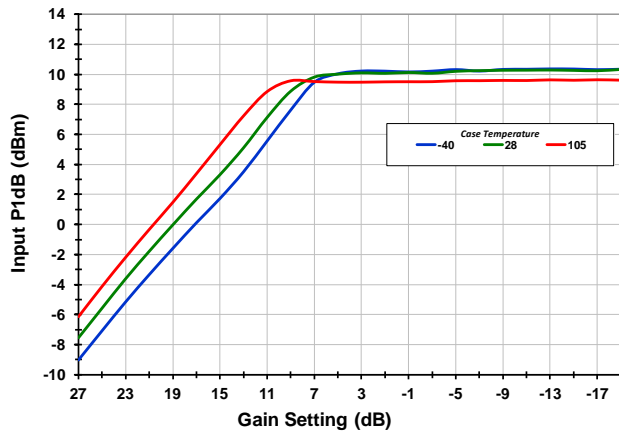
**P1dB RF Sweep [IF = 184 MHz, Low Side inj.]**



**P1dB RF Sweep [IF = 184 MHz, High Side inj.]**



**P1dB Gain Set Sweep [RF = 1.88 GHz IF = 184 MHz]**



Sampling IF Receiver

1710MHz to 2050MHz

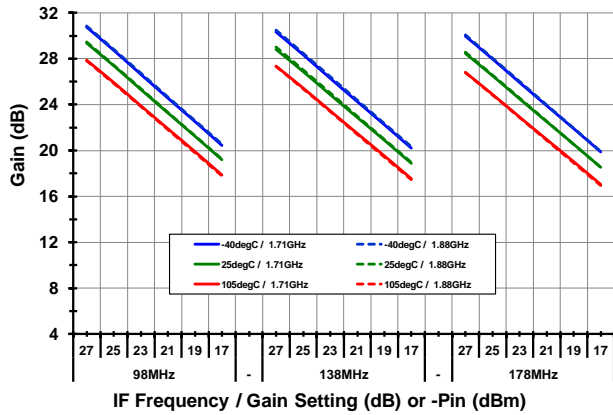
**TYPICAL OPERATING CONDITIONS (STD MODE, 138MHz IF)****Unless otherwise noted, the following conditions apply to the 138MHz Typ Ops Graphs:**

- BOM2 Applications circuit with 138 MHz IF Center +/- 40 MHz bandwidth network to provide matching to 100 ohm differential load provided by 2:1 transformer (see page 51)
- P<sub>out</sub> ~ +1 dBm
- P<sub>IN</sub> from -27 to -6 dBm (Gain Setting Adjusted to yield P<sub>out</sub> ~ +1 dBm without exceeding -6 dBm P<sub>IN</sub>)
- Tone Spacing = 800 KHz
- Device configured in Standard Mode with Low Side Injection
- T<sub>CASE</sub> = 25C, V<sub>CC</sub> = 5.00 V, LO Power = 0 dBm
- RF Frequency: 1.88 GHz
- IF Frequency: 138 MHz
- Transformer Losses are de-embedded
- Input RF trace Losses are not de-embedded

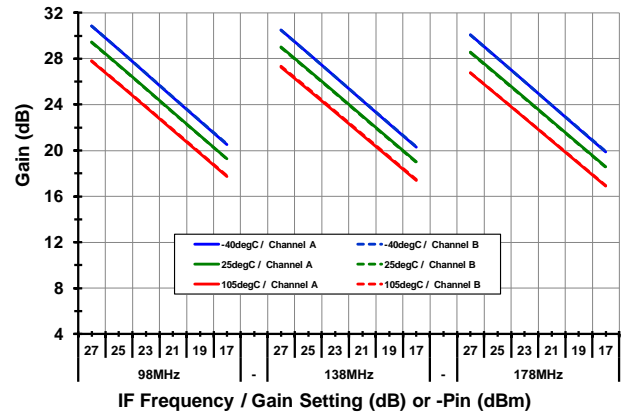


### TOCs [STD MODE, IF = 138M, LS INJECTION] GAIN, OIP3, OIP2 (-14-)

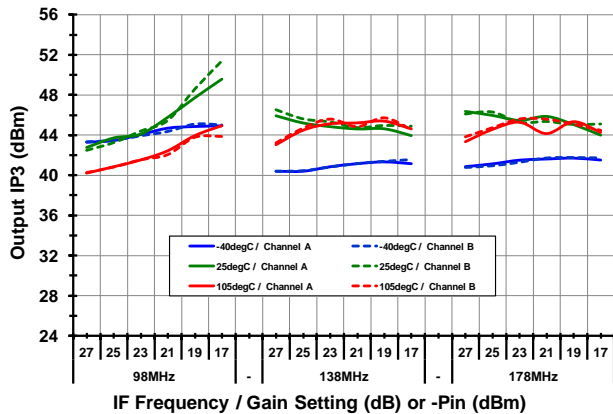
#### Gain vs. T<sub>CASE</sub> [1.71 GHz RF]



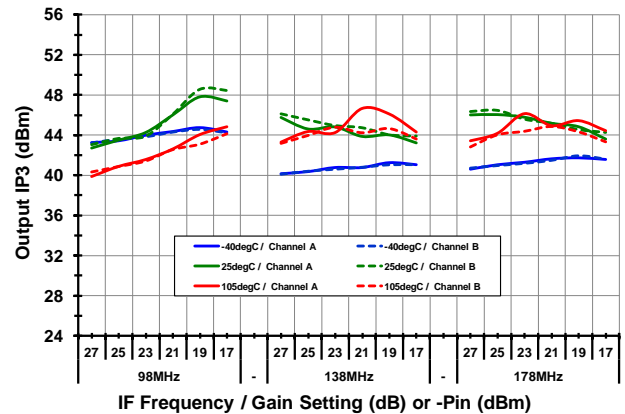
#### Gain vs. T<sub>CASE</sub> [1.88 GHz RF]



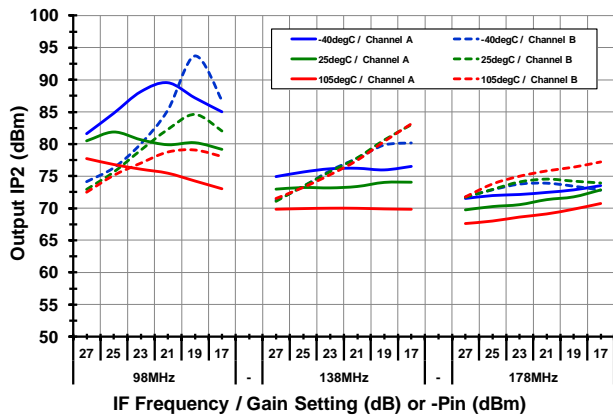
#### Output IP3 vs. T<sub>CASE</sub> [1.71 GHz RF]



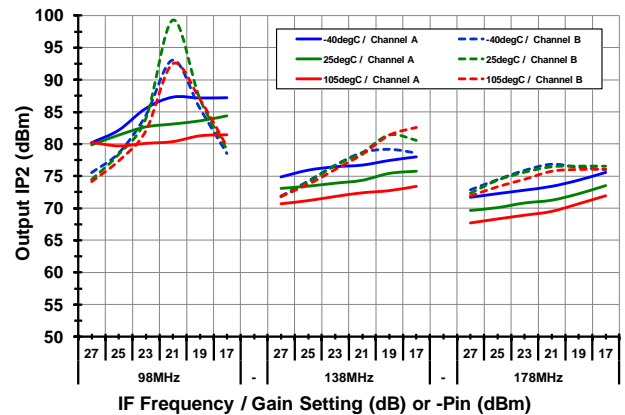
#### Output IP3 vs. T<sub>CASE</sub> [1.88 GHz RF]



#### Output IP2 vs. T<sub>CASE</sub> [1.71 GHz RF]

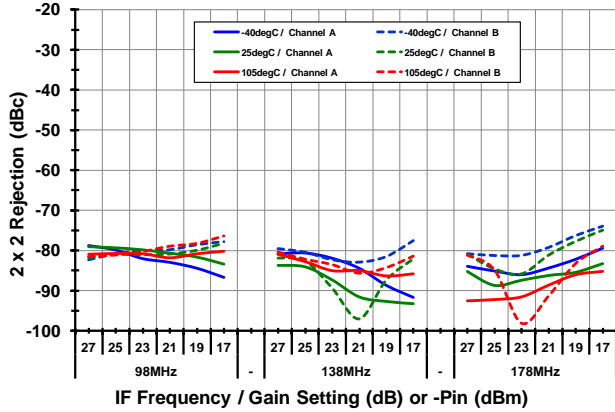


#### Output IP2 vs. T<sub>CASE</sub> [1.88 GHz RF]

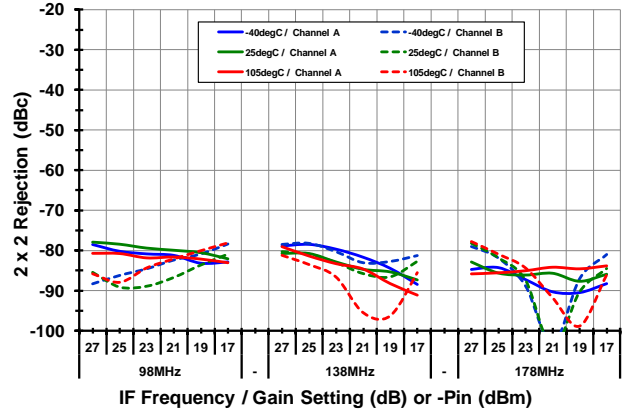


**TOCs [STD MODE, IF = 138M, LS INJECTION] 2X2, 3X3, LEAKAGE (-15-)**

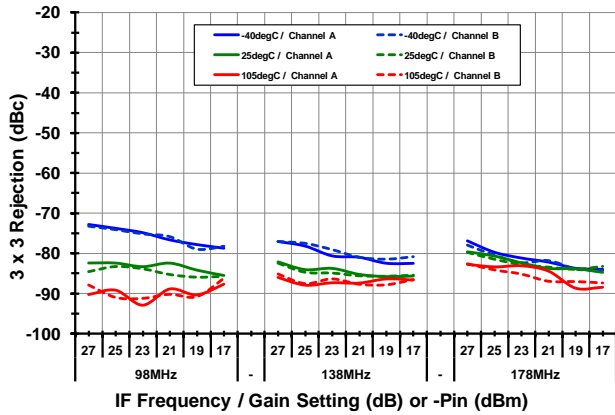
**2 X 2 vs. T<sub>CASE</sub> [1.71 GHz RF]**



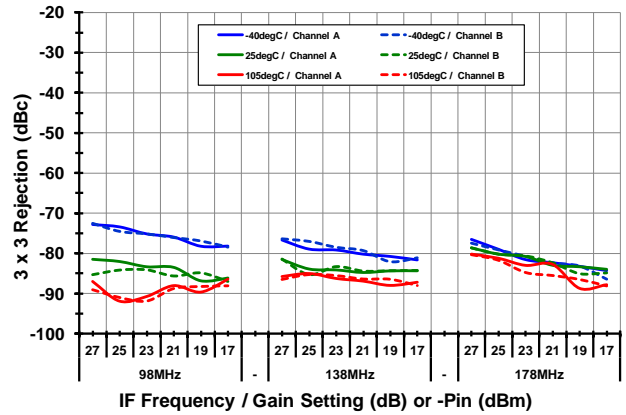
**2 X 2 vs. T<sub>CASE</sub> [1.88 GHz RF]**



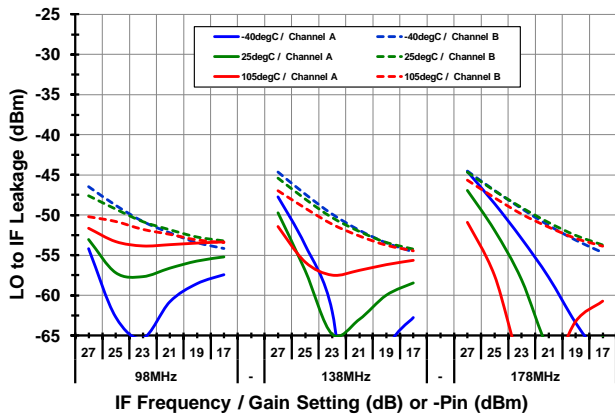
**3 x 3 vs. T<sub>CASE</sub> [1.71 GHz RF]**



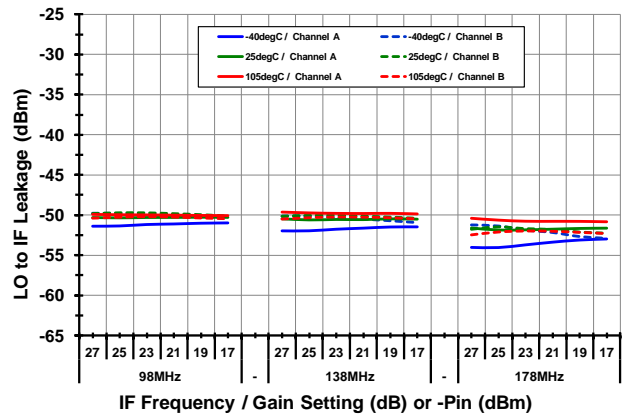
**3 x 3 vs. T<sub>CASE</sub> [1.88 GHz RF]**



**LO to IF Leakage vs. T<sub>CASE</sub> [1.71 GHz RF]**

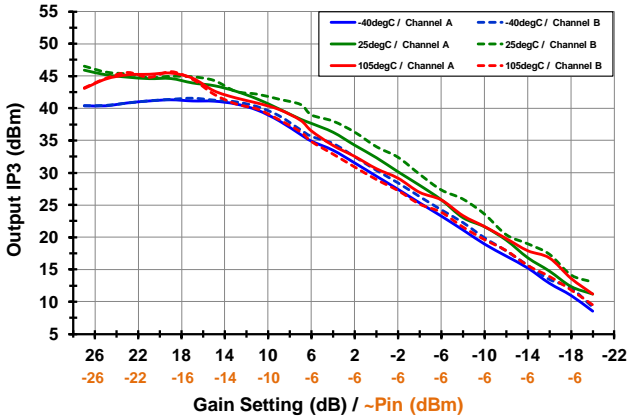


**LO to IF Leakage vs. T<sub>CASE</sub> [1.88 GHz RF]**

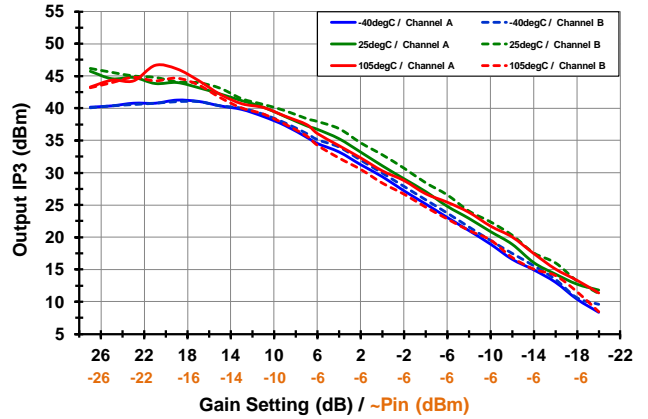


**TOCs [STD MODE, IF = 138M, LS INJECTION] OIP3, OIP3, 2X2 (-16-)**

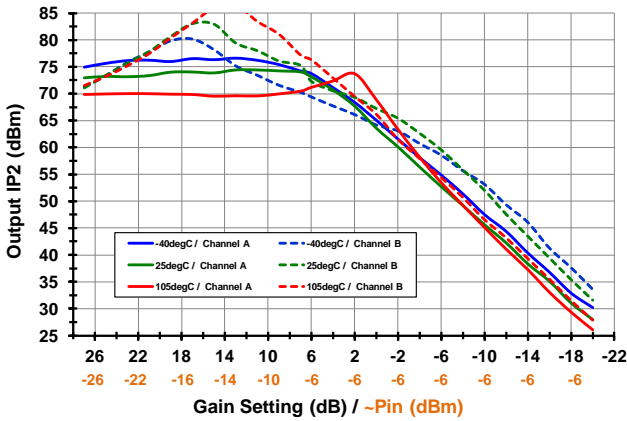
**Output IP3 [1.71 GHz RF]**



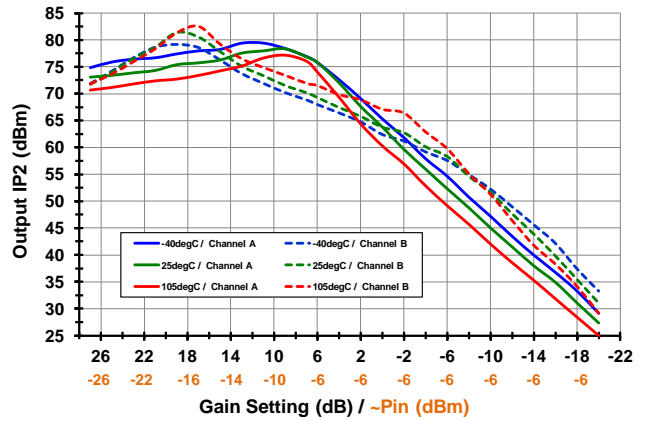
**Output IP3 [1.88 GHz RF]**



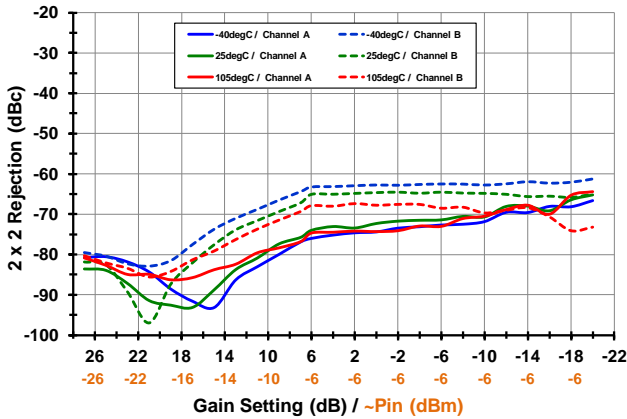
**Output IP2 [1.71 GHz RF]**



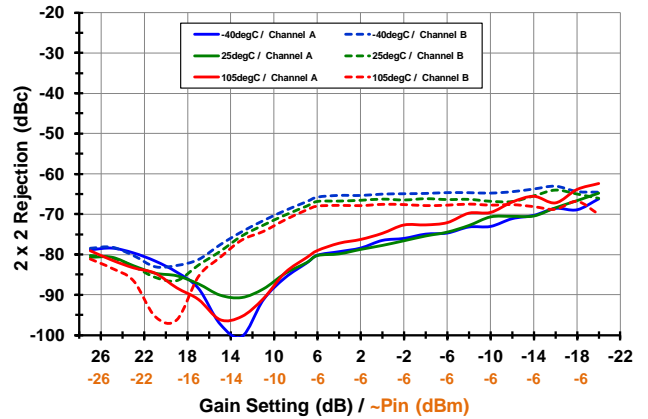
**Output IP2 [1.88 GHz RF]**



**2x2 Rejection [1.71 GHz RF]**

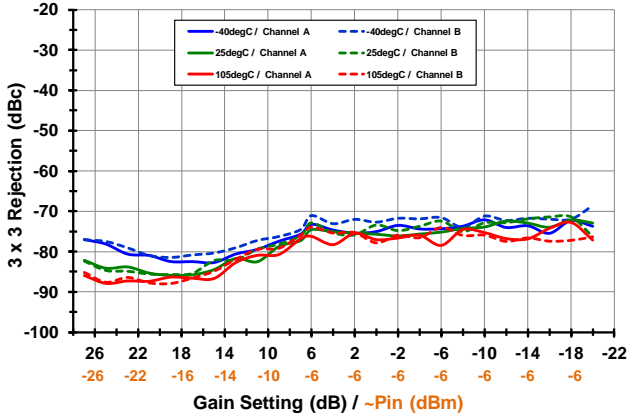


**2x2 Rejection [1.88 GHz RF]**

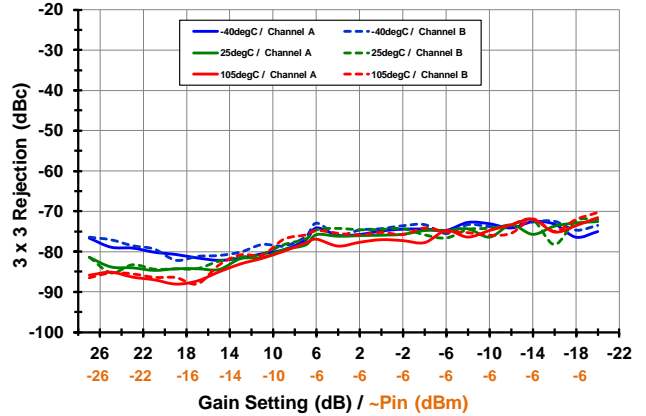


**TOCs [STD MODE, IF = 138M, LS INJECTION] 3X3, LEAKAGE (-17-)**

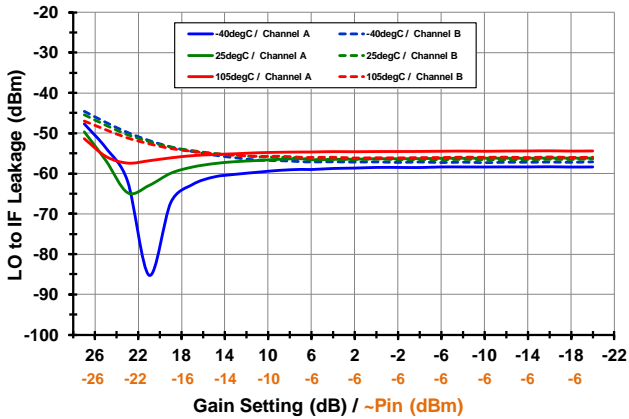
**3x3 Rejection [1.71 GHz RF]**



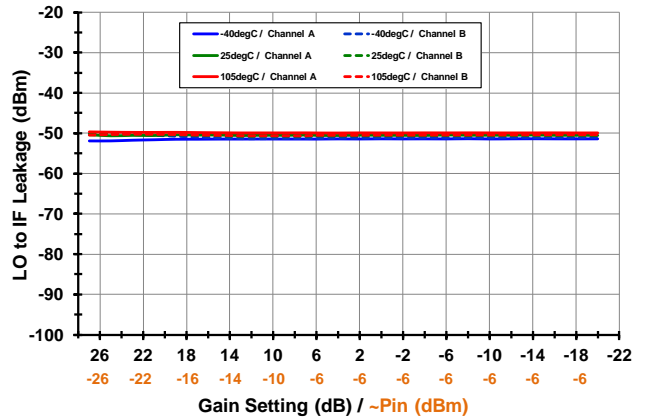
**3x3 Rejection [1.88 GHz RF]**



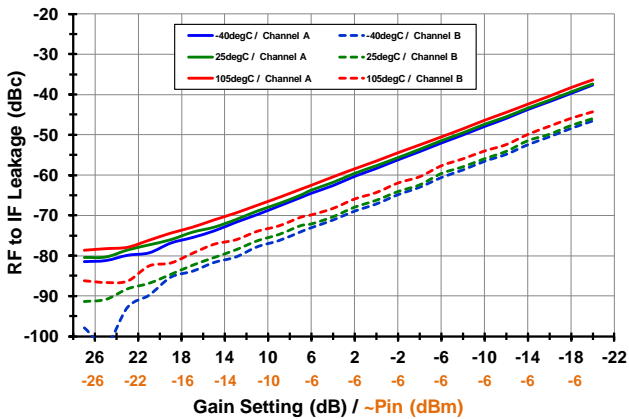
**LO to IF Leakage [1.71 GHz RF]**



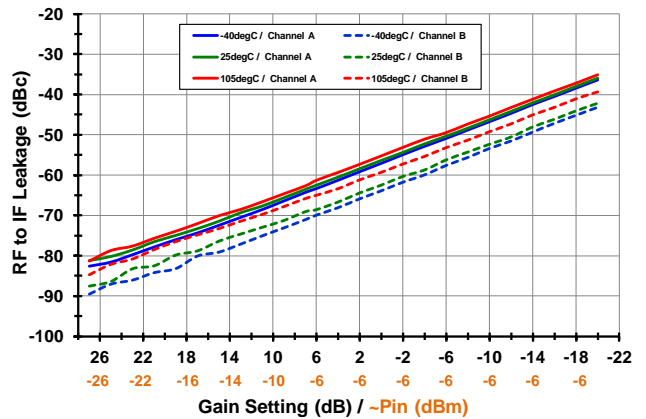
**LO to IF Leakage [1.88 GHz RF]**



**RF to IF Leakage [1.71 GHz RF]**



**RF to IF Leakage [1.88 GHz RF]**



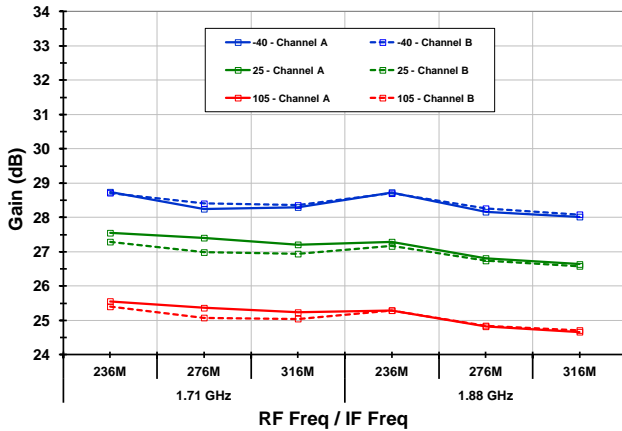
**TYPICAL OPERATING CONDITIONS (STD MODE, 276MHz IF)**

Unless otherwise noted, the following conditions apply to the 276MHz Typ Ops Graphs:

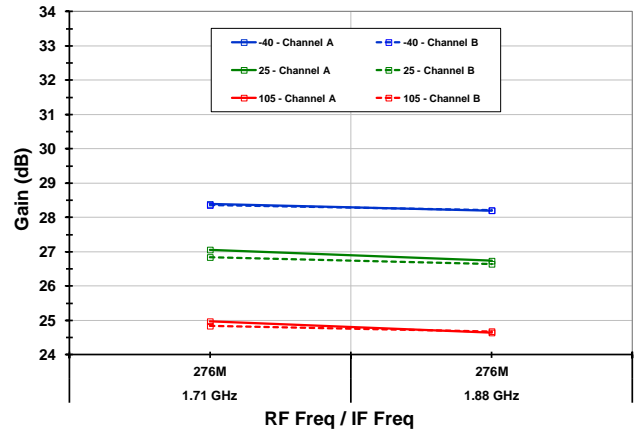
- BOM2 Applications circuit with 276 MHz IF Center +/- 40 MHz bandwidth network to provide matching to 100 ohm differential load provided by 2:1 transformer (see page 51)
- P<sub>out</sub> ~ +1 dBm
- P<sub>IN</sub> from -27 to -6 dBm (Gain Setting Adjusted to yield P<sub>out</sub> ~ +1 dBm without exceeding -6 dBm P<sub>IN</sub>)
- Tone Spacing = 800 KHz
- Device configured in Standard Mode with Low Side Injection
- T<sub>CASE</sub> = 25C, V<sub>CC</sub> = 5.00 V, LO Power = 0 dBm
- RF Frequency: 1.88 GHz
- IF Frequency: 276 MHz
- Transformer Losses are de-embedded
- Input RF trace Losses are not de-embedded

### TOCs [MAX GAIN, IF = 276M, STD MODE] GAIN, OIP3, OIP2 (-18-)

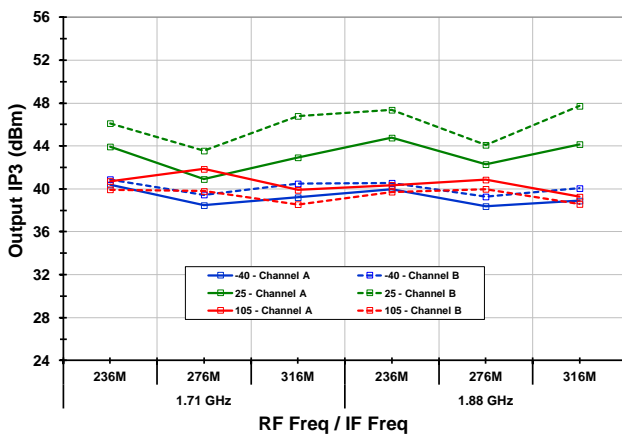
#### Gain vs. T<sub>CASE</sub> [low side inj.]



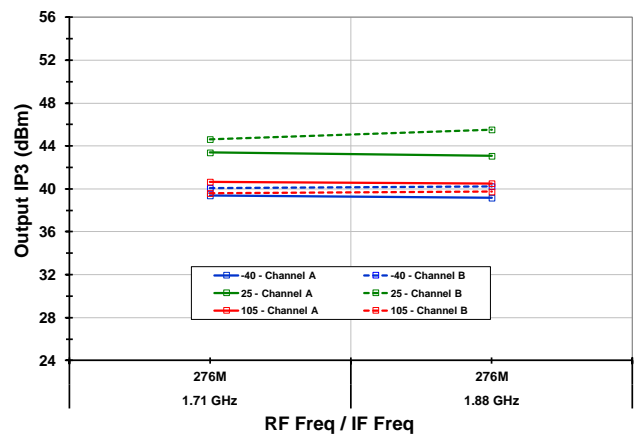
#### Gain vs. T<sub>CASE</sub> [high side inj.]



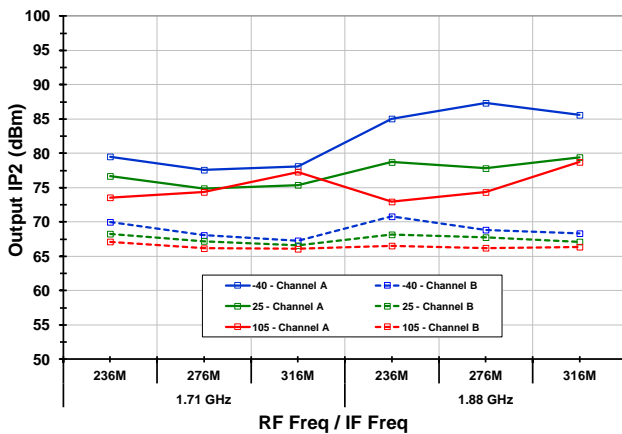
#### Output IP3 vs. T<sub>CASE</sub> [low side inj.]



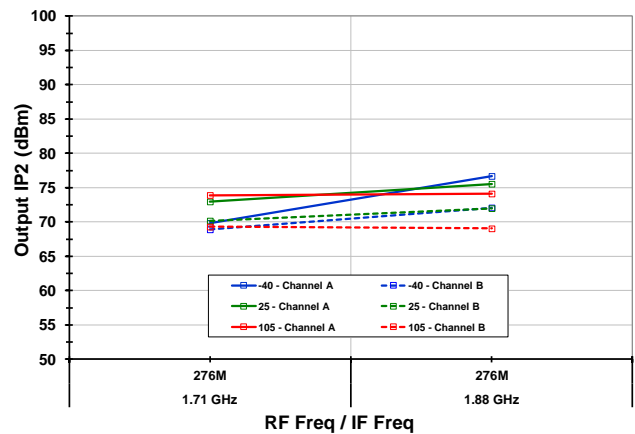
#### Output IP3 vs. T<sub>CASE</sub> [high side inj.]



#### Output IP2 vs. T<sub>CASE</sub> [low side inj.]

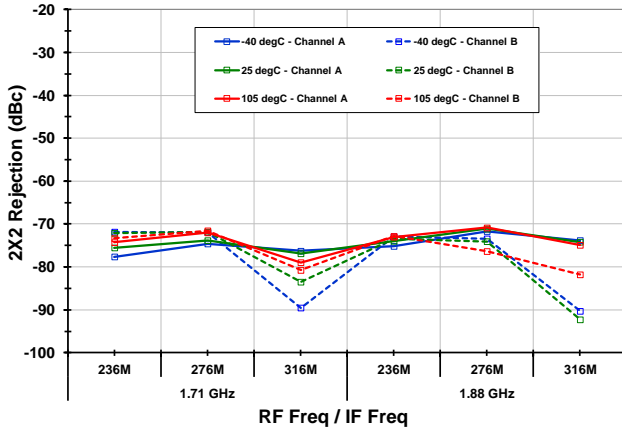


#### Output IP2 vs. T<sub>CASE</sub> [high side inj.]

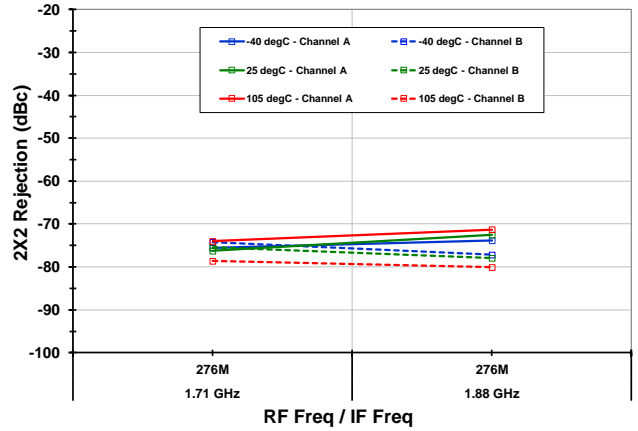


**TOCs [MAX GAIN, IF = 276M, STD MODE] 2X2, 3X3, LEAKAGE (-19-)**

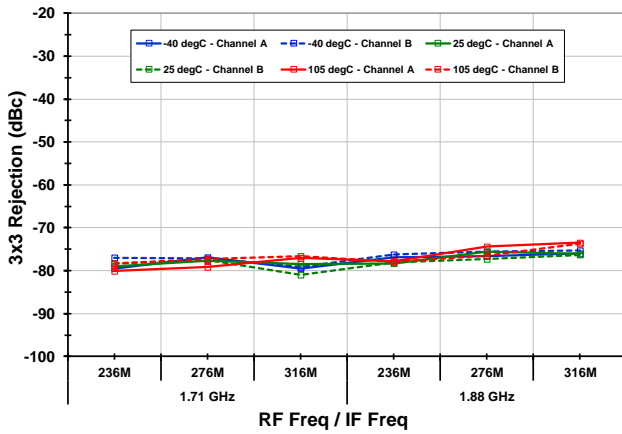
**2 X 2 vs. T<sub>CASE</sub> [low side inj.]**



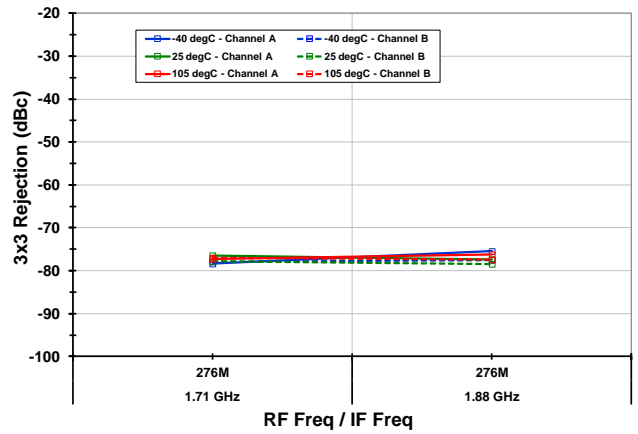
**2 X 2 vs. T<sub>CASE</sub> [high side inj.]**



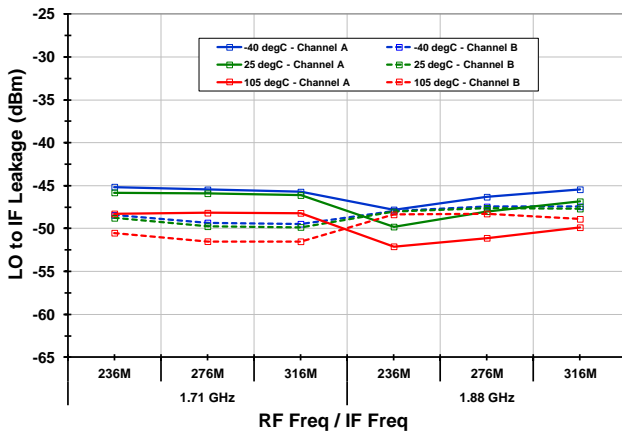
**3 x 3 vs. T<sub>CASE</sub> [low side inj.]**



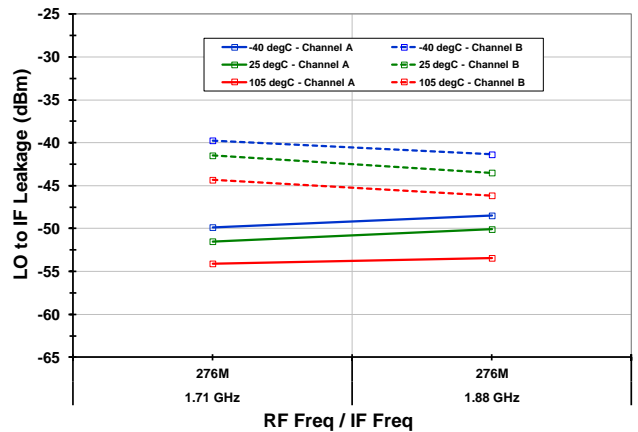
**3 x 3 vs. T<sub>CASE</sub> [high side inj.]**



**LO to IF Leakage vs. T<sub>CASE</sub> [low side inj.]**

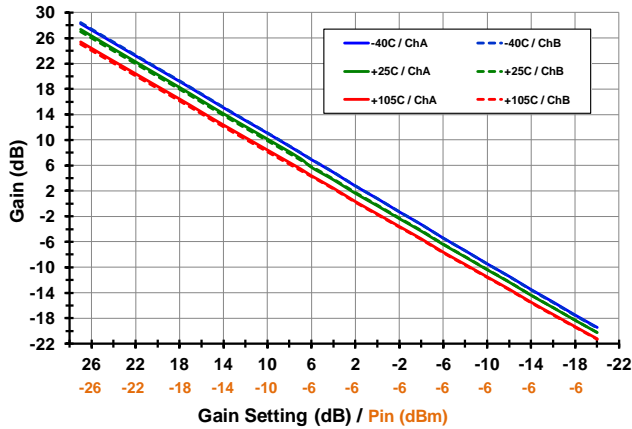


**LO to IF Leakage vs. T<sub>CASE</sub> [high side inj.]**

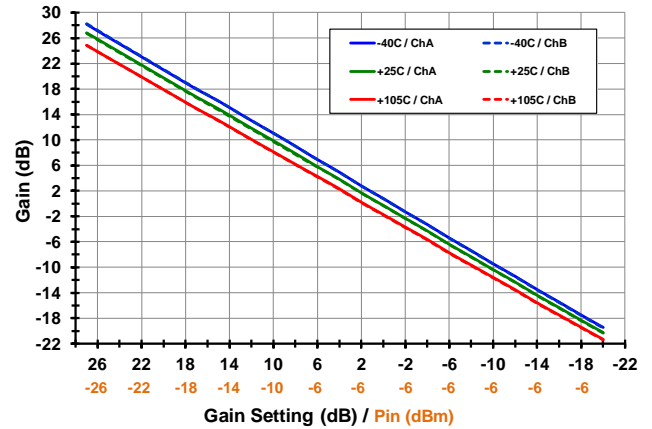


## TOCS SWEEPED GAIN SETTING [STD MODE, IF = 276M, LS INJECTION] GAIN, OIP3, IIP3 (-20-)

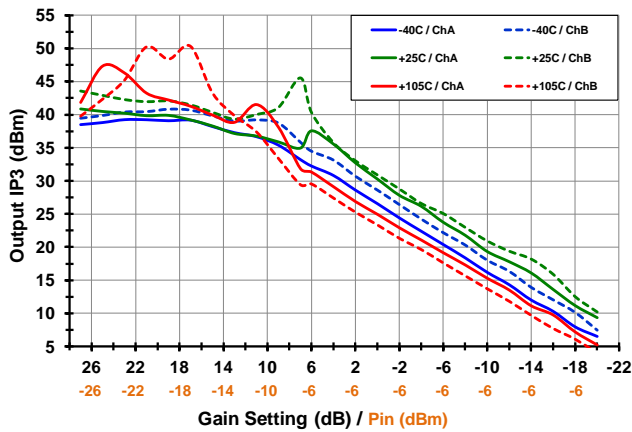
Gain [1.71 GHz]



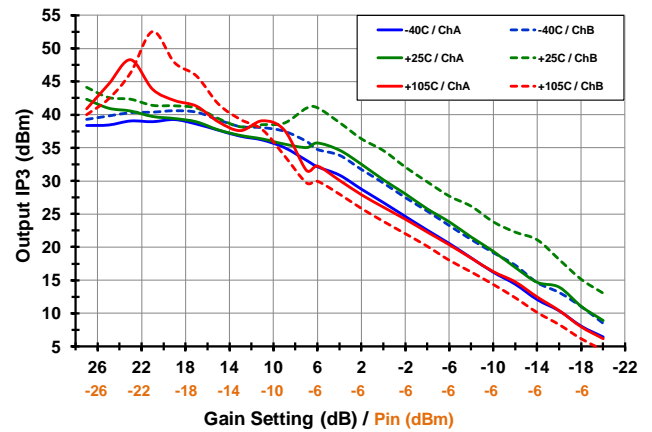
Gain [1.88 GHz]



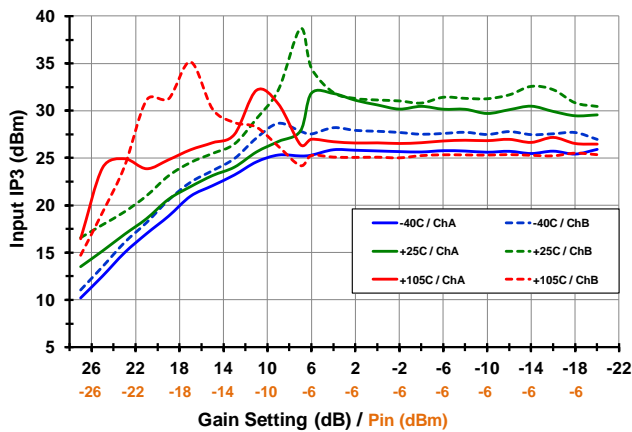
Output IP3 [1.71 GHz]



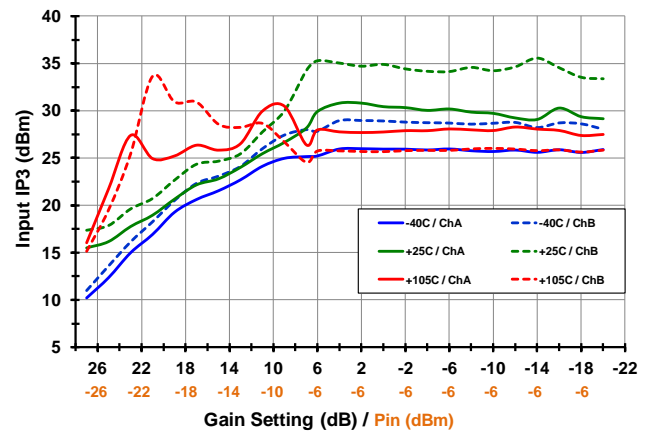
Output IP3 [1.88 GHz]



Input IP3 [1.71 GHz]



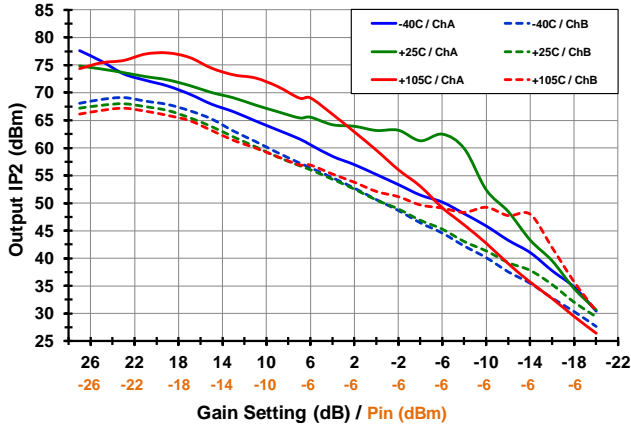
Input IP3 [1.88 GHz]



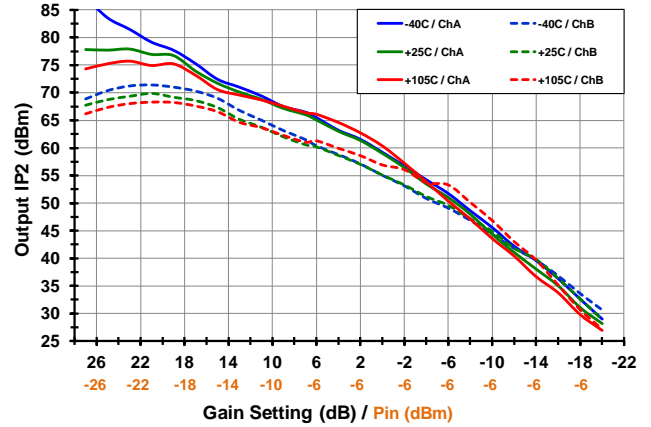


**TOCS SWEPT GAIN SETTING [STD MODE, IF = 276M, LS INJECTION] OIP2, IIP2, 2X2 (-21-)**

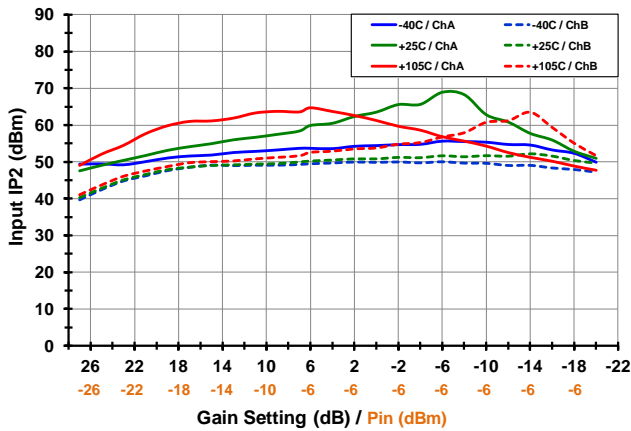
**Output IP2 [1.71 GHz]**



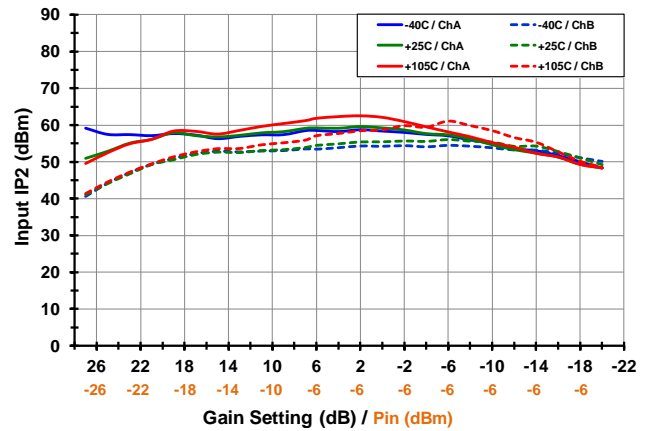
**Output IP2 [1.88 GHz]**



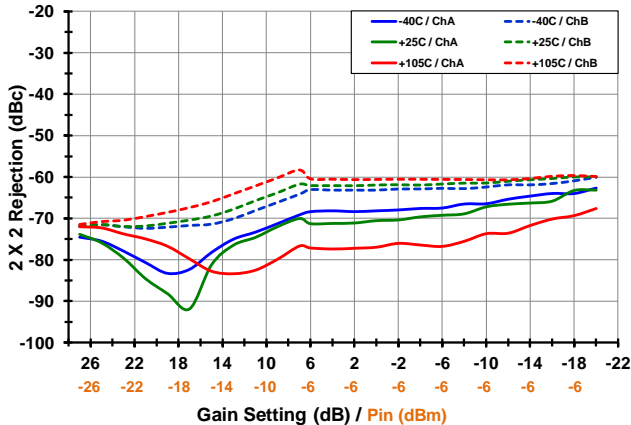
**Input IP2 [1.71 GHz]**



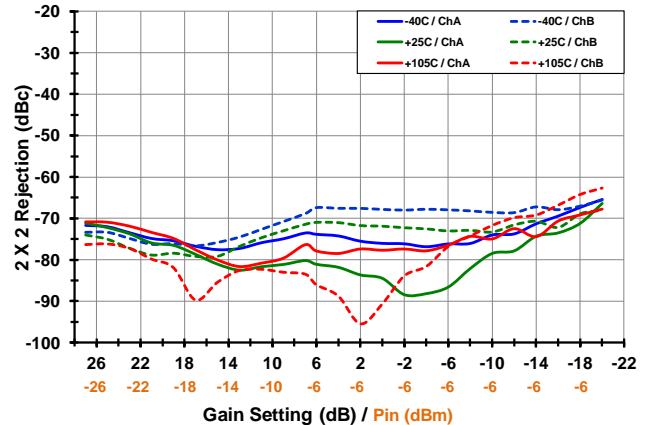
**Input IP2 [1.88 GHz]**



**2x2 Rejection [1.71 GHz]**

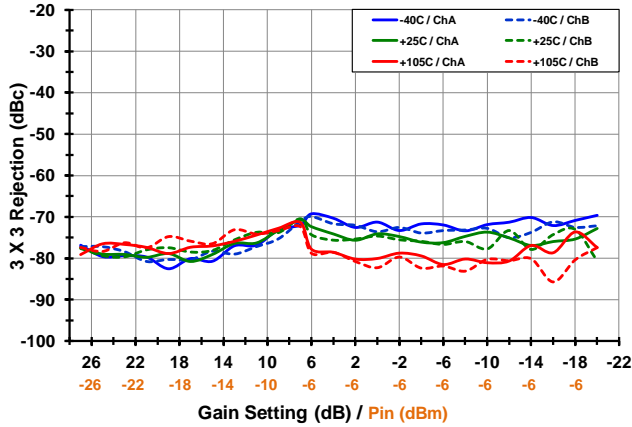


**2x2 Rejection [1.88 GHz]**

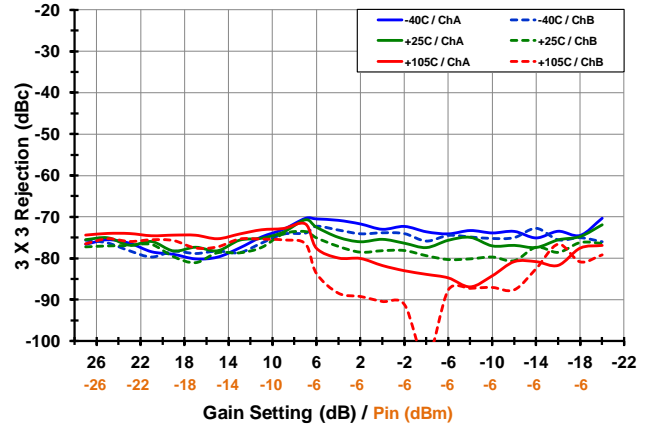


**TOCS SWEPT GAIN SETTING [STD MODE, IF = 276M, LS INJECTION] 3X3, LEAKAGE (-22-)**

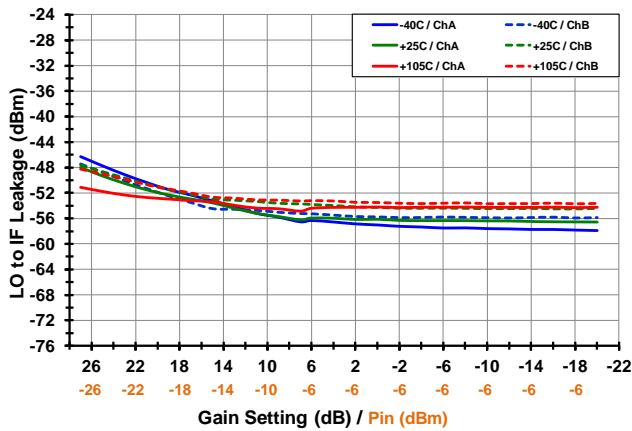
**3x3 Rejection [1.71 GHz]**



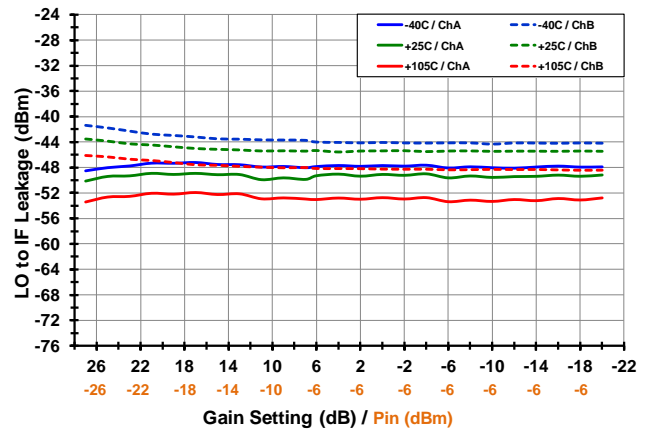
**3x3 Rejection [1.88 GHz]**



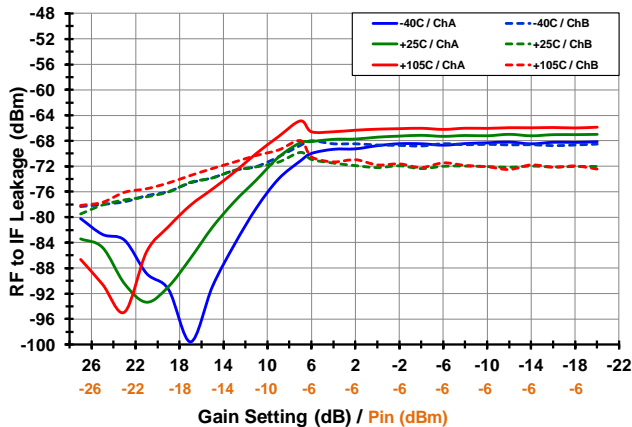
**LO to IF Leakage [low side inj, 1.88 GHz]**



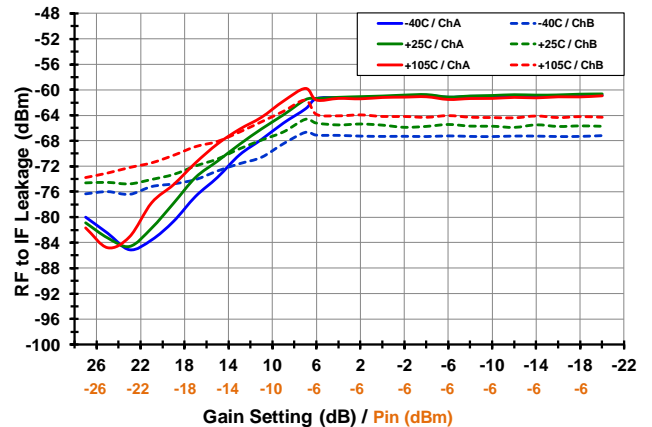
**LO to IF Leakage [high side inj., 1.88 GHz]**



**RF to IF Leakage [1.71 GHz]**



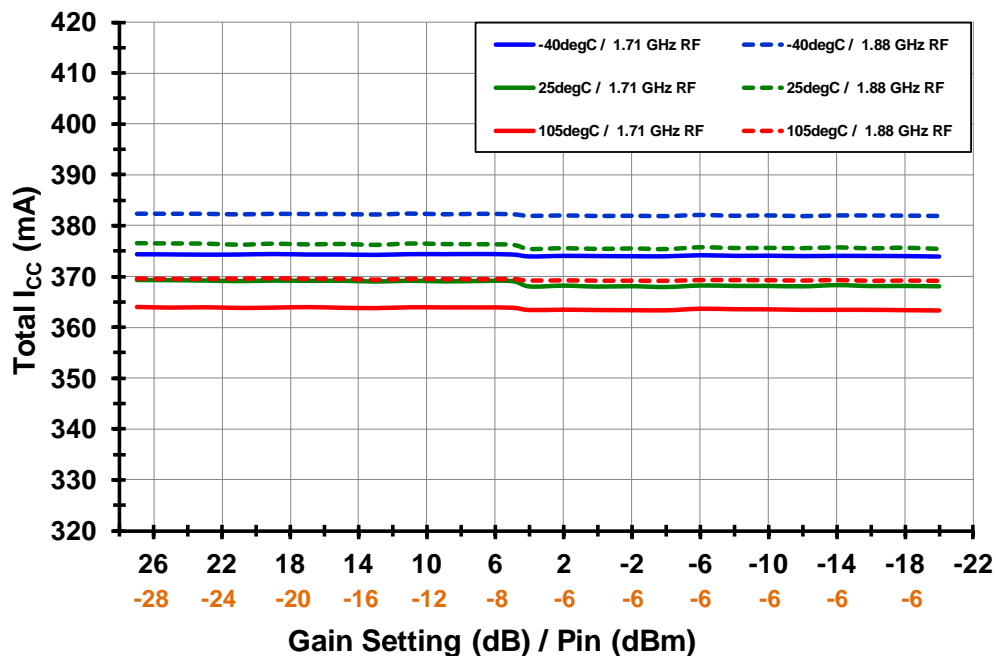
**RF to IF Leakage [1.88 GHz]**



**TYPICAL OPERATING CONDITIONS (LC MODE, 184MHz)**

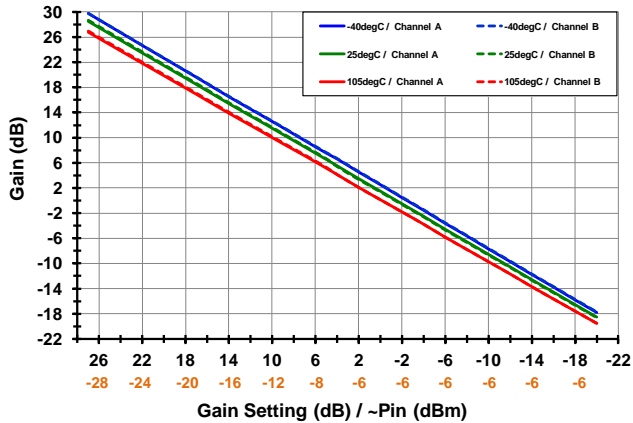
Unless otherwise noted, the following conditions apply to the 184MHz LC Mode Typ Ops Graphs:

- BOM2 Applications circuit for 100 ohm differential load with 184 MHz IF Center +/- 40 MHz BW into 2:1 Transformer (see page 51)
- Pout ~ +1 dBm
- P<sub>IN</sub> from -29 to -6 dBm (Gain Setting Adjusted to yield Pout ~ +1 dBm without exceeding -6 dBm P<sub>IN</sub>)
- Tone Spacing = 800 KHz
- Device configured in Standard Mode with Low Side Injection
- T<sub>CASE</sub> = 25C, V<sub>CC</sub> = 5.00 V, LO Power = 0 dBm
- RF Frequency: 1.88 GHz
- IF Frequency: 184 MHz
- Transformer Losses are de-embedded
- Input RF trace Losses are not de-embedded

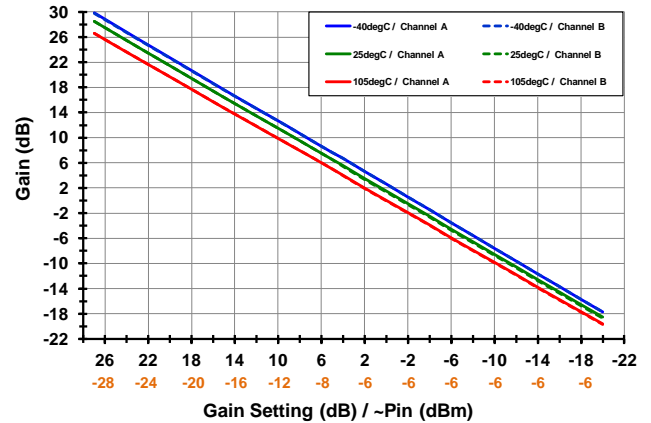


### TOCS SWEPT GAIN SETTING [LC MODE, IF = 184M, LS INJECTION] GAIN, OIP3, IIP3 (-23-)

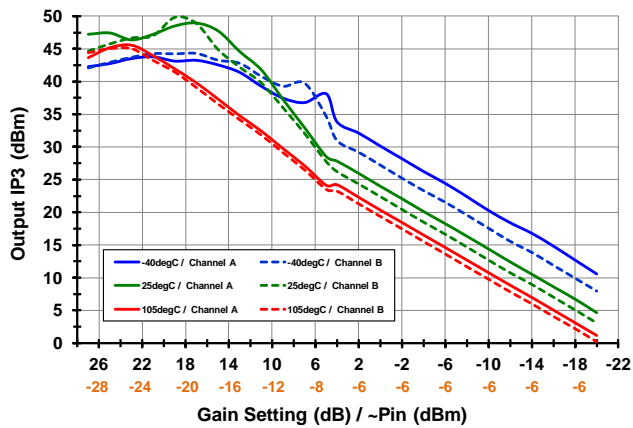
#### Gain [1.71 GHz]



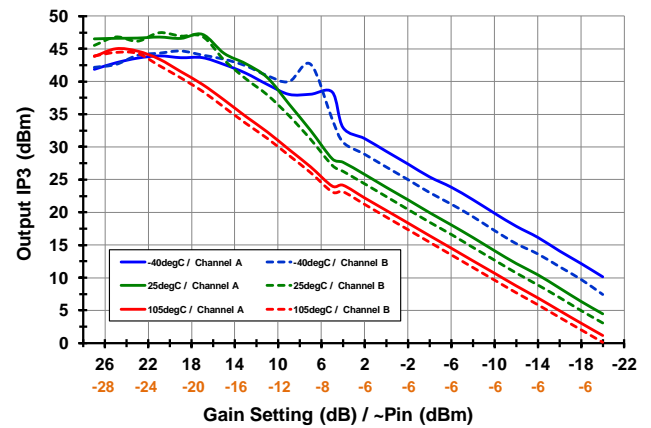
#### Gain [1.88 GHz]



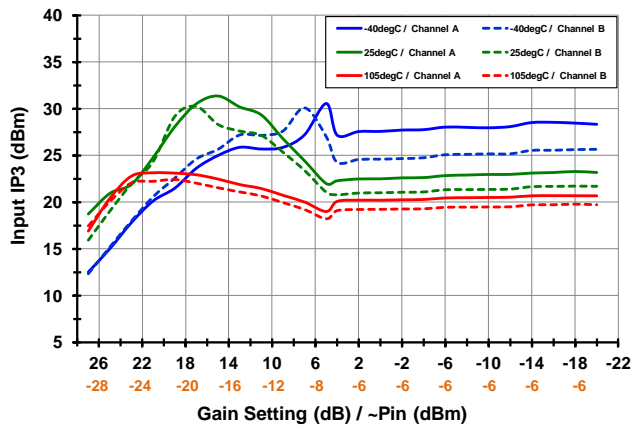
#### Output IP3 [1.71 GHz]



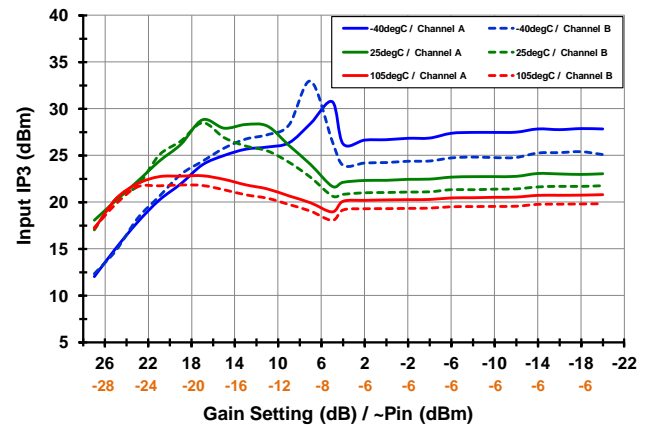
#### Output IP3 [1.88 GHz]



#### Input IP3 [1.71 GHz]

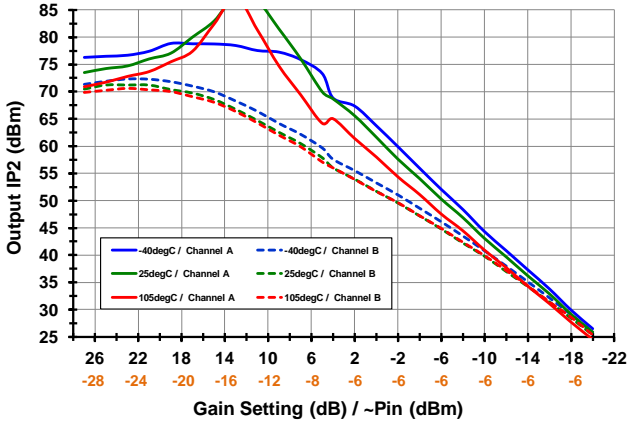


#### Input IP3 [1.88 GHz]

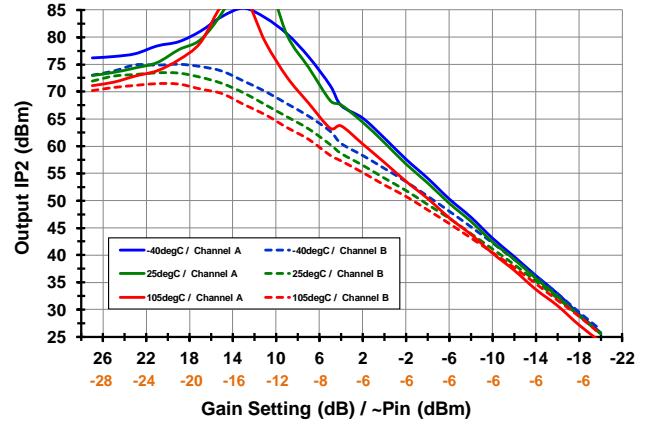


**TOCS SWEPT GAIN SETTING [LC MODE, IF = 184M, LS INJECTION] OIP2, IIP2, 2X2 (-24-)**

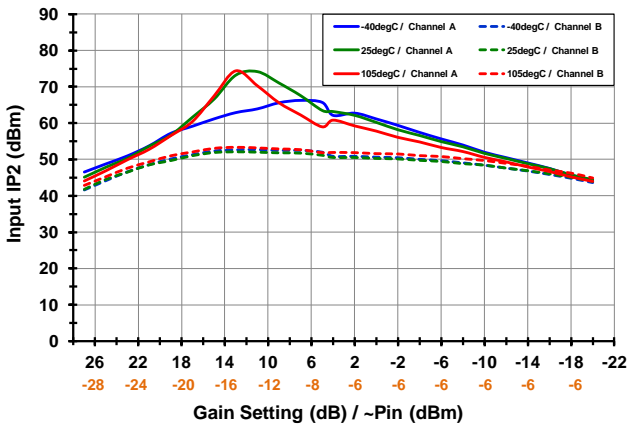
**Output IP2 [1.71 GHz]**



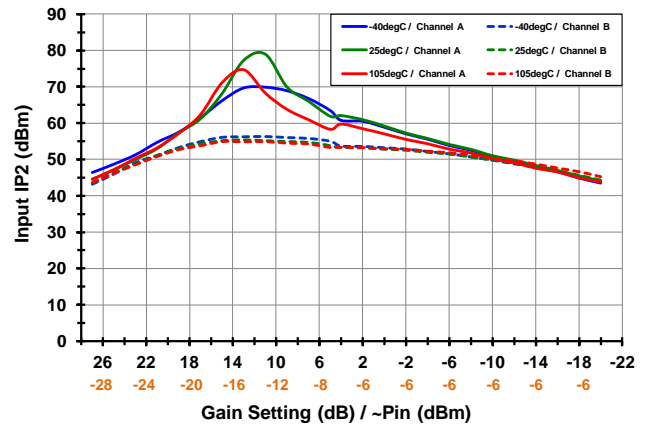
**Output IP2 [1.88 GHz]**



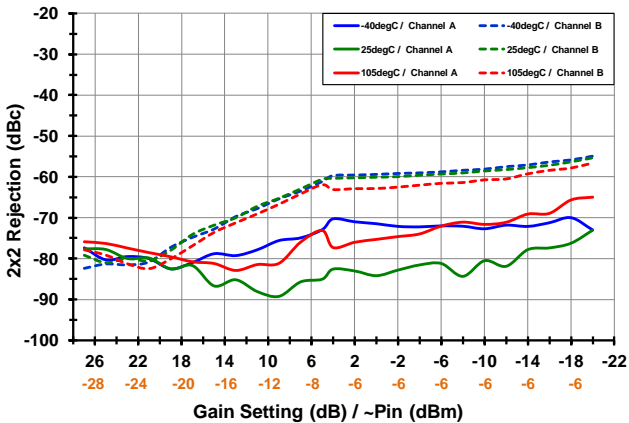
**Input IP2 [1.71 GHz]**



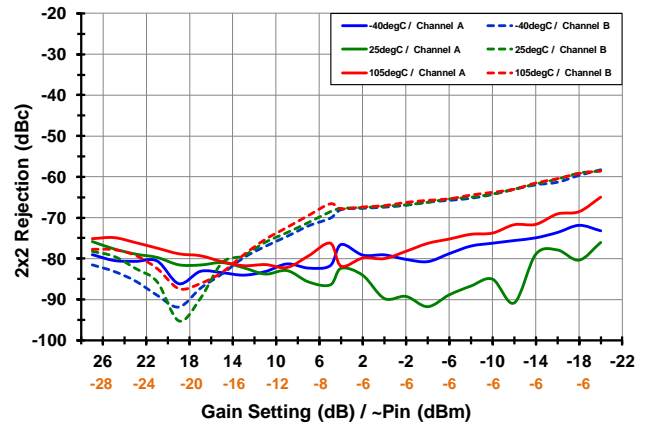
**Input IP2 [1.88 GHz]**



**2x2 Rejection [1.71 GHz]**

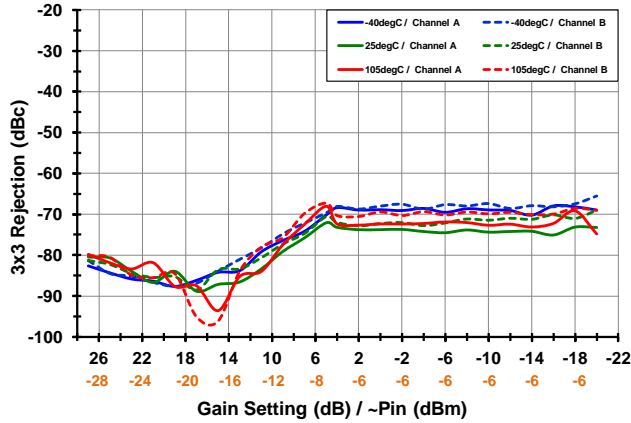


**2x2 Rejection [1.88 GHz]**

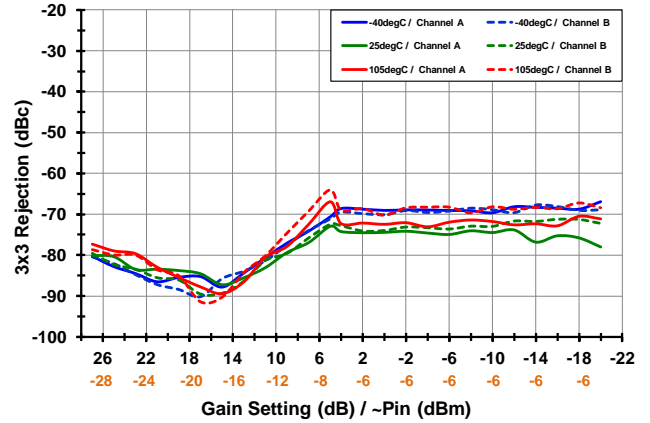


**TOCS SWEPT GAIN SETTING [LC MODE, IF = 184M, LS INJECTION] 3X3, LEAKAGE (-25-)**

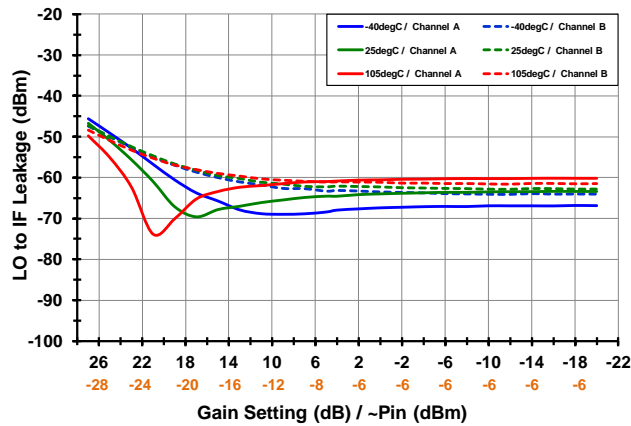
**3x3 Rejection [1.71 GHz]**



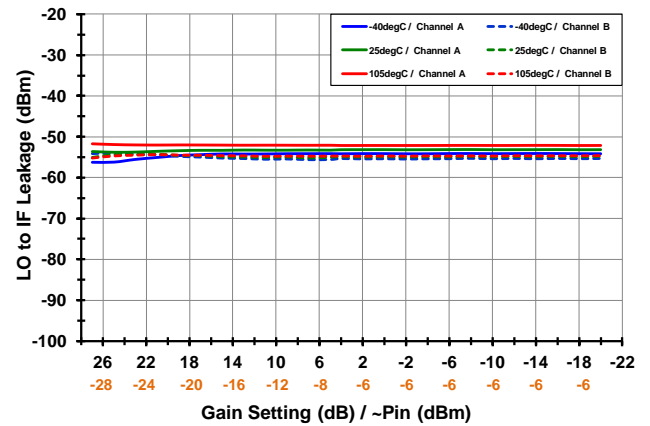
**3x3 Rejection [1.88 GHz]**



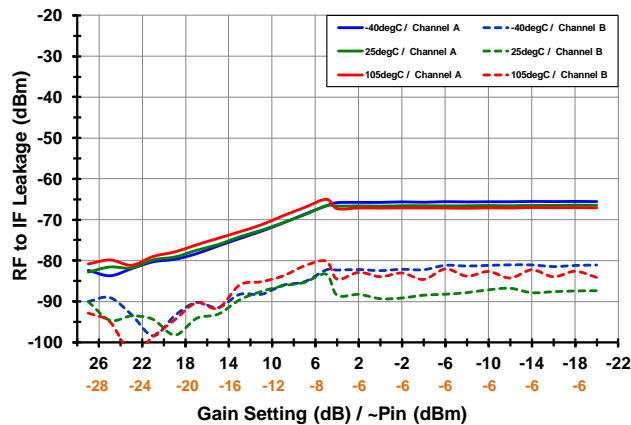
**LO to IF Leakage [low side inj, 1.88 GHz]**



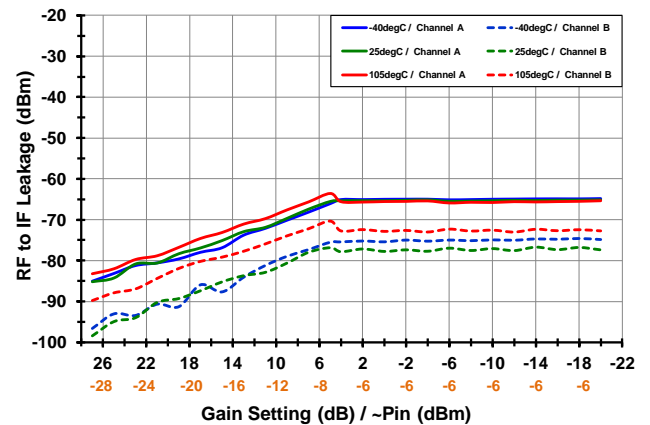
**LO to IF Leakage [high side inj., 1.88 GHz]**



**RF to IF Leakage [1.71 GHz]**



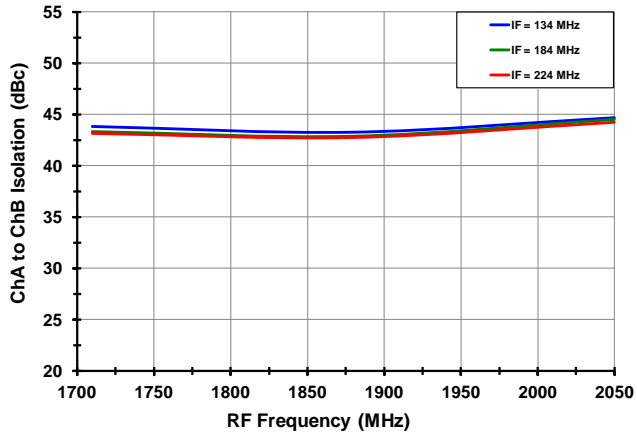
**RF to IF Leakage [1.88 GHz]**



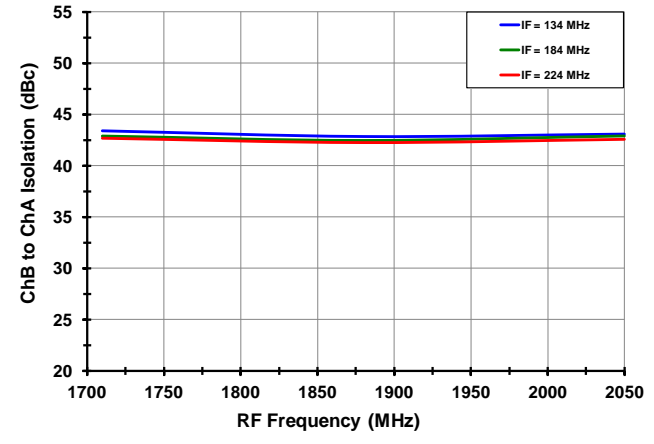


TOCS SWEPT GAIN SETTING [LC MODE, IF = 184M, LS INJECTION] CHA ISO (-26-)

Channel Isolation [ChA to ChB]

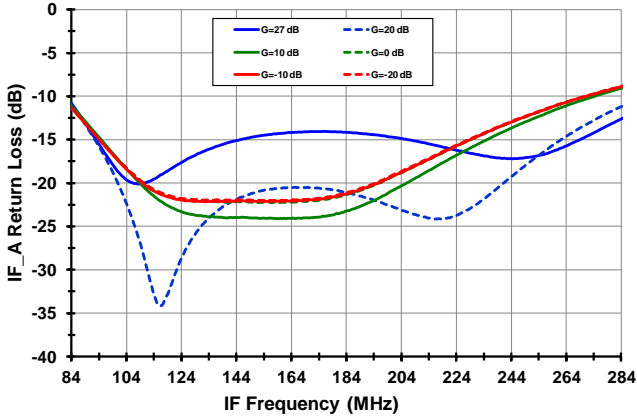


Channel Isolation [ChB to ChA]

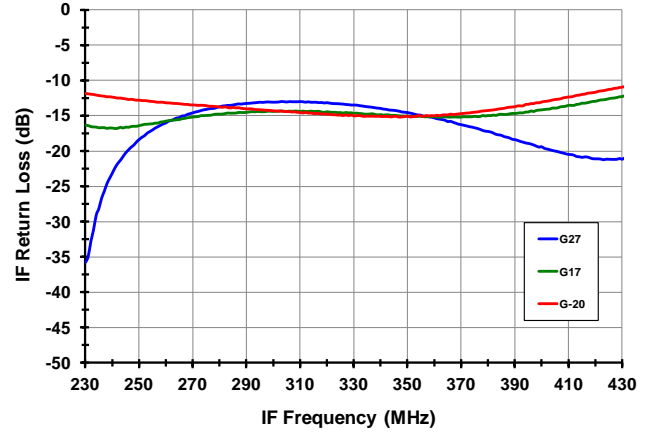


**TOCs RETURN LOSS [STD MODE] (-27-)**

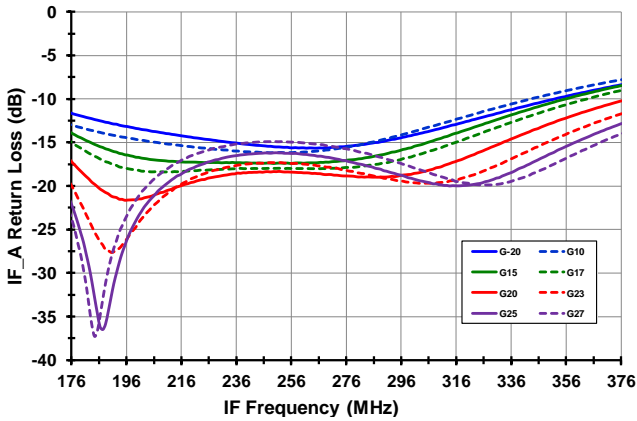
**IF\_A Output Return Loss 138M, 184M match**



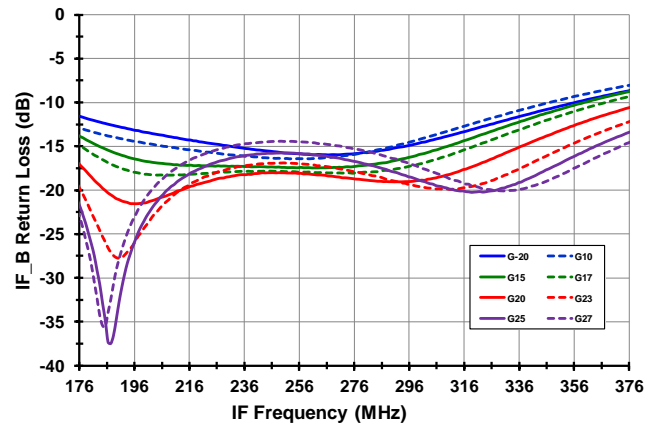
**IF\_A Output Return Loss 330MHz match**



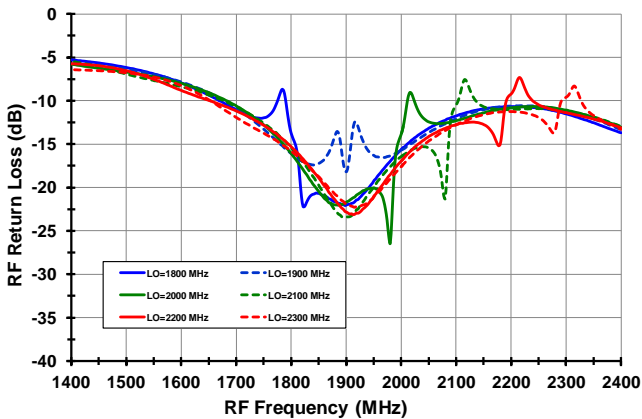
**IF\_A Return Loss 276MHz match**



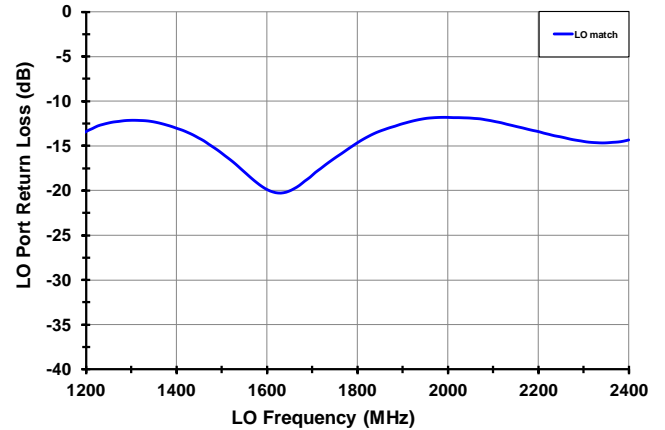
**IF\_B Return Loss 276MHz match**



**RF Input Return Loss**



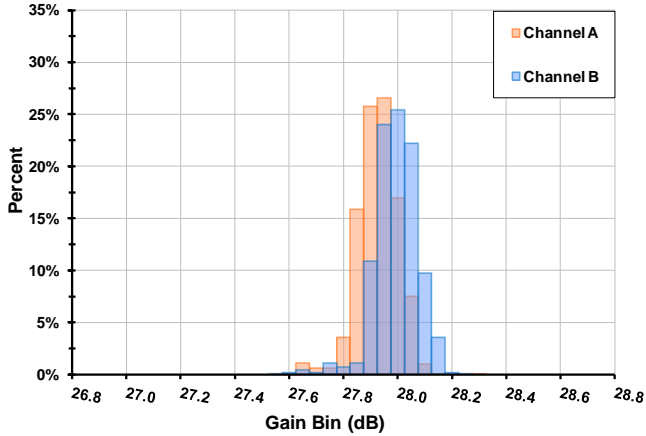
**LO Input Return Loss**



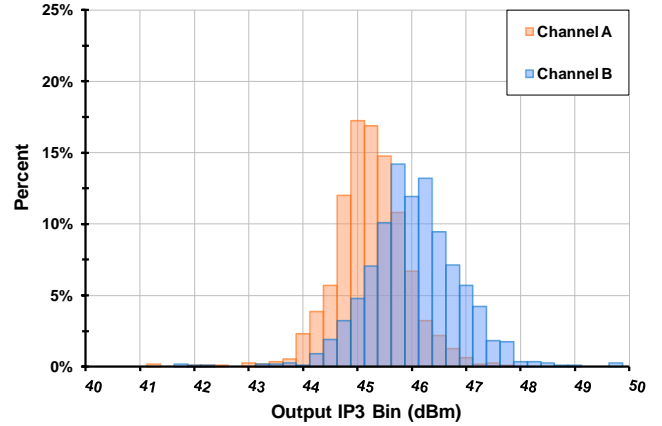


**TOCS HISTOGRAMS [N= 1090, T<sub>CASE</sub> = 25C] (-28-)**

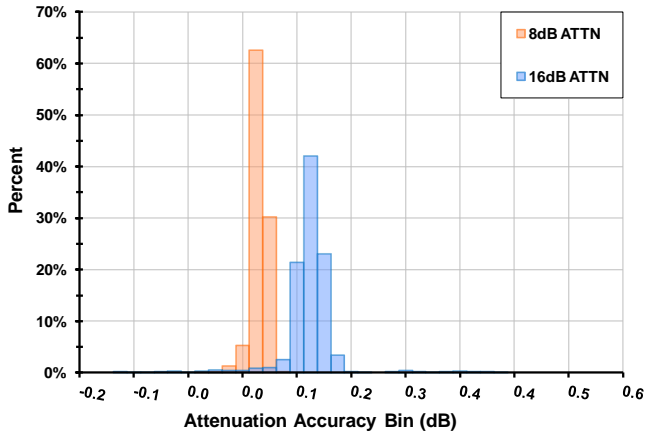
**Gain [RF = 1880M, LO =1696M, G<sub>MAX</sub>]**



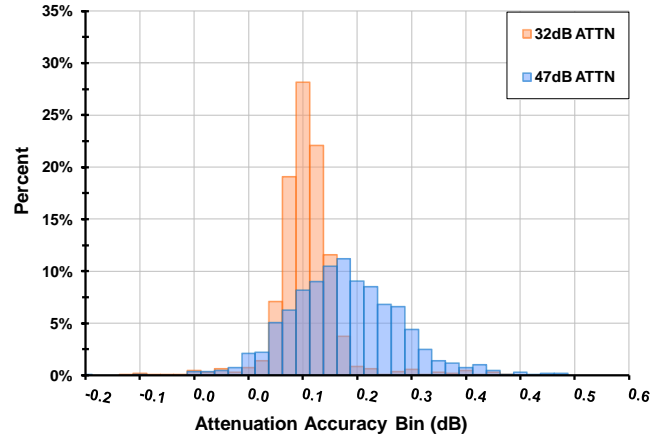
**Output IP3 [RF = 1880M, LO =1696M, G<sub>MAX</sub>]**



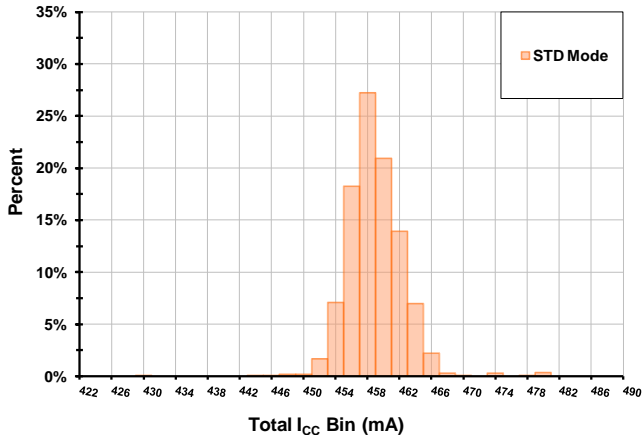
**ATTN Accuracy1 [RF = 1880M, LO =1696, ChA]**



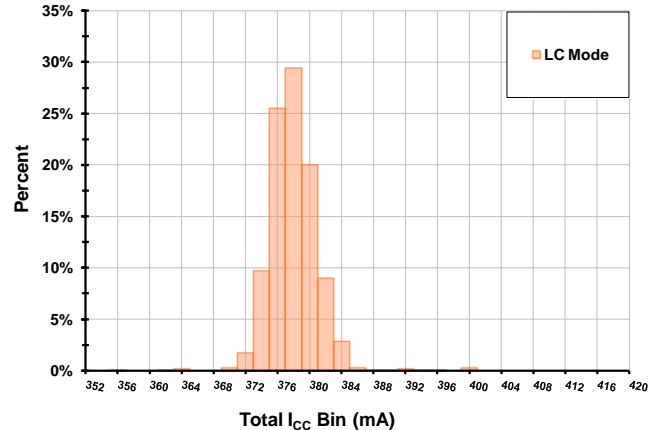
**ATTN Accuracy2 [RF = 1880M, LO =1696, ChA]**



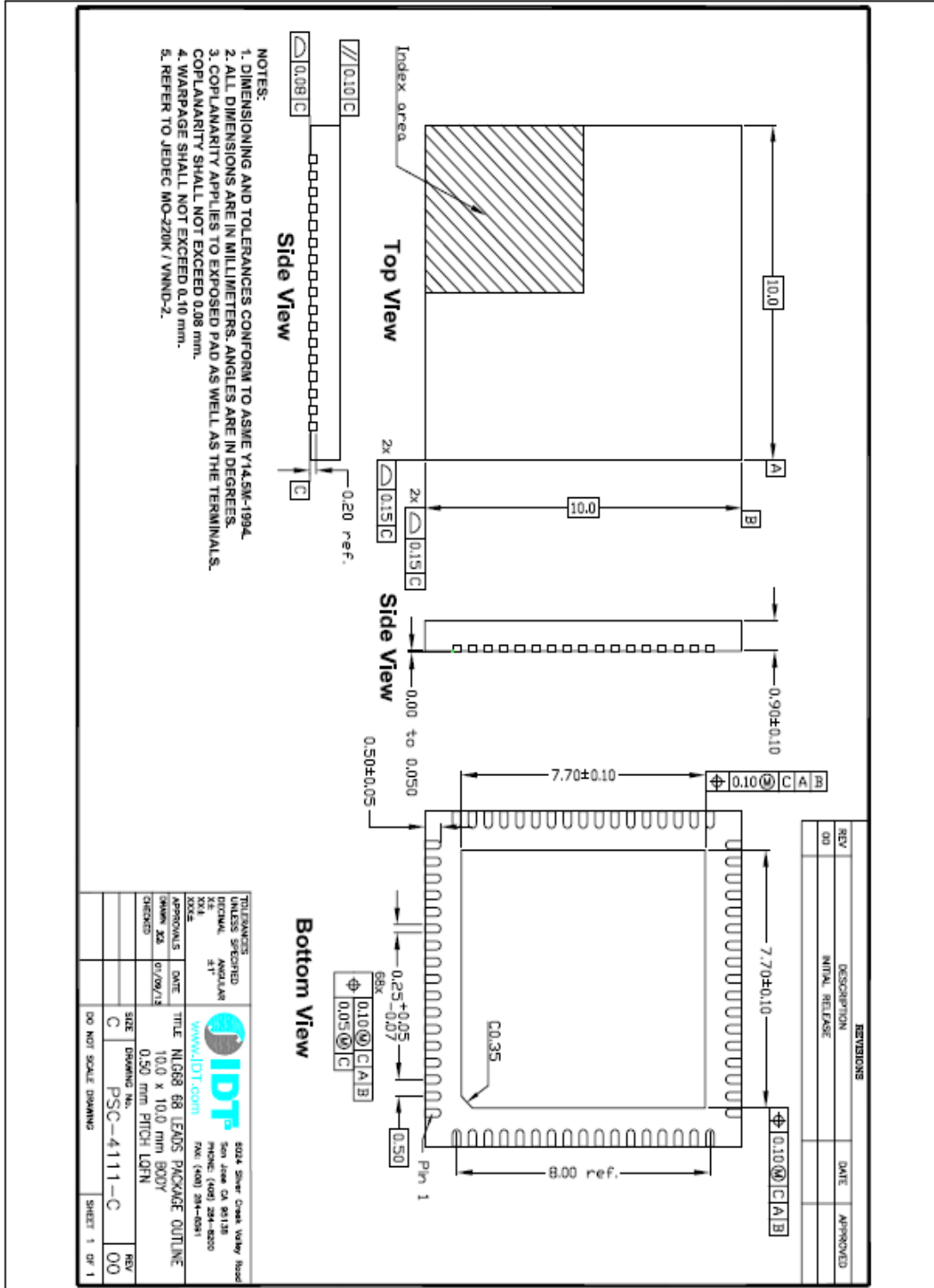
**I<sub>CC</sub> STD Mode [LO =1696M, V<sub>CC</sub> = 5.00 V]**



**I<sub>CC</sub> LC Mode [LO =1696M, V<sub>CC</sub> = 5.00 V]**

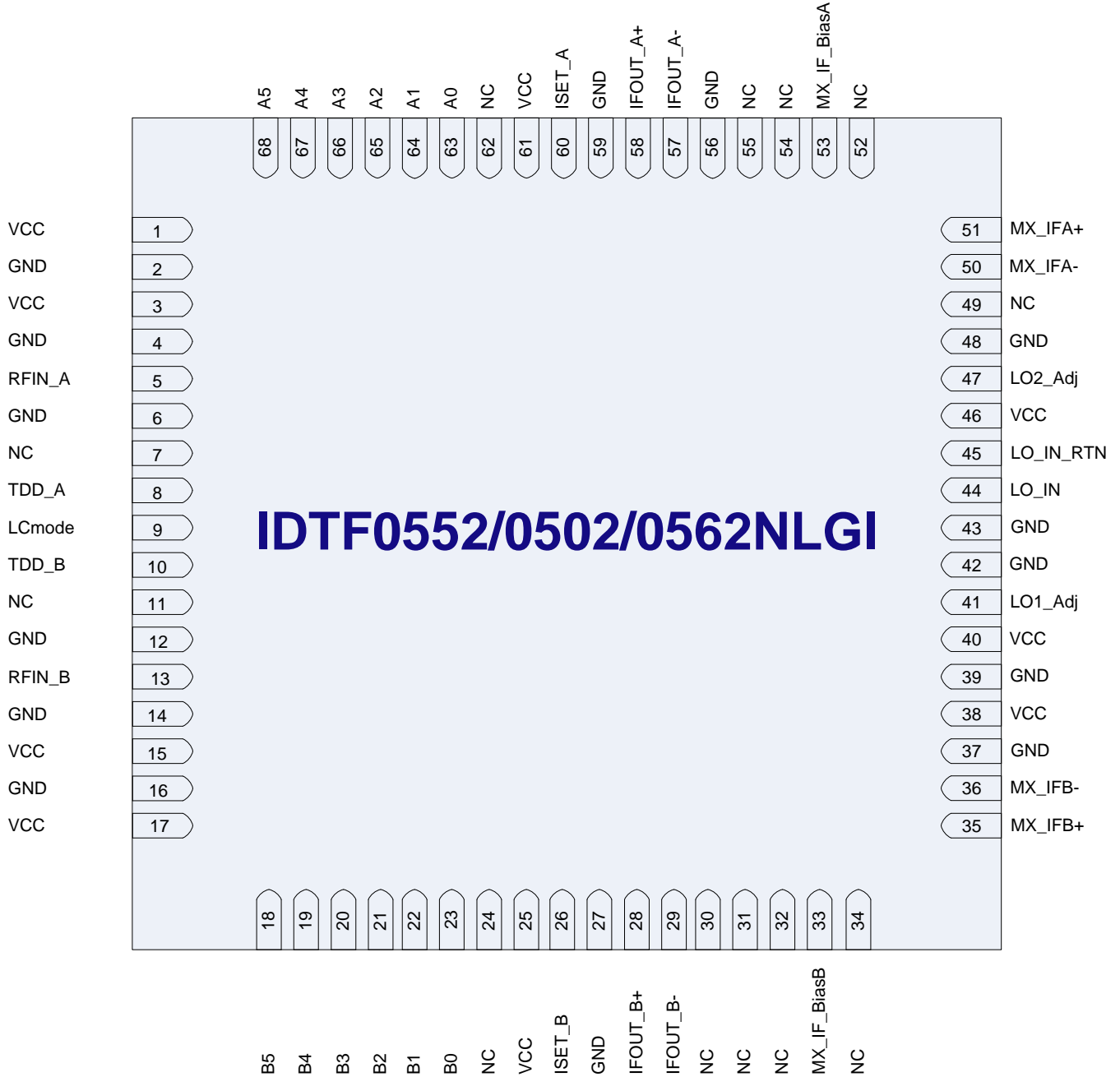


**PACKAGE DRAWING (10x10 68-PIN THIN QFN)**





**F0552 PINOUT**



**F0552 PIN DESCRIPTION TABLE**

Pin	Name	Function
1, 3, 15, 17, 25, 38, 40, 46, 61	VCC	Power Supply. Bypass to GND with capacitors shown in the Typical Application Circuit as close as possible to pin.
2, 4, 6, 12, 14, 16, 27, 37, 39, 42, 43, 48, 56, 59	GND	Ground these pins.
5	RFIN_A	Main Channel RF Input. Internally matched to 50Ω. DO NOT apply DC to these pins
7, 11, 24, 30, 31, 32, 34, 49, 52, 54, 55, 62	NC	No Connection. Not internally connected. OK to connect to VCC, OK to connect to GND
8	TDD_A	Standby control for Channel A. Includes an internal pull-up resistor so leave as NC for Standby mode. Set this pin to low or GND for normal operation.
9	LCmode	Low_Current Mode. Includes an internal pull-up resistor so leave as NC for LC mode. Set this pin to low or GND for STD mode.
10	TDD_B	Standby control for Channel B. Includes an internal pull-up resistor so leave as NC for Standby mode. Set this pin to low or GND for normal operation.
13	RFIN_B	Diversity Channel RF Input. Internally matched to 50Ω
18	B5	Parallel Gain Control Input – MSB. Includes an internal pull-up resistor.
19	B4	Parallel Gain Control Input. Includes an internal pull-up resistor.
20	B3	Parallel Gain Control Input. Includes an internal pull-up resistor.
21	B2	Parallel Gain Control Input. Includes an internal pull-up resistor.
22	B1	Parallel Gain Control Input. Includes an internal pull-up resistor.
23	B0	Parallel Gain Control Input – LSB (1 dB step). Includes an internal pull-up resistor.
26	ISET_B	ChB VGA Icc set: Recommended resistor value = 3.83K
28	IFOUT_B+	Channel B Differential Output +. Pull up to Vcc through an inductor
29	IFOUT_B-	Channel B Differential Output -. Pull up to Vcc through an inductor
33	MX_IF_BiasB	Connect the specified resistor for either Standard mode (41ohm) or LC mode (62ohm) from this pin to ground to set the bias for the Diversity IF amplifier. This is NOT a current set resistor.
35	MX_IFB+	Diversity Mixer Differential IF (+) Output. Connect a pullup inductor from this pin to VCC.
36	MX_IFB-	Diversity Mixer Differential IF (-) Output. Connect a pullup inductor from this pin to VCC.

**F0552 PIN DESCRIPTION TABLE (CONTINUED)**

41	LO1_ADJ	Connect the specified resistor for either Standard mode (220ohm) or LC mode (240ohm) from this pin to ground to set the LO common buffer Icc.
44	LO_IN	Local Oscillator Input. Connect the LO to this port through the recommended coupling capacitor.
45	LO_IN_RTN	Transformer ground return. Ground this pin.
47	LO2_ADJ	Connect the specified resistor for either Standard mode (1.3K) or LC mode (2.15K) from this pin to ground to set the LO drive buffers Icc.
50	MX_IFA-	Diversity Mixer Differential IF (-) Output. Connect a pullup inductor from this pin to VCC.
51	MX_IFA+	Diversity Mixer Differential IF (+) Output. Connect a pullup inductor from this pin to VCC.
53	MX_IF_BiasA	Connect the specified resistor for either Standard mode (41ohm) or LC mode (62ohm) from this pin to ground to set the bias for the Diversity IF amplifier. This is NOT a current set resistor.
57	IFOUT_A-	Channel A Differential Output -. Pull up to Vcc through an inductor
58	IFOUT_A+	Channel A Differential Output +. Pull up to Vcc through an inductor
60	ASET_A	ChA VGA Icc set: Recommended resistor value = 3.83K
63	A0	Parallel Gain Control Input – LSB (1dB step). Includes an internal pull-up resistor.
64	A1	Parallel Gain Control Input. Includes an internal pull-up resistor.
65	A2	Parallel Gain Control Input. Includes an internal pull-up resistor.
66	A3	Parallel Gain Control Input. Includes an internal pull-up resistor.
67	A4	Parallel Gain Control Input. Includes an internal pull-up resistor.
68	A5	Parallel Gain Control Input – MSB. Includes an internal pull-up resistor.
	— EP	Exposed Pad. Internally connected to GND. Solder this exposed pad to a PCB pad that uses multiple ground vias to provide heat transfer out of the device into the PCB ground planes. These multiple via grounds are also required to achieve the noted RF performance.



**F0552 DIGITAL PIN VOLTAGE & RESISTANCE VALUES**

The following table provides open-circuit DC voltage and resistance values referenced to ground for each of the control pins listed.

Pin	Name	DC voltage (volts)	Pull-up Resistance (ohms)
8	TDD_A	5	50k
9	LC_MODE	5	50k
10	TDD_B	5	50k
18 – 23	B0-B5	5	50k
63 - 68	A0-A5	5	50k



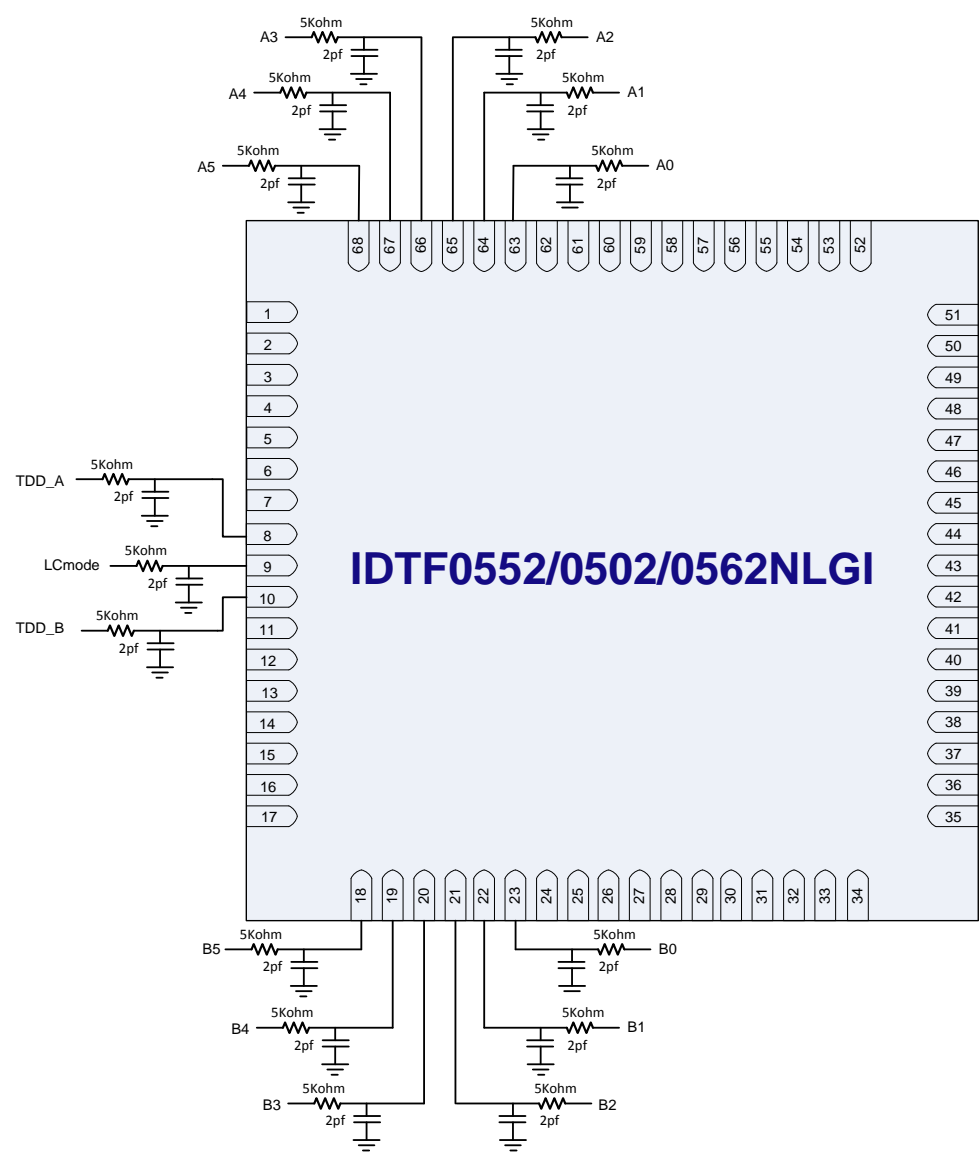
**APPLICATIONS INFORMATION**

**Power Supplies**

A common VCC power supply should be used for all pins requiring DC power. All supply pins should be bypassed with external capacitors to minimize noise and fast transients. Supply noise can degrade noise figure and fast transients can trigger ESD clamps and cause them to fail. Supply voltage change or transients should have a slew rate smaller than 1V/20uS. In addition, all control pins should remain at 0V (+/-0.3V) while the supply voltage ramps or while it returns to zero.

**Control Pin Interface**

If control signal integrity is a concern and clean signals cannot be guaranteed due to overshoot, undershoot, ringing, etc., provisions for an R-C circuit at the input of each control and data pin is recommended. This applies to pins 8, 9, 10, 18 - 23, and 63 - 68 as shown below.

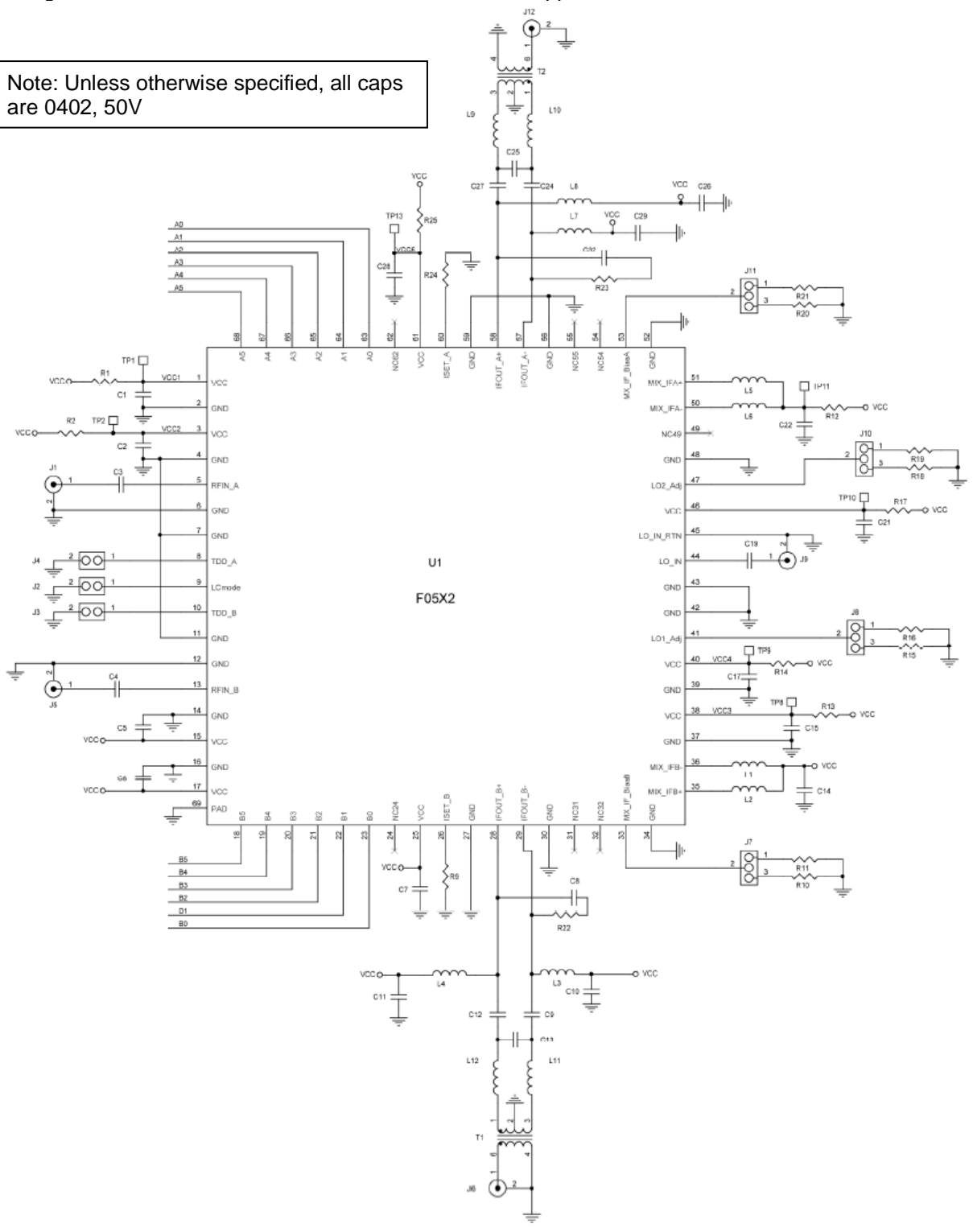




**EVKIT & TYPICAL APPLICATION SCHEMATIC**

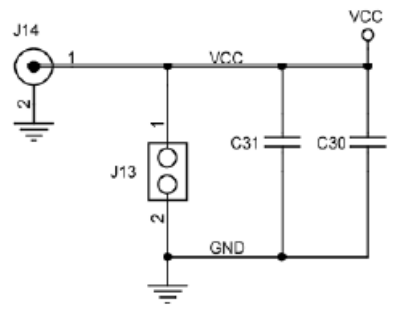
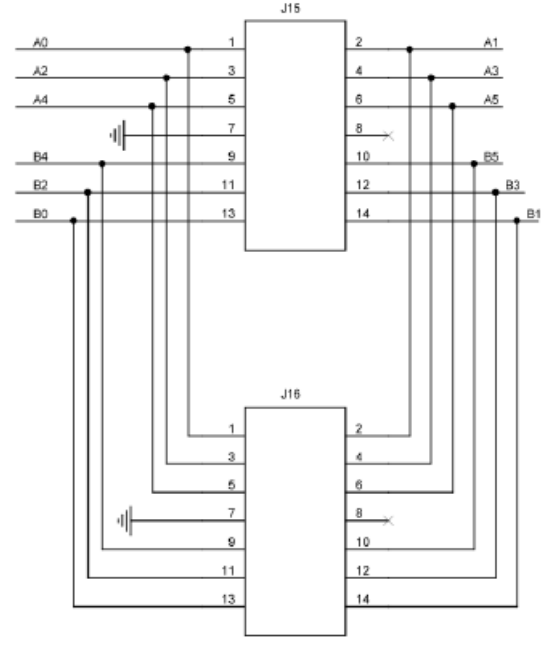
The following schematic describes the recommended EVkit and applications circuit.

Note: Unless otherwise specified, all caps are 0402, 50V

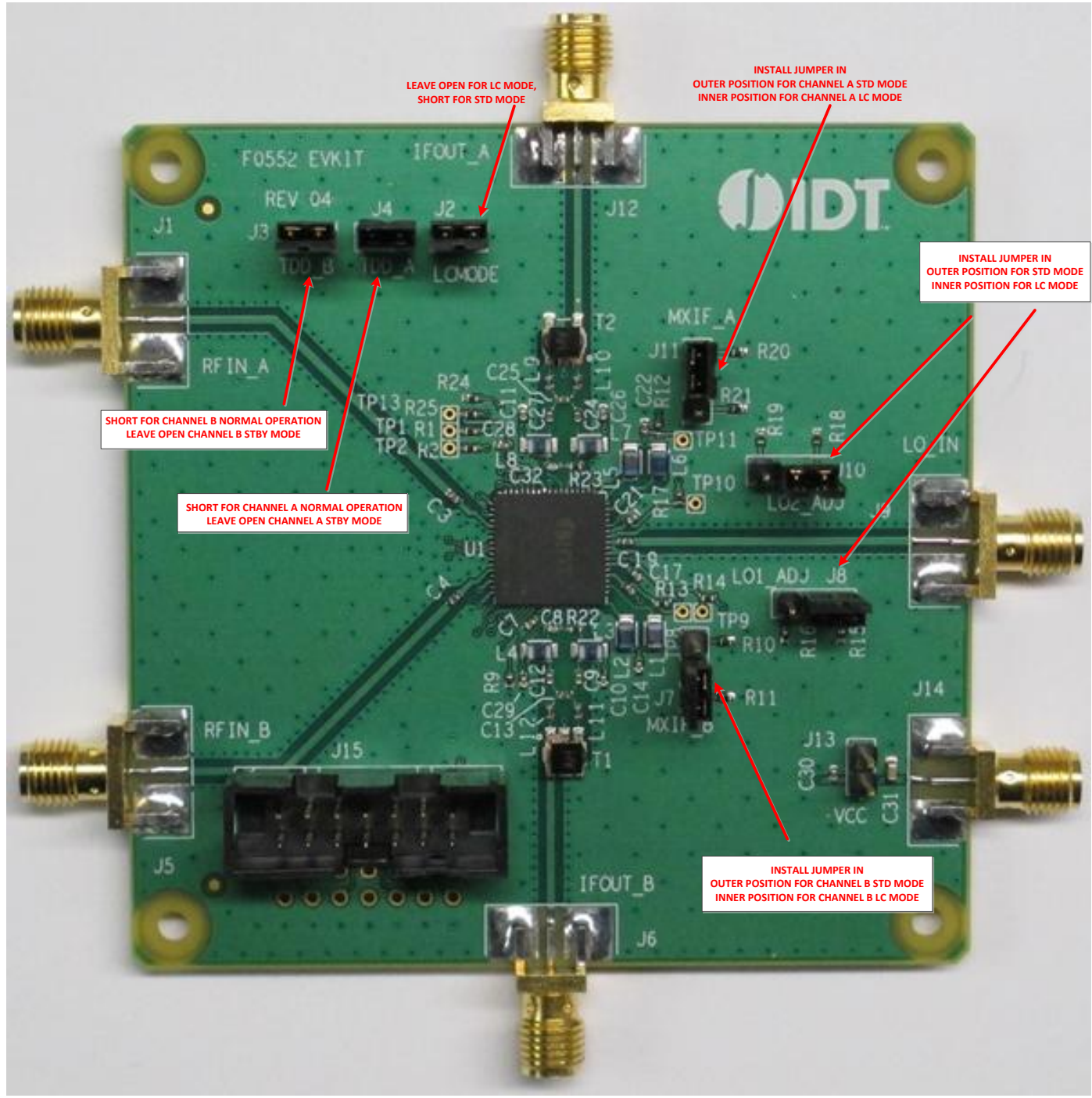




**SCHEMATIC CONTINUED FROM PREVIOUS PAGE**



**EVKIT PICTURE**





**Sampling IF Receiver**

**1710MHz to 2050MHz**

**F0552 BOM 1 & 2**

Two EV Kit BOMs are included: BOM1 supports the 4:1 output transformation from 200ohms to 50ohms used for production test and BOM2 supports the 2:1 output transformation from 200ohms to 100ohms used to generate the typical operating curve graphs.

**BOM1** includes components for 4:1 output transformation supporting production test (IF center frequency 184MHz)

F0552 BOM For 4:1 IF=184Mhz for Correlation

5/24/2013

Item #	Value	Size	Desc	Mfr. Part #	Mfr.	Supplier Part #	Supplier	Part Reference	Qty
1	18pF	0402	CAP CER 18pF 50V 5% COG 0402	GRM1555C1H180JZ010	MURATA	490-1281-1-ND	Digikey	C3,4	2
2	39pF	0402	CAP CER 39pF 50V 5% COG 0402	GRM1555C1H390JZ010	MURATA	490-1286-1-ND	Digikey	C19	1
3	1000pF	0402	CAP CER 1000PF 50V COG 0402	GRM1555C1H102JA010	MURATA	490-3244-1-ND	Digikey	C9,12,24,27	4
4	10nF	0402	CAP CER 10000PF 16V 10% X7R 0402	GRM155R71C103KA010	MURATA	490-1313-1-ND	Digikey	C1,2,5,6,7,10,11,14,15,17,21,22,26,28,29,30	16
5	10uF	0603	CAP CER 10UF 6.3V X5R 0603	GRM188R60J106ME470	MURATA	490-3896-1-ND	Digikey	C31	1
6	220	0402	RES 220 OHM 1/10W 1% 0402 SMD	ERJ-2RKF2200X	Panasonic	P220LCT-ND	Digikey	R15	1
7	240	0402	RES 240 OHM 1/10W 1% 0402 SMD	ERJ-2RKF2400X	Panasonic	P240LCT-ND	Digikey	R16	1
8	1.3K	0402	RES 1.30K OHM 1/10W 1% 0402 SMD	ERJ-2RKF1301X	Panasonic	P1.30KLCT-ND	Digikey	R18	1
9	2.15k	0402	RES 2.15K OHM 1/10W 1% 0402 SMD	ERJ-2RKF2151X	Panasonic	P2.15KLCT-ND	Digikey	R19	1
10	62	0402	RES 62.0 OHM 1/10W 1% 0402 SMD	ERJ-2RKF62R0X	Panasonic	P62.0LCT-ND	Digikey	R10,21	2
11	3.83K	0402	RES 3.83K OHM 1/10W 1% 0402 SMD	ERJ-2RKF3831X	Panasonic	P3.83KLCT-ND	Digikey	R9,24	2
12	40.2	0402	RES 40.2 OHM 1/10W 1% 0402 SMD	ERJ-2RKF40R2X	Panasonic	P40.2LCT-ND	Digikey	R11,20	2
13	0	0402	RES 0.0 OHM 1/10W 0402 SMD	ERJ-2GE0R00X	Panasonic	P0.0JCT-ND	Digikey	R1,2,12,13,14,17,25, L9	11
14	SMA_END_LAUNCH	.062	SMA_END_LAUNCH (small)	142-0711-821	Emerson Johnson	530-142-0711-821	Mouser	J6,12,14	3
15	SMA_END_LAUNCH	.062	SMA_END_LAUNCH (Big)	142-0701-851	Emerson Johnson	530-142-0701-851	Mouser	J1,5,9	3
16	Header 14 Pin	TH 14	CONN HEADER VERT SGL 14POS GOLD	N2514-6002-RB	3M	MHC14K-ND	Digikey	J15	1
17	Header 2 Pin	TH 2	CONN HEADER VERT SGL 2POS GOLD	961102-6404-AR	3M	3M9447-ND	Digikey	J2,3,4,13	4
18	Header 3 Pin	TH 3	CONN HEADER VERT SGL 3POS GOLD	961103-6404-AR	3M	3M9448-ND	Digikey	J7,8,10,11	4
19	1:4 Balun	SM-22	4:1 Center Tap Balun	TC4-1WG2+	Mini Circuits	TC4-1WG2+	Mini Circuits	T1,2	2
20	390 nH	0805	0805CS (2012) Ceramic Chip Inductor	0805CS-391XJLB	COILCRAFT	0805CS-391XJLB	COILCRAFT	U1	8
21	F0552 / Socket	TQFN-68	Sampling IF receiver / Socket	F0552	IDT	F0552	IDT	L1-8	1
22	Not populated							C13,25	
23	PCB	Rev 02	PCB Rev 02	F0552 EV Kit Rev 02			SBC		1
24	BOM	Rev 04	F0552 BOM Rev 04						
Total									72

**BOM2** includes components for 2:1 output transformation used for TOCs (IF center frequency 184MHz +/- 40MHz)

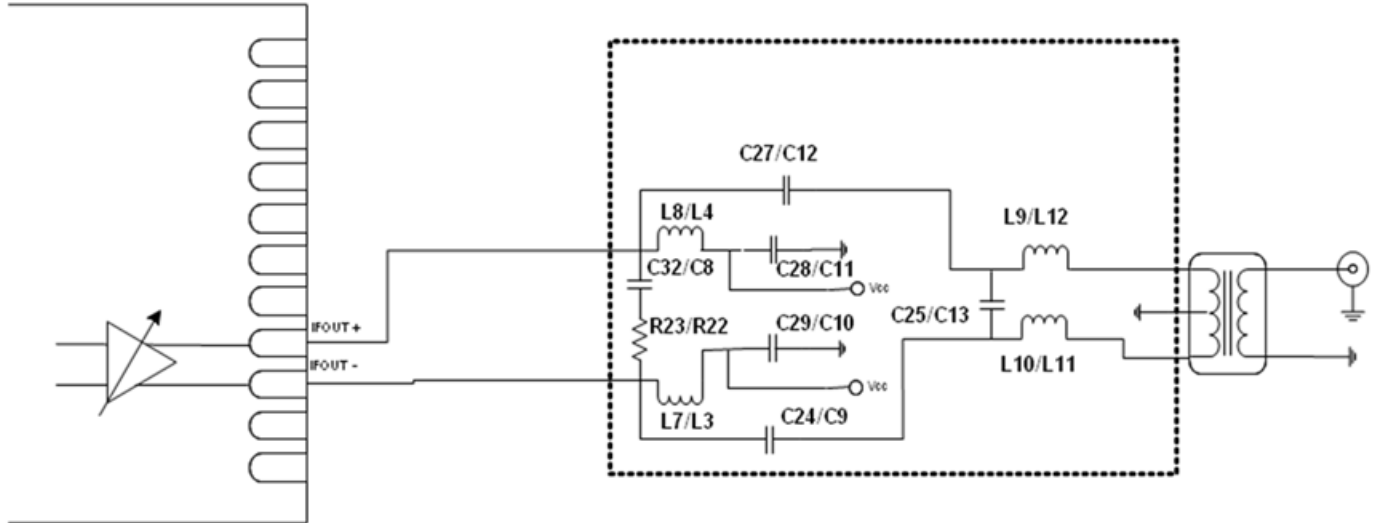
F0552 BOM For 2:1 IF=184Mhz

6/10/2013

Item #	Value	Size	Desc	Mfr. Part #	Mfr.	Supplier Part #	Supplier	Part Reference	Qty
1	18pF	0402	CAP CER 18pF 50V 5% COG 0402	GRM1555C1H180JZ010	MURATA	490-1281-1-ND	Digikey	C3,4	2
2	39pF	0402	CAP CER 39pF 50V 5% COG 0402	GRM1555C1H390JZ010	MURATA	490-1286-1-ND	Digikey	C19	1
3	20pF	0402	CAP CER 20pF 50V COG 0402	GRM1555C1H200JZ010	MURATA	490-1282-1-ND	Digikey	C9,12,24,27	4
4	3pF	0402	CAP CER 3pF 50V COG 0402	GRM1555C1H3R0CZ010	MURATA	490-3205-1-ND	Digikey	C13,25	2
5	10nF	0402	CAP CER 10000PF 16V 10% X7R 0402	GRM155R71C103KA010	MURATA	490-1313-1-ND	Digikey	C1,2,5,6,7,10,11,14,15,15,	16
6	10uF	0603	CAP CER 10UF 6.3V X5R 0603	GRM188R60J106ME470	MURATA	490-3896-1-ND	Digikey	C31	1
7	220	0402	RES 220 OHM 1/10W 1% 0402 SMD	ERJ-2RKF2200X	Panasonic	P220LCT-ND	Digikey	R15	1
8	240	0402	RES 240 OHM 1/10W 1% 0402 SMD	ERJ-2RKF2400X	Panasonic	P240LCT-ND	Digikey	R16	1
9	1.3K	0402	RES 1.30K OHM 1/10W 1% 0402 SMD	ERJ-2RKF1301X	Panasonic	P1.30KLCT-ND	Digikey	R18	1
10	2.15k	0402	RES 2.15K OHM 1/10W 1% 0402 SMD	ERJ-2RKF2151X	Panasonic	P2.15KLCT-ND	Digikey	R19	1
11	62	0402	RES 62.0 OHM 1/10W 1% 0402 SMD	ERJ-2RKF62R0X	Panasonic	P62.0LCT-ND	Digikey	R10,21	2
12	3.83K	0402	RES 3.83K OHM 1/10W 1% 0402 SMD	ERJ-2RKF3831X	Panasonic	P3.83KLCT-ND	Digikey	R9,24	2
13	40.2	0402	RES 40.2 OHM 1/10W 1% 0402 SMD	ERJ-2RKF40R2X	Panasonic	P40.2LCT-ND	Digikey	R11,20	2
14	0	0402	RES 0.0 OHM 1/10W 0402 SMD	ERJ-2GE0R00X	Panasonic	P0.0JCT-ND	Digikey	R1,2,12,13,14,17,25	7
15	SMA_END_LAUNCH	.062	SMA_END_LAUNCH (small)	142-0711-821	Emerson Johnson	530-142-0711-821	Mouser	J6,12,14	3
16	SMA_END_LAUNCH	.062	SMA_END_LAUNCH (Big)	142-0701-851	Emerson Johnson	530-142-0701-851	Mouser	J1,5,9	3
17	Header 14 Pin	TH 14	CONN HEADER VERT SGL 14POS GOLD	N2514-6002-RB	3M	MHC14K-ND	Digikey	J15	1
18	Header 2 Pin	TH 2	CONN HEADER VERT SGL 2POS GOLD	961102-6404-AR	3M	3M9447-ND	Digikey	J2,3,4,13	4
19	Header 3 Pin	TH 3	CONN HEADER VERT SGL 3POS GOLD	961103-6404-AR	3M	3M9448-ND	Digikey	J7,8,10,11	4
20	2:1 Balun	SM-22	2:1 Center Tap Balun	TC2-72T+	Mini Circuits	TC2-72T+	Mini Circuits	T1,2	2
21	390 nH	0805	0805CS (2012) Ceramic Chip Inductor	0805CS-391XJLB	COILCRAFT	0805CS-391XJLB	COILCRAFT	L1,2,5,6	4
22	150nH	0805	0805CS (2012) Ceramic Chip Inductor	0805CS-151XJLB	COILCRAFT	0805CS-151XJLB	COILCRAFT	L3,4,7,8	4
23	30nH	0402	0402CS Ceramic Chip Inductor	0402CS-30NXJLU	COILCRAFT	0402CS-30NXJLU	COILCRAFT	L9-12	4
24	F0552	TQFN-68	Sampling IF receiver	F0552	IDT	F0552	IDT	U1	1
25	PCB	Rev 02	PCB Rev 02	F0552 EV Kit Rev 02			SBC		1
26	BOM	Rev 04	F0552 BOM Rev 04						
Total									74

For the complete list of matching values for IF frequencies other than 184MHz, see the following table.

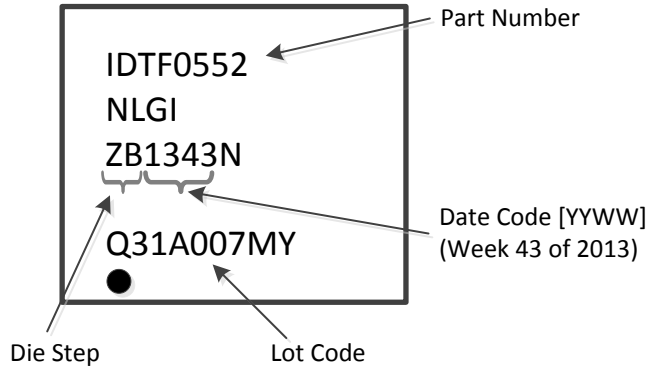
**IF BIAS AND OUTPUT MATCHING CIRCUIT & BOM FOR VARIOUS IFs**



**IF NETWORK BOM FOR DIFFERENT FREQUENCIES**

Item #	Part Reference	Value				Unit
		IF frequency				
		80 (60-100)	138, 184 (98-240)	276 (190-316)	330 (250-410)	
1	C9,12,24,27	75	20	8	6	pF
2	C13,25	11	3	1.2	0.7	pF
3	C8,C32	0.6	0.6	0.6	0.6	pF
4	R23, R22	100	100	100	100	ohm
5	L3,4,7,8	220	150	82	56	nH
6	L9-12	36	30	24	18	nH

**TOP MARKINGS**



## IMPORTANT NOTICE AND DISCLAIMER

RENESAS ELECTRONICS CORPORATION AND ITS SUBSIDIARIES (“RENESAS”) PROVIDES TECHNICAL SPECIFICATIONS AND RELIABILITY DATA (INCLUDING DATASHEETS), DESIGN RESOURCES (INCLUDING REFERENCE DESIGNS), APPLICATION OR OTHER DESIGN ADVICE, WEB TOOLS, SAFETY INFORMATION, AND OTHER RESOURCES “AS IS” AND WITH ALL FAULTS, AND DISCLAIMS ALL WARRANTIES, EXPRESS OR IMPLIED, INCLUDING, WITHOUT LIMITATION, ANY IMPLIED WARRANTIES OF MERCHANTABILITY, FITNESS FOR A PARTICULAR PURPOSE, OR NON-INFRINGEMENT OF THIRD PARTY INTELLECTUAL PROPERTY RIGHTS.

These resources are intended for developers skilled in the art designing with Renesas products. You are solely responsible for (1) selecting the appropriate products for your application, (2) designing, validating, and testing your application, and (3) ensuring your application meets applicable standards, and any other safety, security, or other requirements. These resources are subject to change without notice. Renesas grants you permission to use these resources only for development of an application that uses Renesas products. Other reproduction or use of these resources is strictly prohibited. No license is granted to any other Renesas intellectual property or to any third party intellectual property. Renesas disclaims responsibility for, and you will fully indemnify Renesas and its representatives against, any claims, damages, costs, losses, or liabilities arising out of your use of these resources. Renesas' products are provided only subject to Renesas' Terms and Conditions of Sale or other applicable terms agreed to in writing. No use of any Renesas resources expands or otherwise alters any applicable warranties or warranty disclaimers for these products.

(Rev.1.0 Mar 2020)

### Corporate Headquarters

TOYOSU FORESIA, 3-2-24 Toyosu,  
Koto-ku, Tokyo 135-0061, Japan  
[www.renesas.com](http://www.renesas.com)

### Contact Information

For further information on a product, technology, the most up-to-date version of a document, or your nearest sales office, please visit:  
[www.renesas.com/contact/](http://www.renesas.com/contact/)

### Trademarks

Renesas and the Renesas logo are trademarks of Renesas Electronics Corporation. All trademarks and registered trademarks are the property of their respective owners.

## X-ON Electronics

Largest Supplier of Electrical and Electronic Components

*Click to view similar products for [RF Mixer](#) category:*

*Click to view products by [Renesas](#) manufacturer:*

Other Similar products are found below :

[HMC337-SX](#) [HMC404-SX](#) [mamx-009646-23dbml](#) [HMC339-SX](#) [HMC8192-SX](#) [MIQ24MS-2](#) [HMC220BMS8GETR](#) [M85C](#) [HMC554A-SX](#)  
[HMC8192LG](#) [HMC521A-SX](#) [HMC521ACHIPS](#) [CMD258C4](#) [LT5511EFE](#) [MAMX-011023-SMB](#) [HMC399MS8TR](#) [HMC333TR](#)  
[HMC214MS8TR](#) [HMC175MS8TR](#) [MAMXSS0012TR-3000](#) [109728-HMC129LC4](#) [CSM1-13](#) [SA612AD/01.112](#) [HMC785LP4ETR](#)  
[LT5579IUH#PBF](#) [HMC773ALC3BTR](#) [HMC558ALC3B](#) [HMC329ALC3B](#) [MY63H](#) [AD8343ARUZ-REEL7](#) [AD608AR](#) [AD608ARZ](#)  
[AD831APZ](#) [AD831APZ-REEL7](#) [AD8342ACPZ-REEL7](#) [AD8343ARUZ](#) [AD8344ACPZ-REEL7](#) [ADL5350ACPZ-R7](#) [ADL5363ACPZ-R7](#)  
[ADL5365ACPZ-R7](#) [ADL5801ACPZ-R7](#) [ADL5802ACPZ-R7](#) [HMC1056LP4BE](#) [HMC1057-SX](#) [HMC1063LP3E](#) [HMC1093-SX](#) [HMC1106-](#)  
[SX](#) [HMC129](#) [HMC143](#) [HMC400MS8ETR](#)