

Quick Start Guide

RL78/G14 Fast Prototyping Board

The RL78/G14 Fast Prototyping Board provides an entry point for evaluation, prototyping and development with the RL78/G14 MCU.

Moreover, since this board incorporates an emulator circuit, you can use it for designing your own applications without needing to make further investments in tools. This product includes through-holes for pin headers that allow access to all MCU signal pins, allowing easy prototyping with a breadboard.

(1) Package components

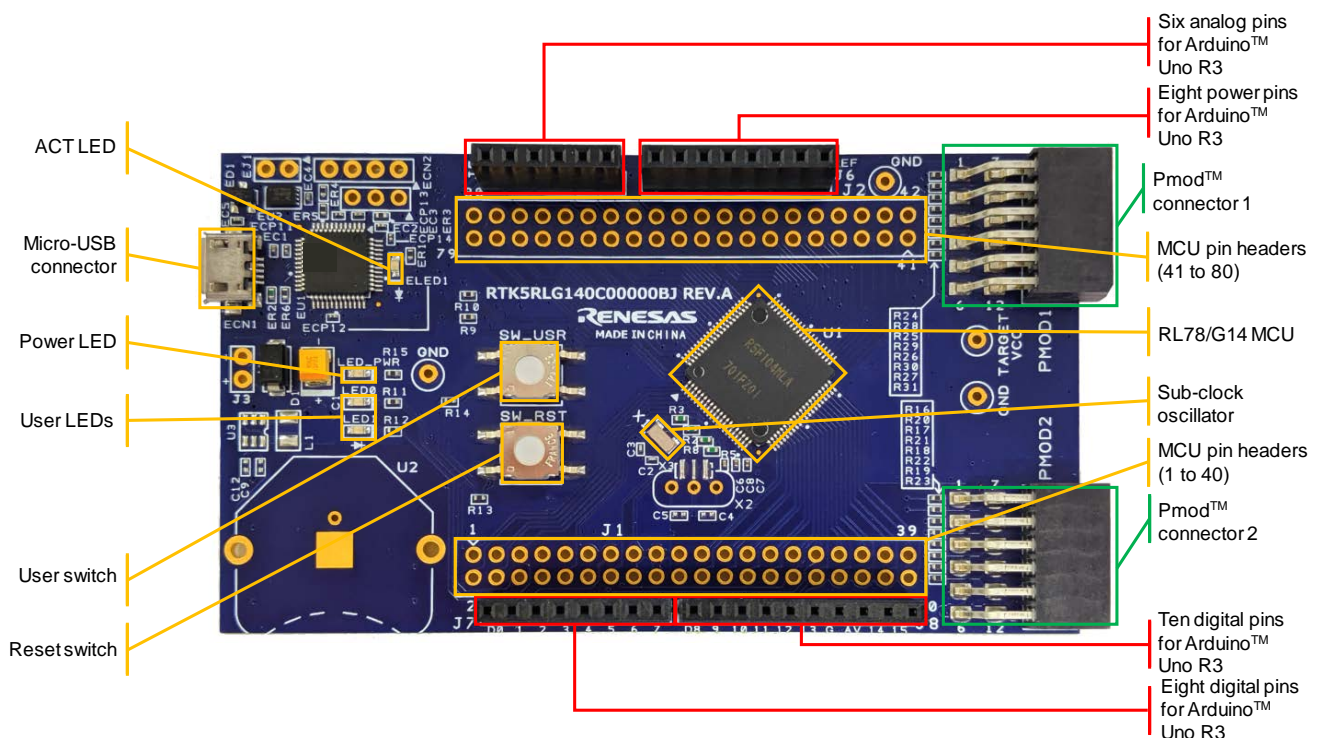
- RL78/G14 Fast Prototyping Board (RTK5RLG140C0000BJ)
- Quick Start Guide (this document)

(2) Table of board specifications

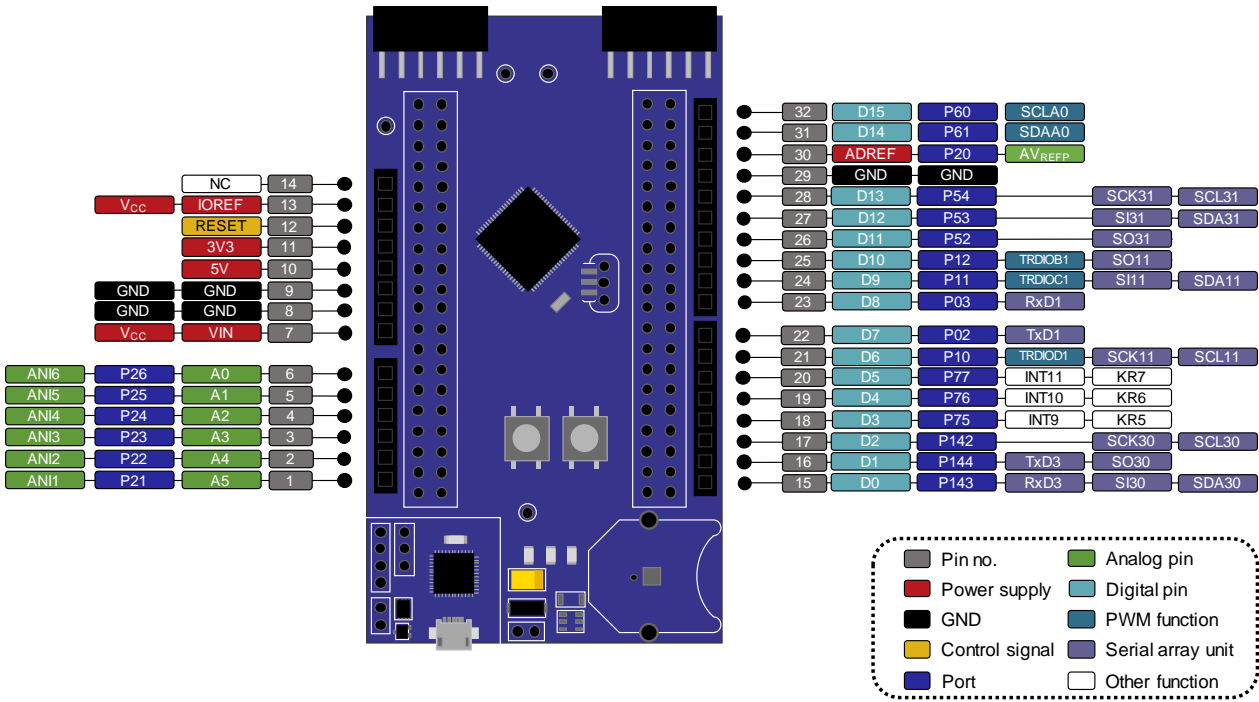
Item	Specification
Evaluation MCU	Part No.: R5F104MLAFB; package: 80-pin LQFP
	On-chip memory: 512-KB ROM, 48-KB RAM, 8-KB data flash memory
Board size	Size: 54 mm x 95 mm; thickness: 1.6 mm
Power-supply voltage	VDD: 1.8 V to 5.5 V; EVDD is the same voltage as VDD.
Power-supply circuit	USB connector: VBUS (5-V input); VBUS is converted to 3.3 V by LDO.
	2-pin external power-supply header*1
	Coin-cell battery: CR2032 (3 V)*1
Push switch	Reset switch x 1; user switch x 1
LED	Power indicator: green x 1, user: green x 2, ACT LED: green x 1
USB connector	Connector: Micro USB Type-B
Pmod™ connector	Connector: Angle type, 12 pins x 2
Arduino™ connector	Connector: 6 pins x 1, 8 pins x 2, 10 pins x 1 The interface is compatible with Arduino™ UNO R3.
MCU header *1	Header: 40 pins x 2

*1: This part is not mounted. Do not fit (DNF).

(3) Parts layout

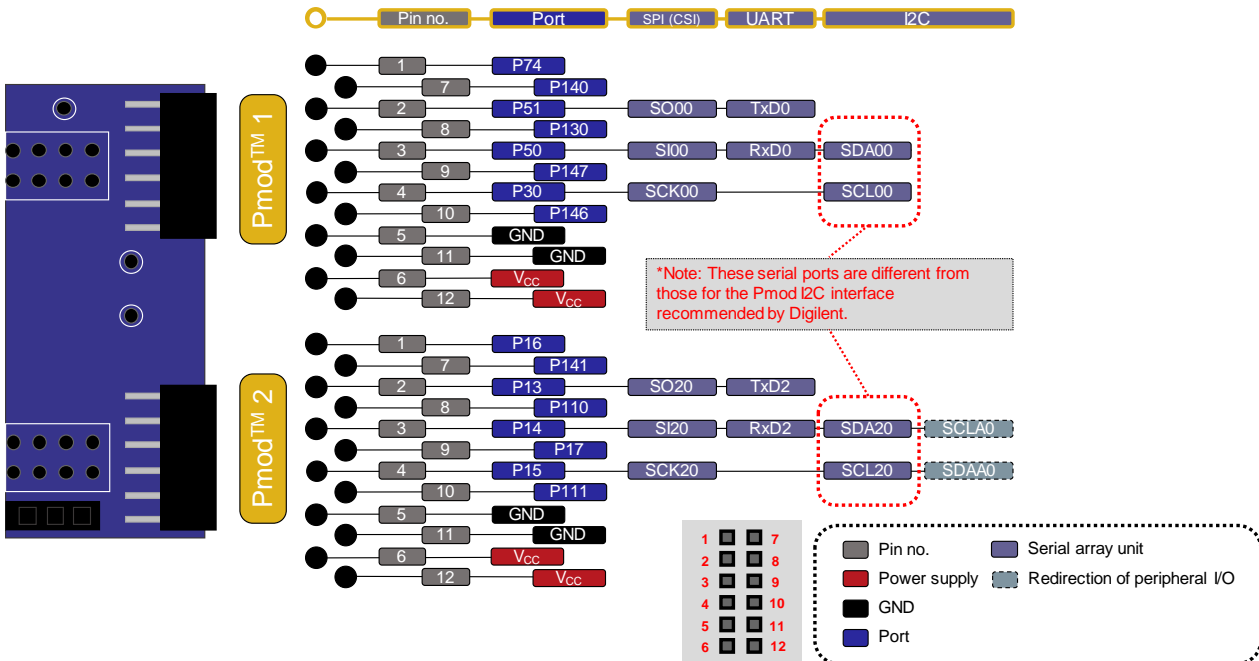


(4) Arduino interface



(5) PMOD interface

The RL78/G14 Fast Prototyping Board has two Pmod connectors for the Type 2A interface.



(6) Note on using the board

Download the user's manual from the Web site below and check the full specifications before using the board. An integrated development environment and flash programming software are also available for downloading.

URL: <http://www.renesas.com/rl78fpb>

X-ON Electronics

Largest Supplier of Electrical and Electronic Components

Click to view similar products for [Development Boards & Kits - Other Processors](#) category:

Click to view products by [Renesas](#) manufacturer:

Other Similar products are found below :

[EVB-MEC1418MECC](#) [20-101-1252](#) [C29XPCIE-RDB](#) [CC-ACC-18M433](#) [MAX1464EVKIT](#) [RTE510Y470TGB00000R](#)
[RTK0EN0001D01001BZ](#) [MAXQ622-KIT#](#) [YR0K505231S000BE](#) [YR0K50571MS000BE](#) [YQB-R5F1057A-TB](#) [QB-R5F104PJ-TB](#) [CC-](#)
[ACC-ETHMX](#) [OV-7604-C7-EVALUATION-BOARD](#) [SK-AD02-D62Q1747TB](#) [SK-BS01-D62Q1577TB](#) [ST7MDT1-EMU2](#) [GROVE BASE](#)
[KIT FOR RASPBERRY PI](#) [CAB M-M\(40-17-RAINBOW\)](#) [CY8CKIT-143A](#) [EK-MPC5744P](#) [KITAURIXTC234TFTTOBO1](#) [ESP32-C3-](#)
[DEVKITC-02](#) [ENW89854AXKF](#) [ENWF9201AVEF](#) [QB-R5F104LE-TB](#) [LV18F V6 64-80-PIN TQFP MCU CARD EMPTY](#) [LV-24-33 V6](#)
[44-PIN TQFP MCU CARD EMPTY](#) [LV-24-33 V6 64-PIN TQFP MCU CARD EMPTY](#) [LV-24-33 V6 80-PIN TQFP 1 MCU CARD EMPTY](#)
[32X32 RGB LED MATRIX PANEL - 6MM PITCH](#) [3.3 - 5 VTRANSLATOR](#) [READY FOR XMEGA CASING \(WHITE\)](#) [RELAY4 BOARD](#)
[ETHERNET CONNECTOR](#) [RFID CARD 125KHZ - TAG](#) [RFID READER](#) [RFM12B-DEMO](#) [MAROON](#) [3G CLICK \(FOR EUROPE AND](#)
[AUSTRALIA\)](#) [MAX232](#) [MAX3232 BOARD](#) [ARTY S7-50](#) [THREE-AXIS ACCELEROMETER BOARD](#) [TINKERKIT HALL SENSOR](#)
[TOUCHPANEL](#) [TOUCHPANEL CONTROLLER](#) [MIKROBOARD FOR AVR WITH ATMEGA128](#) [MIKROBOARD FOR PSOC WITH](#)
[CY8C27643](#) [MIKROBUS CAPE](#)