

RFIC 2019. 05 Update Rev2.2

DESCRIPTION

The LS5601 is an high integration Front-End-Module (FEM), included a SPDT T/R switch and a low noise amplifier (LNA) for wireless applications. The device is typically operated at 3.3V and has excellent NF of 2.2dB in the receiving mode . The FEM is manufactured in a compact, 2.5 x 2.5 (mm), 16-pin, QFN leadless package. The small footprint provides designers the convenience when make the compact product design, and still can meet the system requirement easily .

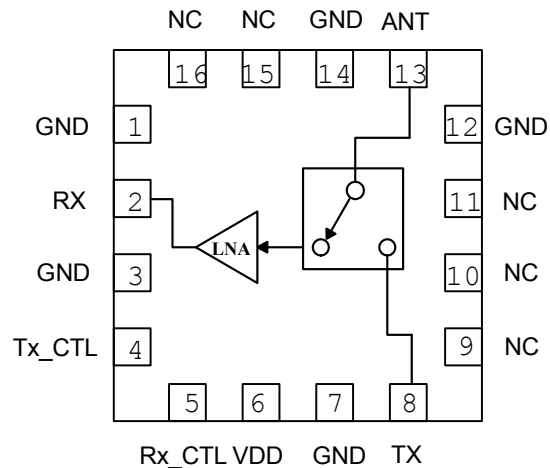
KEY FEATURES

- Frequency range: 2.4GHz ~ 2.5GHz
- High IIP3: +1dBm
- High gain: 20dB
- Frequency range: 5GHz ~ 5.9GHz
- High IIP3: +5dBm
- High gain: 14dB
- LNA Current Consumption: 14mA
- Small QFN (16-pin, 2.5 x 2.5 mm) package

Major Applications

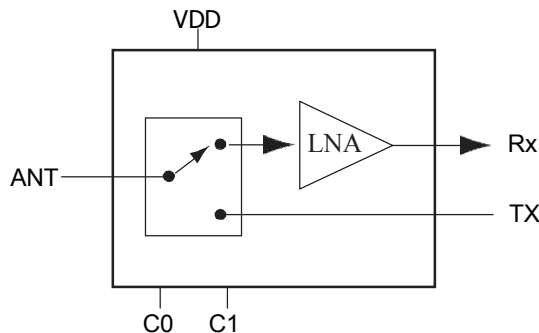
- 802.11 a/b/g/n WLAN
- 802.11 ac WLAN
- 5 GHz ISM radio
- Notebook, Tablet etc portable device
- Router, Access point, Gateway
- Wireless video system

Pin Assignment



QFN 16 pins, 2.5 x 2.5 (mm)

Functional Block



Pin Details

Pin No.	Name	Description
1	GND	Ground
2	RX	LNA output signal
3	GND	Ground
4	Tx_CTL	Tx path logical control signal
5	Rx_CTL	Rx path logical control signal
6	VDD	LNA supply voltage
7	GND	Ground
8	TX	Transmit input signal
9	NC	No connection.
10	NC	No connection.
11	NC	No connection.
12	GND	Ground
13	ANT	Antenna output
14	GND	Ground
15	NC	No connection.
16	NC	No connection.

RFIC 2019. 05 Update Rev2.2

Control Logic Characteristics; TA = 25°C; unless otherwise noted.

Parameter	Specification			Units	Notes
	Min	Typ.	Max		
Control voltage					
High	2.7		5	V	
Low	-0.3		+0.3	V	
Control current:					
High		250	300	μ A	Control Voltage = 3V
Low		<1		μ A	

Transmit AC Characteristics Tx_CTL= 3.3 V, Rx_CTL= 0 V ; CW signal; TA = 25°C; unless otherwise noted.

Parameter	Specification			Units	Notes
	Min	Typ.	Max		
Freq	2.4		2.5	GHz	
Insertion loss (IL)		-0.5		dB	
Input return loss (S11)		-20		dB	@ TX input port
Output return loss (S22)		-19		dB	@ ANT port
Freq	5		5.9	GHz	
Insertion loss (IL)		-1.2		dB	
Input return loss (S11)		-11		dB	@ TX input port
Output return loss (S22)		-11		dB	@ ANT port

Absolute Maximum Ratings

Parameter	Rating	Unit
LNA Supply Voltage	+6	V
LNA power (receive mode)	-3	dBm
TX power (transmit mode)	+36/+40 @ 3.3/5V	dBm
Switch logic control	+6	V
Operating Ambient Temperature	-40 ~ +85	°C
Storage Temperature	-40 ~ +125	°C

Important Note:

The information provided in this datasheet is deemed to be accurate and reliable only at present time. RFIC Technology Corp. reserves the right to make any changes to the specifications in this datasheet without prior notice.

For more information, please contact us at:

Sales Dept.

Tel: +886-2-2698-1022

e-mail: sales@rfintc.com

© 2005 RFIC Technology Corporation All rights reserved.

RFIC Technology Corp. reserved the right to make any changes to the specifications without notice.
RFIC Technology Corp. is a subsidiary of RF Integrated Corporation (U.S.A.)

RFIC 2019. 05 Update Rev2.2

Electrical Characteristics

Receive AC Characteristics Rx_CTL = 3.3 V, Tx_CTL= 0 V ; CW signal; TA = 25°C; unless otherwise noted.

Parameter	Specification			Units	Notes
	Min	Typ.	Max		
Freq	2.4		2.5	GHz	
Receive Gain		20		dB	
Noise Figure (NF)		2		dB	
Idle Current		14	20		mA
Input return loss (S11)		-9		dB	@ ANT port
Output return loss (S22)		-18		dB	@ RX output port
1 dB Input Compression Point (IP1dB)		-10		dBm	@ ANT port
Freq	5		5.9	GHz	
Receive gain		14		dB	
Idle Current		14	20		mA
Noise Figure (NF)		2.2		dB	
Input return loss (S11)		-7		dB	@ ANT port
Output return loss (S22)		-10		dB	@ RX output port
1 dB Input Compression Point (IP1dB)		-6		dBm dBm	@ ANT port

Note : Performance is guaranteed only under the conditions listed in this Table.

For more information, please contact us at:

Sales Dept.

Tel: +886-2-2698-1022

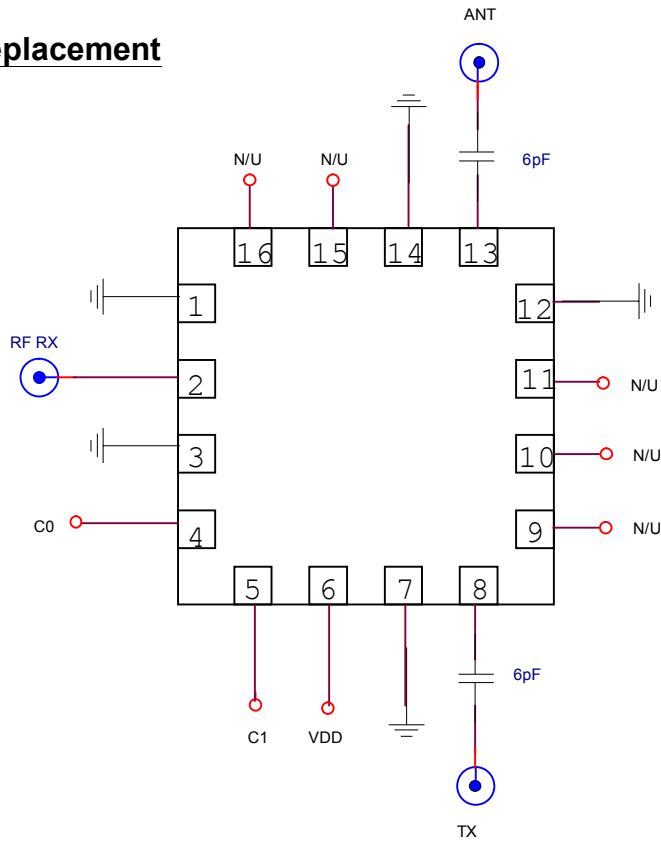
e-mail: sales@rfintc.com

© 2005 RFIC Technology Corporation All rights reserved.

RFIC Technology Corp. reserved the right to make any changes to the specifications without notice.
RFIC Technology Corp. is a subsidiary of RF Integrated Corporation (U.S.A.)

Schematic

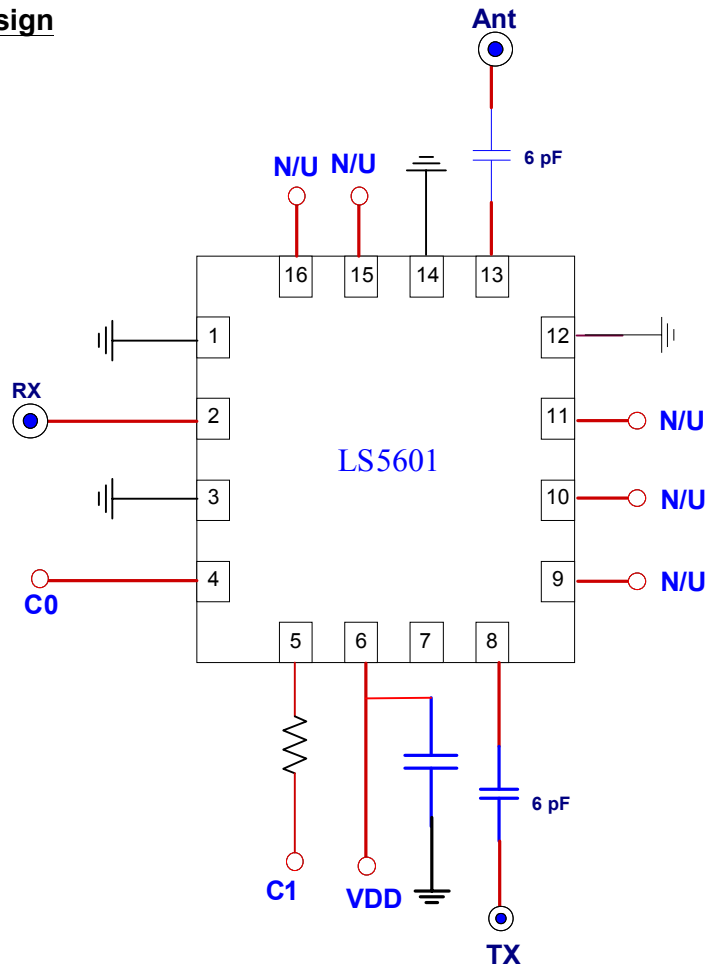
Pin to pin replacement



	C0	C1
Receive LNA on	Off	On
Transmit on	On	Off

Schematic

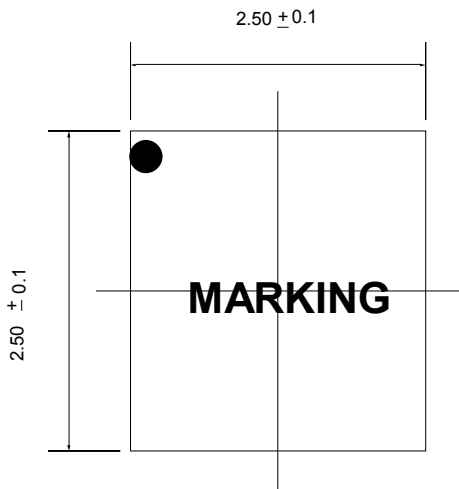
New design



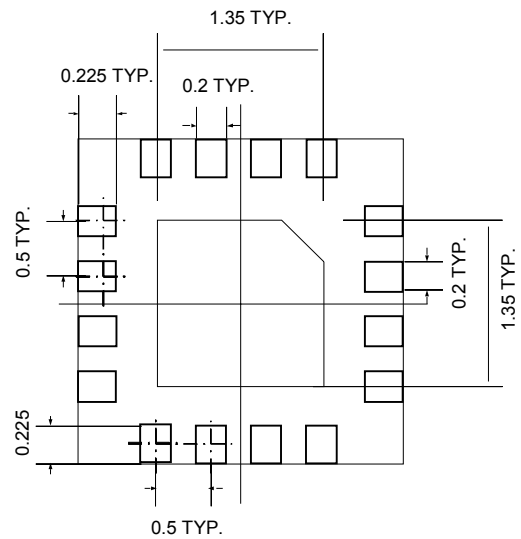
	C0	C1
Receive LNA on	Off	On
Transmit on	On	Off

Package Dimensions

Top View

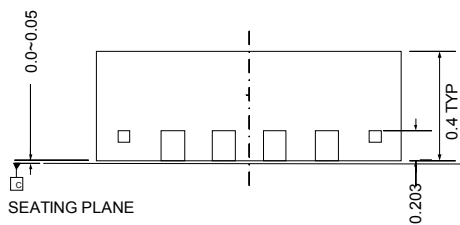


Bottom View



Unit: mm

Side View



Note :

1. Dimension and tolerance conform to ASME Y14.5M-1994.
2. Refer to JEDEC STD. MO-220



RFIC 2019. 05 Update Rev2.2

The product is designed and manufactured for consumer application only and is not intended for any application listed below which requires especially high reliability for the prevention of such defect which could lead to personal injury, death, physical or environmental damage.

- Aircraft equipment.
- Aerospace equipment.
- Undersea equipment.
- Medical equipment.
- Life-saving or life-sustaining applications
- Transportation equipment (vehicles, trains, ships, etc.).
- Traffic signal equipment.
- Disaster prevention / crime prevention equipment.
- Application of similar complexity and/ or reliability requirements to the applications listed in the above.

X-ON Electronics

Largest Supplier of Electrical and Electronic Components

Click to view similar products for [RF Amplifier](#) category:

Click to view products by [RFIC manufacturer](#):

Other Similar products are found below :

[ADPA7006AEHZ](#) [CXE2089ZSR](#) [MGA-43828-BLKG](#) [A82-1](#) [RF2878TR7](#) [BGA 728L7 E6327](#) [BGB719N7ESDE6327XTMA1](#) [HMC1126-SX](#) [HMC342](#) [HMC561-SX](#) [HMC598-SX](#) [HMC-ALH382-SX](#) [HMC-ALH476-SX](#) [SE2433T-R](#) [SE2622L-R](#) [SMA3101-TL-E](#) [SMA39](#) [SMA70-1](#) [A66-1](#) [A66-3](#) [A67-1](#) [LX5535LQ](#) [LX5540LL](#) [RF2373TR7](#) [HMC3653LP3BETR](#) [HMC395](#) [HMC549MS8GETR](#) [HMC576-SX](#) [HMC754S8GETR](#) [HMC-ALH435-SX](#) [SMA101](#) [SMA1031](#) [SMA181](#) [SMA32](#) [SMA411](#) [SMA531](#) [SST12LP17E-XX8E](#) [SST12LP19E-QX6E](#) [TGA2598](#) [WPM0510A](#) [HMC5929LS6TR](#) [HMC5879LS7TR](#) [HMC906A-SX](#) [HMC1127](#) [HMC544A](#) [HMC1126](#) [HMC1110-SX](#) [HMC1087F10](#) [HMC1086](#) [HMC1016](#)