

| | |
|-------------|--------------------------|
| REV | DESCRIPTION |
| A | CHANGED FILE NO. |
| B | SEE ECN #982 FOR CHANGES |
| C | SEE CO 20073 FOR CHANGES |
| ENGR DATE | SK 04.30.12 |
| SM 06.13.02 | SK 04.19.05 |

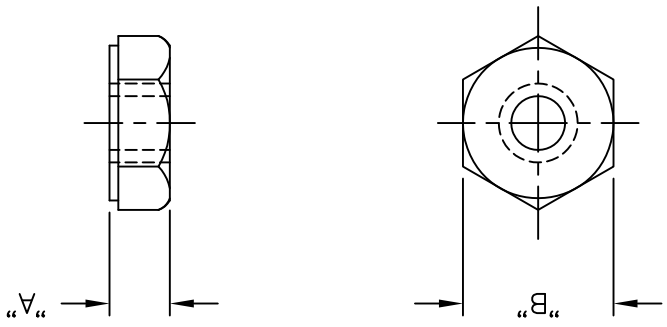
TOLERANCES
UNLESS NOTED
.XX=±.010
.XXX=±.005
FRAC=±1/64
ANG=±1°

RE: RICHCO, INC.

RICHCO INC.
PO BOX 804238, CHICAGO, 60680
(773) 539-4060

PART # SEE TABLE
PRINT TYPE CA

FILE # HN
DWN: PB/JB
APP: DT: 12-14-95 DT:
TITLE: HEX NUT
DWG IN (MM) FINAL
DWC IN (MM) FINAL



* PART DOES NOT CARRY THE WASHER FACE

| PART NO. | MATERIAL | "A" | "B" | THREAD |
|-------------|------------------------|------------|------------|--------|
| *HN-4-40-01 | NYLON 6/6 (RMS-01) | .093 (2.3) | .245 (6.2) | #4-40 |
| HN-6-32-01 | NYLON 6/6 (RMS-01) | .110 (2.8) | .305 (7.7) | #6-32 |
| HN-8-32-01 | NYLON 6/6 (RMS-01) | .125 (3.2) | .338 (8.6) | #8-32 |
| HN-M3-79 | POLYCARBONATE (RMS-79) | .10 (2.5) | .22 (5.5) | M3 |
| HN-M4-01 | NYLON 6/6 (RMS-01) | .12 (3.0) | .27 (6.9) | M4 |
| HN-M4-79 | POLYCARBONATE (RMS-79) | .13 (3.3) | .31 (8.0) | M4 |
| HN-M6-01 | NYLON 6/6 (RMS-01) | .21 (5.4) | .39 (9.9) | M6 |

X-ON Electronics

Largest Supplier of Electrical and Electronic Components

Click to view similar products for [Screws & Fasteners](#) category:

Click to view products by [Richco](#) manufacturer:

Other Similar products are found below :

[5721-1440-1/4-SS](#) [593503FX](#) [0098.0094](#) [0098.9206](#) [0098.9219](#) [0098.9221](#) [0098.9262](#) [596-2114-013](#) [59781-4](#) [59781-6](#) [0098.0026](#)
[0098.9210](#) [0098.9212](#) [60227-01](#) [60227-04](#) [60227-08](#) [60228-09](#) [618-00001](#) [62153-03](#) [62153-11](#) [M316-KSSTMCZ100](#) [M3440-SS](#) [M3442-SS](#) [M3448-SS](#) [6291A](#) [6292-1](#) [6-306105-9](#) [6-306131-4](#) [690432-1](#) [699161-000](#) [700989](#) [7-18023-1](#) [7-21002-8](#) [7230-3](#) [7235-3](#) [7248-1](#) [7248-2](#)
[73542-02](#) [CAPTIVE SHORT THUMBSCREW](#) [745564-1](#) [748174-2](#) [F03-02](#) [SUS316](#) [F1209](#) [751-00001](#) [80011](#) [809704-1](#) [8700](#) [8860220](#)
[9047](#) [95000002B](#) [9885-2](#)