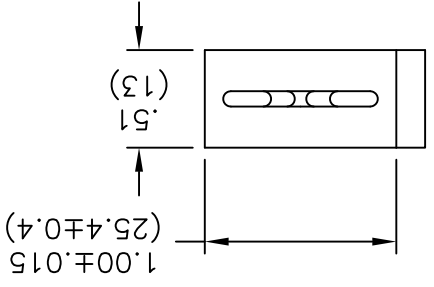
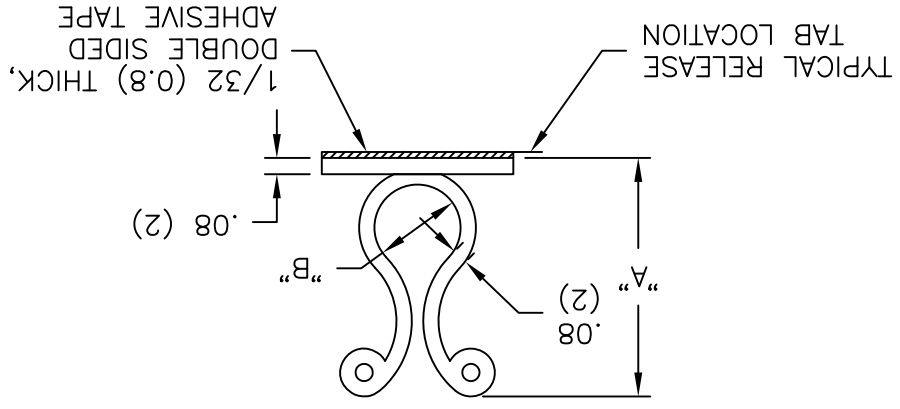


REV	DESCRIPTION	ENGR DATE	TOLERANCES UNLESS NOTED	FILE # KLB	DWN: J.B.	APP:	
A	CHANGED FILE NUMBER	SM 05.31.01	FRAC=±1/64	RE: RICHCO, INC.	DT: 01-23-96		
B	ADDED NOTE 3	SJ 03.05.02	.XX=±.005	RICHCO INC.			
C	ADDED RUBBER ADHESIVE BY SPECIAL ORDER	SM 05.17.02	.XX=±.010				
D	SEE CO 200112 FOR CHANGES	SK 01.24.08					
E	SEE CO 200118 FOR CHANGES	SK 01.30.08					

TITLE:	KURLY-LOK ON BASE
DWG IN	FINAL
PRINT	CA

TO ORDER USE KLB-XXXXA1-RT.

- NOTES:
1. MATERIAL: NYLON 6/6 (RMS-01).  
AVAILABLE BY SPECIAL ORDER ONLY.
  2. COLOR: NATURAL.
  3. ACRYLIC ADHESIVE TAPE (RMS-15), WHITE LINER.  
RUBBER ADHESIVE TAPE (RMS-102), BLUE LINER,  
AVAILABLE BY SPECIAL ORDER ONLY.



PART NO. W/ADHESIVE	"A" REF.	"B" BUNDLE DIA. RANGE
KLB-350A-RT	1.07 (27.2)	.30-.40 (7.6-10.1)
KLB-450A-RT	1.23 (31.2)	.40-.50 (10.1-12.7)
KLB-750A-RT	1.58 (40.1)	.70-.80 (17.8-20.3)

## X-ON Electronics

Largest Supplier of Electrical and Electronic Components

*Click to view similar products for [Cable Mounting & Accessories](#) category:*

*Click to view products by [Richco](#) manufacturer:*

Other Similar products are found below :

[HP-4N](#) [582603-1](#) [009333-000](#) [727844N003](#) [809090N001](#) [8109](#) [843188-000](#) [843459N001](#) [843460N003](#) [8666](#) [967279N002](#) [GPQC1/0](#) [DB-11](#) [1300830208](#) [1300840039](#) [1300900026](#) [1300990052](#) [1301740005](#) [1301800121](#) [1301800416](#) [1300830184](#) [1300990149](#) [1301580036](#) [1301720103](#) [1301720135](#) [1301720152](#) [1301720157](#) [1301740009](#) [1301770011](#) [1301850553](#) [1301860939](#) [1302000074](#) [1302264431](#) [1337706-2](#) [APA18-AK](#) [MTX6UTPSRC-C](#) [1-787307-1](#) [185491N001](#) [HP-6N](#) [C-202-C](#) [202C221-13-0](#) [OMTM-S10-C0](#) [205339-4](#) [CA7308-000](#) [8S23-75FR-CS8184](#) [2684](#) [9648](#) [3089](#) [988382-000](#) [A0270164](#)