

REV	DESCRIPTION	ENGR DATE
A	CHANGED FILE NO. AND TITLE BLOCK	SM 05.04.01
B	SEE ECN #818 FOR CHANGES	SM 10.01.04
C	SEE ECN #914 FOR CHANGES	SK 01.14.05

TOLERANCES
UNLESS NOTED
.XX±.010
.XXX±.005
FRAC=1/64
ANG=±1°

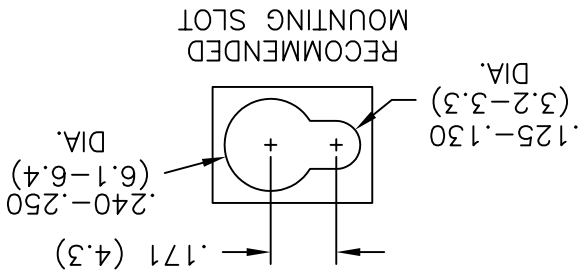
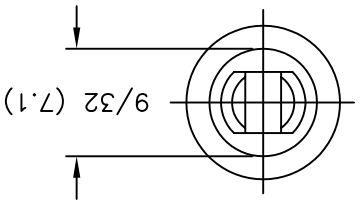
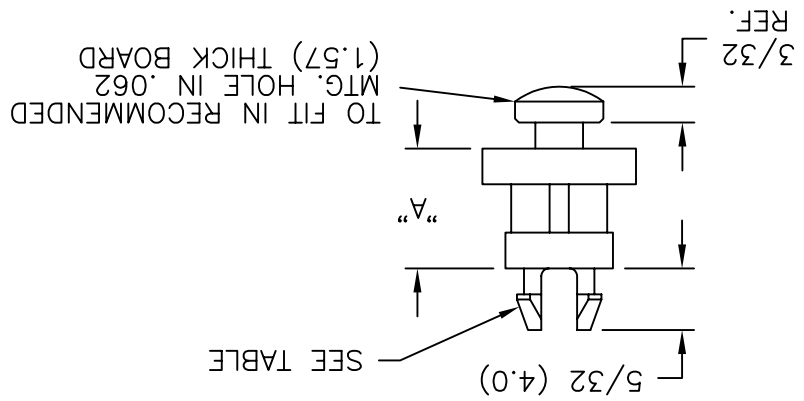
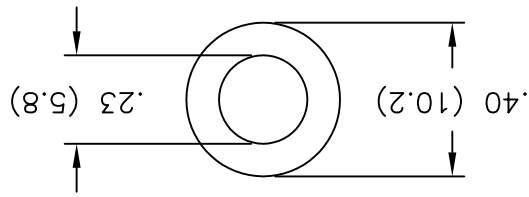
FILE # KSLSP
RE: RICHCO, INC.
RICHCO INC.
PO BOX 804238, CHICAGO, 60680
(773) 539-4060

MAT'L: SEE NOTES
DT: 05-02-94 DT:
DWN: P.B. APP:
PART #
SEE TABLE

PRINT TYPE CA
DWG IN (MM)
FINAL

NOTES:
1. MATERIAL: NYLON 6/6 (RMS-01).
FLAME RETARDANT, NYLON (RMS-19),
AVAILABLE BY SPECIAL ORDER ONLY.
2. COLOR: NATURAL

TITLE: KEY SLOT LOCKING SUPPORT POST



*PARTS AVAILABLE BY SPECIAL ORDER ONLY

PART NO.	DIM. "A"	BOARD HOLE DIA.
KSLSP1-3-01	3/16 (4.8)	TO SNAP-LOCK IN A DIA. HOLE IN A BOARD .062 (1.57) THICK
KSLSP1-4-01	1/4 (6.4)	TO SNAP-LOCK IN A DIA. HOLE IN A BOARD .062 (1.57) THICK
KSLSP1-6-01	3/8 (9.5)	TO SNAP-LOCK IN A DIA. HOLE IN A BOARD .062 (1.57) THICK
KSLSP1-8-01	1/2 (12.7)	TO SNAP-LOCK IN A DIA. HOLE IN A BOARD .062 (1.57) THICK
KSLSP1-10-01	5/8 (15.9)	TO SNAP-LOCK IN A DIA. HOLE IN A BOARD .062 (1.57) THICK
*KSLSP1-12-01	3/4 (19.1)	TO SNAP-LOCK IN A DIA. HOLE IN A BOARD .062 (1.57) THICK
*KSLSP1-14-01	7/8 (22.2)	TO SNAP-LOCK IN A DIA. HOLE IN A BOARD .062 (1.57) THICK
*KSLSP1-16-01	1 (25.4)	TO SNAP-LOCK IN A DIA. HOLE IN A BOARD .062 (1.57) THICK
KSLSP2-3-01	3/16 (4.8)	TO SNAP-LOCK IN A DIA. HOLE IN A BOARD .062 (1.57) THICK
KSLSP2-4-01	1/4 (6.4)	TO SNAP-LOCK IN A DIA. HOLE IN A BOARD .062 (1.57) THICK
KSLSP2-6-01	3/8 (9.5)	TO SNAP-LOCK IN A DIA. HOLE IN A BOARD .062 (1.57) THICK
KSLSP2-8-01	1/2 (12.7)	TO SNAP-LOCK IN A DIA. HOLE IN A BOARD .062 (1.57) THICK
KSLSP2-10-01	5/8 (15.9)	TO SNAP-LOCK IN A DIA. HOLE IN A BOARD .062 (1.57) THICK
*KSLSP2-12-01	3/4 (19.1)	TO SNAP-LOCK IN A DIA. HOLE IN A BOARD .062 (1.57) THICK
*KSLSP2-14-01	7/8 (22.2)	TO SNAP-LOCK IN A DIA. HOLE IN A BOARD .062 (1.57) THICK
*KSLSP2-16-01	1 (25.4)	TO SNAP-LOCK IN A DIA. HOLE IN A BOARD .062 (1.57) THICK

X-ON Electronics

Largest Supplier of Electrical and Electronic Components

Click to view similar products for [Circuit Board Hardware - PCB category](#):

Click to view products by [Richco manufacturer](#):

Other Similar products are found below :

[8919-0-00-15-00-00-03-0](#) [0132-0-15-01-30-27-04-0](#) [0135-0-15-01-30-27-04-0](#) [5970-1-15-01-32-14-04-0](#) [0132-0-15-15-30-27-04-0](#) [0135-0-15-15-30-27-04-0](#) [0149-0-15-15-30-27-04-0](#) [MBI 1 BLUE](#) [7305-0-15-15-47-14-10-0](#) [MKU 1 BLACK](#) [MLN 150/1 BLACK](#) [8579-0-15-80-11-27-10-0](#) [8579-1-15-15-11-27-10-0](#) [8637-0-15-15-21-14-10-0](#) [8830-0-15-01-22-14-10-0](#) [8836-0-00-21-00-00-03-0](#) [PRUEF 2 RED](#) [9976-0-00-00-00-00-03-0](#) [1178-0-01-80-00-00-03-0](#) [PW1616](#) [1215-3-05-00-00-00-01-0](#) [1303-0-15-15-47-14-04-0](#) [1404-3](#) [1404-4](#) [1406-4](#) [1407-3](#) [1406-3](#) [1407-4](#) [1408-3](#) [1424-4](#) [1426-3](#) [1427-3](#) [1427-4](#) [1428-3](#) [1419-4](#) [1424-3](#) [1426-4](#) [1428-4](#) [MPS 1 BLACK](#) [1520150-1](#) [1548-103](#) [1801-0-15-15-30-27-04-0](#) [1938-0-00-00-00-00-03-0](#) [1942-0-00-00-00-00-03-0](#) [2101-3-00-44-00-00-07-0](#) [2104-2-01-44-00-00-07-0](#) [2108-2-00-50-00-00-07-0](#) [2108-3-00-44-00-00-07-0](#) [2109-2-00-44-00-00-07-0](#) [2110-2-00-44-00-00-07-0](#)