

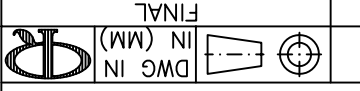
REV	DESCRIPTION	ENGR DATE
A	ADDED -9 PART NO.	JB 04.19.96
B	ADDED -13 PART NO.	RT 11.06.96
C	MAT'L RMS-19 ADDED	J.L. 12.29.97
D	TOP VIEW ADDED	J.L. 12.8.98
E	REMOVED NOTES; ADDED COLUMN "-19" AND CHANGED FILE NO.	SM 08.15.02

TOLERANCES
UNLESS NOTED
.XX=±.010
.XXX=±.005
FRAC=±1/64
ANG=±1°

FILE # MSPM
MAT'L: SEE TABLE
RE: RICHCO, INC.

DWN: P.B. APP:
DT: 03-11-94 DT:
RICHCO INC.
PO BOX 804238, CHICAGO, 60680
(773) 539-4060

PART #
MSPM-SERIES
PRINT TYPE
CA



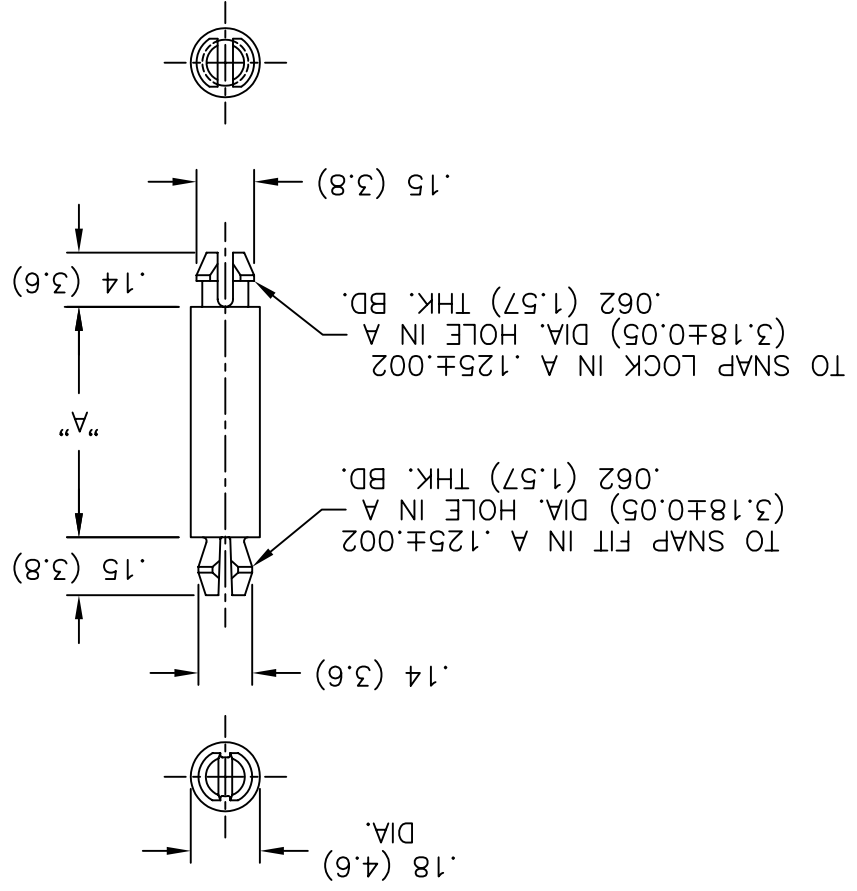
TITLE: MINI SUPPORT POST, MICRO

MSPM-2-01	MSPM-2-19	1/8 (3.2)
MSPM-3-01	MSPM-3-19	3/16 (4.8)
MSPM-4-01	MSPM-4-19	1/4 (6.4)
MSPM-5-01	MSPM-5-19	5/16 (7.9)
MSPM-6-01	MSPM-6-19	3/8 (9.5)
MSPM-7-01	MSPM-7-19	7/16 (11.1)
MSPM-8-01	MSPM-8-19	1/2 (12.7)
MSPM-9-01	MSPM-9-19	9/16 (14.3)
MSPM-10-01	MSPM-10-19	5/8 (15.9)
MSPM-12-01	MSPM-12-19	3/4 (19.1)
MSPM-13-01	MSPM-13-19	13/16 (20.6)
MSPM-14-01	MSPM-14-19	7/8 (22.2)
MSPM-16-01	MSPM-16-19	1 (25.4)
MSPM-18-01	MSPM-18-19	1-1/8 (28.6)
MSPM-20-01	MSPM-20-19	1-1/4 (31.8)
MSPM-22-01	MSPM-22-19	1-3/8 (34.9)
MSPM-24-01	MSPM-24-19	1-1/2 (38.1)

DIM. "A"

FLAME RET.
(RMS-19)
COLOR: NATURAL
PART NO.

NYLON 6/6
(RMS-01)
COLOR: NATURAL
PART NO.



X-ON Electronics

Largest Supplier of Electrical and Electronic Components

Click to view similar products for [Circuit Board Hardware - PCB category](#):

Click to view products by [Richco manufacturer](#):

Other Similar products are found below :

[8919-0-00-15-00-00-03-0](#) [0132-0-15-01-30-27-04-0](#) [0135-0-15-01-30-27-04-0](#) [5970-1-15-01-32-14-04-0](#) [0132-0-15-15-30-27-04-0](#) [0135-0-15-15-30-27-04-0](#) [0149-0-15-15-30-27-04-0](#) [MBI 1 BLUE](#) [7305-0-15-15-47-14-10-0](#) [MKU 1 BLACK](#) [MLN 150/1 BLACK](#) [8579-0-15-80-11-27-10-0](#) [8579-1-15-15-11-27-10-0](#) [8637-0-15-15-21-14-10-0](#) [8830-0-15-01-22-14-10-0](#) [8836-0-00-21-00-00-03-0](#) [PRUEF 2 RED](#) [9976-0-00-00-00-00-03-0](#) [1178-0-01-80-00-00-03-0](#) [PW1616](#) [1215-3-05-00-00-00-01-0](#) [1303-0-15-15-47-14-04-0](#) [1404-3](#) [1404-4](#) [1406-4](#) [1407-3](#) [1406-3](#) [1407-4](#) [1408-3](#) [1424-4](#) [1426-3](#) [1427-3](#) [1427-4](#) [1428-3](#) [1419-4](#) [1424-3](#) [1426-4](#) [1428-4](#) [MPS 1 BLACK](#) [1520150-1](#) [1548-103](#) [1801-0-15-15-30-27-04-0](#) [1938-0-00-00-00-00-03-0](#) [1942-0-00-00-00-00-03-0](#) [2101-3-00-44-00-00-07-0](#) [2104-2-01-44-00-00-07-0](#) [2108-2-00-50-00-00-07-0](#) [2108-3-00-44-00-00-07-0](#) [2109-2-00-44-00-00-07-0](#) [2110-2-00-44-00-00-07-0](#)