

REV	DESCRIPTION	ENGR DATE	TOLERANCES UNLESS NOTED MATERIAL: SEE NOTES	FILE # PCC	DWN: P.B.	APP:	DT: 07-11-94	DT:	DT: 07-11-94	DT:
A	TOLERANCE FOR "B" WAS ±.020(0.5)	MO 2/11/98	FRAC=±1/64 .XXX=±.005 .XX=±.010	RE: RICHCO, INC.	RICHCO INC.	PO BOX 804238, CHICAGO, 60680	(773) 539-4060			
B	ADDED RMS-118 AND -119, CHANGED FILE NO. AND TITLE BLOCK	SM 06.01.01								
C	ADDED NOTES	SM 06.20.01								
D	SEE ECN #1254 FOR CHANGES	SK 11.29.06								

TITLE: PLASTIC COATED CLAMP

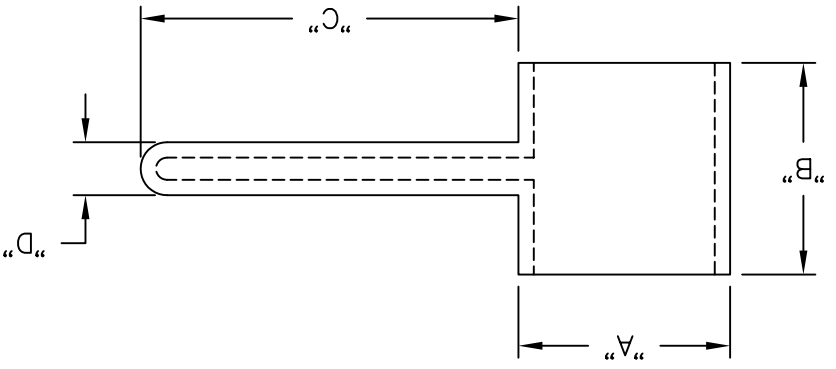
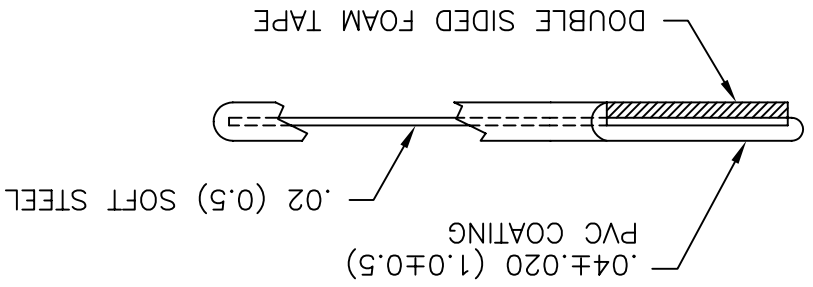
DWG IN (MM) FINAL



PRINT TYPE CA

REVISION	DESCRIPTION	DATE
A	TOLERANCE FOR "B" WAS ±.020(0.5)	MO 2/11/98
B	ADDED RMS-118 AND -119, CHANGED FILE NO. AND TITLE BLOCK	SM 06.01.01
C	ADDED NOTES	SM 06.20.01
D	SEE ECN #1254 FOR CHANGES	SK 11.29.06

- NOTES:
1. MATERIAL: SOFT STEEL (RMS-203)
 2. COATING: PVC (RMS-118).
 3. POLYETHYLENE FOAM TAPE (RMS-119)
 4. COLOR: WHITE.



PART NO.	"A"	"B"	"C"	"D"
	REF.	REF.	REF.	REF.
PCC-5	.31 (8.0)	.31 (8.0)	.59 (15.0)	.08 (2.1)
PCC-9	.55 (14.0)	.55 (14.0)	.98 (25.0)	.14 (3.5)
PCC-12	.75 (19.0)	.75 (19.0)	1.58 (40.0)	.16 (4.0)

X-ON Electronics

Largest Supplier of Electrical and Electronic Components

Click to view similar products for [Cable Mounting & Accessories](#) category:

Click to view products by [Richco](#) manufacturer:

Other Similar products are found below :

[HP-4N](#) [582603-1](#) [009333-000](#) [727844N003](#) [809090N001](#) [8109](#) [843188-000](#) [843459N001](#) [843460N003](#) [8666](#) [967279N002](#) [GPQC1/0](#) [DB-](#)
[11](#) [1300830208](#) [1300840039](#) [1300900026](#) [1300990052](#) [1301740005](#) [1301800121](#) [1301800416](#) [1300830184](#) [1300990149](#) [1301580036](#)
[1301720103](#) [1301720135](#) [1301720152](#) [1301720157](#) [1301740009](#) [1301770011](#) [1301850553](#) [1301860939](#) [1302000074](#) [1302264431](#)
[1337706-2](#) [APA18-AK](#) [MTX6UTPSRC-C](#) [1-787307-1](#) [185491N001](#) [HP-6N](#) [C-202-C](#) [202C221-13-0](#) [OMTM-S10-C0](#) [205339-4](#) [CA7308-](#)
[000](#) [8S23-75FR-CS8184](#) [2684](#) [9648](#) [3089](#) [988382-000](#) [A0270164](#)