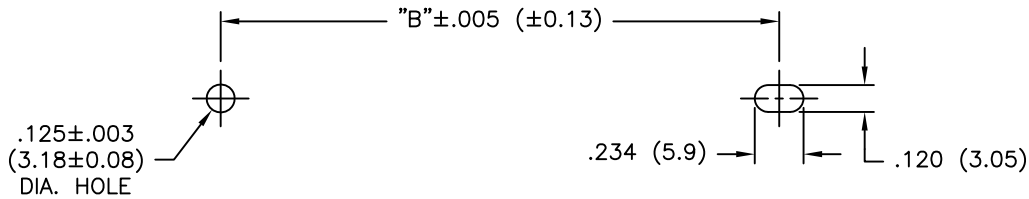
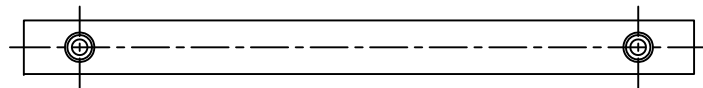
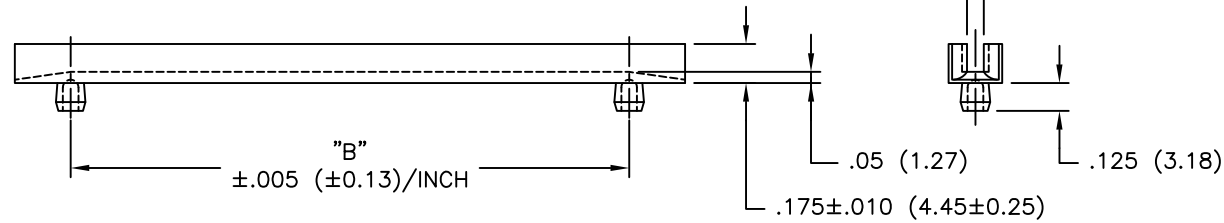
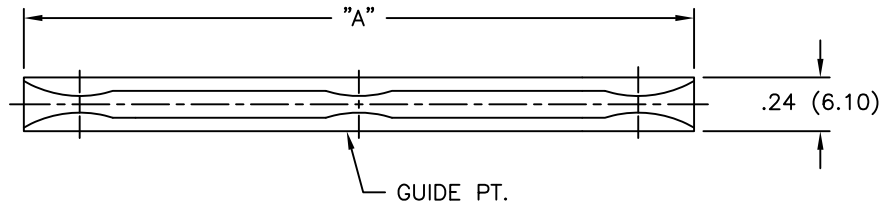


PART NO.	DIM. "A"	DIM. "B"	GUIDE PT.
RCGH-25	2-1/2 (63.50)	2 (50.80)	2
RCGH-30	3 (76.20)	2-1/2 (63.50)	3
RCGH-35	3-1/2 (88.90)	3 (76.20)	3
RCGH-40	4 (101.60)	3-1/2 (88.90)	4
RCGH-45	4-1/2 (114.30)	4 (101.60)	4
RCGH-50	5 (127.00)	4-1/2 (114.30)	4
RCGH-55	5-1/2 (139.70)	5 (127.00)	5
RCGH-60	6 (152.40)	5-1/2 (139.70)	5



RECOMMENDED MOUNTING HOLES
IN 1/16" (1.6) NOMINAL THICK
PANEL

NOTES:

- MATERIAL: NYLON 6/6 (RMS-01).
FLAME RETARDANT NYLON (RMS-19).
AVAILABLE BY SPECIAL ORDER ONLY.
- COLOR: NATURAL.

TITLE: RACK CARD GUIDE, TYPE "H"			DWG IN IN (MM)		FINAL	
TOLERANCES UNLESS NOTED .XX= \pm .010 .XXX= \pm .005 FRAC= \pm 1/64 ANG= \pm 1'			FILE # RCGH	DWN: P.B.	APP:	PART # SEE TABLE
D SEE CO 200237 FOR CHANGES SK 09.09.08			MAT'L: SEE NOTES	DT: 06-22-94	DT:	
C SEE ECN #831 FOR CHANGES SM 08.09.04			RE: RICHCO, INC.	RICHCO INC. PO BOX 804238, CHICAGO, 60680 (773) 539-4060		
B CHANGED FILE NUMBER SM 05.11.01						
A FR-NYLON RMS-19 ADDED J.L. 4.1.98						
REV DESCRIPTION ENGR DATE						

X-ON Electronics

Largest Supplier of Electrical and Electronic Components

Click to view similar products for [Electrical Enclosure Accessories](#) category:

Click to view products by [Richco](#) manufacturer:

Other Similar products are found below :

[60121-06-028 C-325 Black](#) [71884-04-028 CM3-100 Black](#) [71884-18-028 LH43-200 Black](#) [71884-24-028 LH75-200 Black](#) [71885-01-028 CM6-150 Black](#) [72459-02-028 DM-3 BLACK](#) [81501-01-000 XPL, 9VB Black](#) [82402-01 PT-8 ALUM](#) [1335GSKT3](#) [14101FP-PK](#) [CB-1263-BT](#) [1611512-4](#) [HB-11498](#) [RC-7775](#) [HM BLACK PANEL](#) [61033-01-000](#) [115123-01-508 CN-RL RS](#) [115124-01-508 CN-XRL XRS](#) [115119-01-000 CN-RL RS](#) [115123-01-000 CN-RL RS](#) [60121-04-028 C-275 Black](#) [60128-01-072](#) [60222-01-028 CM6-225 Black](#) [60272-01-028 CM3-150 Black](#) [60851-01-028 CM69-120 Black](#) [62291-502-000-KEU-10-BLK](#) [62452-01-000 HML-9VB, EB Black](#) [71884-25-028 LH89-130 Black](#) [AXX2POSTBRCKT](#) [FUPMESK](#) [71884-23-028 LH75-130 Black](#) [1317GSKTSC](#) [8G813V40389](#) [DVA.1-10-15-M4-10-70](#) [DVC.1-60-49-60-M10-28-55](#) [DVC.1-15-8,5-15-M4-10-40](#) [DVC.1-20-12-30-M6-18-40](#) [DVC.1-30-18-25-M8-20-40](#) [DVC.1-35-31-15-M8-20-40](#) [DVC.1-35-31-15-M8-20-70](#) [DVC.1-75-60-40-M12-37-70](#) [DVC.2-30-22-20-M8-20-55](#) [DVC.2-40-30-25-M8-23-55](#) [DVC.2-75-60-40-M12-37-55](#) [DVC.2-21-16-22-M6-18-40](#) [DVC.2-40-20-48-M8-23-40](#) [DVC.2-40-32-50-M8-23-40](#) [DVC.2-20-14-19-M6-18-70](#) [DVC.2-25-18-20-M6-18-70](#) [DVC.3-20-14-20-M6-40](#) [DVC.3-20-14-30-M6-40](#)