

|     |                                  |             |
|-----|----------------------------------|-------------|
| REV | DESCRIPTION                      | ENGR DATE   |
| A   | GIVEN PART NUMBER                | JB 09.05.95 |
| B   | CHANGED FILE NO. AND TITLE BLOCK | SM 05.16.01 |
| C   | SEE ECN #1289 FOR CHANGES        | SK 02.15.07 |

TOLERANCES  
UNLESS NOTED  
.XX=±.010  
.XXX=±.005  
FRAC=1/64  
ANG=1°

RE: RICHCO, INC.

PO BOX 804238, CHICAGO, 60680  
(773) 539-4060

PRINT TYPE CA

SEE TABLE

PART #

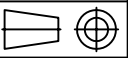
FILE # RRP

DWN: P.B. APP:

FINAL



DWG IN IN (MM)

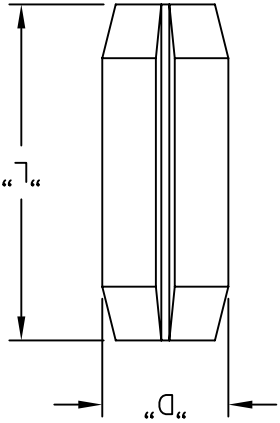


TITLE: ROUND ROLL PINS

NOTES:  
1. MAT'L: PASSIVATED STAINLESS STEEL  
SPRING PINS PER MIL-P-10791 (RMS-224)

|             |              |           |
|-------------|--------------|-----------|
| RRP-250     | RRP-312      | RRP-375   |
| R1001-062   | R11073-062   | R1209-062 |
| R1002-093   | R11073-093   | R1209-093 |
| R1003-125   | R11073-125   | R1209-125 |
| R1107-062   | R1107310-062 |           |
| R110710-062 | R1107310-093 |           |
|             | R1107310-125 |           |

ROLL PINS:(RRP) FOR USE WITH THE FOLLOWING  
CARD INSERTERS/EXTRACTORS:



| PART NO. | DIM. "L"   | DIM. "D"   |
|----------|------------|------------|
| RRP-250  | 1/4 (6.4)  | 3/32 (2.4) |
| RRP-312  | 5/16 (8.0) | 3/32 (2.4) |
| RRP-375  | 3/8 (9.5)  | 1/8 (3.2)  |

## X-ON Electronics

Largest Supplier of Electrical and Electronic Components

*Click to view similar products for [Racks & Rack Cabinet Accessories](#) category:*

*Click to view products by [Richco](#) manufacturer:*

Other Similar products are found below :

[CR-1727](#) [M00-PLN](#) [F2420](#) [F2424](#) [8310-1032-SS](#) [9104](#) [PLFF2000](#) [PLFF6000](#) [GP216](#) [PTFA60000LG](#) [H-9163-B](#) [HEH050BA](#) [1427C3](#)  
[BAS-5104](#) [N-700-2](#) [190-002](#) [HTL10](#) [HTS10](#) [PC-118](#) [PC-780L](#) [PC-79](#) [PC-800](#) [SC4-28](#) [F3024](#) [AKWAMT](#) [PLFF1000](#) [GRPB12PG](#) [CG3-](#)  
[340S/12](#) [2CWDP36](#) [2CWDP48](#) [2SSHINGE](#) [CP-001BK](#) [CPL19431LG1](#) [R570-004-107](#) [M6123-4007-SS](#) [TS170](#) [531300535](#) [BRX-12290](#)  
[C4BD3077SBK1](#) [UPS 7-17-14 PLAIN](#) [LP40](#) [5261304-07](#) [CCA26-44-01](#) [706-102](#) [CG3-160G](#) [7112C-PLN ALUM](#) [CM10](#) [TS81](#) [7142](#)  
[GP134](#)