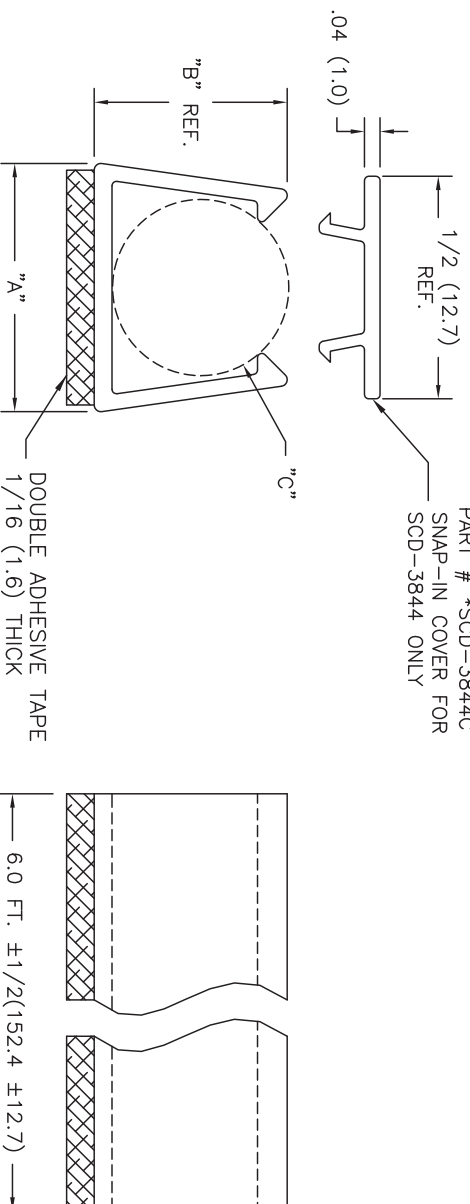


PART NO.	"A"	"B" REF.	"C" HOLDING DIA.	CABLE RECOMMENDATIONS	
				COAX	COMPUTER
SCD-1521	.30(7.6)	.25(6.4)	.156-.218(4.0-5.5)	RG58	
SCD-2228	.36(9.1)	.29(6.6)	.218-.280(4.0-7.1)	RG59,62,6	9 LINE
*SCD-2838	.47(11.9)	.38(9.8)	.280-.375(7.1-9.5)	TWINAX	9-15 LINE
*SCD-3844	.55(14.0)	.43(10.9)	.375-.438(9.5-11.1)		25 LINE

*PARTS AVAILABLE BY SPECIAL ORDER ONLY

PART # *SCD-3844C
SNAP-IN COVER FOR
SCD-3844 ONLY



- NOTES:
1. MATERIAL: RIGID PVC (RMS-32).
 2. COLOR: COMPUTER TAN.
 3. ACRYLIC ADHESIVE TAPE (RMS-15), WHITE LINER.
 4. MAX. OPR. TEMP.: 120° F.
 5. AVAILABLE IN CUSTOM CUT LENGTH UPON REQUEST.
 6. PACKAGING: 10 PIECES, 6 FT. LONG.

SEE CO. 200604 FOR CHANGES		SK 12.01.10	TITLE: SINGLE CABLE DUCT		DWG IN INCHES	
G	RMS-32 WAS RMS-04 (ECN #465)	SM 09.19.02			FINAL	
F	ADDED RMS-04 TO MAT'L NOTE	SM 08.05.02	TOLERANCES UNLESS NOTED	FILE # SOD	DWN: R.S.	APP:
E	ADDED NOTE 6.	SM 03.20.02	RE: .XX=±.020	MAT'L: SEE NOTES	DI: 05-03-93	DI:
D	ADDED NOTE 3.	SM 06.29.01	RE: .XX=±.015	RICHCO, INC.	RICHCO INC.	
C	FILE # WAS 05530	RG11/17/00	RE: .XX=±1/32		Po BOX 804238, CHICAGO, 60680	
B		PB 102794	RE: ANG=±1°		(773) 539-4060	
A	DIM. DOUBLE ADHESIVE TAPE WAS NOTE 5	ENGR DATE			PART #	SEE TABLE
REV	DESCRIPTION					PRINT TYPE
						CA

X-ON Electronics

Largest Supplier of Electrical and Electronic Components

Click to view similar products for [Wire Ducting & Raceways](#) category:

Click to view products by [Richco](#) manufacturer:

Other Similar products are found below :

[FG5EI25-A](#) [PED12](#) [PED8](#) [PEVEP](#) [FXOE3-10M3](#) [FZD3-3M2](#) [FZLE10-10M2](#) [FZOE10-10M1](#) [FZOLE10-10M2](#) [FZPE3-10M2](#) [923223-000](#)
[PRAF6WH-X](#) [A0405538](#) [1301150342](#) [1301230083](#) [1301150343](#) [1301230086](#) [1301240054](#) [AX101472](#) [AX102652](#) [AX102653](#) [AX102737](#)
[S62DS](#) [S65DS](#) [S75DSH](#) [A0405536](#) [A0405537](#) [A0649869](#) [FXOD3-3M1](#) [FXOE10-10M2](#) [FZLD3-3M2](#) [FZOE3-10M1](#) [FZOE3-10M2](#)
[FZOLE3-10M2](#) [FZOPE10-10M1](#) [FZPD3-3M2](#) [PZRFE4](#) [PZWIFIEN](#) [PZWIFIENA](#) [CNPSNH](#) [CNSPC](#) [5400ES](#) [WDLT-1216-72](#) [655287-000](#)
[S75DS](#) [1301180028](#) [801A-LSP](#) [TGECAW](#) [206461-000](#) [853425-000](#)