

| | | |
|-----|-------------------------------------|-------------|
| REV | DESCRIPTION | ENGR DATE |
| A | CONVERTED TO ACAD | PB 01.23.95 |
| B | REMOVED NOTES, AND CHANGED FILE NO. | SM 04.19.02 |

TOLERANCES UNLESS NOTED
 .XX=±.010
 .XXX=±.005
 FRAC=1/64
 ANG=±1°


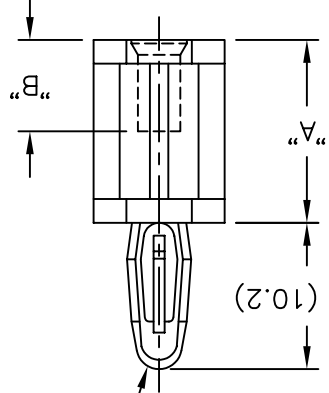
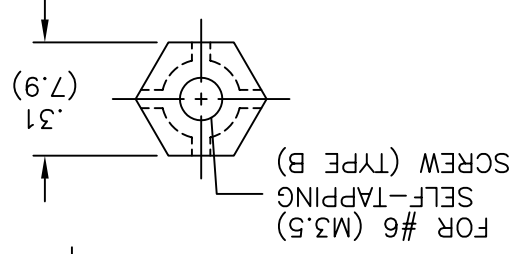
FILE # TCBS
 DWN: P.B.
 APP:
 MAT'L: SEE NOTES
 DT: 01-23-95
 RE: RICHCO INC.

RICHCO INC.
 PO BOX 804238, CHICAGO, 60680
 (773) 539-4060

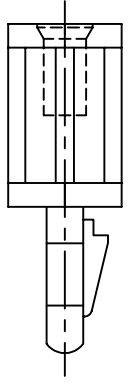
PART #
 SEE TABLE
 PRINT TYPE CA

TITLE: SCREW-MOUNT CIRCUIT BOARD SUPPORT

DWG IN (MM) FINAL

TO SNAP-LOCK IN A .156±.003
 (4.00±0.08) DIA. HOLE, IN A
 .062 (1.57) THICK BOARD



| | | | | |
|-------------------------|-------------------------|----------------|----------------|-------------|
| DIM "A" ±.015 (±0.4) | TCBS-4-01 | TCBS-4-19 | 1/4 (6.4) | |
| | TCBS-6-01 | TCBS-6-19 | 3/8 (9.5) | |
| | TCBS-8-01 | TCBS-8-19 | 1/2 (12.7) | |
| | TCBS-10-01 | TCBS-10-19 | 5/8 (15.9) | |
| | TCBS-12-01 | TCBS-12-19 | 3/4 (19.1) | |
| | TCBS-14-01 | TCBS-14-19 | 7/8 (22.2) | |
| | TCBS-16-01 | TCBS-16-19 | 1 (25.4) | |
| | TCBS-18-01 | TCBS-18-19 | 1-1/8 (28.6) | |
| | TCBS-20-01 | TCBS-20-19 | 1-1/4 (31.7) | |
| | TCBS-22.5-01 | TCBS-22.5-19 | 1-13/32 (35.7) | |
| | DIM "B" ±.015 (±0.4) | TCBS-4-01 | TCBS-4-19 | 13/64 (5.2) |
| | | TCBS-6-01 | TCBS-6-19 | 13/64 (5.2) |
| | | TCBS-8-01 | TCBS-8-19 | 13/64 (5.2) |
| | | TCBS-10-01 | TCBS-10-19 | 13/64 (5.2) |
| | | TCBS-12-01 | TCBS-12-19 | 13/64 (5.2) |
| TCBS-14-01 | | TCBS-14-19 | 13/64 (5.2) | |
| TCBS-16-01 | | TCBS-16-19 | 13/64 (5.2) | |
| TCBS-18-01 | | TCBS-18-19 | 13/64 (5.2) | |
| TCBS-20-01 | | TCBS-20-19 | 13/64 (5.2) | |
| TCBS-22.5-01 | | TCBS-22.5-19 | 13/64 (5.2) | |
| NYLON 6/6 | | (RMS-01) | | |
| FLAME RET. | | (RMS-19) | | |
| COLOR: NATURAL | | COLOR: NATURAL | | |
| PART NO. | | PART NO. | | |

X-ON Electronics

Largest Supplier of Electrical and Electronic Components

Click to view similar products for [Circuit Board Hardware - PCB category](#):

Click to view products by [Richco manufacturer](#):

Other Similar products are found below :

[8919-0-00-15-00-00-03-0](#) [0132-0-15-01-30-27-04-0](#) [0135-0-15-01-30-27-04-0](#) [5970-1-15-01-32-14-04-0](#) [0132-0-15-15-30-27-04-0](#) [0135-0-15-15-30-27-04-0](#) [0149-0-15-15-30-27-04-0](#) [MBI 1 BLUE](#) [7305-0-15-15-47-14-10-0](#) [MKU 1 BLACK](#) [MLN 150/1 BLACK](#) [8579-0-15-80-11-27-10-0](#) [8579-1-15-15-11-27-10-0](#) [8637-0-15-15-21-14-10-0](#) [8830-0-15-01-22-14-10-0](#) [8836-0-00-21-00-00-03-0](#) [PRUEF 2 RED](#) [9976-0-00-00-00-00-03-0](#) [1178-0-01-80-00-00-03-0](#) [PW1616](#) [1215-3-05-00-00-00-01-0](#) [1303-0-15-15-47-14-04-0](#) [1404-3](#) [1404-4](#) [1406-4](#) [1407-3](#) [1406-3](#) [1407-4](#) [1408-3](#) [1424-4](#) [1426-3](#) [1427-3](#) [1427-4](#) [1428-3](#) [1419-4](#) [1424-3](#) [1426-4](#) [1428-4](#) [MPS 1 BLACK](#) [1520150-1](#) [1548-103](#) [1801-0-15-15-30-27-04-0](#) [1938-0-00-00-00-00-03-0](#) [1942-0-00-00-00-00-03-0](#) [2101-3-00-44-00-00-07-0](#) [2104-2-01-44-00-00-07-0](#) [2108-2-00-50-00-00-07-0](#) [2108-3-00-44-00-00-07-0](#) [2109-2-00-44-00-00-07-0](#) [2110-2-00-44-00-00-07-0](#)