

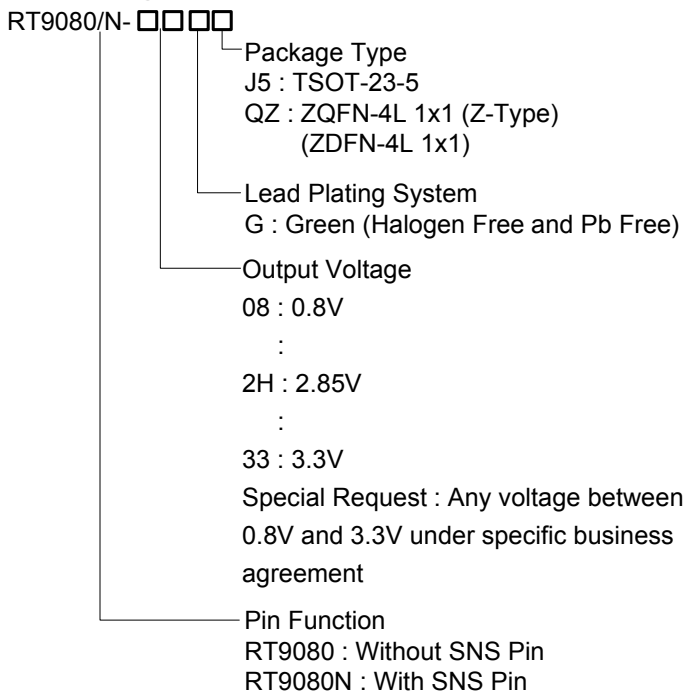
## 2μA I<sub>Q</sub>, 600mA Low-Dropout Linear Regulator

### General Description

The RT9080 is a low-dropout (LDO) voltage regulators with enable function that operates from 1.2V to 5.5V. It provides up to 600mA of output current and offers low-power operation in miniaturized packaging.

The features of low quiescent current as low as 2μA and almost zero disable current is ideal for powering the battery equipment to a longer service life. The RT9080 is stable with the ceramic output capacitor over its wide input range from 1.2V to 5.5V and the entire range of output load current (0mA to 600mA).

### Ordering Information



Note :

Richtek products are :

- ▶ RoHS compliant and compatible with the current requirements of IPC/JEDEC J-STD-020.
- ▶ Suitable for use in SnPb or Pb-free soldering processes.

### Features

- 2μA Ground Current at no Load
- PSRR = 75dB at 1kHz
- Adjustable Output Voltage Available by Specific Application
- ±2% Output Accuracy
- 600mA (V<sub>IN</sub> ≥ 2.3V) Output Current with EN
- Low (0.1μA) Disable Current
- 1.2V to 5.5V Operating Input Voltage
- Dropout Voltage : 0.31V at 600mA when V<sub>OUT</sub> ≥ 3V
- Support Fixed Output Voltage 0.8V to 3.3V
- Stable with Ceramic or Tantalum Capacitor
- Current-Limit Protection
- Over-Temperature Protection
- TSOT-23-5 and ZQFN-4L 1x1 (ZDFN-4L 1x1) Packages Available

### Applications

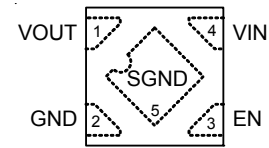
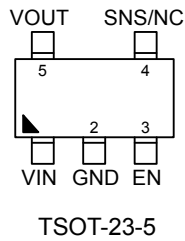
- Portable, Battery Powered Equipment
- Ultra Low Power Microcontrollers
- Notebook Computers

### Marking Information

For marking information, contact our sales representative directly or through a Richtek distributor located in your area.

## Pin Configuration

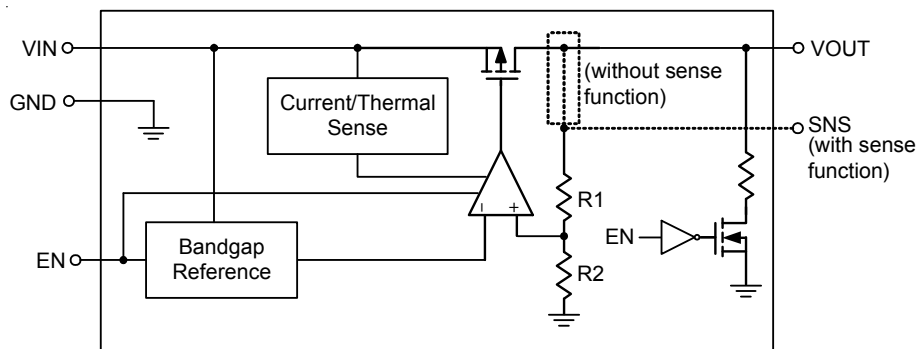
(TOP VIEW)



## Functional Pin Description

| Pin No.   |                           | Pin Name | Pin Function                                     |
|-----------|---------------------------|----------|--|
| TSOT-23-5 | ZQFN-4L 1x1 (ZDFN-4L 1x1) |          |  |
| 1         | 4                         | VIN      | Supply voltage input.                            |
| 2         | 2                         | GND      | Ground.  |
| 3         | 3                         | EN       | Enable control input.                            |
| 4         | --                        | SNS      | Output voltage sense. (RT9080N only)             |
|           |                           | NC       | No internal connection.                          |
| 5         | 1                         | VOUT     | Output of the regulator.                         |
| --        | 5 (Exposed Pad)           | SGND     | Substrate of chip. Leave floating or tie to GND. |

## Functional Block Diagram



## Operation

### Basic Operation

The RT9080 is a low quiescent current linear regulator designed especially for low external components system. The input voltage range is from 1.2V to 5.5V.

The minimum required output capacitance for stable operation is 1 $\mu$ F effective capacitance after consideration of the temperature and voltage coefficient of the capacitor.

### Output Transistor

The RT9080 builds in a P-MOSFET output transistor which provides a low switch-on resistance for low dropout voltage applications.

### Error Amplifier

The Error Amplifier compares the internal reference voltage with the output feedback voltage from the internal divider, and controls the Gate voltage of P-MOSFET to support good line regulation and load regulation at output voltage.

### Enable

The RT9080 delivers the output power when it is set to enable state. When it works in disable state, there is no output power and the operation quiescent current is almost zero.

### Current-Limit Protection

The RT9080 provides current limit function to prevent the device from damages during over-load or shorted-circuit condition. This current is detected by an internal sensing transistor.

### Over-Temperature Protection

The over-temperature protection function will turn off the P-MOSFET when the junction temperature exceeds 150°C (typ.), and the output current exceeds 80mA. Once the junction temperature cools down by approximately 20°C, the regulator will automatically resume operation.

## Absolute Maximum Ratings (Note 1)

- VIN, VOUT, SNS, EN to GND ----- -0.3V to 6.5V
- VOUT to VIN ----- -6.5V to 0.3V
- Power Dissipation,  $P_D$  @  $T_A = 25^\circ\text{C}$ 
  - TSOT-23-5 ----- 0.43W
  - ZQFN-4L 1x1 (ZDFN-4L 1x1) ----- 0.44W
- Package Thermal Resistance (Note 2)
  - TSOT-23-5,  $\theta_{JA}$  ----- 230.6°C/W
  - TSOT-23-5,  $\theta_{JC}$  ----- 21.8°C/W
  - ZQFN-4L 1x1 (ZDFN-4L 1x1),  $\theta_{JA}$  ----- 226°C/W
  - ZQFN-4L 1x1 (ZDFN-4L 1x1),  $\theta_{JC}$  ----- 43°C/W
- Lead Temperature (Soldering, 10 sec.) ----- 260°C
- Junction Temperature ----- 150°C
- Storage Temperature Range ----- -65°C to 150°C
- ESD Susceptibility (Note 3)
  - HBM (Human Body Model) ----- 2kV

## Recommended Operating Conditions (Note 4)

- Input Voltage, VIN ----- 1.2V to 5.5V
- Junction Temperature Range ----- -40°C to 125°C
- Ambient Temperature Range ----- -40°C to 85°C

## Electrical Characteristics

( $V_{OUT} + 1 < V_{IN} < 5.5\text{V}$ ,  $T_A = 25^\circ\text{C}$ , unless otherwise specified)

| Parameter   | Symbol     | Test Conditions  | Min | Typ  | Max  | Unit          |
|---|------------|--|-----|------|------|---------------|
| Output Voltage Range                                      | $V_{OUT}$  |  | 0.8 | --   | 3.3  | V             |
| DC Output Accuracy  |            | $I_{LOAD} = 1\text{mA}$  | -2  | --   | 2    | %             |
| Dropout Voltage<br>( $I_{LOAD} = 600\text{mA}$ ) (Note 5) | $V_{DROP}$ | $0.8\text{V} \leq V_{OUT} < 1.05\text{V}$ (TSOT-23-5)                                    | --  | 1.05 | 1.33 | V             |
|   |            | $0.8\text{V} \leq V_{OUT} < 1.05\text{V}$ (ZQFN-4L 1x1)                                  | --  | 1.05 | 1.63 |               |
|   |            | $1.05\text{V} \leq V_{OUT} < 1.2\text{V}$  | --  | 0.8  | 1.13 |               |
|   |            | $1.2\text{V} \leq V_{OUT} < 1.5\text{V}$   | --  | 0.71 | 1.03 |               |
|   |            | $1.5\text{V} \leq V_{OUT} < 1.8\text{V}$   | --  | 0.57 | 0.93 |               |
|   |            | $1.8\text{V} \leq V_{OUT} < 2.1\text{V}$   | --  | 0.57 | 0.83 |               |
|   |            | $2.1\text{V} \leq V_{OUT} < 2.5\text{V}$   | --  | 0.41 | 0.73 |               |
|   |            | $2.5\text{V} \leq V_{OUT} < 3\text{V}$   | --  | 0.36 | 0.63 |               |
|   |            | $3\text{V} \leq V_{OUT}$   | --  | 0.31 | 0.53 |               |
| $V_{CC}$ Consumption Current                              | $I_Q$      | $I_{LOAD} = 0\text{mA}$ , $V_{OUT} \leq 5.5\text{V}$<br>$V_{IN} \geq V_{OUT} + V_{DROP}$ | --  | 2    | 4    | $\mu\text{A}$ |
| Shutdown GND Current<br>(Note 6)                          |            | $V_{EN} = 0\text{V}$   | --  | 0.1  | 0.5  | $\mu\text{A}$ |
| Shutdown Leakage Current<br>(Note 6)                      |            | $V_{EN} = 0\text{V}$ , $V_{OUT} = 0\text{V}$   | --  | 0.1  | 0.5  | $\mu\text{A}$ |

| Parameter                    | Symbol           | Test Conditions   | Min                           | Typ  | Max  | Unit |                   |
|------------------------------|------------------|---|-------------------------------|------|------|------|-------------------|
| EN Input Current             | I <sub>EN</sub>  | V <sub>EN</sub> = 5.5V  | --                            | --   | 0.1  | μA   |                   |
| Line Regulation              | ΔLINE            | I <sub>LOAD</sub> = 1mA   | 1.2V ≤ V <sub>IN</sub> < 1.5V | --   | 0.3  | 0.6  | %                 |
|                              |                  |   | 1.5V ≤ V <sub>IN</sub> < 1.8V | --   | 0.15 | 0.3  |                   |
|                              |                  |   | 1.8V ≤ V <sub>IN</sub> < 5.5V | --   | 0.13 | 0.35 |                   |
| Load Regulation              | ΔLOAD            | 1mA < I <sub>LOAD</sub> < 600mA   | --                            | 0.5  | 1    | %    |                   |
| Power Supply Rejection Ratio | PSRR             | V <sub>IN</sub> = 3V, I <sub>LOAD</sub> = 50mA, C <sub>OUT</sub> = 1μF, V <sub>OUT</sub> = 2.5V, f = 1kHz       | --                            | 75   | --   | dB   |                   |
| Output Voltage Noise         |                  | C <sub>OUT</sub> = 1μF, I <sub>LOAD</sub> = 150mA, BW = 10Hz to 100kHz, V <sub>IN</sub> = V <sub>OUT</sub> + 1V | V <sub>OUT</sub> = 0.8V       | --   | 26   | --   | μV <sub>RMS</sub> |
|                              |                  |   | V <sub>OUT</sub> = 1.2V       | --   | 37   | --   |                   |
|                              |                  |   | V <sub>OUT</sub> = 1.8V       | --   | 39   | --   |                   |
|                              |                  |   | V <sub>OUT</sub> = 3.3V       | --   | 42   | --   |                   |
| Output Current Limit         | I <sub>LIM</sub> | V <sub>OUT</sub> = 90%V <sub>OUT(Normal)</sub>  | 610                           | 1100 | --   | mA   |                   |
| Enable Input Voltage         | Logic-High       | V <sub>IH</sub>   | V <sub>IN</sub> = 5V          | 0.9  | --   | --   | V                 |
|                              | Logic-Low        | V <sub>IL</sub>   | V <sub>IN</sub> = 5V          | --   | --   | 0.4  |                   |
| Thermal Shutdown Temperature | T <sub>SD</sub>  | I <sub>LOAD</sub> = 30mA, V <sub>IN</sub> ≥ 1.5V  | --                            | 150  | --   | °C   |                   |
| Thermal Shutdown Hysteresis  | ΔT <sub>SD</sub> |   | --                            | 20   | --   | °C   |                   |
| Discharge Resistance         |                  | EN = 0V, V <sub>OUT</sub> = 0.1V  | --                            | 80   | --   | Ω    |                   |

**Note 1.** Stresses beyond those listed under “Absolute Maximum Ratings” may cause permanent damage to the device. These are stress ratings only, and functional operation of the device at these or any other conditions beyond those indicated in the operational sections of the specifications is not implied. Exposure to absolute maximum rating conditions may affect device reliability.

**Note 2.** θ<sub>JA</sub> is measured in the natural convection at T<sub>A</sub> = 25°C on a two-layer Richtek Evaluation Board for ZQFN-4L 1x1 (ZDFN-4L1x1) Package.  
θ<sub>JA</sub> is measured at T<sub>A</sub> = 25°C on a high effective thermal conductivity four-layer test board per JEDEC 51-7 for TSOT-23-5 Package.

**Note 3.** Devices are ESD sensitive. Handling precaution is recommended.

**Note 4.** The device is not guaranteed to function outside its operating conditions.

**Note 5.** The dropout voltage is defined as V<sub>IN</sub> – V<sub>OUT</sub>, when V<sub>OUT</sub> is 98% of the normal value of V<sub>OUT</sub>.

**Note 6.** The specification is tested at wafer stage and guarantee by design after assembly.

Typical Application Circuit

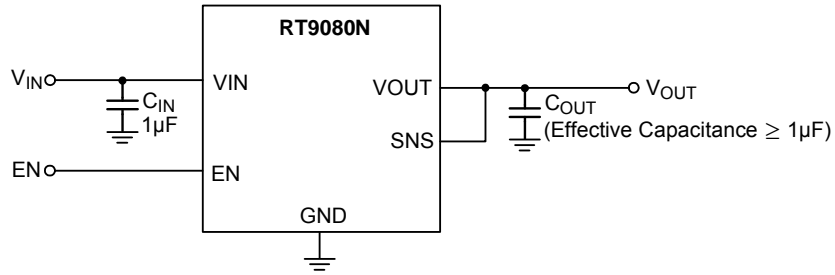


Figure 1. Application with Sense Function

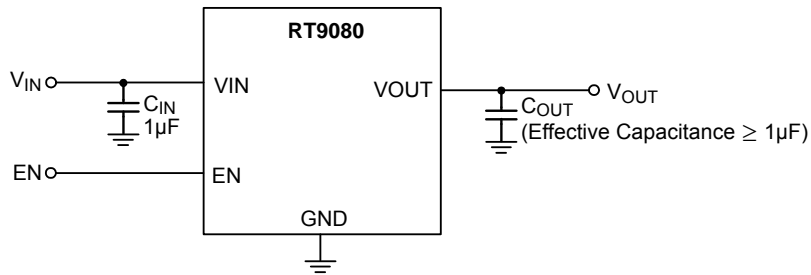


Figure 2. Application without Sense Function

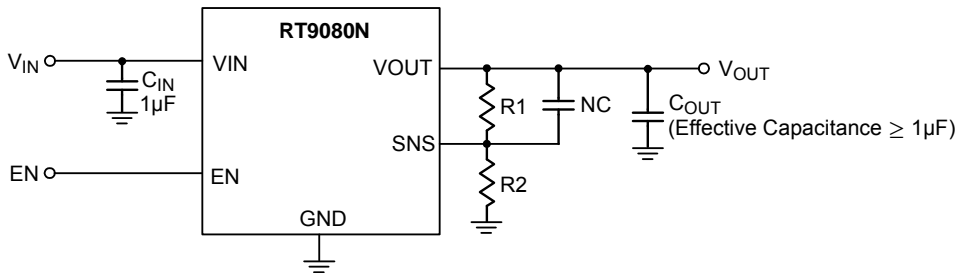
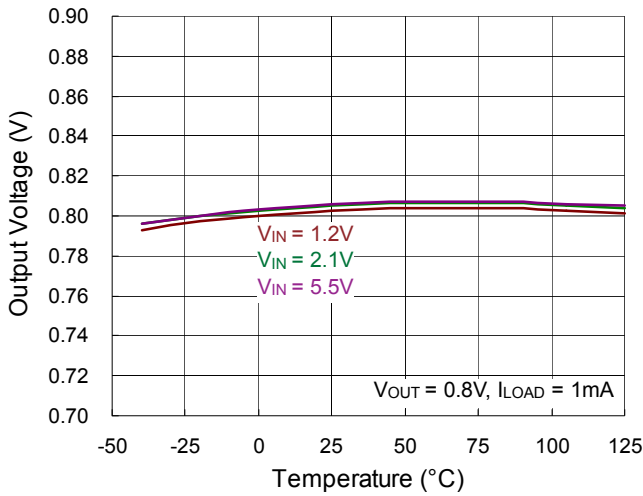


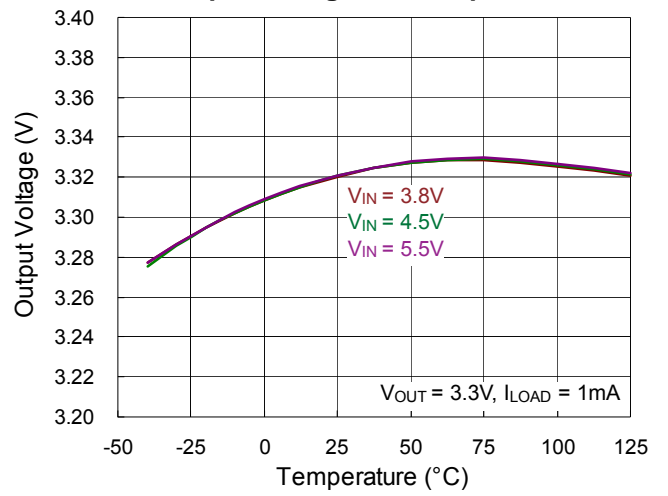
Figure 3. Adjustable Output Voltage Application Circuit

**Typical Operating Characteristics**

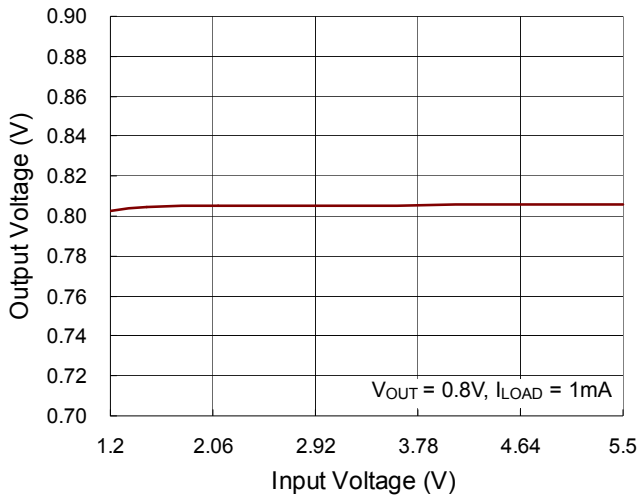
**Output Voltage vs. Temperature**



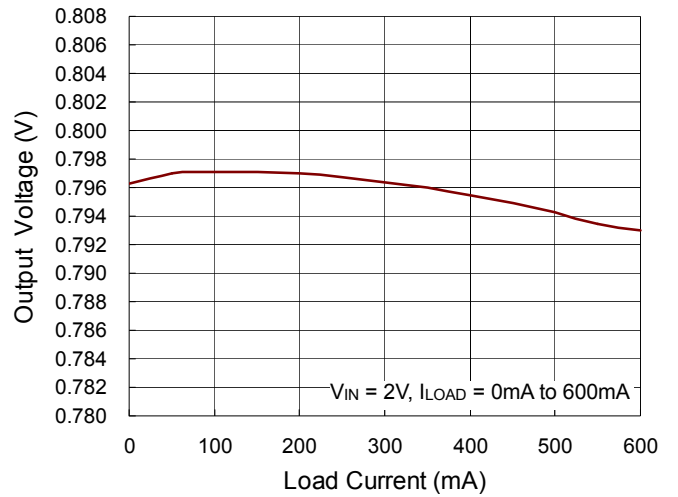
**Output Voltage vs. Temperature**



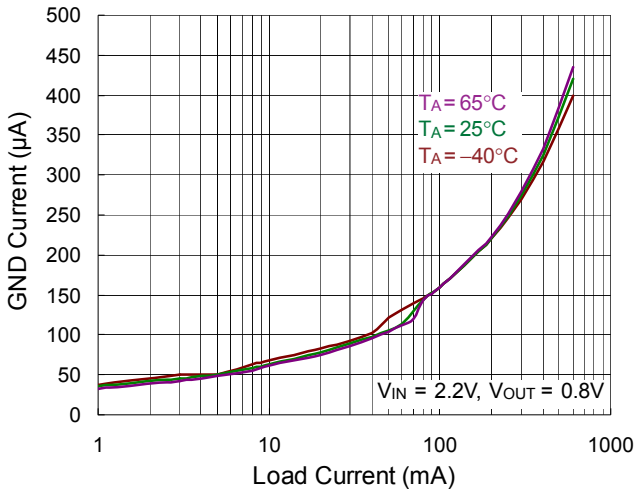
**Output Voltage vs. Input Voltage**



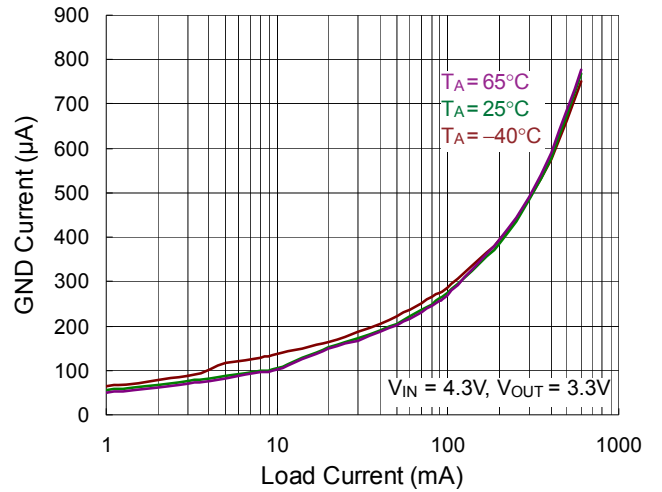
**Output Voltage vs. Load Current**



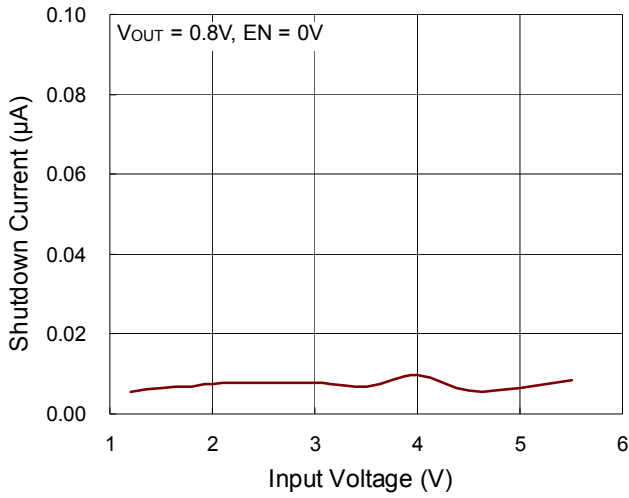
**Ground Current vs. Load Current**



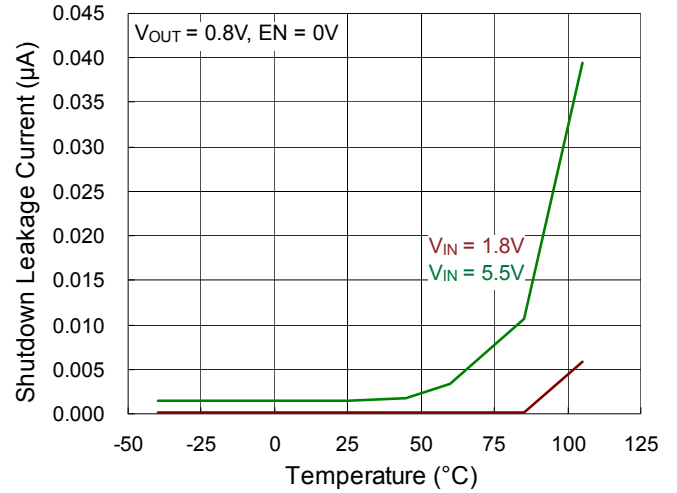
**Ground Current vs. Load Current**



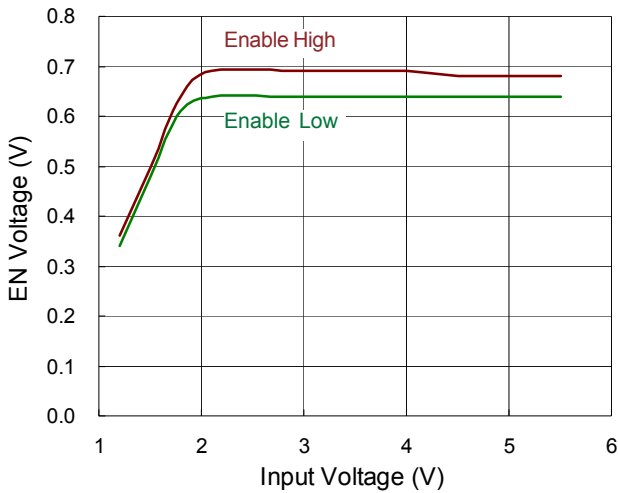
Shutdown Current vs. Input Voltage



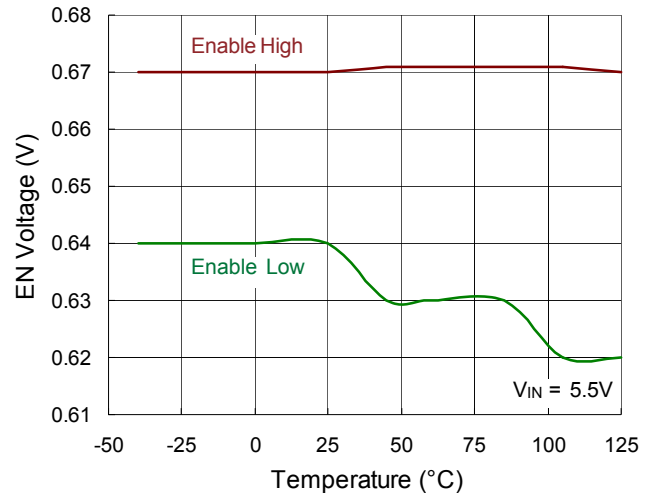
Shutdown Leakage Current vs. Temperature



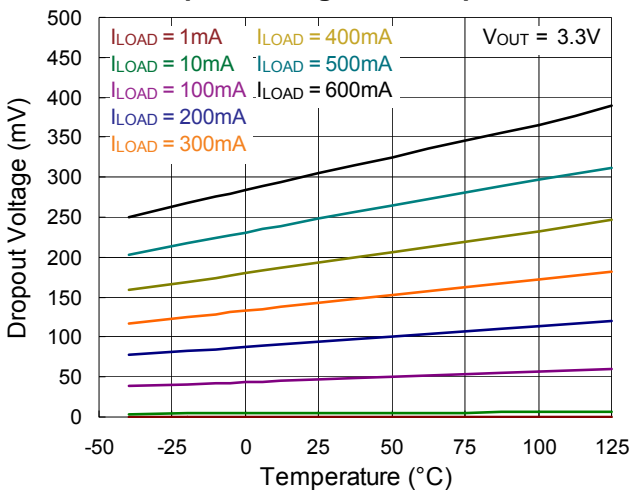
Enable Threshold vs. Input Voltage



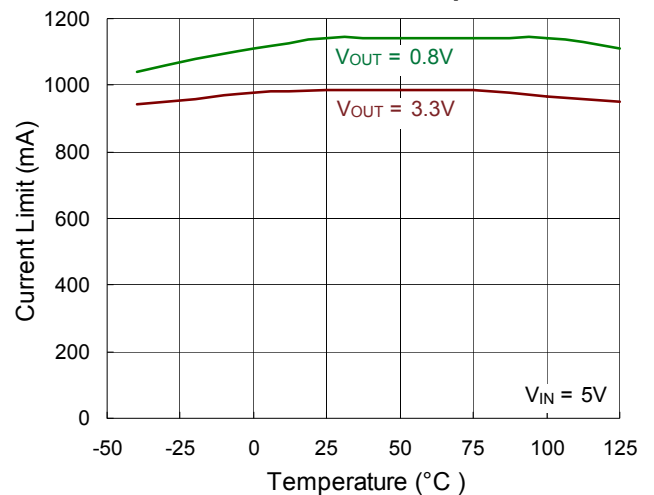
Enable Threshold vs. Temperature



Dropout Voltage vs. Temperature

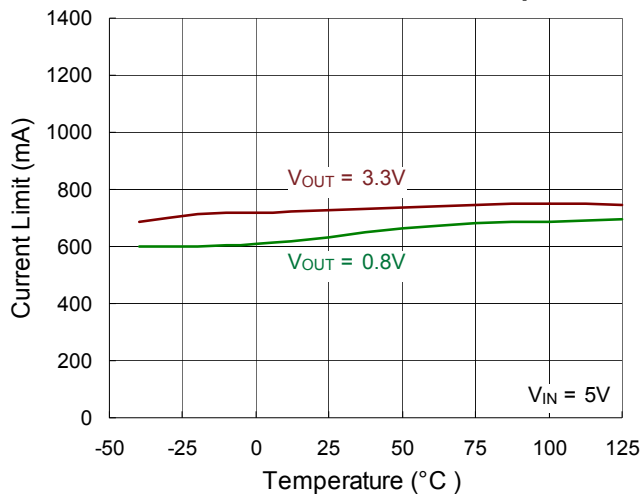


Current Limit vs. Temperature

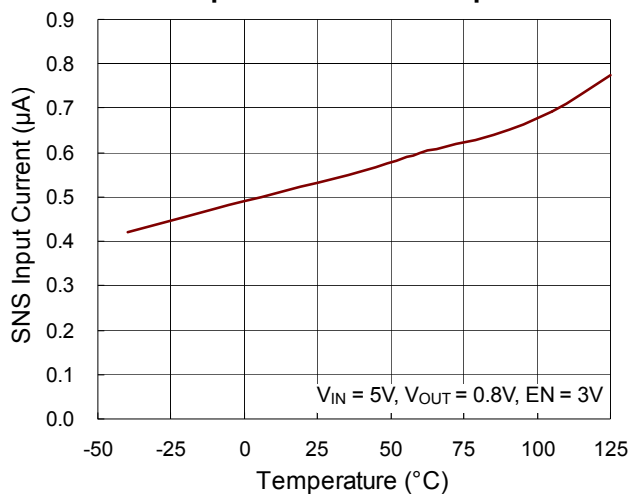




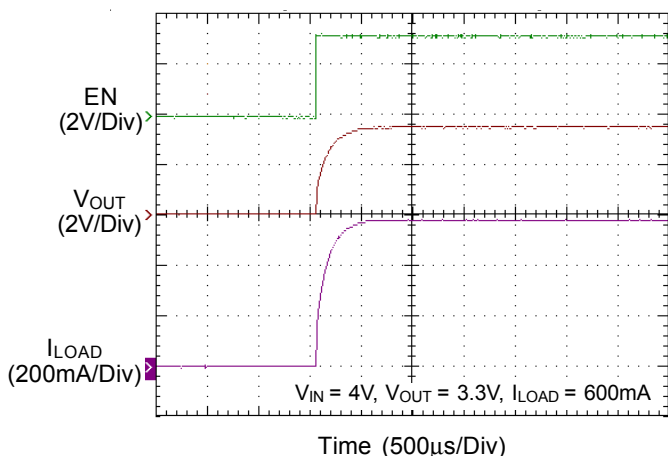
Fold-Back Current Limit vs. Temperature



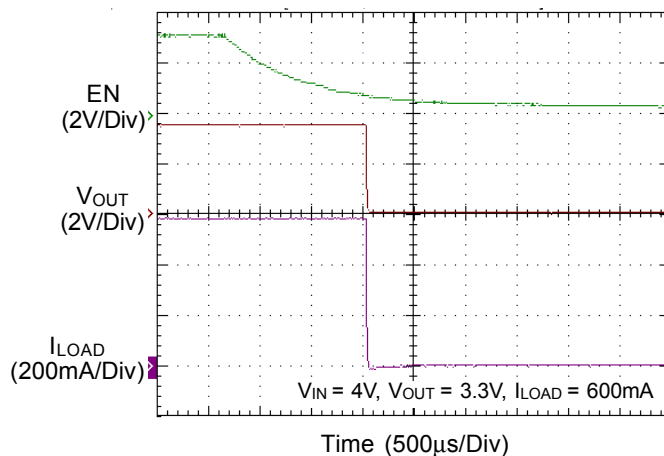
SNS Input Current vs. Temperature



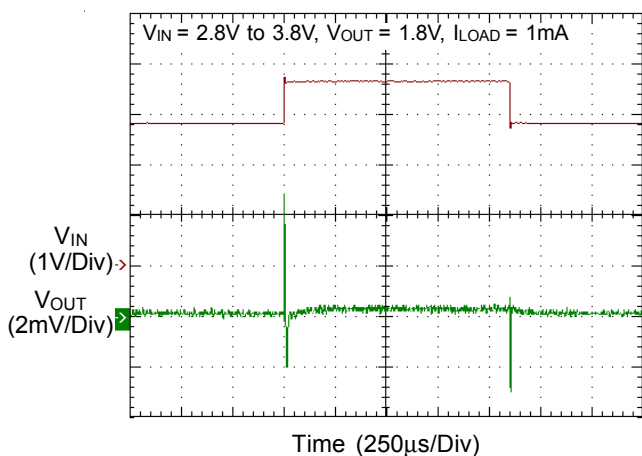
Power On from EN



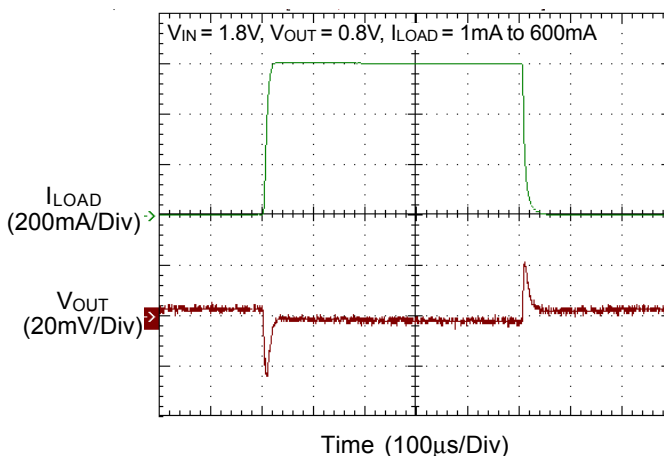
Power Off from EN

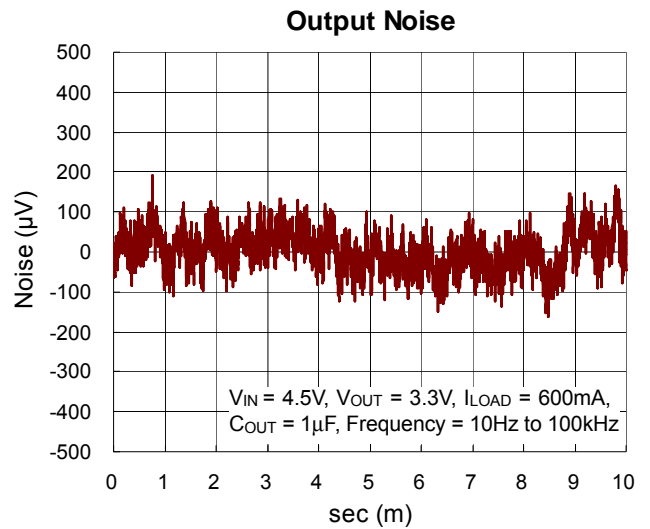
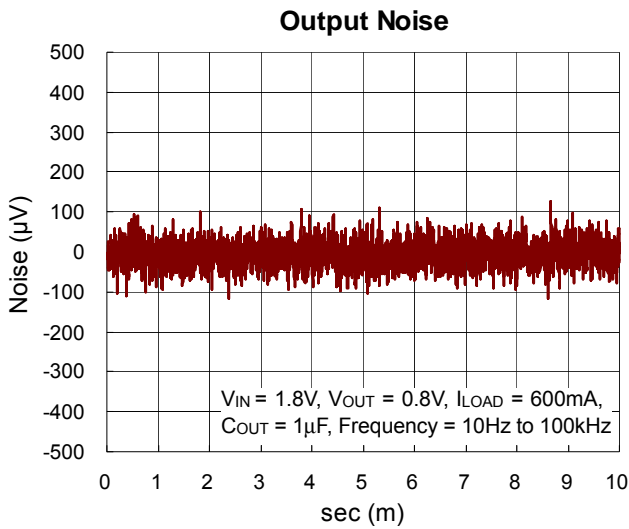
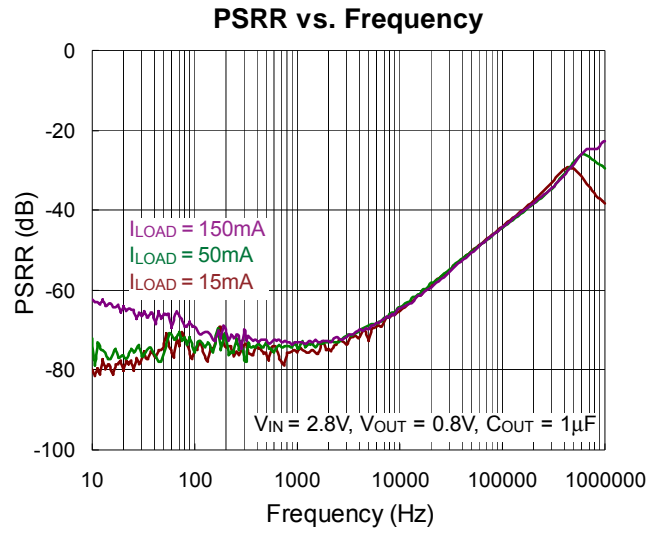
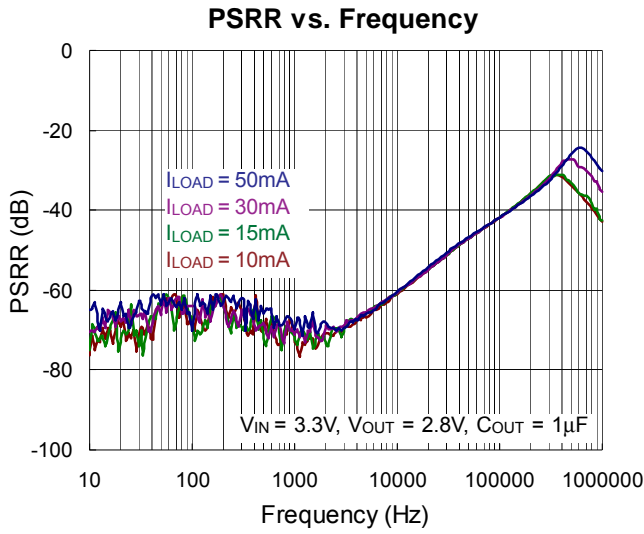


Line Transient



Load Transient





### Application Information

Like any low dropout linear regulator, the RT9080's external input and output capacitors must be properly selected for stability and performance. Use a 1μF or larger input capacitor and place it close to the IC's VIN and GND pins. Any output capacitor meeting the minimum 1mΩ ESR (Equivalent Series Resistance) and effective capacitance larger than 1μF requirement may be used. Place the output capacitor close to the IC's VOUT and GND pins. Increasing capacitance and decreasing ESR can improve the circuit's PSRR and line transient response.

#### Enable

The RT9080 has an EN pin to turn on or turn off the regulator, When the EN pin is in logic high, the regulator will be turned on. The shutdown current is almost 0μA typical. The EN pin may be directly tied to VIN to keep the part on. The Enable input is CMOS logic and cannot be left floating.

#### Adjustable Output Voltage Setting

Because of the small input current at the SNS pin, the RT9080N with SNS pin also can work as an adjustable output voltage LDO. Figure 3 gives the connections for the adjustable output voltage application. The resistor divider from VOUT to SNS sets the output voltage when in regulation.

The voltage on the SNS pin sets the output voltage and is determined by the values of R1 and R2. In order to keep a good temperature coefficient of output voltage, the values of R1 and R2 should be selected carefully to ignore the temperature coefficient of input current at the SNS pin. A current greater than 50μA in the resistor divider is recommended to meet the above requirement. The adjustable output voltage can be calculated using the formula given in equation 1 :

$$V_{OUT} = \frac{R1 + R2}{R2} \times V_{SNS} \tag{1}$$

where V<sub>SNS</sub> is determined by the output voltage selections in the ordering information of the RT9080N. The maximum adjustable output voltage can be as high as input voltage deducted by the dropout voltage.

When we choose 51kΩ and 16kΩ as R1 and R2 respectively, and select a 0.8V output at SNS pin, the

adjustable output voltage will be set to around 3.35V. Its temperature coefficient in Figure 4 is still perfect in such kind of application.

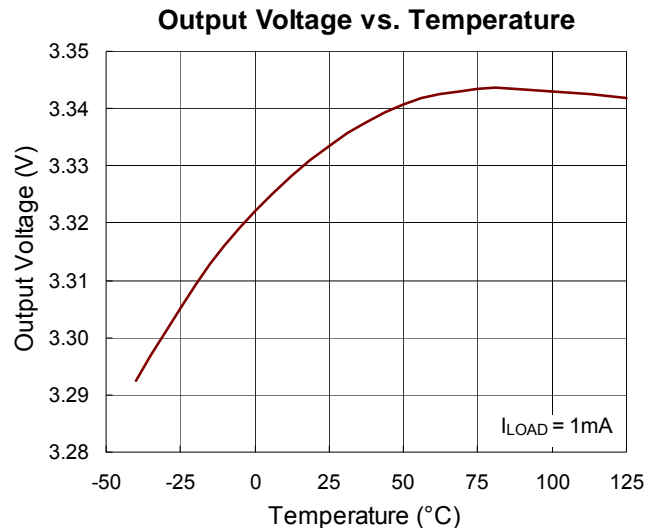


Figure 4. Temperature Coefficient of Adjustable Output Voltage

The minimum recommended 50μA in the resistor divider makes the application no longer an ultra low quiescent LDO. Figure 5 is another fine adjustable output voltage application can keep the LDO still operating in low power consumption. The fine tune range is recommended to be less than 50mV (R1 ≤ 91kΩ) in order to keep a good temperature coefficient of the output voltage.

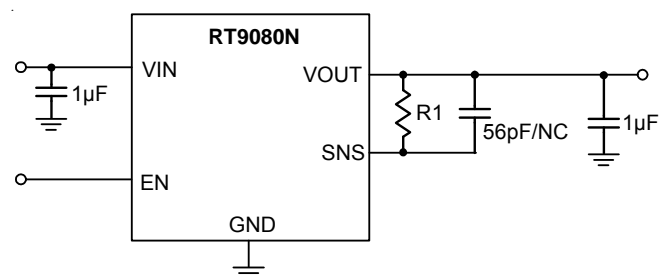


Figure 5. Fine Adjustable Output Voltage Application Circuit

There isn't extra current consumption in the above application. But the temperature coefficient of output voltage will be degraded by the input current at SNS pin. If the tuning range is larger than 50mV, a compensation capacitor (56pF) is required to keep the stability of output voltage. The fine adjustable output voltage is calculated using the formula given in equation2 :

$$V_{OUT} = V_{SNS} + I_{SNS} \times R1 \tag{2}$$

where  $I_{SNS}$  is the input Current at SNS pin (typical 550nA at room temperature) and  $V_{SNS}$  is determined by the output voltage selections in the ordering information of the RT9080N.

### Current Limit

The RT9080 contains an independent current limiter, which monitors and controls the pass transistor's gate voltage, limiting the output current to 1.1A (typ.). The current limiting level is reduced to around 0.6A named fold-back current limit when the output voltage is further decreased. The output can be shorted to ground indefinitely without damaging the part.

### Thermal Considerations

For continuous operation, do not exceed absolute maximum junction temperature. The maximum power dissipation depends on the thermal resistance of the IC package, PCB layout, rate of surrounding airflow, and difference between junction and ambient temperature. The maximum power dissipation can be calculated by the following formula :

$$P_{D(MAX)} = (T_{J(MAX)} - T_A) / \theta_{JA}$$

where  $T_{J(MAX)}$  is the maximum junction temperature,  $T_A$  is the ambient temperature, and  $\theta_{JA}$  is the junction to ambient thermal resistance.

For recommended operating condition specifications the maximum junction temperature is 125°C and  $T_A$  is the ambient temperature. The junction to ambient thermal resistance,  $\theta_{JA}$ , is layout dependent. For TSOT-23-5 package, the thermal resistance,  $\theta_{JA}$ , is 230.6°C/W on a standard JEDEC 51-7 four-layer thermal test board. For ZQFN-4L 1x1 (ZDFN-4L 1x1) package, the thermal resistance,  $\theta_{JA}$ , is 226°C/W on a two-layer Richtek evaluation board. The maximum power dissipation at  $T_A = 25^\circ\text{C}$  can be calculated by the following formula :

$$P_{D(MAX)} = (125^\circ\text{C} - 25^\circ\text{C}) / (230.6^\circ\text{C/W}) = 0.43\text{W for TSOT-23-5 package}$$

$$P_{D(MAX)} = (125^\circ\text{C} - 25^\circ\text{C}) / (226^\circ\text{C/W}) = 0.44\text{W for ZQFN-4L 1x1 (ZDFN-4L 1x1) package}$$

The maximum power dissipation depends on the operating ambient temperature for fixed  $T_{J(MAX)}$  and thermal resistance,  $\theta_{JA}$ . The derating curve in Figure 6 allows the designer to see the effect of rising ambient temperature on the maximum power dissipation.

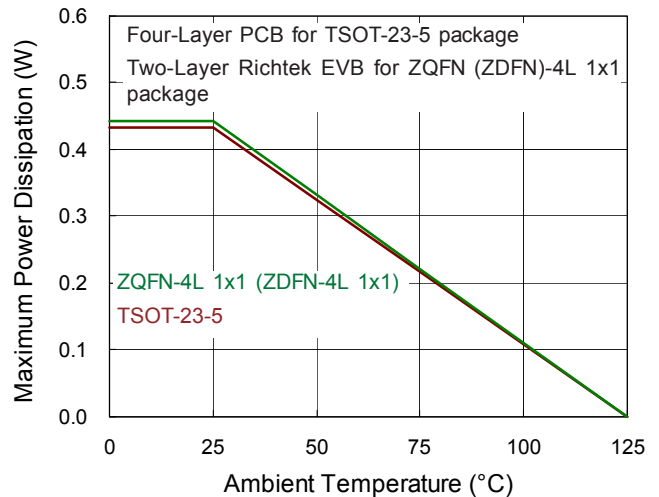
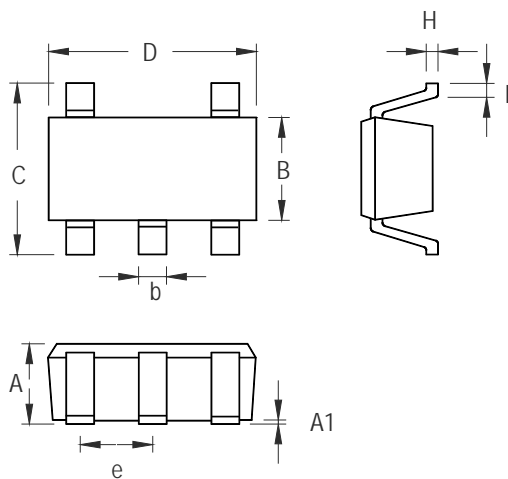


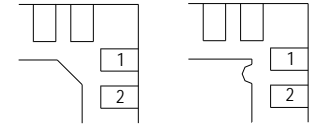
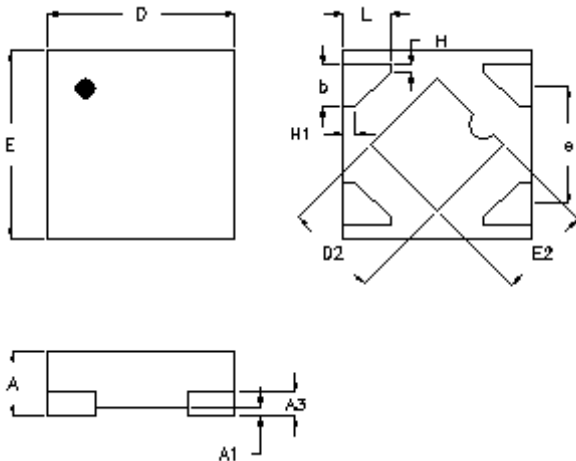
Figure 6. Derating Curve of Maximum Power Dissipation

**Outline Dimension**



| Symbol | Dimensions In Millimeters |       | Dimensions In Inches |       |
|--------|---------------------------|-------|----------------------|-------|
|        | Min                       | Max   | Min                  | Max   |
| A      | 0.700                     | 1.000 | 0.028                | 0.039 |
| A1     | 0.000                     | 0.100 | 0.000                | 0.004 |
| B      | 1.397                     | 1.803 | 0.055                | 0.071 |
| b      | 0.300                     | 0.559 | 0.012                | 0.022 |
| C      | 2.591                     | 3.000 | 0.102                | 0.118 |
| D      | 2.692                     | 3.099 | 0.106                | 0.122 |
| e      | 0.838                     | 1.041 | 0.033                | 0.041 |
| H      | 0.080                     | 0.254 | 0.003                | 0.010 |
| L      | 0.300                     | 0.610 | 0.012                | 0.024 |

**TSOT-23-5 Surface Mount Package**



**DETAILA**

Pin #1 ID and Tie Bar Mark Options

Note : The configuration of the Pin #1 identifier is optional, but must be located within the zone indicated.

| Symbol | Dimensions In Millimeters |       | Dimensions In Inches |       |
|--------|---------------------------|-------|----------------------|-------|
|        | Min.                      | Max.  | Min.                 | Max.  |
| A      | 0.300                     | 0.400 | 0.012                | 0.016 |
| A1     | 0.000                     | 0.050 | 0.000                | 0.002 |
| A3     | 0.117                     | 0.162 | 0.005                | 0.006 |
| b      | 0.175                     | 0.275 | 0.007                | 0.011 |
| D      | 0.900                     | 1.100 | 0.035                | 0.043 |
| D2     | 0.450                     | 0.550 | 0.018                | 0.022 |
| E      | 0.900                     | 1.100 | 0.035                | 0.043 |
| E2     | 0.450                     | 0.550 | 0.018                | 0.022 |
| e      | 0.625                     |       | 0.025                |       |
| L      | 0.200                     | 0.300 | 0.008                | 0.012 |
| H      | 0.039                     |       | 0.002                |       |
| H1     | 0.064                     |       | 0.003                |       |

**Z-Type 4L QFN 1x1 Package**

**Richtek Technology Corporation**

14F, No. 8, Tai Yuen 1<sup>st</sup> Street, Chupei City  
 Hsinchu, Taiwan, R.O.C.  
 Tel: (8863)5526789

Richtek products are sold by description only. Customers should obtain the latest relevant information and data sheets before placing orders and should verify that such information is current and complete. Richtek cannot assume responsibility for use of any circuitry other than circuitry entirely embodied in a Richtek product. Information furnished by Richtek is believed to be accurate and reliable. However, no responsibility is assumed by Richtek or its subsidiaries for its use; nor for any infringements of patents or other rights of third parties which may result from its use. No license is granted by implication or otherwise under any patent or patent rights of Richtek or its subsidiaries.

## X-ON Electronics

Largest Supplier of Electrical and Electronic Components

*Click to view similar products for [Linear Voltage Regulators](#) category:*

*Click to view products by [Richtek](#) manufacturer:*

Other Similar products are found below :

[LV56831P-E](#) [LV5684PVD-XH](#) [MCDTSA6-2R](#) [L7815ACV-DG](#) [PQ3DZ53U](#) [LV56801P-E](#) [TLE42794G](#) [L78L05CZ/1SX](#) [L78LR05DL-MA-E](#) [636416C](#) [714954EB](#) [BA033LBSG2-TR](#) [LV5680P-E](#) [L78M15CV-DG](#) [L79M05T-E](#) [TLS202A1MBVHTSA1](#) [L78LR05D-MA-E](#) [NCV317MBTG](#) [NTE7227](#) [LV5680NPVC-XH](#) [LT1054CN8](#) [MP2018GZD-5-Z](#) [MP2018GZD-33-Z](#) [MIC5281-3.3YMM](#) [MC78L06BP-AP](#) [TA48LS05F\(TE85L,F\)](#) [TA78L12F\(TE12L,F\)](#) [TC47BR5003ECT](#) [TCR2LN12,LF\(S](#) [TCR2LN28,LF\(S](#) [TCR2LN30,LF\(S](#) [TCR3DF295,LM\(CT](#) [TCR3DF40,LM\(CT](#) [BA178M20CP-E2](#) [L78M12ABDT](#) [LM7812SX/NOPB](#) [LR645N3-G-P003](#) [LR645N3-G-P013](#) [ZXTR2005P5-13](#) [SCD7812BTG](#) [TCR3DF335,LM\(CT](#) [ZXTR2012K-13](#) [TLE42994E V33](#) [ZXTR2008K-13](#) [ZXTR2005K-13](#) [L88R05DL-E](#) [ADP3300ARTZ-2.7RL7](#) [LM120K-15/883](#) [IFX54441LDVXUMA1](#) [LM317D2T-TR](#)