

NPS 2-T126

Power SMD Resistors



- Resistances from 0.025Ohm to 10kOhms
- Power Rating to 25Watt
- Resistance Tolerances to $\pm 1\%$
- TCR to $\pm 100\text{ppm}/^\circ\text{C}$
- Load Stability to 0.5%
- TO-126 Housing (D-Pak)
- Solder Reflow Secure at $260^\circ\text{C} / 20\text{s}$



SPECIFICATIONS

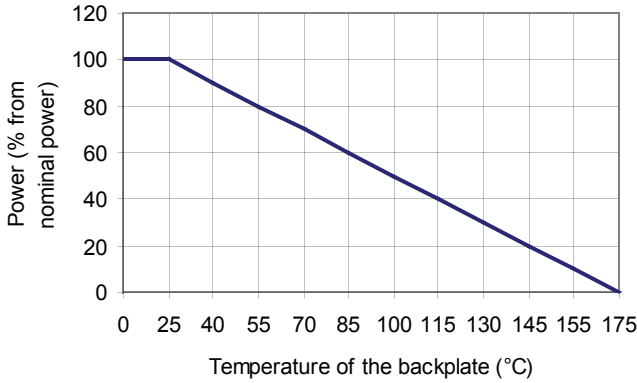
| Type | NPS 2-T126 | | | |
|---|--|-------------------------------------|-------------------------------------|-------------------------------------|
| Terminals | 2 | | | |
| Resistance Range | 0.025 to 0.049Ohms | 0.05 to 0.099Ohms | 0.1 to 0.99Ohms | 1Ohms to 10kOhms |
| Power Rating Heatsink | 25 W | | | |
| Power Rating Simple Pad | 0.6 W | | | |
| Thermal Resistance Rthj-c | 6.0 C / W | | | |
| Tolerances (others upon request) | 2% / 5% | | 1% / 2% / 5% | |
| Stability | 0.5% | | | |
| Temperature Coefficient (TCR 50ppm upon request) | $\pm 500\text{ ppm}/^\circ\text{C}$ | $\pm 400\text{ ppm}/^\circ\text{C}$ | $\pm 300\text{ ppm}/^\circ\text{C}$ | $\pm 100\text{ ppm}/^\circ\text{C}$ |
| Voltage Proof | 2.0 kV DC | | | |
| Operating Temperature | -40°C to 175°C | | | |
| Resistor Material | Thick Film | | | |
| Substrate | Al_2O_3 | | | |
| Housing | Epoxy | | | |
| Connector Material | Cu / Ni-flash / lead-free tinned | | | |
| Reflow soldering | lead-free soldering $260^\circ\text{C} / 20\text{s}$ | | | |

Ordering Information

Part Description: Part Type - Resistance - Tolerance
NPS 2-T126 1.1 Ohms 1%

SPECIFICATIONS (continued)

Derating

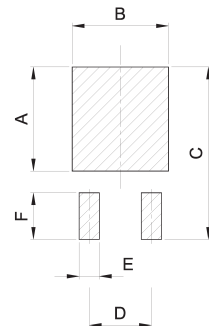
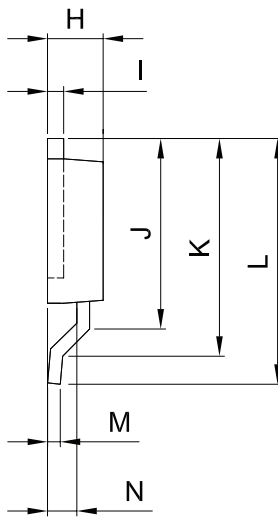
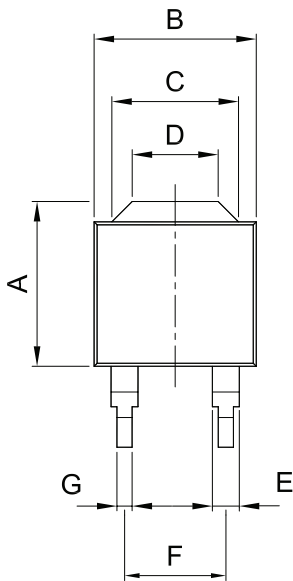


Power Rating Notes -
 The NPS Series Resistors must be attached to a suitable heat-sink. The maximum internal resistor temperature is 175°C. To specify an appropriate heatsink use the following formula :

$$R_{\theta H} = \frac{T_{MAX} - (P \times R_{\theta R}) - T_A}{P}$$

Where: $R_{\theta H}$ = Thermal Resistance of Heatsink (K/W)
 $R_{\theta R}$ = Thermal Resistance of Resistor (K/W)
 T_{MAX} = Maximum Temperature of Resistor
 T_A = Ambient Temperature of Heatsink (°C)
 P = Power Through Resistor (W)

Dimensions



| Dimension | mm | tol. (±mm) | inches | tol. (±inches) |
|-----------|-------|------------|--------|----------------|
| A | 8.26 | 0.2 | 0.33 | 0.008 |
| B | 8.13 | 0.2 | 0.32 | 0.008 |
| C | 6.35 | 0.1 | 0.25 | 0.004 |
| D | 4.31 | 0.1 | 0.17 | 0.004 |
| E | 1.35 | 0.1 | 0.05 | 0.004 |
| F | 5.08 | 0.1 | 0.20 | 0.004 |
| G | 0.76 | 0.1 | 0.03 | 0.004 |
| H | 2.79 | 0.1 | 0.11 | 0.004 |
| I | 0.8 | 0.1 | 0.03 | 0.004 |
| J | 9.55 | 0.2 | 0.38 | 0.008 |
| K | 10.92 | 0.2 | 0.43 | 0.008 |
| L | 12.32 | 0.2 | 0.49 | 0.008 |
| M | 0.6 | 0.1 | 0.02 | 0.004 |
| N | 1.47 | 0.1 | 0.06 | 0.004 |

| Dimension | mm | inches |
|-----------|------|--------|
| A | 8.51 | 0.335 |
| B | 7.87 | 0.310 |
| C | 14.1 | 0.555 |
| D | 5.08 | 0.200 |
| E | 1.65 | 0.065 |
| F | 3.81 | 0.150 |

X-ON Electronics

Largest Supplier of Electrical and Electronic Components

Click to view similar products for [riedon](#) manufacturer:

Other Similar products are found below :

[UAL25-0R1F](#) [UAL50-15RF](#) [UAL25-500RF](#) [UAL50-500RF](#) [SM10-10KX](#) [USR2G-20KX1](#) [UAL50-50RF8](#) [101-350RB](#) [UAL50-300RF8](#)
[UAL50-5RF](#) [101-5KX](#) [101-2K5B](#) [CSR2512C0R0005F](#) [UAL25-300RF8](#) [UAL50-16RF](#) [UB3C-4RF1](#) [RSB-500-100](#) [BR120-10RJ1](#) [BR120-25RJ1](#) [BR120-5RJ1](#) [BR120-15RJ1](#) [BRS300-100RJ1](#) [BR120-2RJ1](#) [101-250RX](#) [UAL50-100RF](#) [UAL50-6RF](#) [SM15-250RB](#) [HTE52-40KF](#)
[101-2K5X](#) [CSR2512C0R0015F](#) [UAL25-1KF](#) [UAL5-390RF8](#) [UAL50-50KF8](#) [UAL25-100RF8](#) [UAL50-0R1F](#) [UAL50-5KF](#) [PF2205-0R02J1](#)
[UAL50-330RF8](#) [RSN-100-50B](#) [101-250RB](#) [RSA-100-100-NB](#) [RSN-500-50B](#) [UAL25-750RF8](#) [RSA-20-100-NB](#) [RSN-50-50B](#) [RSN-5-100B](#)
[FPR2B-0R002F1](#) [USR2G-500RX1](#) [UAL50-12RF](#) [RSA-20-50](#)