

**Rittal – The System.**

Faster – better – everywhere.

# COMPACT ENCLOSURES AX

Technical details



ENCLOSURES

POWER DISTRIBUTION

CLIMATE CONTROL

IT INFRASTRUCTURE

SOFTWARE & SERVICES



FRIEDHELM LOH GROUP

# Compact enclosures

## Contents

### Compact enclosures AX, sheet steel

#### Basic enclosure AX

| Model No. AX | Width mm | Height mm | Depth mm | Cam lock | 3-point locking system | Page  |
|--------------|----------|-----------|----------|----------|------------------------|-------|
| 1031.000     | 380      | 300       | 210      | 1        | -                      | 4-5   |
| 1033.000     | 300      | 300       | 210      | 1        | -                      | 4-5   |
| 1034.000     | 300      | 400       | 210      | 1        | -                      | 4-5   |
| 1037.000     | 400      | 800       | 300      | 2        | -                      | 4-5   |
| 1038.000     | 380      | 600       | 210      | 2        | -                      | 4-5   |
| 1039.000     | 600      | 380       | 210      | 1        | -                      | 4-5   |
| 1045.000     | 400      | 500       | 210      | 2        | -                      | 4-5   |
| 1050.000     | 500      | 500       | 210      | 2        | -                      | 4-5   |
| 1054.000     | 600      | 600       | 250      | 2        | -                      | 4-5   |
| 1055.000     | 800      | 600       | 300      | 2        | -                      | 6-7   |
| 1057.000     | 500      | 700       | 250      | 2        | -                      | 4-5   |
| 1058.000     | 600      | 800       | 250      | 2        | -                      | 4-5   |
| 1059.000     | 600      | 800       | 400      | 2        | -                      | 4-5   |
| 1060.000     | 600      | 600       | 210      | 2        | -                      | 4-5   |
| 1073.000     | 760      | 760       | 300      | 2        | -                      | 6-7   |
| 1076.000     | 600      | 760       | 210      | 2        | -                      | 4-5   |
| 1077.000     | 760      | 760       | 210      | 2        | -                      | 6-7   |
| 1090.000     | 600      | 1000      | 250      | 2        | -                      | 4-5   |
| 1091.000     | 600      | 1000      | 400      | 2        | -                      | 4-5   |
| 1100.000     | 1000     | 760       | 210      | 2        | -                      | 12-13 |
| 1110.000     | 1000     | 1000      | 300      | 2        | -                      | 12-13 |
| 1114.000     | 1000     | 1,400     | 300      | -        | ■                      | 14-15 |
| 1115.000     | 1000     | 1,400     | 400      | -        | ■                      | 14-15 |
| 1116.000     | 1200     | 1200      | 400      | -        | ■                      | 14-15 |
| 1130.000     | 1000     | 760       | 300      | 2        | -                      | 12-13 |
| 1180.000     | 800      | 1000      | 300      | 2        | -                      | 6-7   |
| 1181.000     | 800      | 1000      | 400      | 2        | -                      | 6-7   |
| 1213.000     | 1000     | 1200      | 300      | -        | ■                      | 14-15 |
| 1214.000     | 1000     | 1200      | 400      | -        | ■                      | 14-15 |
| 1260.000     | 600      | 1200      | 300      | -        | ■                      | 8-9   |
| 1261.000     | 600      | 1200      | 400      | -        | ■                      | 8-9   |
| 1280.000     | 800      | 1200      | 300      | -        | ■                      | 10-11 |
| 1281.000     | 800      | 1200      | 400      | -        | ■                      | 10-11 |
| 1338.000     | 380      | 600       | 350      | 2        | -                      | 4-5   |
| 1339.000     | 600      | 380       | 350      | 1        | -                      | 4-5   |
| 1350.000     | 500      | 500       | 300      | 2        | -                      | 4-5   |
| 1360.000     | 600      | 600       | 350      | 2        | -                      | 4-5   |
| 1376.000     | 600      | 760       | 350      | 2        | -                      | 4-5   |
| 1380.000     | 380      | 380       | 210      | 1        | -                      | 4-5   |

#### Wall-mounted enclosure AX IT with 482.6 mm (19") mounting angles

| Model No. AX | Width mm | Height mm | Depth mm | Page |
|--------------|----------|-----------|----------|------|
| 7641.350     | 600      | 380       | 350      | 20   |
| 7643.350     | 600      | 600       | 350      | 20   |
| 7645.350     | 600      | 760       | 350      | 20   |
| 7646.400     | 600      | 800       | 400      | 20   |

#### Command panel AX with handle strips

| Model No. AX | Width mm | Height mm | Depth mm | Page |
|--------------|----------|-----------|----------|------|
| 6315.150     | 300      | 300       | 210      | 21   |
| 6315.250     | 380      | 300       | 210      | 21   |
| 6315.350     | 380      | 380       | 210      | 21   |
| 6315.450     | 500      | 500       | 210      | 21   |
| 6315.650     | 600      | 600       | 210      | 21   |
| 6320.050     | 300      | 200       | 155      | 22   |
| 6320.350     | 380      | 380       | 210      | 22   |
| 6320.450     | 500      | 500       | 210      | 22   |
| 6320.550     | 600      | 380       | 210      | 22   |
| 6320.650     | 600      | 600       | 210      | 22   |

#### Command panel AX for desktop TFT up to 24"

| Model No. AX | Width mm | Height mm | Depth mm | Page |
|--------------|----------|-----------|----------|------|
| 6321.050     | 650      | 450       | 155      | 23   |

### Compact enclosures AX, stainless steel

#### Basic enclosure AX

| Model No. AX | Width mm | Height mm | Depth mm | Cam lock | 3-point locking system | Page  |
|--------------|----------|-----------|----------|----------|------------------------|-------|
| 1003.000     | 300      | 300       | 210      | 1        | -                      | 16-17 |
| 1005.000     | 300      | 380       | 210      | 1        | -                      | 16-17 |
| 1006.000     | 380      | 380       | 210      | 1        | -                      | 16-17 |
| 1007.000     | 500      | 500       | 210      | 2        | -                      | 16-17 |
| 1008.000     | 380      | 600       | 210      | 2        | -                      | 16-17 |
| 1009.000     | 600      | 380       | 210      | 1        | -                      | 16-17 |
| 1010.000     | 600      | 600       | 210      | 2        | -                      | 16-17 |
| 1011.000     | 380      | 300       | 210      | 1        | -                      | 16-17 |
| 1012.000     | 600      | 760       | 210      | 2        | -                      | 16-17 |
| 1013.000     | 500      | 500       | 300      | 2        | -                      | 16-17 |

| Model No. AX | Width mm | Height mm | Depth mm | Cam lock | 3-point locking system | Page  |
|--------------|----------|-----------|----------|----------|------------------------|-------|
| 1014.000     | 760      | 760       | 300      | 2        | -                      | 16-17 |
| 1015.000     | 400      | 500       | 210      | 2        | -                      | 16-17 |
| 1016.000     | 800      | 1000      | 300      | 2        | -                      | 16-17 |
| 1017.000     | 800      | 1200      | 300      | -        | ■                      | 18    |
| 1018.000     | 1000     | 1000      | 300      | 2        | -                      | 19    |
| 1019.000     | 1000     | 1200      | 300      | -        | ■                      | 19    |
| 1302.000     | 300      | 380       | 210      | 1        | -                      | 16-17 |
| 1303.000     | 380      | 380       | 210      | 1        | -                      | 16-17 |
| 1304.000     | 600      | 600       | 210      | 2        | -                      | 16-17 |
| 1305.000     | 1000     | 1200      | 300      | -        | ■                      | 19    |

# Compact enclosures



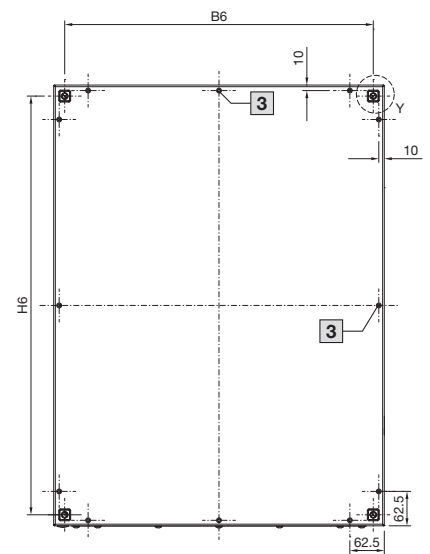
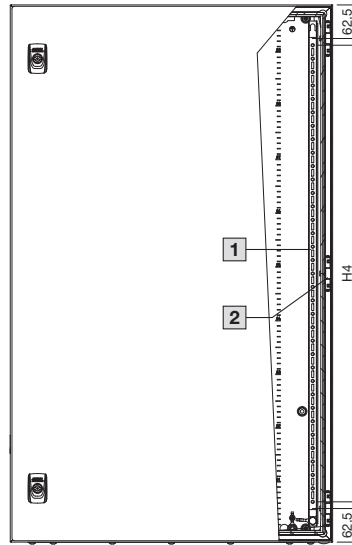
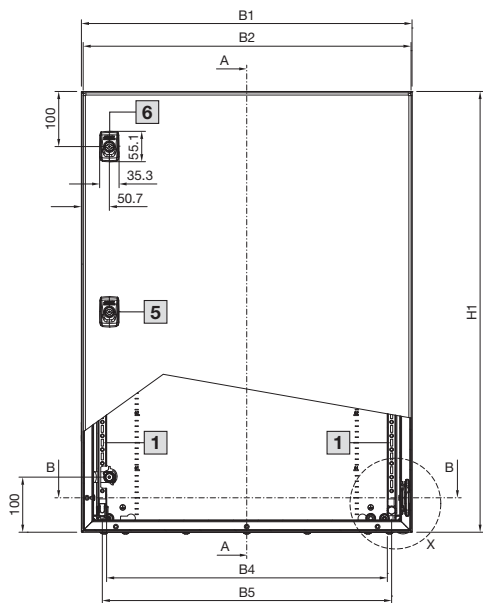
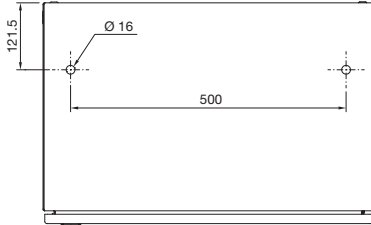
# Compact enclosures

## Compact enclosures AX, sheet steel

### Basic enclosure AX

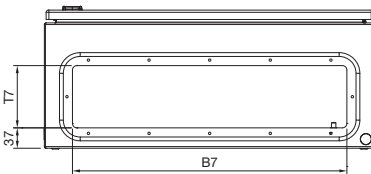
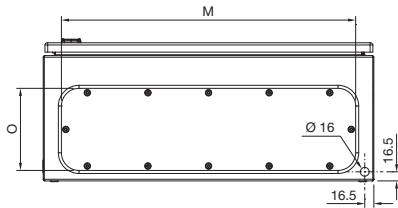
with cam lock and one gland plate

Drilled holes for eyebolts  
(only for 1059.000/1091.000)

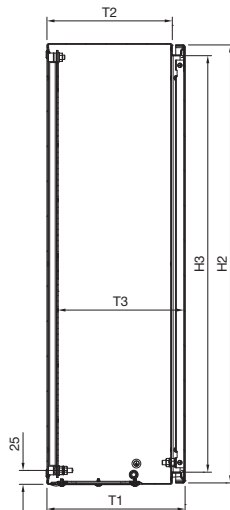
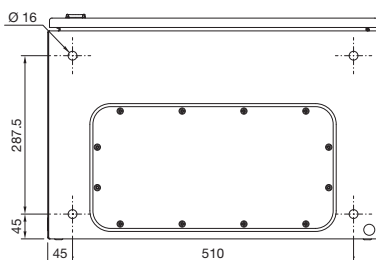


Section A - A

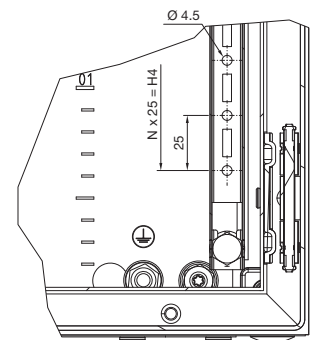
Section B - B



Drilled holes for base/plinth  
(only for 1059.000/1091.000)



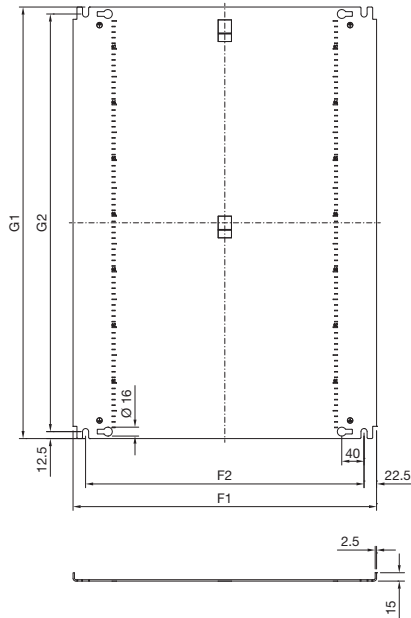
Detail X



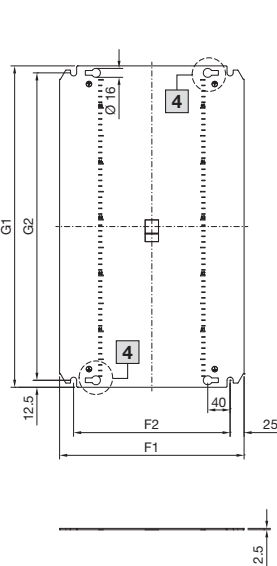
- 1 Door interior view
- 2 Central hinge, only where  $H1 > 800$  mm
- 3 Central embossed half-shear, only where  $B1/H1 \geq 500$  mm
- 4 Not applicable to  $B1 = 300$  mm
- 5 One central cam where  $H1 \leq 400$  mm
- 6 Two cams where  $H1 > 400$  mm

### Basic enclosure AX with cam lock and one gland plate

Mounting plate type 1,  
with edge fold



Mounting plate type 2,  
without edge fold



#### Enclosure

- B1 = Enclosure width (overall width)
- B2 = Door width
- B3 = Clearance width, enclosure opening
- B4 = Clearance width between door profile strips
- B5 = Mounting distance, door profile strips
- B6 = Mounting distance, enclosures
- B7 = Gland plate opening
- H1 = Enclosure height (overall height)
- H2 = Door height
- H3 = Clearance height, enclosure opening
- H4 = Overall height, 25 mm pitch pattern of holes
- H6 = Mounting distance, enclosures
- N = No. of 25 mm pitch patterns of holes
- T1 = Overall depth
- T2 = Enclosure depth
- T3 = Installation depth (distance from inside of door to mounting plate)
- T7 = Gland plate opening

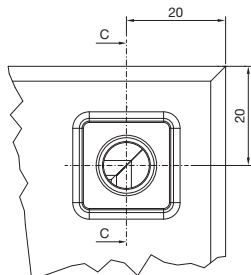
#### Mounting plate

- F1 = Mounting plate width
- F2 = Centre-to-centre spacing of the attachment holes
- G1 = Mounting plate height
- G2 = Centre-to-centre spacing of the attachment holes

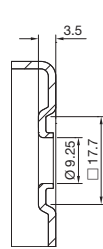
#### Gland plate

- M = Gland plate width
- O = Gland plate depth
- Type = Size of gland plate

Detail Y



Section C - C



| ModeNo.<br>AX | Width dimensions<br>mm |     |       |       |     |     |     | Height dimensions<br>mm |     |       |     |     |    |       | Depth dimensions<br>mm |       |     |     | Mounting plate<br>mm |     |     |      |     | Gland plate mm |      |  |
|---------------|------------------------|-----|-------|-------|-----|-----|-----|-------------------------|-----|-------|-----|-----|----|-------|------------------------|-------|-----|-----|----------------------|-----|-----|------|-----|----------------|------|--|
|               | B1                     | B2  | B3    | B4    | B5  | B6  | B7  | H1                      | H2  | H3    | H4  | H6  | N  | T1    | T2                     | T3    | T7  | F1  | F2                   | G1  | G2  | Type | M   | O              | Type |  |
| 1031.000      | 380                    | 374 | 332.7 | 289.5 | 305 | 340 | 303 | 300                     | 294 | 256.5 | 150 | 260 | 6  | 209.7 | 187.0                  | 189.0 | 113 | 330 | 280                  | 275 | 250 | 2    | 339 | 149            | 2    |  |
| 1033.000      | 300                    | 294 | 252.7 | 209.5 | 225 | 260 | 220 | 300                     | 294 | 256.5 | 150 | 260 | 6  | 209.7 | 187.0                  | 189.0 | 113 | 250 | 200                  | 275 | 250 | 2    | 256 | 149            | 1    |  |
| 1034.000      | 300                    | 294 | 252.7 | 209.5 | 225 | 260 | 220 | 400                     | 394 | 356.5 | 250 | 360 | 10 | 209.7 | 187.0                  | 189.0 | 113 | 250 | 200                  | 375 | 350 | 2    | 256 | 149            | 1    |  |
| 1037.000      | 400                    | 395 | 352.2 | 309.5 | 325 | 360 | 265 | 800                     | 795 | 756   | 650 | 760 | 26 | 300.7 | 277.5                  | 278.7 | 185 | 345 | 300                  | 775 | 750 | 1    | 301 | 221            | 5    |  |
| 1038.000      | 380                    | 374 | 332.7 | 289.5 | 305 | 340 | 303 | 600                     | 594 | 556.5 | 450 | 560 | 18 | 209.7 | 187.0                  | 188.5 | 113 | 330 | 280                  | 575 | 550 | 2    | 339 | 149            | 2    |  |
| 1039.000      | 600                    | 594 | 552.7 | 509.5 | 525 | 560 | 498 | 380                     | 374 | 336.5 | 250 | 340 | 10 | 209.7 | 187.0                  | 188.5 | 113 | 550 | 500                  | 355 | 330 | 2    | 534 | 149            | 4    |  |
| 1045.000      | 400                    | 394 | 352.7 | 309.5 | 325 | 360 | 303 | 500                     | 494 | 456.5 | 350 | 460 | 14 | 209.7 | 187.0                  | 189.0 | 113 | 350 | 300                  | 475 | 450 | 2    | 339 | 149            | 2    |  |
| 1050.000      | 500                    | 494 | 452.7 | 409.5 | 425 | 460 | 411 | 500                     | 494 | 456.5 | 350 | 460 | 14 | 209.7 | 187.0                  | 188.5 | 113 | 450 | 400                  | 475 | 450 | 2    | 447 | 149            | 3    |  |
| 1054.000      | 600                    | 594 | 552.2 | 509.5 | 525 | 560 | 498 | 600                     | 594 | 556   | 450 | 560 | 18 | 250.2 | 227.5                  | 228.7 | 113 | 550 | 500                  | 575 | 550 | 2    | 534 | 149            | 4    |  |
| 1057.000      | 500                    | 495 | 452.2 | 409.5 | 425 | 460 | 411 | 700                     | 695 | 656   | 550 | 660 | 22 | 250.7 | 227.5                  | 228.7 | 113 | 450 | 400                  | 675 | 650 | 2    | 447 | 149            | 3    |  |
| 1058.000      | 600                    | 595 | 552.2 | 509.5 | 525 | 560 | 498 | 800                     | 795 | 756   | 650 | 760 | 26 | 250.7 | 227.5                  | 228.7 | 113 | 545 | 500                  | 775 | 750 | 1    | 534 | 149            | 4    |  |
| 1059.000      | 600                    | 595 | 552.2 | 509.5 | 525 | 560 | 400 | 800                     | 795 | 756   | 650 | 760 | 26 | 400.7 | 377.5                  | 378.7 | 185 | 545 | 500                  | 775 | 750 | 1    | 436 | 221            | 7    |  |
| 1060.000      | 600                    | 594 | 552.2 | 509.5 | 525 | 560 | 498 | 600                     | 594 | 556   | 450 | 560 | 18 | 210.2 | 187.5                  | 188.7 | 113 | 550 | 500                  | 575 | 550 | 2    | 534 | 149            | 4    |  |
| 1076.000      | 600                    | 595 | 552.2 | 509.5 | 525 | 560 | 498 | 760                     | 755 | 716   | 600 | 720 | 24 | 210.7 | 187.5                  | 188.7 | 113 | 550 | 500                  | 735 | 710 | 2    | 534 | 149            | 4    |  |
| 1090.000      | 600                    | 595 | 552.2 | 509.5 | 525 | 560 | 498 | 1000                    | 995 | 956   | 850 | 960 | 34 | 250.7 | 227.5                  | 228.7 | 113 | 545 | 500                  | 975 | 950 | 1    | 534 | 149            | 4    |  |
| 1091.000      | 600                    | 595 | 552.2 | 509.5 | 525 | 560 | 400 | 1000                    | 995 | 956   | 850 | 960 | 34 | 400.7 | 377.5                  | 378.7 | 185 | 545 | 500                  | 975 | 950 | 1    | 436 | 221            | 7    |  |
| 1338.000      | 380                    | 374 | 332.2 | 289.5 | 305 | 340 | 265 | 600                     | 594 | 556.5 | 450 | 560 | 18 | 350.2 | 327.5                  | 328.7 | 185 | 330 | 280                  | 575 | 550 | 2    | 301 | 221            | 5    |  |
| 1339.000      | 600                    | 594 | 552.2 | 509.5 | 525 | 560 | 400 | 380                     | 374 | 336   | 250 | 340 | 10 | 350.2 | 327.5                  | 328.7 | 185 | 550 | 500                  | 355 | 330 | 2    | 436 | 221            | 7    |  |
| 1350.000      | 500                    | 494 | 452.2 | 409.5 | 425 | 460 | 365 | 500                     | 494 | 456   | 350 | 460 | 14 | 300.2 | 277.5                  | 278.7 | 185 | 450 | 400                  | 475 | 450 | 2    | 401 | 221            | 6    |  |
| 1360.000      | 600                    | 594 | 552.2 | 509.5 | 525 | 560 | 400 | 600                     | 594 | 556   | 450 | 560 | 18 | 350.2 | 327.5                  | 328.7 | 185 | 550 | 500                  | 575 | 550 | 2    | 436 | 221            | 7    |  |
| 1376.000      | 600                    | 595 | 552.2 | 509.5 | 525 | 560 | 400 | 760                     | 755 | 716   | 600 | 720 | 24 | 350.7 | 327.5                  | 328.7 | 185 | 550 | 500                  | 735 | 710 | 2    | 436 | 221            | 7    |  |
| 1380.000      | 380                    | 374 | 332.7 | 289.5 | 305 | 340 | 303 | 380                     | 374 | 336.5 | 250 | 340 | 10 | 209.7 | 187.0                  | 189.0 | 113 | 330 | 280                  | 355 | 330 | 2    | 339 | 149            | 2    |  |

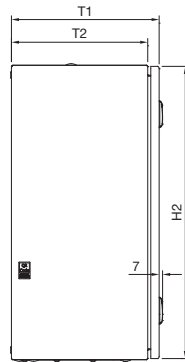
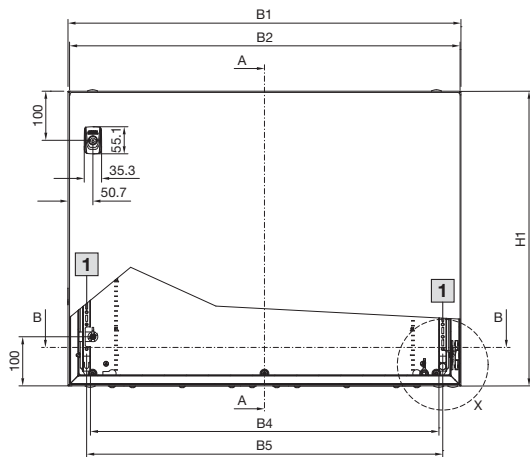
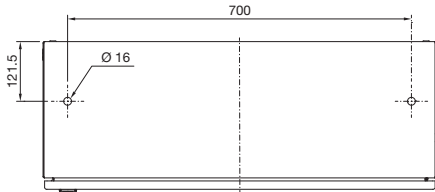
# Compact enclosures

## Compact enclosures AX, sheet steel

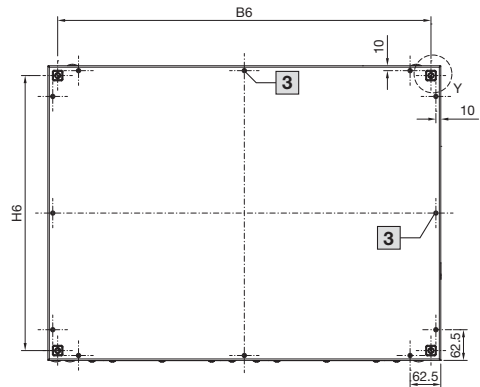
### Basic enclosure AX

with cam lock and two gland plates

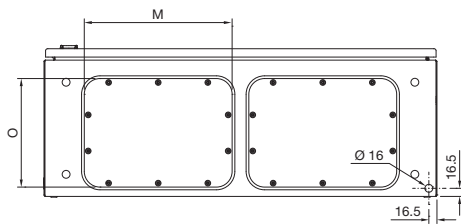
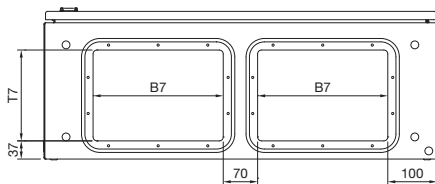
Drilled holes for eyebolts  
(only for 1055.000/1180.000/1181.000)



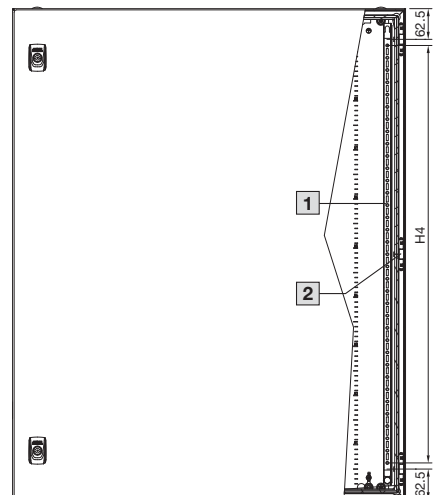
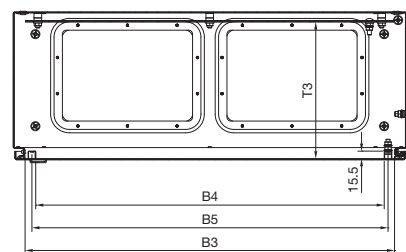
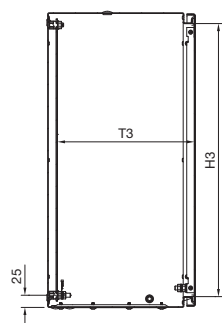
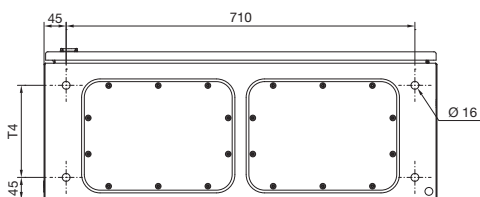
Section A - A



Section B - B



Drilled holes for base/plinth  
(only for 1055.000/1180.000/1181.000)



- 1 Door interior view
- 2 Central hinge, only where  $H1 > 800$  mm
- 3 Central embossed half-shear, only where  $B1/H1 \geq 500$  mm
- 4 Not applicable to  $B1 = 300$  mm

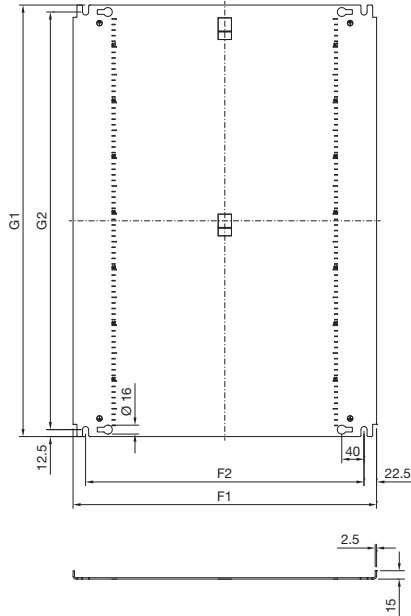
# Compact enclosures

## Compact enclosures AX, sheet steel

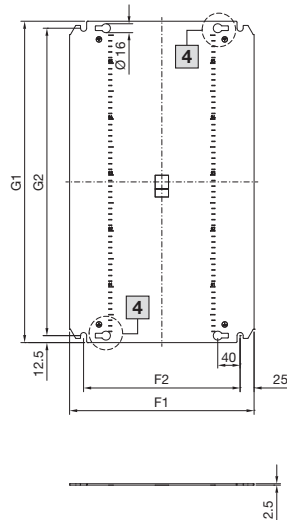
### Basic enclosure AX

with cam lock and two gland plates

Mounting plate type 1,  
with edge fold



Mounting plate type 2,  
without edge fold



#### Enclosure

- B1 = Enclosure width (overall width)
- B2 = Door width
- B3 = Clearance width, enclosure opening
- B4 = Clearance width between door profile strips
- B5 = Mounting distance, door profile strips
- B6 = Mounting distance, enclosures
- B7 = Gland plate opening
- H1 = Enclosure height (overall height)
- H2 = Door height
- H3 = Clearance height, enclosure opening
- H4 = Overall height, 25 mm pitch pattern of holes
- H5 = Mounting distance, enclosures
- N = No. of 25 mm pitch patterns of holes
- T1 = Overall depth
- T2 = Enclosure depth
- T3 = Installation depth (distance from inside of door to mounting plate)
- T4 = Spacing between holes for base/plinth
- T7 = Gland plate opening

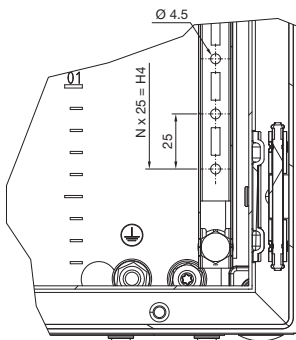
#### Mounting plate

- F1 = Mounting plate width
- F2 = Centre-to-centre spacing of the attachment holes
- G1 = Mounting plate height
- G2 = Centre-to-centre spacing of the attachment holes

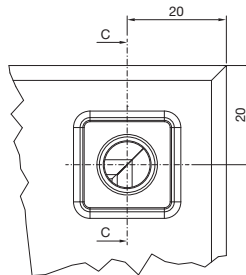
#### Gland plate

- M = Gland plate width
- O = Gland plate depth
- Type = Size of gland plate

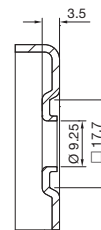
Detail X



Detail Y



Section C - C



| Model No.<br>AX | Width dimensions<br>mm |     |       |       |     |     |     | Height dimensions<br>mm |     |     |     |     |    | Depth dimensions<br>mm |       |       |       |     | Mounting plate<br>mm |     |     |     | Gland plate<br>mm |     |     |      |
|-----------------|------------------------|-----|-------|-------|-----|-----|-----|-------------------------|-----|-----|-----|-----|----|------------------------|-------|-------|-------|-----|----------------------|-----|-----|-----|-------------------|-----|-----|------|
|                 | B1                     | B2  | B3    | B4    | B5  | B6  | B7  | H1                      | H2  | H3  | H4  | H6  | N  | T1                     | T2    | T3    | T4    | T7  | F1                   | F2  | G1  | G2  | Type              | M   | O   | Type |
| 1055.000        | 800                    | 795 | 752.2 | 709.5 | 725 | 760 | 265 | 600                     | 595 | 556 | 450 | 560 | 18 | 300.7                  | 277.5 | 278.7 | 187.5 | 185 | 750                  | 700 | 575 | 550 | 2                 | 301 | 221 | 5    |
| 1073.000        | 760                    | 755 | 712.2 | 669.5 | 685 | 720 | 265 | 760                     | 755 | 716 | 600 | 720 | 24 | 300.7                  | 277.5 | 278.7 | -     | 185 | 705                  | 660 | 735 | 710 | 1                 | 301 | 221 | 5    |
| 1077.000        | 760                    | 755 | 712.2 | 669.5 | 685 | 720 | 303 | 760                     | 755 | 716 | 600 | 720 | 24 | 210.7                  | 187.5 | 188.7 | -     | 113 | 705                  | 660 | 735 | 710 | 1                 | 339 | 149 | 2    |
| 1180.000        | 800                    | 795 | 752.2 | 709.5 | 725 | 760 | 265 | 1000                    | 995 | 956 | 850 | 960 | 34 | 300.7                  | 277.5 | 278.7 | 187.5 | 185 | 745                  | 700 | 975 | 950 | 1                 | 301 | 221 | 5    |
| 1181.000        | 800                    | 795 | 752.2 | 709.5 | 725 | 760 | 265 | 1000                    | 995 | 956 | 850 | 960 | 34 | 400.7                  | 377.5 | 378.7 | 287.5 | 185 | 745                  | 700 | 975 | 950 | 1                 | 301 | 221 | 5    |

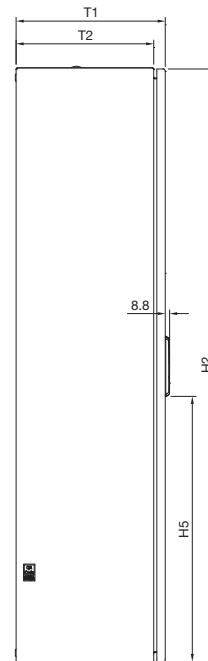
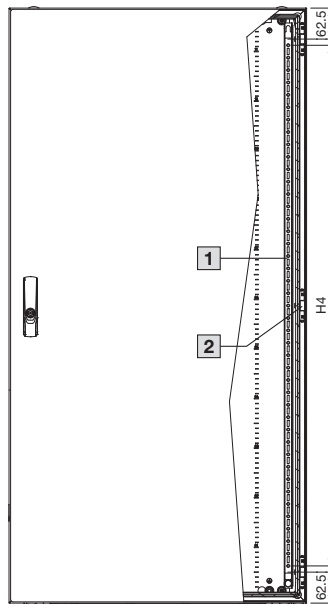
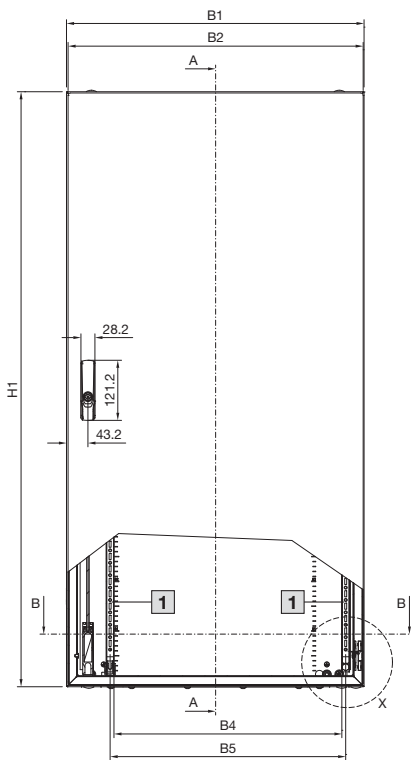
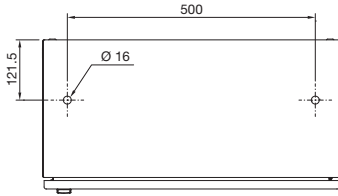
# Compact enclosures

## Compact enclosures AX, sheet steel

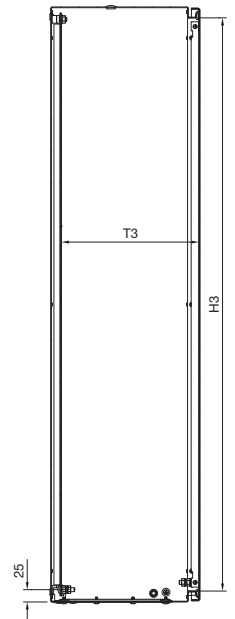
### Basic enclosure AX

with 3-point locking system and one gland plate

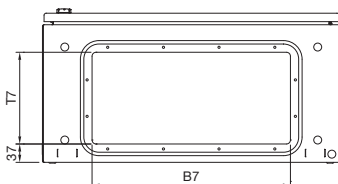
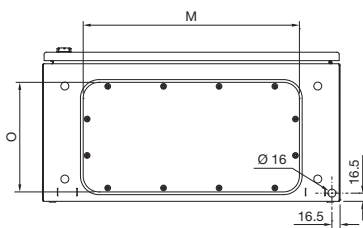
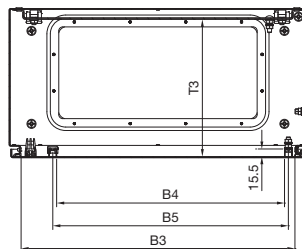
Drilled holes for eyebolts



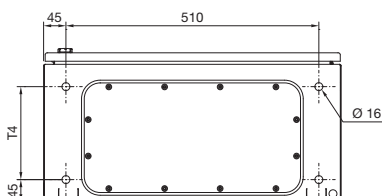
Section A - A



Section B - B



Drilled holes for base/plinth



- 1 Door interior view
- 2 Central hinge, only where  $H1 > 800$  mm
- 3 Central embossed half-shear, only where  $B1/H1 \geq 500$  mm

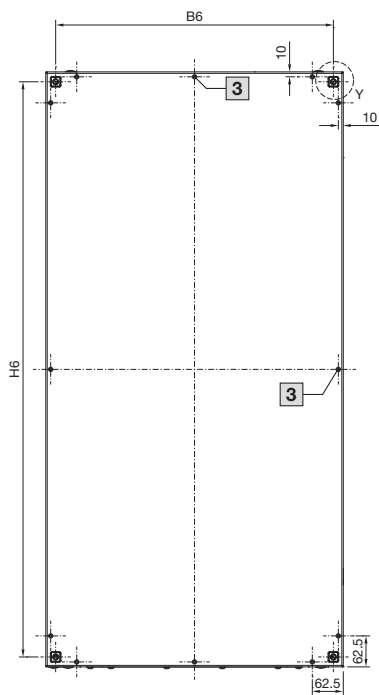


# Compact enclosures

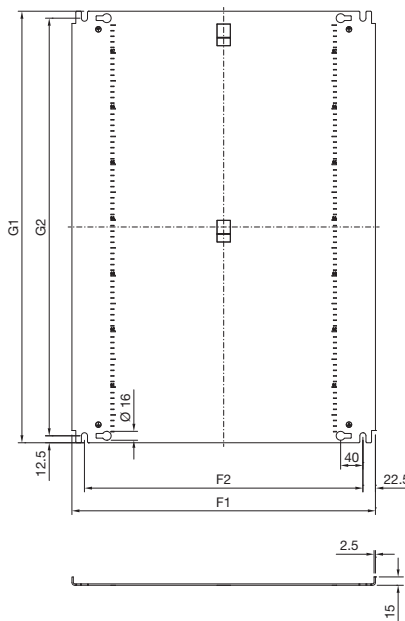
## Compact enclosures AX, sheet steel

### Basic enclosure AX

with 3-point locking system and one gland plate



Mounting plate type 1, with edge fold



#### Enclosure

- B1 = Enclosure width (overall width)
- B2 = Door width
- B3 = Clearance width, enclosure opening
- B4 = Clearance width between door profile strips
- B5 = Mounting distance, door profile strips
- B6 = Mounting distance, enclosures
- B7 = Gland plate opening
- H1 = Enclosure height (overall height)
- H2 = Door height
- H3 = Clearance height, enclosure opening
- H4 = Overall height, 25 mm pitch pattern of holes
- H5 = Distance from bottom edge of door to bottom edge of lock plate
- H6 = Mounting distance, enclosures
- N = No. of 25 mm pitch patterns of holes

- T1 = Overall depth
- T2 = Enclosure depth
- T3 = Installation depth (distance from inside of door to mounting plate)
- T4 = Spacing between holes for base/plinth
- T7 = Gland plate opening

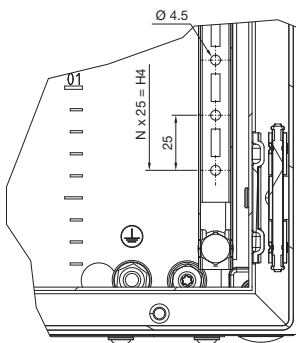
#### Mounting plate

- F1 = Mounting plate width
- F2 = Centre-to-centre spacing of the attachment holes
- G1 = Mounting plate height
- G2 = Centre-to-centre spacing of the attachment holes

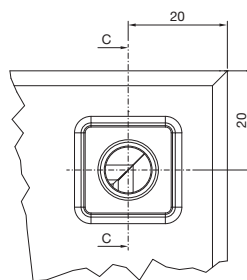
#### Gland plate

- M = Gland plate width
- O = Gland plate depth
- Type = Size of gland plate

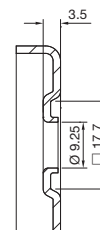
Detail X



Detail Y



Section C - C



| Model No.<br>AX | Width dimensions<br>mm |     |       |       |     |     |     | Height dimensions<br>mm |      |      |      |       |      |    | Depth dimensions<br>mm |       |       |       |     | Mounting plate<br>mm |     |      |      |      | Gland plate<br>mm |     |      |
|-----------------|------------------------|-----|-------|-------|-----|-----|-----|-------------------------|------|------|------|-------|------|----|------------------------|-------|-------|-------|-----|----------------------|-----|------|------|------|-------------------|-----|------|
|                 | B1                     | B2  | B3    | B4    | B5  | B6  | B7  | H1                      | H2   | H3   | H4   | H5    | H6   | N  | T1                     | T2    | T3    | T4    | T7  | F1                   | F2  | G1   | G2   | Type | M                 | O   | Type |
| 1260.000        | 600                    | 595 | 552.2 | 459.5 | 475 | 560 | 400 | 1200                    | 1195 | 1156 | 1050 | 534.7 | 1160 | 42 | 300.7                  | 277.5 | 277.2 | 187.5 | 185 | 545                  | 500 | 1175 | 1150 | 1    | 436               | 221 | 7    |
| 1261.000        | 600                    | 595 | 552.2 | 459.5 | 475 | 560 | 400 | 1200                    | 1195 | 1156 | 1050 | 534.7 | 1160 | 42 | 400.7                  | 377.5 | 377.2 | 287.5 | 185 | 545                  | 500 | 1175 | 1150 | 1    | 436               | 221 | 7    |

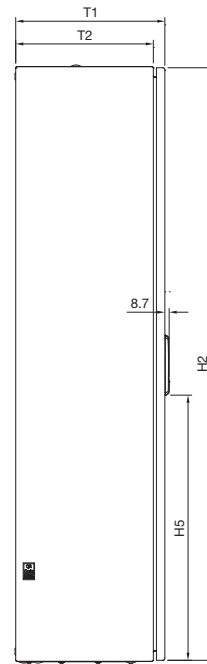
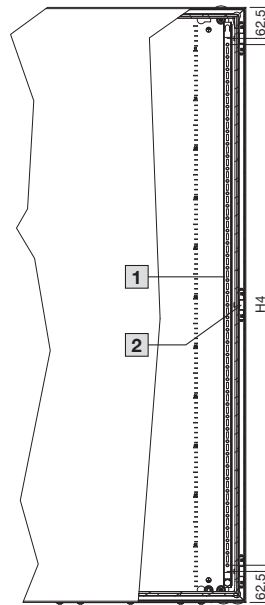
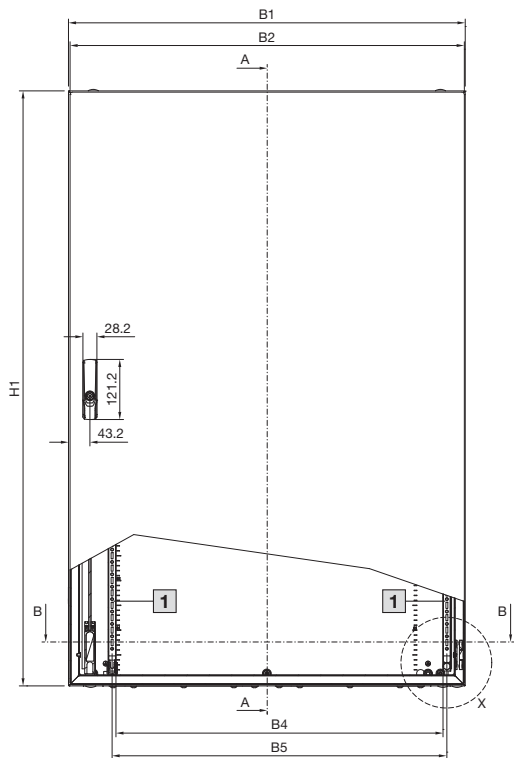
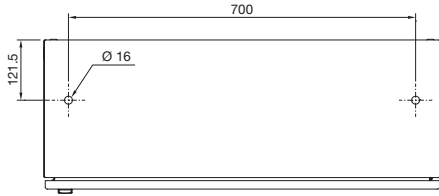
# Compact enclosures

## Compact enclosures AX, sheet steel

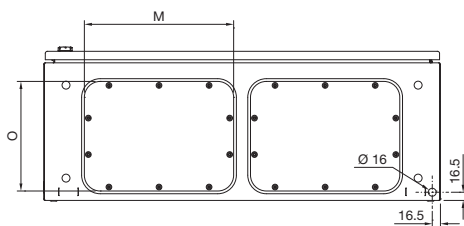
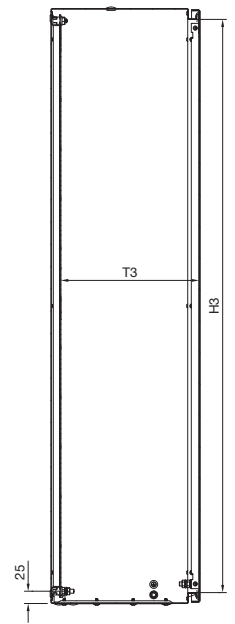
### Basic enclosure AX

with 3-point locking system and two gland plates

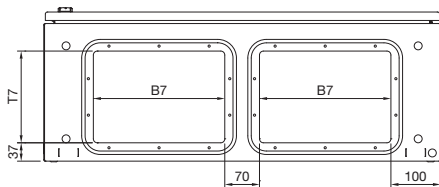
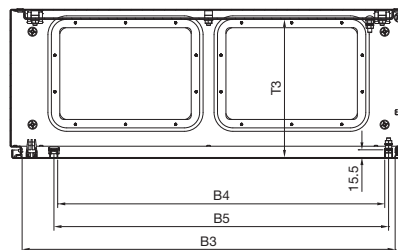
Drilled holes for eyebolts



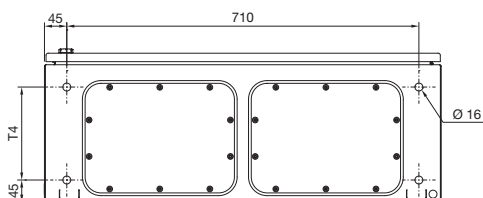
Section A – A



Section B – B



Drilled holes for base/plinth



- 1 Door interior view
- 2 Central hinge, only where  $H1 > 800$  mm
- 3 Central embossed half-shear, only where  $B1/H1 \geq 500$  mm

# Compact enclosures

## Compact enclosures AX, sheet steel

### Basic enclosure AX

with 3-point locking system and two gland plates

#### Enclosure

- B1 = Enclosure width (overall width)
- B2 = Door width
- B3 = Clearance width, enclosure opening
- B4 = Clearance width between door profile strips
- B5 = Mounting distance, door profile strips
- B6 = Mounting distance, enclosures
- B7 = Gland plate opening
  
- H1 = Enclosure height (overall height)
- H2 = Door height
- H3 = Clearance height, enclosure opening
- H4 = Overall height, 25 mm pitch pattern of holes
- H5 = Distance from bottom edge of door to bottom edge of lock plate
- H6 = Mounting distance, enclosures
- N = No. of 25 mm pitch patterns of holes

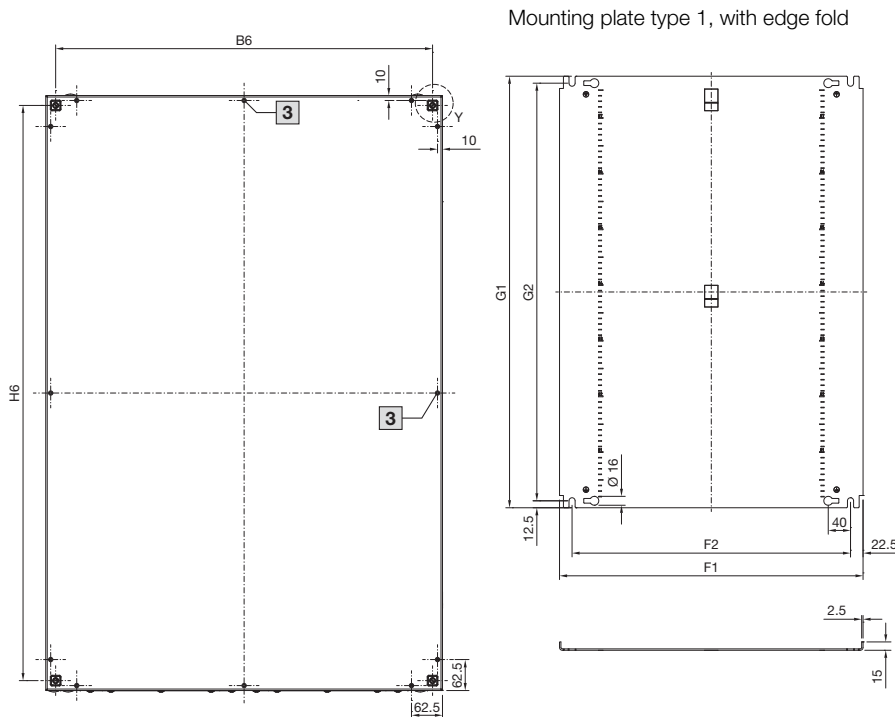
- T1 = Overall depth
- T2 = Enclosure depth
- T3 = Installation depth (distance from inside of door to mounting plate)
- T4 = Spacing between holes for base/plinth
- T7 = Gland plate opening

#### Mounting plate

- F1 = Mounting plate width
- F2 = Centre-to-centre spacing of the attachment holes
- G1 = Mounting plate height
- G2 = Centre-to-centre spacing of the attachment holes

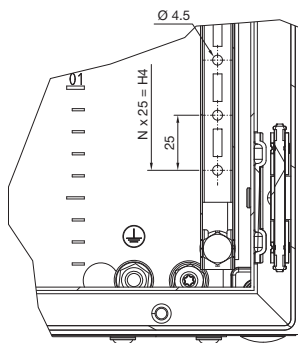
#### Gland plate

- M = Gland plate width
- O = Gland plate depth
- Type = Size of gland plate

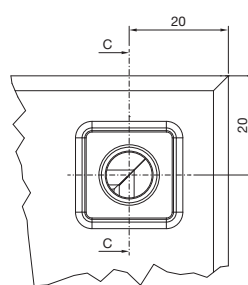


Mounting plate type 1, with edge fold

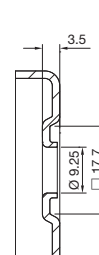
Detail X



Detail Y



Section C - C



| Model No.<br>AX | Width dimensions<br>mm |     |       |       |     |     |     | Height dimensions<br>mm |      |      |      |       |      |    | Depth dimensions<br>mm |       |       |       |     | Mounting plate<br>mm |     |      |      | Gland plate<br>mm |     |     |      |
|-----------------|------------------------|-----|-------|-------|-----|-----|-----|-------------------------|------|------|------|-------|------|----|------------------------|-------|-------|-------|-----|----------------------|-----|------|------|-------------------|-----|-----|------|
|                 | B1                     | B2  | B3    | B4    | B5  | B6  | B7  | H1                      | H2   | H3   | H4   | H5    | H6   | N  | T1                     | T2    | T3    | T4    | T7  | F1                   | F2  | G1   | G2   | Type              | M   | O   | Type |
| 1280.000        | 800                    | 795 | 752.2 | 659.5 | 675 | 760 | 265 | 1200                    | 1195 | 1156 | 1050 | 534.7 | 1160 | 42 | 300.7                  | 277.5 | 278.7 | 187.5 | 185 | 745                  | 700 | 1175 | 1150 | 1                 | 301 | 221 | 5    |
| 1281.000        | 800                    | 795 | 752.2 | 659.5 | 675 | 760 | 265 | 1200                    | 1195 | 1156 | 1050 | 534.7 | 1160 | 42 | 400.7                  | 377.5 | 378.7 | 287.5 | 185 | 745                  | 700 | 1175 | 1150 | 1                 | 301 | 221 | 5    |

# Compact enclosures

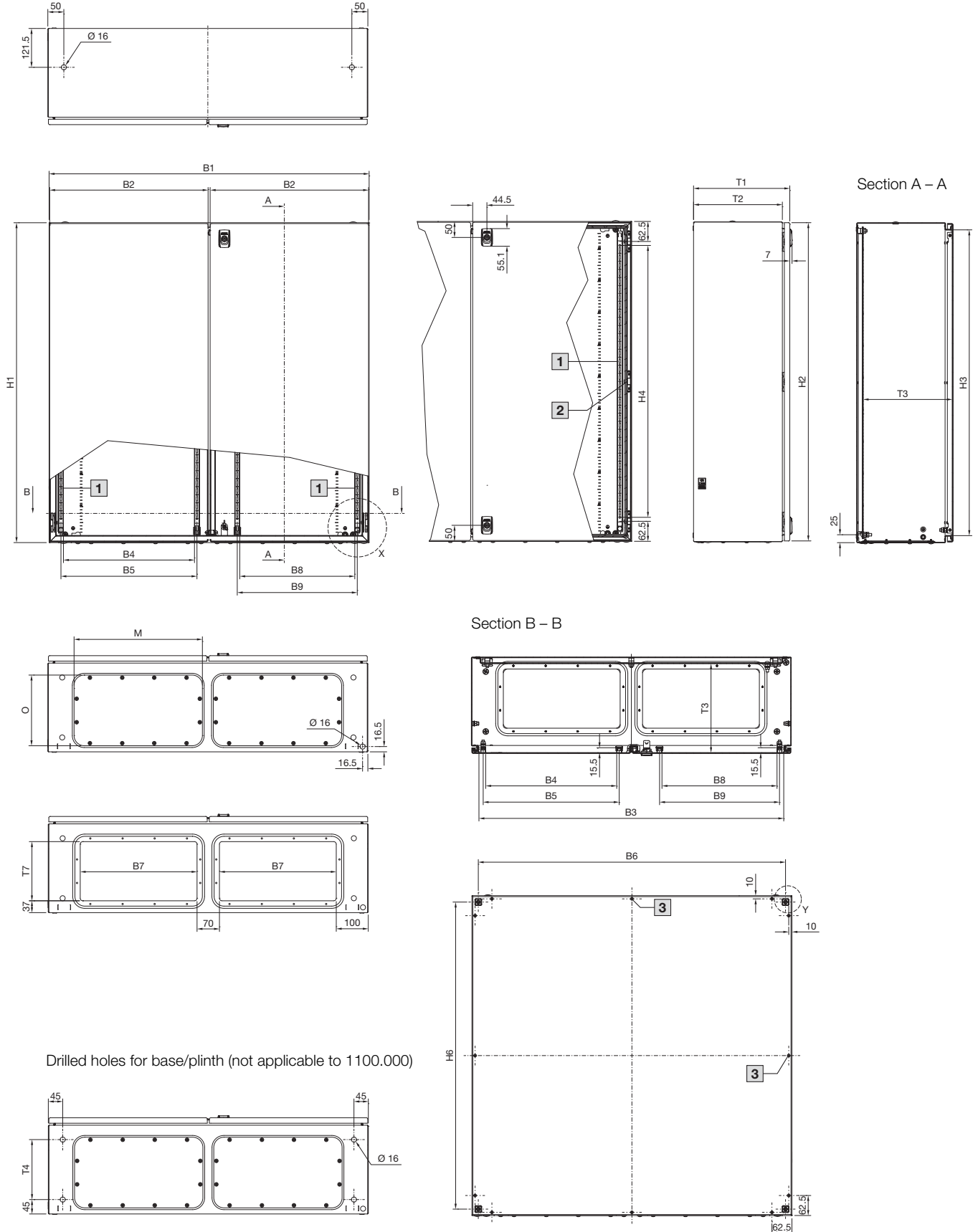
## Compact enclosures AX, sheet steel

### Basic enclosure AX

with cam lock, two-door

Drilled holes for eyebolts (not applicable to 1100.000)

- 1 Door interior view
- 2 Central hinge, only where  $H1 > 800$  mm
- 3 Central embossed half-shear, only where  $B1/H1 \geq 500$  mm

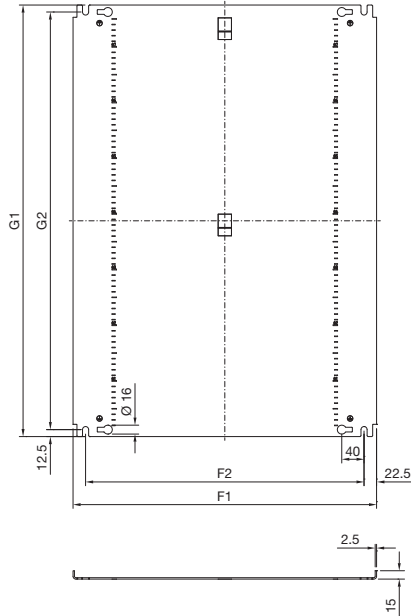


# Compact enclosures

## Compact enclosures AX, sheet steel

### Basic enclosure AX with cam lock, two-door

Mounting plate type 1, with edge fold



#### Enclosure

- B1 = Enclosure width (overall width)
- B2 = Door width
- B3 = Clearance width, enclosure opening
- B4 = Clearance width between door profile strips, hinged door (left-hand door)
- B5 = Mounting distance, door profile strips, hinged door (left-hand door)
- B6 = Mounting distance, enclosures
- B7 = Gland plate opening
- B8 = Clearance width between door profile strips, locked door (right-hand door)
- B9 = Mounting distance, door profile strips, locked door (right-hand door)
- H1 = Enclosure height (overall height)
- H2 = Door height
- H3 = Clearance height, enclosure opening
- H4 = Overall height, 25 mm pitch pattern of holes
- H6 = Mounting distance, enclosures
- N = No. of 25 mm pitch patterns of holes
- T1 = Overall depth
- T2 = Enclosure depth
- T3 = Installation depth (distance from inside of door to mounting plate)
- T4 = Spacing between holes for base/plinth
- T7 = Gland plate opening

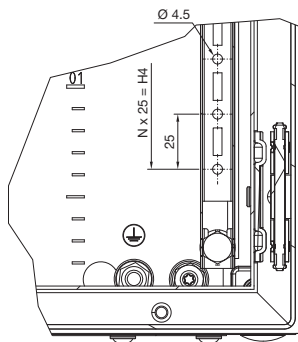
#### Mounting plate

- F1 = Mounting plate width
- F2 = Centre-to-centre spacing of the attachment holes
- G1 = Mounting plate height
- G2 = Centre-to-centre spacing of the attachment holes

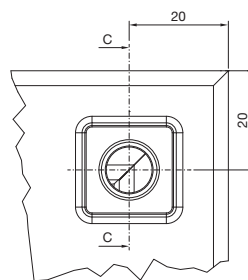
#### Gland plate

- M = Gland plate width
- O = Gland plate depth
- Type = Size of gland plate

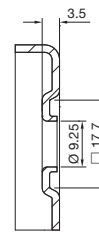
Detail X



Detail Y



Section C - C



| Model No. AX | Width dimensions mm |     |       |       |     |     |     |       |     | Height dimensions mm |     |     |     |     |    | Depth dimensions mm |       |       |       |     |
|--------------|---------------------|-----|-------|-------|-----|-----|-----|-------|-----|----------------------|-----|-----|-----|-----|----|---------------------|-------|-------|-------|-----|
|              | B1                  | B2  | B3    | B4    | B5  | B6  | B7  | B8    | B9  | H1                   | H2  | H3  | H4  | H6  | N  | T1                  | T2    | T3    | T4    | T7  |
| 1100.000     | 1000                | 495 | 952.4 | 409.5 | 425 | 960 | 411 | 359.5 | 375 | 760                  | 755 | 716 | 600 | 720 | 24 | 210.7               | 187.5 | 188.7 | -     | 113 |
| 1110.000     | 1000                | 495 | 952.4 | 409.5 | 425 | 960 | 365 | 359.5 | 375 | 1000                 | 995 | 956 | 850 | 960 | 34 | 300.7               | 277.5 | 278.7 | 187.5 | 185 |
| 1130.000     | 1000                | 495 | 952.4 | 409.5 | 425 | 960 | 365 | 359.5 | 375 | 760                  | 755 | 716 | 600 | 720 | 24 | 300.7               | 277.5 | 278.7 | 187.5 | 185 |

| Model No. AX | Mounting plate mm |     |     |     |      | Gland plate mm |     |      |
|--------------|-------------------|-----|-----|-----|------|----------------|-----|------|
|              | F1                | F2  | G1  | G2  | Type | M              | O   | Type |
| 1100.000     | 945               | 900 | 735 | 710 | 1    | 447            | 149 | 3    |
| 1110.000     | 945               | 900 | 975 | 950 | 1    | 401            | 221 | 6    |
| 1130.000     | 945               | 900 | 735 | 710 | 1    | 401            | 221 | 6    |

# Compact enclosures

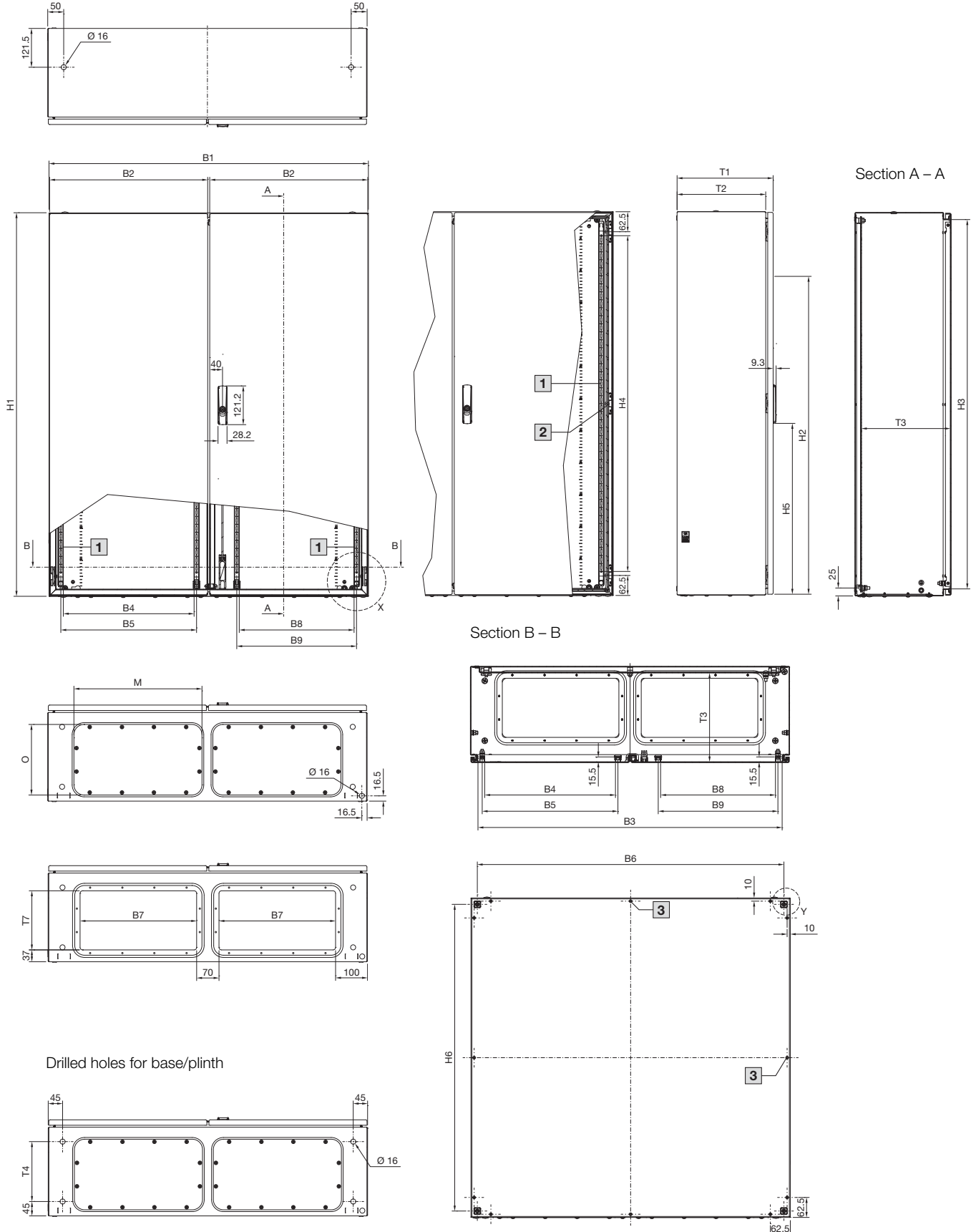
## Compact enclosures AX, sheet steel

### Basic enclosure AX

with 3-point lock system, double-door

Drilled holes for eyebolts

- 1 Door interior view
- 2 Central hinge, only where  $H1 > 800$  mm
- 3 Central embossed half-shear, only where  $B1/H1 \geq 500$  mm



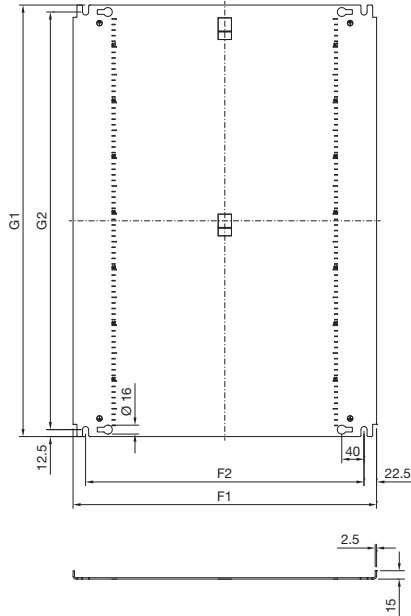
# Compact enclosures

## Compact enclosures AX, sheet steel

### Basic enclosure AX

with 3-point lock system, double-door

Mounting plate type 1, with edge fold



#### Enclosure

- B1 = Enclosure width (overall width)
- B2 = Door width
- B3 = Clearance width, enclosure opening
- B4 = Clearance width between door profile strips, hinged door (left-hand door)
- B5 = Mounting distance, door profile strips, hinged door (left-hand door)
- B6 = Mounting distance, enclosures
- B7 = Gland plate opening
- B8 = Clearance width between door profile strips, locked door (right-hand door)
- B9 = Mounting distance, door profile strips, locked door (right-hand door)
- H1 = Enclosure height (overall height)
- H2 = Door height
- H3 = Clearance height, enclosure opening
- H4 = Overall height, 25 mm pitch pattern of holes
- H5 = Distance from bottom edge of door to bottom edge of lock plate
- H6 = Mounting distance, enclosures
- N = No. of 25 mm pitch patterns of holes
- T1 = Overall depth
- T2 = Enclosure depth
- T3 = Installation depth (distance from inside of door to mounting plate)
- T4 = Spacing between holes for base/plinth
- T7 = Gland plate opening

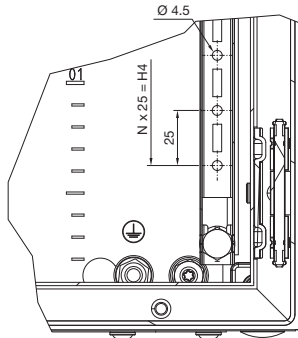
#### Mounting plate

- F1 = Mounting plate width
- F2 = Centre-to-centre spacing of the attachment holes
- G1 = Mounting plate height
- G2 = Centre-to-centre spacing of the attachment holes

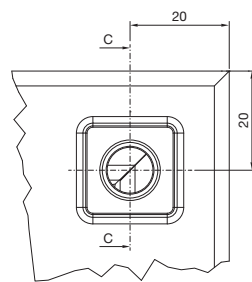
#### Gland plate

- M = Gland plate width
- O = Gland plate depth
- Type = Size of gland plate

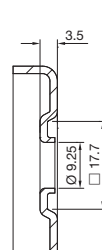
Detail X



Detail Y



Section C - C



| Model No.<br>AX | Width dimensions mm |     |        |       |     |      |     |       |     | Height dimensions mm |      |      |      |       |      |    | Depth dimensions mm |       |       |       |     |
|-----------------|---------------------|-----|--------|-------|-----|------|-----|-------|-----|----------------------|------|------|------|-------|------|----|---------------------|-------|-------|-------|-----|
|                 | B1                  | B2  | B3     | B4    | B5  | B6   | B7  | B8    | B9  | H1                   | H2   | H3   | H4   | H5    | H6   | N  | T1                  | T2    | T3    | T4    | T7  |
| 1213.000        | 1000                | 495 | 952.4  | 409.5 | 425 | 960  | 365 | 359.5 | 375 | 1200                 | 1195 | 1156 | 1050 | 534.7 | 1160 | 42 | 300.7               | 277.5 | 278.7 | 187.5 | 185 |
| 1114.000        | 1000                | 495 | 952.4  | 409.5 | 425 | 960  | 365 | 359.5 | 375 | 1,400                | 1395 | 1356 | 1250 | 634.7 | 1360 | 50 | 300.7               | 277.5 | 278.7 | 187.5 | 185 |
| 1214.000        | 1000                | 495 | 952.4  | 409.5 | 425 | 960  | 365 | 359.5 | 375 | 1200                 | 1195 | 1156 | 1050 | 534.7 | 1160 | 42 | 400.7               | 377.5 | 378.7 | 287.5 | 185 |
| 1115.000        | 1000                | 495 | 952.4  | 409.5 | 425 | 960  | 365 | 359.5 | 375 | 1,400                | 1395 | 1356 | 1250 | 634.7 | 1360 | 50 | 400.7               | 377.5 | 378.7 | 287.5 | 185 |
| 1116.000        | 1200                | 595 | 1152.4 | 509.5 | 525 | 1160 | 400 | 459.5 | 475 | 1200                 | 1195 | 1156 | 1050 | 534.7 | 1160 | 42 | 400.7               | 377.5 | 378.7 | 287.5 | 185 |

| Model No.<br>AX | Mounting plate mm |      |      |      | Gland plate mm |     |     |      |
|-----------------|-------------------|------|------|------|----------------|-----|-----|------|
|                 | F1                | F2   | G1   | G2   | Type           | M   | O   | Type |
| 1213.000        | 945               | 900  | 1175 | 1150 | 1              | 401 | 221 | 6    |
| 1114.000        | 945               | 900  | 1375 | 1350 | 1              | 401 | 221 | 6    |
| 1214.000        | 945               | 900  | 1175 | 1150 | 1              | 401 | 221 | 6    |
| 1115.000        | 945               | 900  | 1375 | 1350 | 1              | 401 | 221 | 6    |
| 1116.000        | 1145              | 1100 | 1175 | 1150 | 1              | 436 | 221 | 7    |

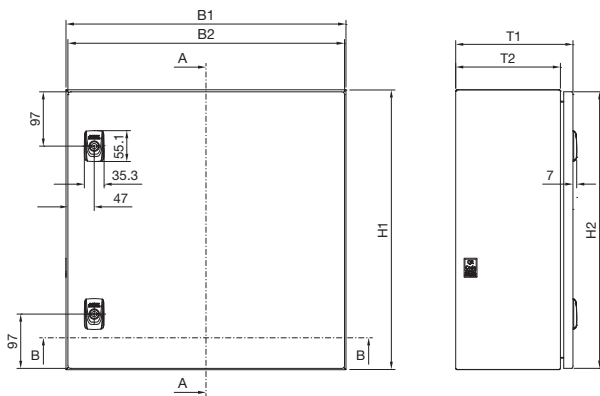
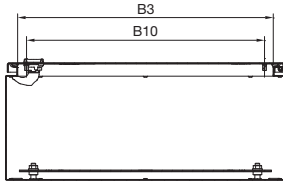
# Compact enclosures

## Compact enclosures AX, stainless steel

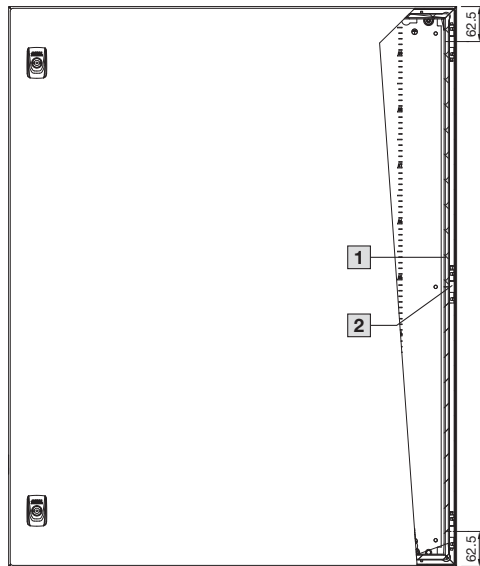
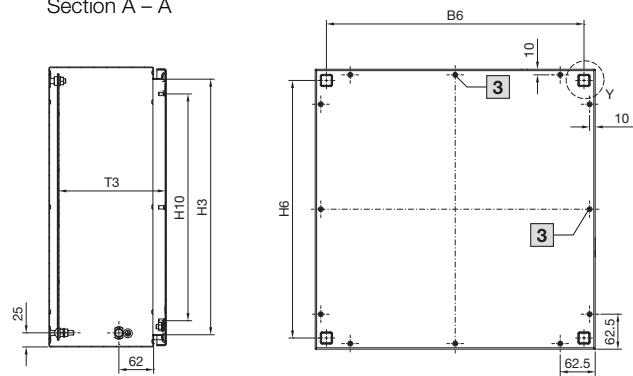
### Basic enclosure AX with cam lock, single-door

- 1 Door interior view
- 2 Central hinge, only where  $H1 > 800$  mm
- 3 Central embossed half-shear, only where  $B1/H1 \geq 500$  mm
- 4 Not applicable to  $B1 = 300$  mm

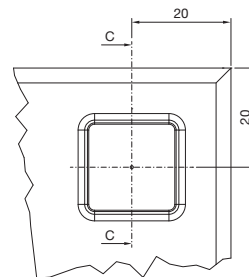
Section B – B



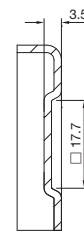
Section A – A



Detail Y



Section C – C



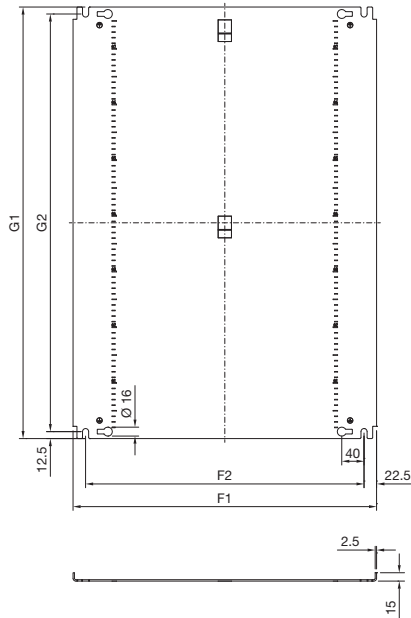


# Compact enclosures

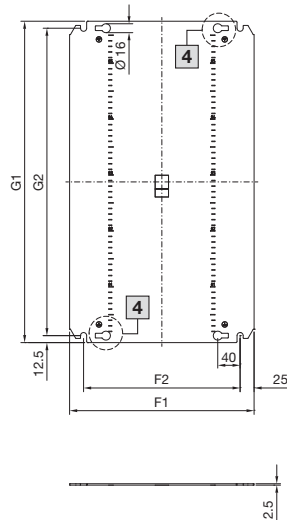
## Compact enclosures AX, stainless steel

### Basic enclosure AX with cam lock, single-door

Mounting plate type 1,  
with edge fold



Mounting plate type 2,  
without edge fold



#### Enclosure

B1 = Enclosure width (overall width)  
B2 = Door width  
B3 = Clearance width, enclosure opening  
B6 = Mounting distance, enclosures  
B10 = Distance between threaded bolts

H1 = Enclosure height (overall height)  
H2 = Door height  
H3 = Clearance height, enclosure opening  
H6 = Mounting distance, enclosures  
H10 = Distance between threaded bolts

T1 = Overall depth  
T2 = Enclosure depth  
T3 = Installation depth (distance from inside of door to mounting plate)

#### Mounting plate

F1 = Mounting plate width  
F2 = Centre-to-centre spacing of the attachment holes

G1 = Mounting plate height  
G2 = Centre-to-centre spacing of the attachment holes

| Model No.<br>AX | Width dimensions mm |     |       |     |     | Height dimensions mm |     |       |     |     | Depth dimensions mm |       |       | Mounting plates mm |     |     |     |      |
|-----------------|---------------------|-----|-------|-----|-----|----------------------|-----|-------|-----|-----|---------------------|-------|-------|--------------------|-----|-----|-----|------|
|                 | B1                  | B2  | B3    | B6  | B10 | H1                   | H2  | H3    | H6  | H10 | T1                  | T2    | T3    | F1                 | F2  | G1  | G2  | Type |
| 1003.000        | 300                 | 294 | 256.5 | 260 | 225 | 300                  | 294 | 256.5 | 260 | 205 | 209.4               | 187.0 | 189.9 | 250                | 200 | 275 | 250 | 2    |
| 1005.000        | 300                 | 294 | 256.5 | 260 | 225 | 380                  | 374 | 336.5 | 340 | 285 | 209.4               | 187.0 | 189.9 | 250                | 200 | 355 | 330 | 2    |
| 1006.000        | 380                 | 374 | 336.5 | 340 | 305 | 380                  | 374 | 336.5 | 340 | 285 | 209.4               | 187.0 | 189.9 | 330                | 280 | 355 | 330 | 2    |
| 1007.000        | 500                 | 494 | 456.5 | 460 | 425 | 500                  | 494 | 456.5 | 460 | 405 | 209.4               | 187.0 | 189.9 | 450                | 400 | 475 | 450 | 2    |
| 1008.000        | 380                 | 374 | 336.5 | 340 | 305 | 600                  | 594 | 556.5 | 560 | 505 | 209.4               | 187.0 | 189.9 | 330                | 280 | 575 | 550 | 2    |
| 1009.000        | 600                 | 594 | 556.5 | 560 | 525 | 380                  | 374 | 336.5 | 340 | 285 | 209.4               | 187.0 | 189.9 | 550                | 500 | 355 | 330 | 2    |
| 1010.000        | 600                 | 594 | 556.0 | 560 | 525 | 600                  | 594 | 556   | 560 | 505 | 209.4               | 187.5 | 189.9 | 550                | 500 | 575 | 550 | 2    |
| 1011.000        | 380                 | 374 | 336.5 | 340 | 305 | 300                  | 294 | 256.5 | 260 | 205 | 209.4               | 187.0 | 189.9 | 330                | 280 | 275 | 250 | 2    |
| 1012.000        | 600                 | 595 | 556.0 | 560 | 525 | 760                  | 755 | 716.5 | 720 | 665 | 209.4               | 187.5 | 189.9 | 550                | 500 | 735 | 710 | 2    |
| 1013.000        | 500                 | 494 | 456.0 | 460 | 425 | 500                  | 494 | 456.5 | 460 | 405 | 300.4               | 277.5 | 280.9 | 450                | 400 | 475 | 450 | 2    |
| 1014.000        | 760                 | 755 | 716.0 | 720 | 685 | 760                  | 755 | 716.5 | 720 | 665 | 300.4               | 277.5 | 280.9 | 705                | 660 | 735 | 710 | 1    |
| 1015.000        | 400                 | 394 | 356.5 | 360 | 325 | 500                  | 494 | 456.5 | 460 | 405 | 209.4               | 187.0 | 189.9 | 350                | 300 | 475 | 450 | 2    |
| 1016.000        | 800                 | 795 | 756.0 | 760 | 725 | 1000                 | 995 | 956.5 | 960 | 905 | 300.4               | 277.5 | 280.9 | 745                | 700 | 975 | 950 | 1    |
| 1302.000        | 300                 | 294 | 256.5 | 260 | 225 | 380                  | 374 | 336.5 | 340 | 285 | 209.4               | 187.0 | 189.9 | 250                | 200 | 355 | 330 | 2    |
| 1303.000        | 380                 | 374 | 336.5 | 340 | 305 | 380                  | 374 | 336.5 | 340 | 285 | 209.4               | 187.0 | 189.9 | 330                | 280 | 355 | 330 | 2    |
| 1304.000        | 600                 | 594 | 556.0 | 560 | 525 | 600                  | 594 | 556.5 | 560 | 505 | 209.4               | 187.5 | 189.9 | 550                | 500 | 575 | 550 | 2    |

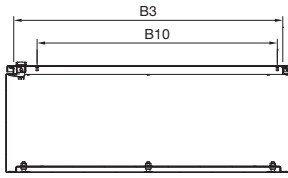
# Compact enclosures

## Compact enclosures AX, stainless steel

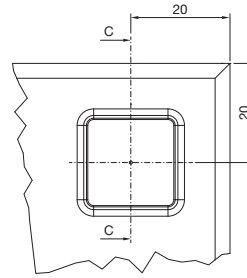
### Basic enclosure AX

with 3-point lock system, single-door

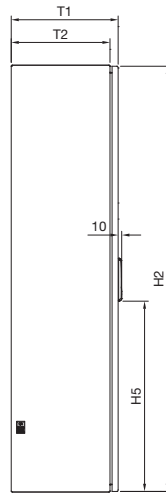
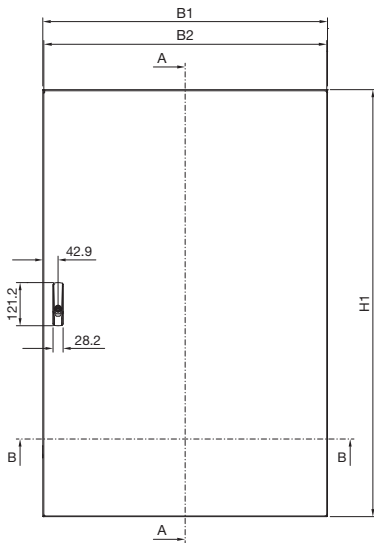
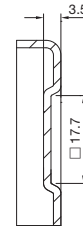
Section B – B



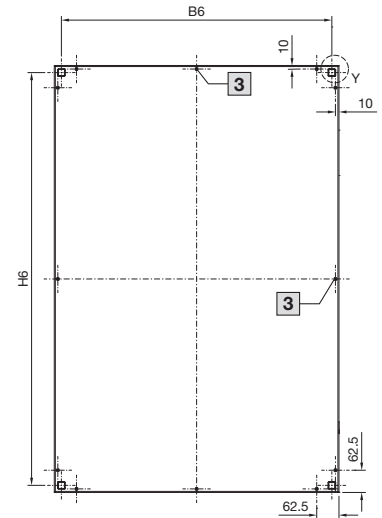
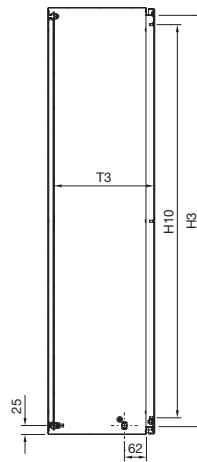
Detail Y



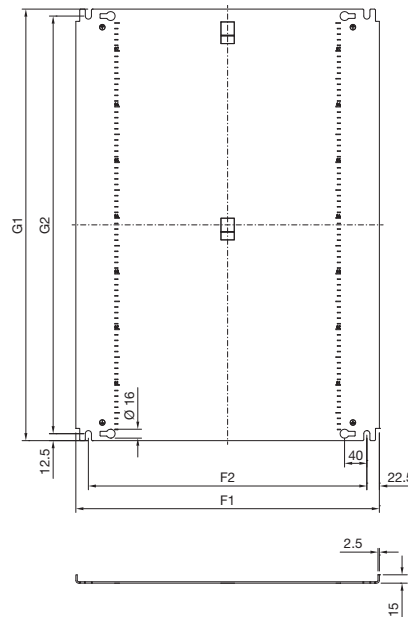
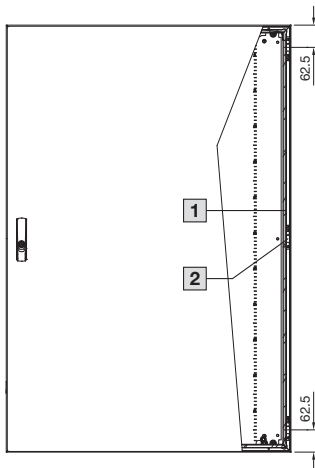
Section C – C



Section A – A



Mounting plate type 1, with edge fold



#### Enclosure

- B1 = Enclosure width (overall width)
- B2 = Door width
- B3 = Clearance width, enclosure opening
- B6 = Mounting distance, enclosures
- B10 = Distance between threaded bolts
- H1 = Enclosure height (overall height)
- H2 = Door height
- H3 = Clearance height, enclosure opening
- H5 = Bottom edge of door to bottom edge of lock plate
- H6 = Mounting distance, enclosures
- H10 = Distance between threaded bolts
- T1 = Overall depth
- T2 = Enclosure depth
- T3 = Installation depth (distance from inside of door to mounting plate)

#### Mounting plate

- F1 = Mounting plate width
- F2 = Centre-to-centre spacing of the attachment holes
- G1 = Mounting plate height
- G2 = Centre-to-centre spacing of the attachment holes

- 1 Door interior view
- 2 Central hinge, only where H1 > 800 mm
- 3 Central embossed half-shear, only where B1/H1 ≥ 500 mm

| Model No.<br>AX | Width dimensions mm |     |     |     |     | Height dimensions mm |      |      |       |      |      | Depth dimensions mm |       |       | Mounting plates mm |     |      |      |      |
|-----------------|---------------------|-----|-----|-----|-----|----------------------|------|------|-------|------|------|---------------------|-------|-------|--------------------|-----|------|------|------|
|                 | B1                  | B2  | B3  | B6  | B10 | H1                   | H2   | H3   | H5    | H6   | H10  | T1                  | T2    | T3    | F1                 | F2  | G1   | G2   | Type |
| 1017.000        | 800                 | 795 | 756 | 760 | 675 | 1200                 | 1195 | 1156 | 534.7 | 1160 | 1150 | 300.4               | 277.5 | 280.4 | 745                | 700 | 1175 | 1150 | 1    |

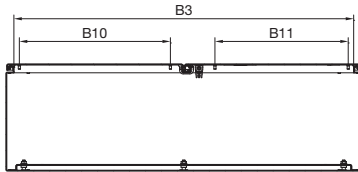
# Compact enclosures

## Compact enclosures AX, stainless steel

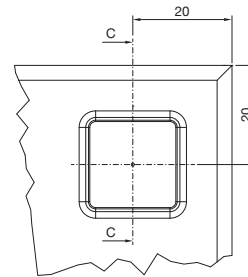
### Basic enclosure AX

with cam lock, double-door  
with 3-point locking system, double-door

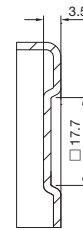
Section B – B



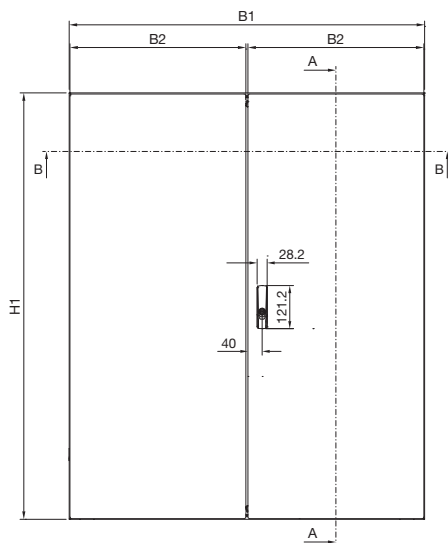
Detail Y



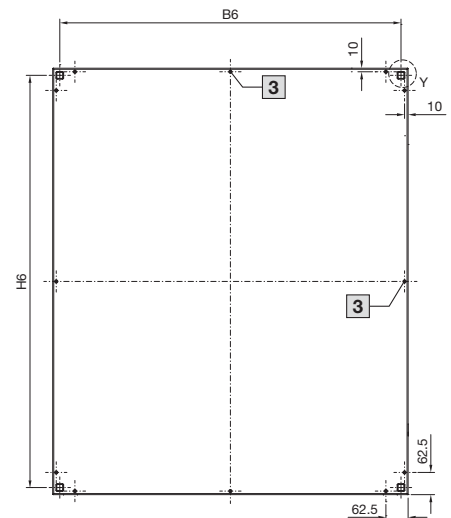
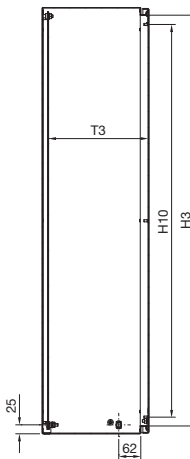
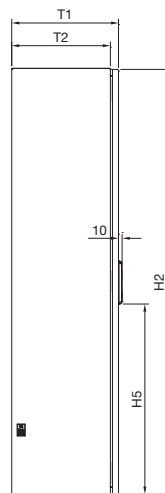
Section C – C



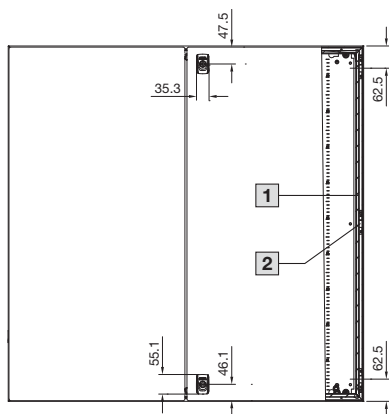
With 3-point lock system where  $H1 > 1000$  mm



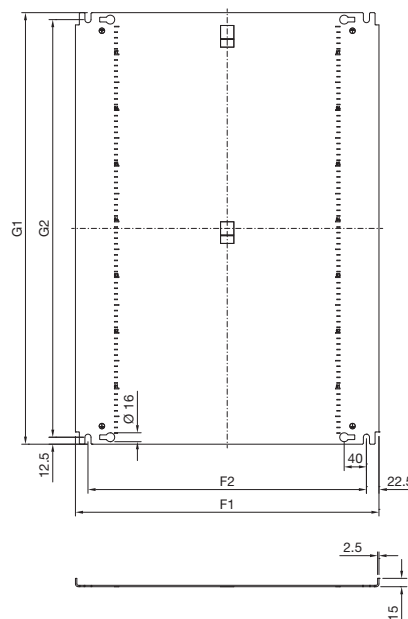
Section A – A



With cam lock where  $H1 \leq 1000$  mm



Mounting plate type 1, with edge fold



#### Enclosure

- B1 = Enclosure width (overall width)
- B2 = Door width
- B3 = Clearance width, enclosure opening
- B6 = Mounting distance, enclosures
- B10 = Distance between threaded bolts, adjacent door
- B11 = Distance between threaded bolts, locked door
- H1 = Enclosure height (overall height)
- H2 = Door height
- H3 = Clearance height, enclosure opening
- H5 = Bottom edge of door to bottom edge of lock plate
- H6 = Mounting distance, enclosures
- H10 = Distance between threaded bolts
- T1 = Overall depth
- T2 = Enclosure depth
- T3 = Installation depth (distance from inside of door to mounting plate)

#### Mounting plate

- F1 = Mounting plate width
- F2 = Centre-to-centre spacing of the attachment holes
- G1 = Mounting plate height
- G2 = Centre-to-centre spacing of the attachment holes

- 1 Door interior view
- 2 Central hinge, only where  $H1 > 800$  mm
- 3 Central embossed half-shear, only where  $B1/H1 \geq 500$  mm

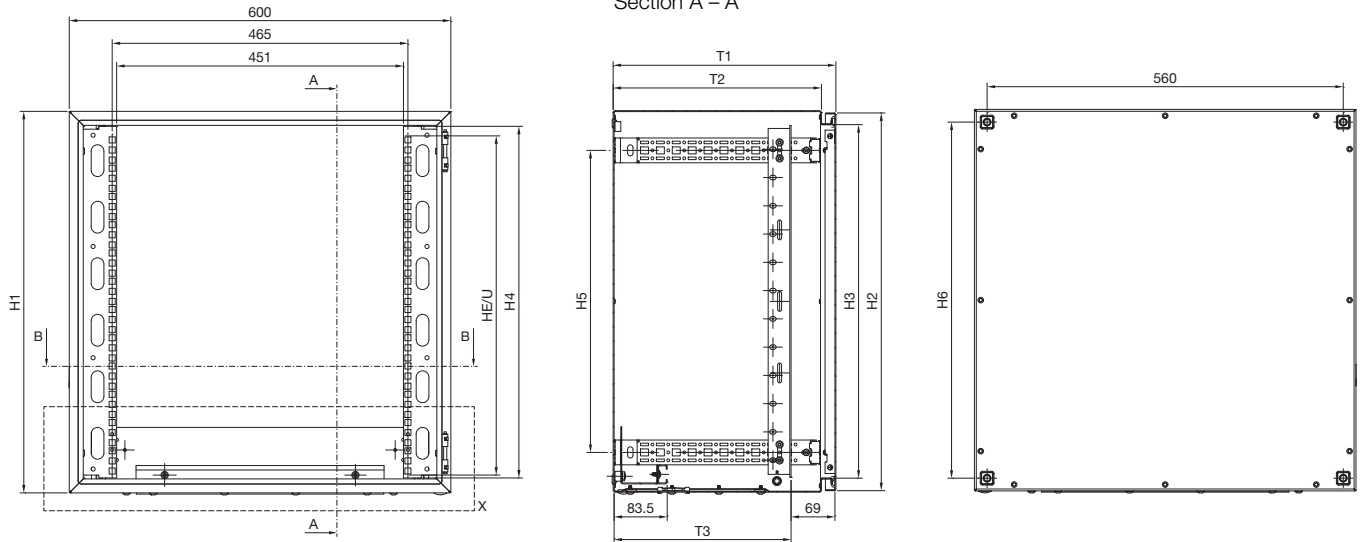
| Model No.<br>AX | Width dimensions mm |     |     |     |     |     | Height dimensions mm |      |      |       |      |      | Depth dimensions mm |       |       | Mounting plates mm |     |      |      |      |
|-----------------|---------------------|-----|-----|-----|-----|-----|----------------------|------|------|-------|------|------|---------------------|-------|-------|--------------------|-----|------|------|------|
|                 | B1                  | B2  | B3  | B6  | B10 | B11 | H1                   | H2   | H3   | H5    | H6   | H10  | T1                  | T2    | T3    | F1                 | F2  | G1   | G2   | Type |
| 1018.000        | 1000                | 495 | 956 | 960 | 425 | 375 | 1000                 | 995  | 956  | -     | 960  | 905  | 300.4               | 277.5 | 280.4 | 945                | 900 | 975  | 950  | 1    |
| 1019.000        | 1000                | 495 | 956 | 960 | 425 | 375 | 1200                 | 1195 | 1156 | 535.4 | 1160 | 1105 | 300.4               | 277.5 | 280.4 | 945                | 900 | 1175 | 1150 | 1    |
| 1305.000        | 1000                | 495 | 956 | 960 | 425 | 375 | 1200                 | 1195 | 1156 | 535.4 | 1160 | 1105 | 300.4               | 277.5 | 280.4 | 945                | 900 | 1175 | 1150 | 1    |

# Compact enclosures

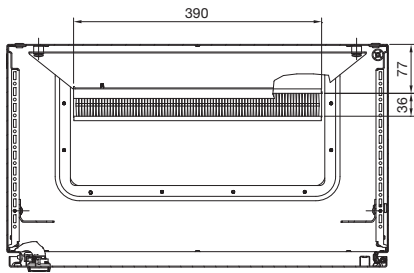
## Compact enclosures AX

### Wall-mounted enclosures AX IT

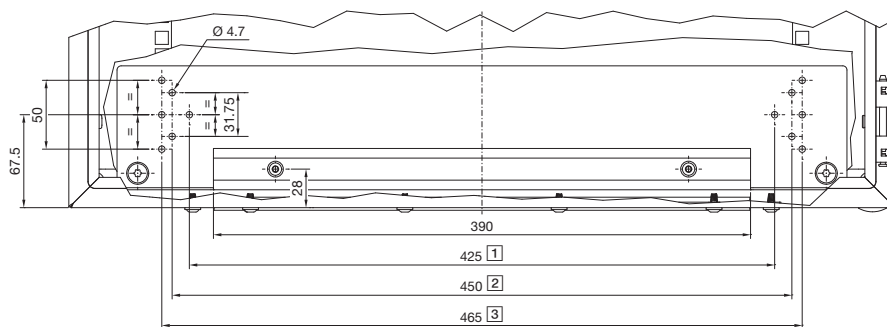
with 482.6 mm (19") mounting angles, depth-variable



Section B – B



Detail X

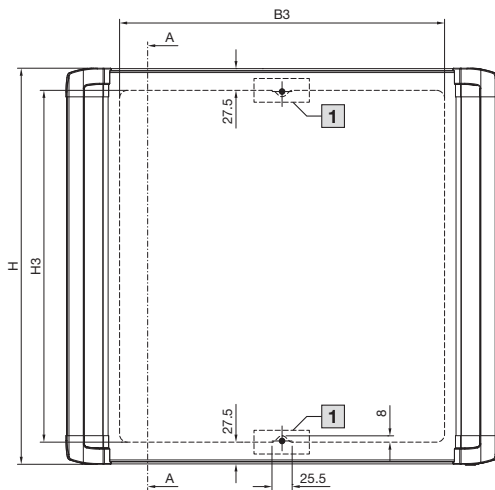


- 1 For earth rail  
DK 7113.000
- 2 For 482.6 mm (19") socket strip, 1 U  
DK 7240.XXX
- 3 For 482.6 mm (19") socket strip, 2 U  
DK 7000.630

| Model No.<br>AX IT | Height dimensions mm |     |     |     |     |     |     | Depth dimensions mm |       |     |
|--------------------|----------------------|-----|-----|-----|-----|-----|-----|---------------------|-------|-----|
|                    | U                    | H1  | H2  | H3  | H4  | H5  | H6  | T1                  | T2    | T2  |
| 7641.350           | 7                    | 380 | 374 | 336 | 333 | 255 | 340 | 350                 | 327.5 | 278 |
| 7643.350           | 12                   | 600 | 594 | 556 | 553 | 475 | 560 | 350                 | 327.5 | 278 |
| 7645.350           | 16                   | 760 | 754 | 716 | 711 | 635 | 720 | 350                 | 327.5 | 278 |
| 7646.400           | 16                   | 800 | 794 | 756 | 711 | 650 | 760 | 400                 | 377.5 | 316 |

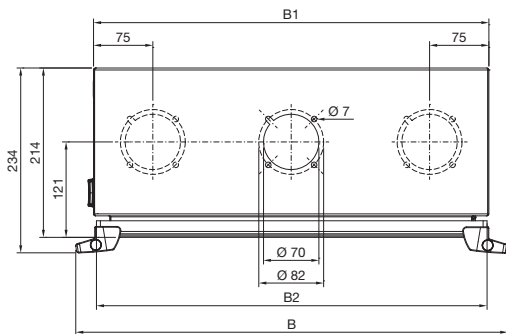
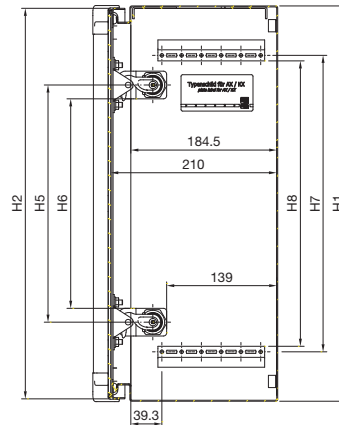
### Command panel AX

with handle strips, service access from the front



1 Not applicable to AX 6315.150

Section A – A



#### Enclosure

B = Overall width with handle strips

B1 = Enclosure width

B2 = Door width

B3 = Maximum usable mounting space in the width

H = Overall height with handle strips

H1 = Enclosure height

H2 = Door height

H3 = Maximum usable mounting space in the height

H5 = Lock spacing

H6 = Clearance height between positioning brackets

H7 = Mounting distance between mounting brackets

H8 = Clearance height between mounting brackets

| Model No. AX | Width dimensions mm |     |     |     | Height dimensions mm |     |     |     |     |     |     |     |
|--------------|---------------------|-----|-----|-----|----------------------|-----|-----|-----|-----|-----|-----|-----|
|              | B                   | B1  | B2  | B3  | H                    | H1  | H2  | H3  | H5  | H6  | H7  | H8  |
| 6315.150     | 345                 | 300 | 294 | 211 | 301                  | 300 | 294 | 245 | –   | –   | 175 | 161 |
| 6315.250     | 425                 | 380 | 374 | 291 | 301                  | 300 | 294 | 245 | –   | –   | 175 | 161 |
| 6315.350     | 425                 | 380 | 374 | 291 | 381                  | 380 | 374 | 325 | –   | –   | 275 | 261 |
| 6315.450     | 545                 | 500 | 494 | 411 | 501                  | 500 | 494 | 445 | 300 | 265 | 375 | 361 |
| 6315.650     | 645                 | 600 | 594 | 511 | 601                  | 600 | 594 | 545 | 400 | 365 | 475 | 461 |

# Compact enclosures

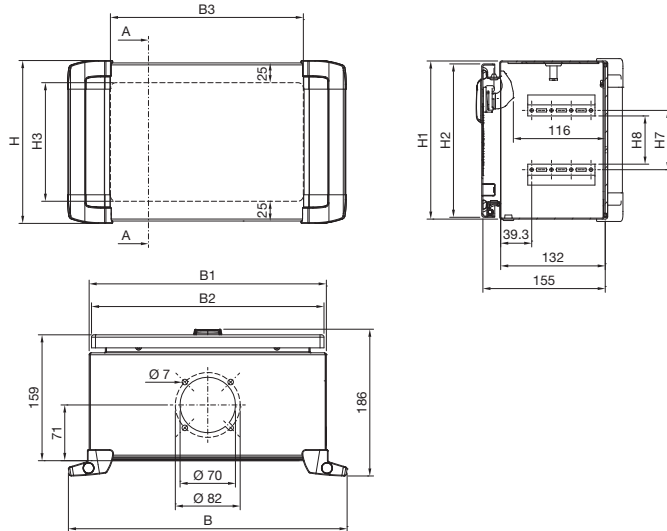
## Compact enclosures AX

### Command panel AX

with handle strips, service access from the rear

AX 6320.050

Section A – A



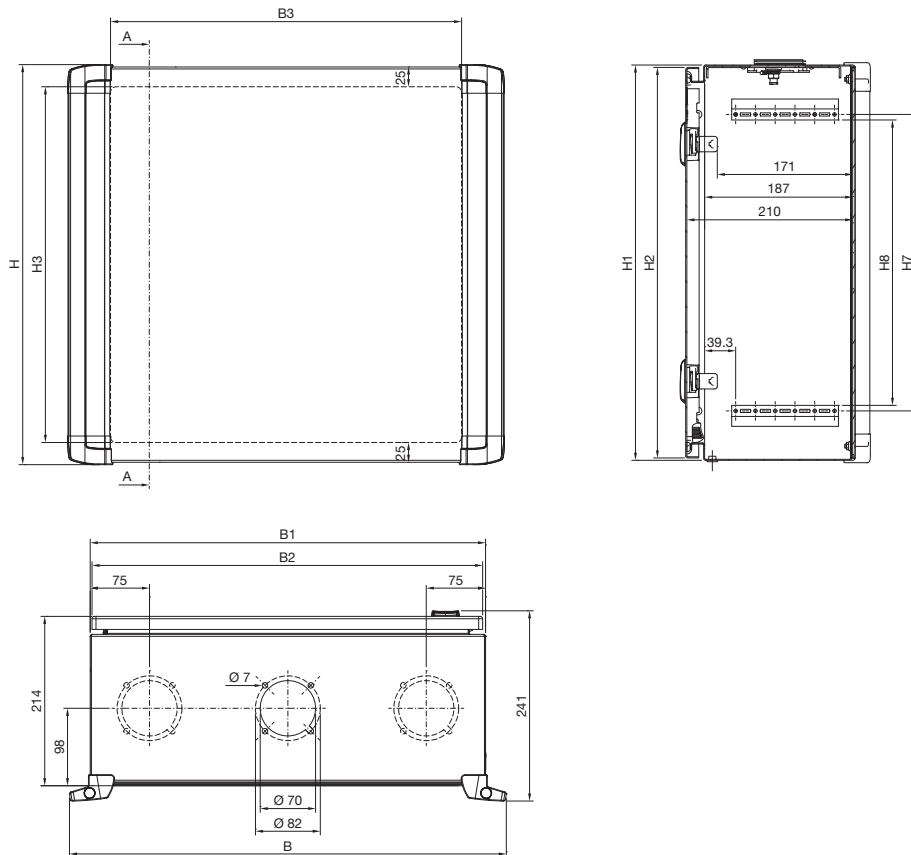
#### Enclosure

B = Overall width with handle strips  
 B1 = Enclosure width  
 B2 = Door width  
 B3 = Maximum usable mounting space in the width

H = Overall height with handle strips  
 H1 = Enclosure height  
 H2 = Door height  
 H3 = Maximum usable mounting space in the height  
 H7 = Mounting distance between mounting brackets  
 H8 = Clearance height between mounting brackets

AX 6320.350, AX 6320.450, AX 6320.550, AX 6320.650

Section A – A

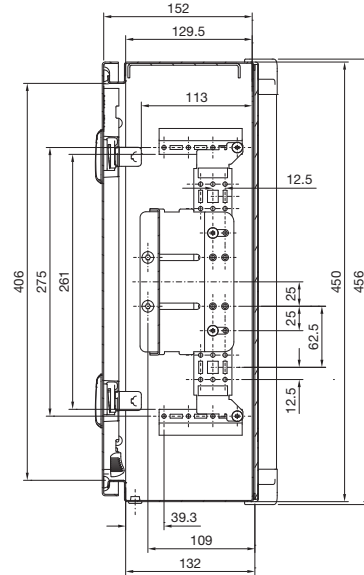
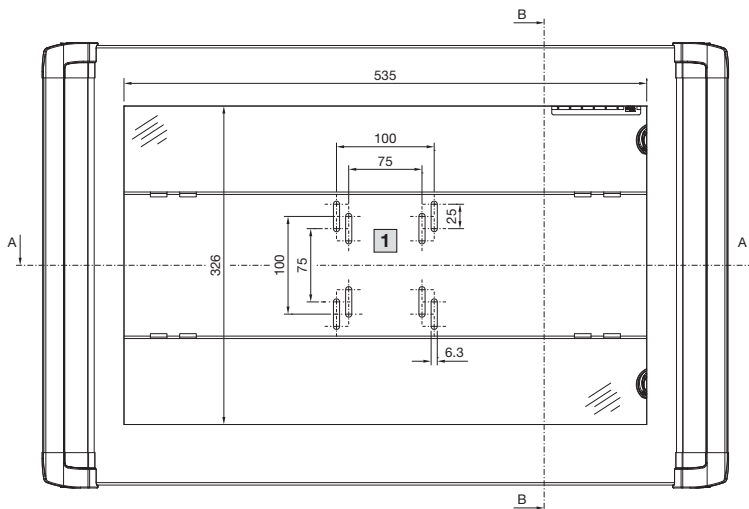


| Model No. AX | Width dimensions mm |     |     |     | Height dimensions mm |     |     |     |     |     |
|--------------|---------------------|-----|-----|-----|----------------------|-----|-----|-----|-----|-----|
|              | B                   | B1  | B2  | B3  | H                    | H1  | H2  | H3  | H7  | H8  |
| 6320.050     | 352.5               | 300 | 294 | 244 | 206                  | 200 | 194 | 150 | 75  | 61  |
| 6320.350     | 432.5               | 380 | 374 | 324 | 386                  | 380 | 374 | 330 | 275 | 261 |
| 6320.450     | 552.5               | 500 | 494 | 444 | 506                  | 500 | 494 | 450 | 375 | 361 |
| 6320.550     | 652.5               | 600 | 594 | 544 | 386                  | 380 | 374 | 330 | 275 | 261 |
| 6320.650     | 652.5               | 600 | 594 | 544 | 606                  | 600 | 594 | 550 | 475 | 461 |

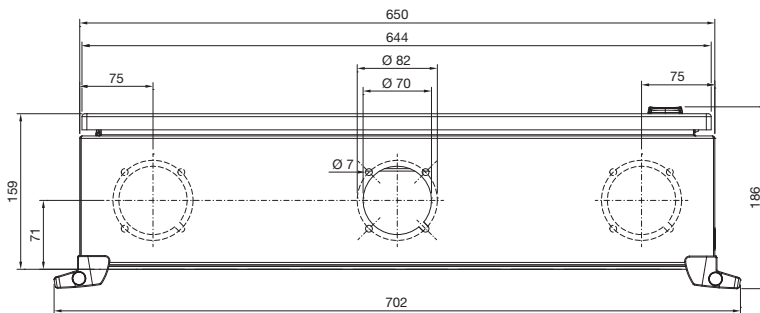
### Command panel AX for desktop TFT up to 24"

AX 6321.050

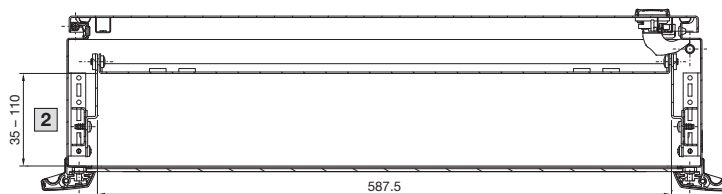
Section B – B



1 Monitor infinitely adjustable in the height



Section A – A



2 Monitor infinitely adjustable in the depth

# Rittal – The System.

Faster – better – everywhere.

- Enclosures
- Power Distribution
- Climate Control
- IT Infrastructure
- Software & Services

You can find the contact details of all Rittal companies throughout the world here.



[www.rittal.com/contact](http://www.rittal.com/contact)

XWWW00195EN2008

ENCLOSURES

POWER DISTRIBUTION

CLIMATE CONTROL

IT INFRASTRUCTURE

SOFTWARE & SERVICES



FRIEDHELM LOH GROUP



## X-ON Electronics

Largest Supplier of Electrical and Electronic Components

*Click to view similar products for [Electrical Enclosures](#) category:*

*Click to view products by [Rittal](#) manufacturer:*

Other Similar products are found below :

[MR-25L+](#) [30-8739](#) [30-9715](#) [A242012LP](#) [A16N12BLP](#) [81641001](#) [9511096](#) [9511016](#) [127-906](#) [79021101](#) [73383001](#) [EKIV 17](#) [EKIV 37](#)  
[19817001](#) [2327000](#) [2534100](#) [2561400](#) [18600801](#) [19001201](#) [19001301](#) [19501001](#) [19500601](#) [19701101](#) [19600901](#) [TM 0808](#) [TRH 24](#)  
[A317SEAL](#) [A3735SEAL](#) [A3783SEAL](#) [G1189G\(BC\)](#) [UV 150 K](#) [UV 250 K](#) [X10 R LGR-TR](#) [X01 UT G LGR](#) [X16C LGR-TR](#) [X25C LGR-](#)  
[TR](#) [T 160 OE HD LGR](#) [T 350 OE HD LGR](#) [SDB 03 PS](#) [P2018SEAL](#) [12.0000011](#) [12.0000012](#) [04.3080000](#) [04.3090000](#) [KM-326G](#) [2763-00](#)  
[2765-00](#) [20500703-D101000](#) [PK-60/60M ORANGE](#) [IMT35026](#)