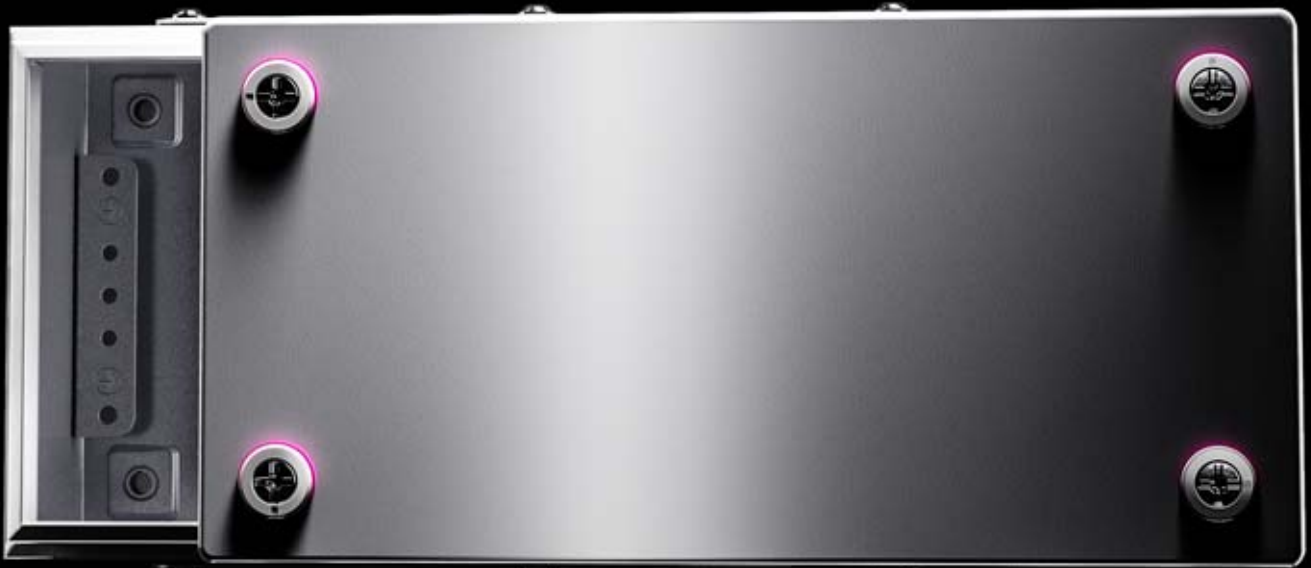


Rittal – The System.

Faster – better – everywhere.

SMALL ENCLOSURES KX

Technical details



ENCLOSURES

POWER DISTRIBUTION

CLIMATE CONTROL

IT INFRASTRUCTURE

SOFTWARE & SERVICES



FRIEDHELM LOH GROUP

Small enclosures

Contents

Small enclosures KX, sheet steel

Terminal box KX, without gland plate

| Model No. KX | Width mm | Height mm | Depth mm | Page |
|--------------|----------|-----------|----------|-------|
| 1500.000 | 150 | 150 | 120 | 4 – 5 |
| 1501.000 | 300 | 150 | 120 | 4 – 5 |
| 1502.000 | 200 | 200 | 120 | 4 – 5 |
| 1503.000 | 300 | 200 | 120 | 4 – 5 |
| 1504.000 | 400 | 200 | 120 | 4 – 5 |
| 1505.000 | 500 | 200 | 120 | 4 – 5 |
| 1506.000 | 600 | 200 | 120 | 4 – 5 |
| 1507.000 | 300 | 300 | 120 | 4 – 5 |
| 1508.000 | 400 | 300 | 120 | 4 – 5 |
| 1509.000 | 500 | 300 | 120 | 4 – 5 |
| 1510.000 | 600 | 300 | 120 | 4 – 5 |
| 1511.000 | 400 | 400 | 120 | 4 – 5 |
| 1512.000 | 600 | 400 | 120 | 4 – 5 |
| 1513.000 | 800 | 400 | 120 | 4 – 5 |
| 1514.000 | 150 | 150 | 80 | 4 – 5 |
| 1515.000 | 300 | 150 | 80 | 4 – 5 |
| 1516.000 | 200 | 200 | 80 | 4 – 5 |
| 1517.000 | 300 | 200 | 80 | 4 – 5 |
| 1518.000 | 400 | 200 | 80 | 4 – 5 |
| 1527.000 | 800 | 200 | 120 | 4 – 5 |
| 1528.000 | 200 | 150 | 80 | 4 – 5 |
| 1529.000 | 200 | 150 | 120 | 4 – 5 |
| 1589.000 | 400 | 150 | 120 | 4 – 5 |

Terminal boxes KX, with gland plate

| Model No. KX | Width mm | Height mm | Depth mm | Page |
|--------------|----------|-----------|----------|-------|
| 1530.000 | 300 | 150 | 120 | 4 – 5 |
| 1531.000 | 300 | 200 | 120 | 4 – 5 |
| 1532.000 | 400 | 200 | 120 | 4 – 5 |
| 1533.000 | 500 | 200 | 120 | 4 – 5 |
| 1535.000 | 300 | 300 | 120 | 4 – 5 |
| 1536.000 | 400 | 300 | 120 | 4 – 5 |
| 1537.000 | 500 | 300 | 120 | 4 – 5 |
| 1538.000 | 600 | 300 | 120 | 4 – 5 |
| 1539.000 | 400 | 400 | 120 | 4 – 5 |
| 1540.000 | 600 | 400 | 120 | 4 – 5 |
| 1541.000 | 800 | 400 | 120 | 4 – 5 |

E-Box KX

| Model No. KX | Width mm | Height mm | Depth mm | Page |
|--------------|----------|-----------|----------|-------|
| 1545.000 | 150 | 300 | 80 | 6 – 7 |
| 1546.000 | 200 | 200 | 80 | 6 – 7 |
| 1547.000 | 200 | 400 | 80 | 6 – 7 |
| 1548.000 | 150 | 300 | 120 | 6 – 7 |
| 1549.000 | 200 | 200 | 120 | 6 – 7 |
| 1550.000 | 200 | 400 | 120 | 6 – 7 |
| 1551.000 | 150 | 150 | 80 | 6 – 7 |
| 1552.000 | 200 | 300 | 80 | 6 – 7 |
| 1553.000 | 150 | 150 | 120 | 6 – 7 |
| 1554.000 | 200 | 300 | 120 | 6 – 7 |
| 1555.000 | 300 | 300 | 120 | 6 – 7 |
| 1556.000 | 300 | 400 | 120 | 6 – 7 |
| 1557.000 | 200 | 500 | 120 | 6 – 7 |
| 1574.000 | 200 | 300 | 155 | 6 – 7 |
| 1575.000 | 300 | 300 | 155 | 6 – 7 |
| 1576.000 | 380 | 300 | 155 | 6 – 7 |
| 1577.000 | 300 | 400 | 155 | 6 – 7 |
| 1578.000 | 300 | 600 | 155 | 6 – 7 |
| 1579.000 | 300 | 800 | 155 | 6 – 7 |

Bus enclosure KX

| Model No. KX | Width mm | Height mm | Depth mm | Page |
|--------------|----------|-----------|----------|------|
| 1610.000 | 400 | 200 | 155 | 8 |
| 1611.000 | 400 | 300 | 155 | 8 |
| 1612.000 | 600 | 300 | 155 | 8 |
| 1613.000 | 800 | 300 | 155 | 8 |

Small enclosures KX, stainless steel

Terminal boxes KX, without gland plate

| Model No. KX | Width mm | Height mm | Depth mm | Page |
|--------------|----------|-----------|----------|------|
| 1560.000 | 150 | 150 | 80 | 9 |
| 1561.000 | 300 | 150 | 80 | 9 |
| 1562.000 | 200 | 200 | 80 | 9 |
| 1563.000 | 300 | 200 | 80 | 9 |
| 1564.000 | 150 | 150 | 120 | 9 |
| 1565.000 | 200 | 200 | 120 | 9 |
| 1566.000 | 300 | 200 | 120 | 9 |
| 1567.000 | 300 | 300 | 120 | 9 |
| 1568.000 | 400 | 200 | 120 | 9 |
| 1569.000 | 400 | 300 | 120 | 9 |

E-Box KX

| Model No. KX | Width mm | Height mm | Depth mm | Page |
|--------------|----------|-----------|----------|------|
| 1301.000 | 200 | 300 | 155 | 10 |
| 1584.000 | 200 | 300 | 120 | 10 |
| 1587.000 | 200 | 300 | 155 | 10 |
| 1588.000 | 380 | 300 | 155 | 10 |

Bus enclosure KX

| Model No. KX | Width mm | Height mm | Depth mm | Page |
|--------------|----------|-----------|----------|------|
| 1583.000 | 200 | 300 | 80 | 11 |
| 1585.000 | 400 | 200 | 120 | 11 |
| 1586.000 | 600 | 200 | 120 | 11 |

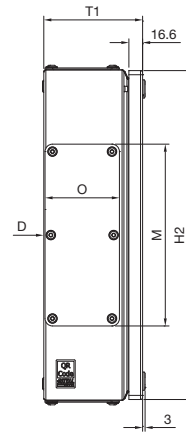
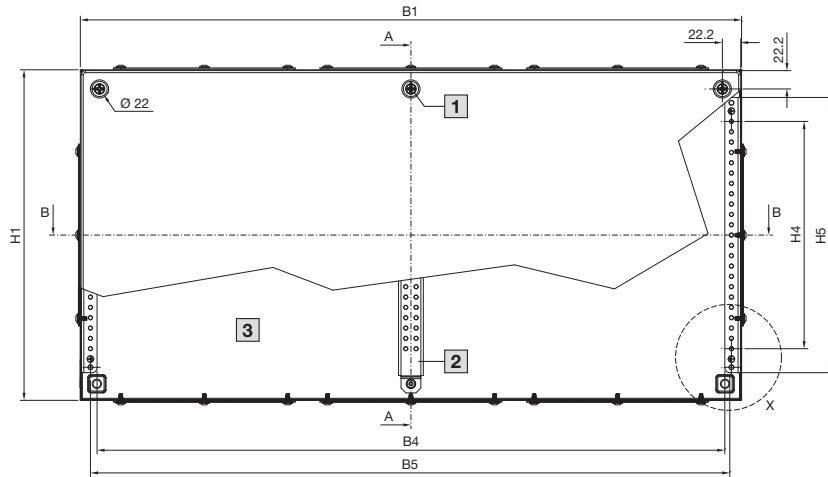
Small enclosures



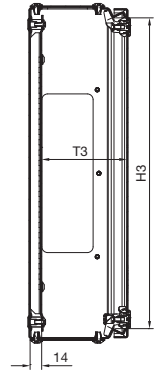
Small enclosures

Small enclosures KX, sheet steel

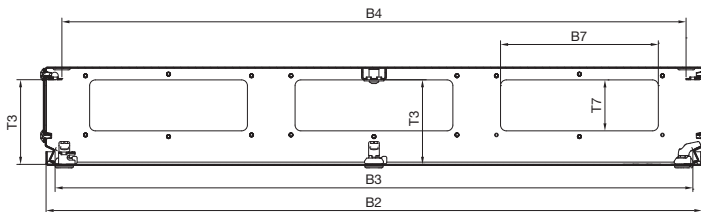
Terminal boxes KX



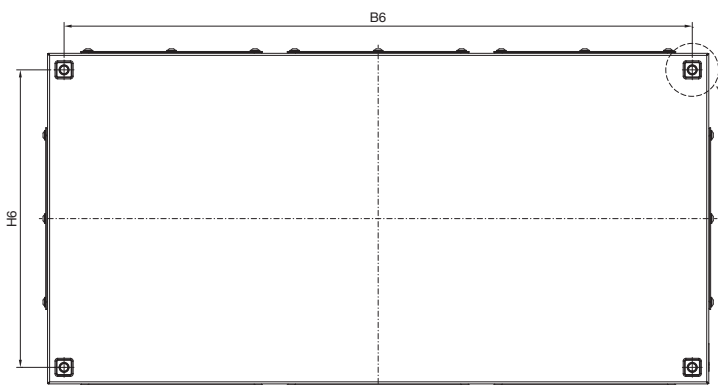
Section A - A



Section B - B



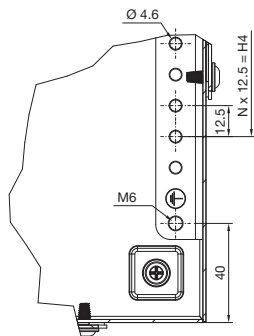
View D



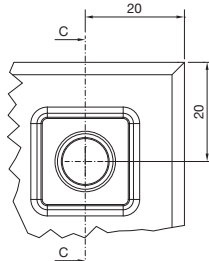
- 1 Central lock where $B1 > 500$ mm
- 2 Only for KX 1513.000
- 3 Internal view

Terminal boxes KX

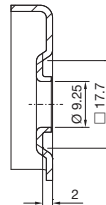
Detail X



Detail Y



Section C – C



Enclosure

- B1 = Enclosure width (overall width)
- B2 = Cover width
- B3 = Clearance width, enclosure opening
- B4 = Clearance width between L brackets
- B5 = Distance between axes of the mounting holes in the L brackets
- B6 = Mounting distance, enclosures
- B7 = Gland plate opening
- H1 = Enclosure height (overall height)
- H2 = Cover height
- H3 = Clearance height, enclosure opening
- H4 = Overall height, 12.5 mm pitch pattern of holes
- H5 = Clearance of L brackets
- H6 = Mounting distance, enclosures
- N = No. of 12.5 mm pitch patterns of holes
- T1 = Overall depth
- T3 = Installation depth (distance from inside of cover to L bracket or central bar)
- T7 = Gland plate opening

Gland plate

- M = Gland plate width
- O = Gland plate depth

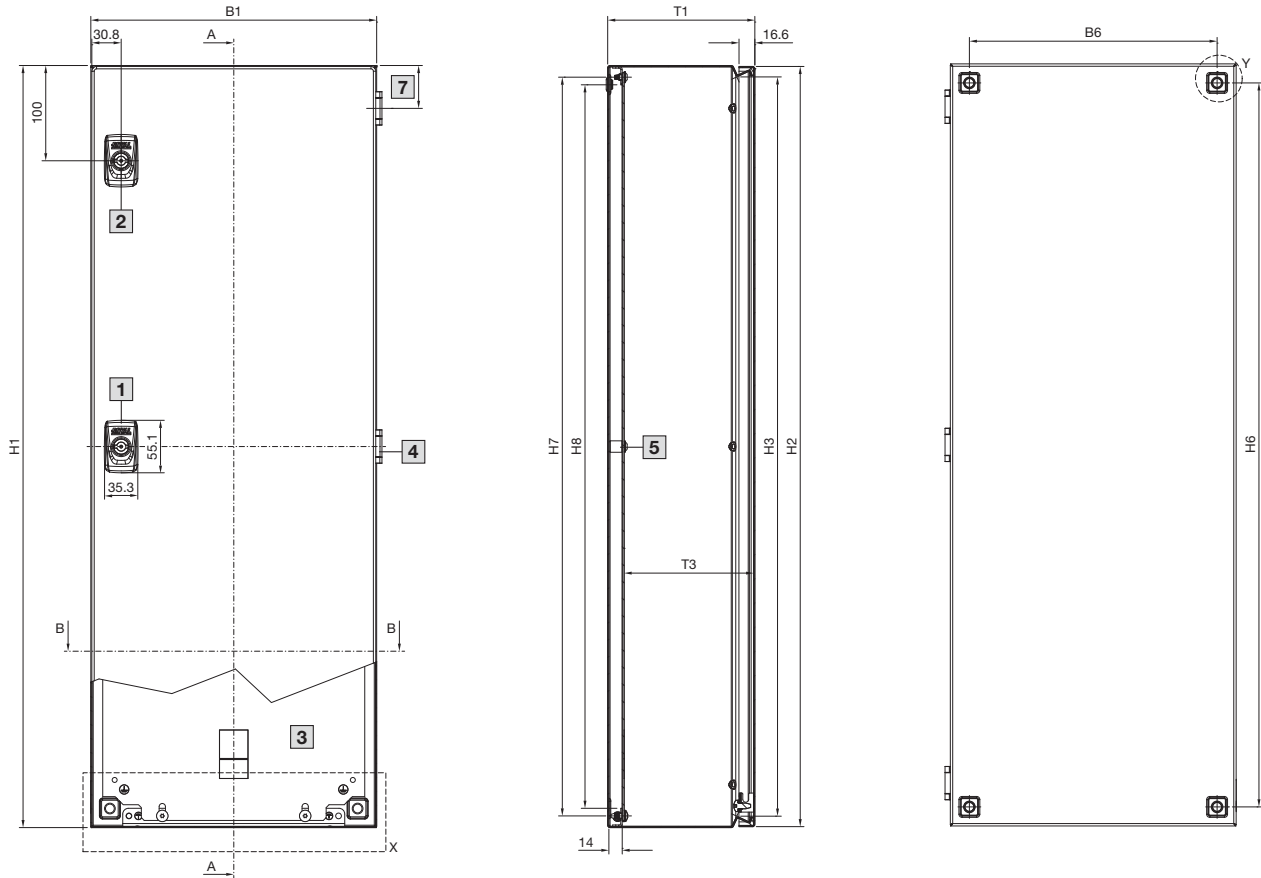
| Model No. KX | Width dimensions mm | | | | | | | Height dimensions mm | | | | | | | Depth dimensions mm | | | Gland plate | | |
|-----------------|---------------------|-----|-------|-------|-------|-----|-----|----------------------|-----|-------|-----|-----|-----|----|---------------------|-------|----|-------------|----|------|
| | B1 | B2 | B3 | B4 | B5 | B6 | B7 | H1 | H2 | H3 | H4 | H5 | H6 | N | T1 | T3 | T7 | M | O | Qty. |
| 1500.000 | 150 | 148 | 127.7 | 109.5 | 125.5 | 110 | - | 150 | 148 | 127.7 | 25 | 83 | 110 | 2 | 120 | 103.5 | - | - | - | - |
| 1501.000 | 300 | 298 | 277.7 | 259.5 | 275.5 | 260 | - | 150 | 148 | 127.7 | 25 | 83 | 110 | 2 | 120 | 103.5 | - | - | - | - |
| 1502.000 | 200 | 198 | 177.7 | 159.5 | 175.5 | 160 | - | 200 | 198 | 177.7 | 75 | 133 | 160 | 6 | 120 | 103.5 | - | - | - | - |
| 1503.000 | 300 | 298 | 277.7 | 259.5 | 275.5 | 260 | - | 200 | 198 | 177.7 | 75 | 133 | 160 | 6 | 120 | 103.5 | - | - | - | - |
| 1504.000 | 400 | 398 | 377.7 | 359.5 | 375.5 | 360 | - | 200 | 198 | 177.7 | 75 | 133 | 160 | 6 | 120 | 103.5 | - | - | - | - |
| 1505.000 | 500 | 498 | 477.7 | 459.5 | 475.5 | 460 | - | 200 | 198 | 177.7 | 75 | 133 | 160 | 6 | 120 | 103.5 | - | - | - | - |
| 1506.000 | 600 | 598 | 577.7 | 559.5 | 575.5 | 560 | - | 200 | 198 | 177.7 | 75 | 133 | 160 | 6 | 120 | 103.5 | - | - | - | - |
| 1507.000 | 300 | 298 | 277.7 | 259.5 | 275.5 | 260 | - | 300 | 298 | 277.7 | 175 | 233 | 260 | 14 | 120 | 103.5 | - | - | - | - |
| 1508.000 | 400 | 398 | 377.7 | 359.5 | 375.5 | 360 | - | 300 | 298 | 277.7 | 175 | 233 | 260 | 14 | 120 | 103.5 | - | - | - | - |
| 1509.000 | 500 | 498 | 477.7 | 459.5 | 475.5 | 460 | - | 300 | 298 | 277.7 | 175 | 233 | 260 | 14 | 120 | 103.5 | - | - | - | - |
| 1510.000 | 600 | 598 | 577.7 | 559.5 | 575.5 | 560 | - | 300 | 298 | 277.7 | 175 | 233 | 260 | 14 | 120 | 103.5 | - | - | - | - |
| 1511.000 | 400 | 398 | 377.7 | 359.5 | 375.5 | 360 | - | 400 | 398 | 377.7 | 275 | 333 | 360 | 22 | 120 | 103.5 | - | - | - | - |
| 1512.000 | 600 | 598 | 577.7 | 559.5 | 575.5 | 560 | - | 400 | 398 | 377.7 | 275 | 333 | 360 | 22 | 120 | 103.5 | - | - | - | - |
| 1513.000 | 800 | 798 | 777.7 | 759.5 | 775.5 | 760 | - | 400 | 398 | 377.7 | 275 | 333 | 360 | 22 | 120 | 103.5 | - | - | - | - |
| 1514.000 | 150 | 148 | 127.7 | 109.5 | 125.5 | 110 | - | 150 | 148 | 127.7 | 25 | 83 | 110 | 2 | 80 | 63.5 | - | - | - | - |
| 1515.000 | 300 | 298 | 277.7 | 259.5 | 275.5 | 260 | - | 150 | 148 | 127.7 | 25 | 83 | 110 | 2 | 80 | 63.5 | - | - | - | - |
| 1516.000 | 200 | 198 | 177.7 | 159.5 | 175.5 | 160 | - | 200 | 198 | 177.7 | 75 | 133 | 160 | 6 | 80 | 63.5 | - | - | - | - |
| 1517.000 | 300 | 298 | 277.7 | 259.5 | 275.5 | 260 | - | 200 | 198 | 177.7 | 75 | 133 | 160 | 6 | 80 | 63.5 | - | - | - | - |
| 1518.000 | 400 | 398 | 377.7 | 359.5 | 375.5 | 360 | - | 200 | 198 | 177.7 | 75 | 133 | 160 | 6 | 80 | 63.5 | - | - | - | - |
| 1527.000 | 800 | 798 | 777.7 | 759.5 | 775.5 | 760 | - | 200 | 198 | 177.7 | 75 | 133 | 160 | 6 | 120 | 103.5 | - | - | - | - |
| 1528.000 | 200 | 198 | 177.7 | 159.5 | 175.5 | 160 | - | 150 | 148 | 127.7 | 25 | 83 | 110 | 2 | 80 | 63.5 | - | - | - | - |
| 1529.000 | 200 | 198 | 177.7 | 159.5 | 175.5 | 160 | - | 150 | 148 | 127.7 | 25 | 83 | 110 | 2 | 120 | 103.5 | - | - | - | - |
| 1530.000 | 300 | 298 | 277.7 | 259.5 | 275.5 | 260 | 192 | 150 | 148 | 127.7 | 25 | 83 | 110 | 2 | 120 | 103.5 | 62 | 220 | 72 | 2 |
| 1531.000 | 300 | 298 | 277.7 | 259.5 | 275.5 | 260 | 192 | 200 | 198 | 177.7 | 75 | 133 | 160 | 6 | 120 | 103.5 | 62 | 220 | 72 | 2 |
| 1532.000 | 400 | 398 | 377.7 | 359.5 | 375.5 | 360 | 192 | 200 | 198 | 177.7 | 75 | 133 | 160 | 6 | 120 | 103.5 | 62 | 220 | 72 | 2 |
| 1533.000 | 500 | 498 | 477.7 | 459.5 | 475.5 | 460 | 192 | 200 | 198 | 177.7 | 75 | 133 | 160 | 6 | 120 | 103.5 | 62 | 220 | 72 | 4 |
| 1535.000 | 300 | 298 | 277.7 | 259.5 | 275.5 | 260 | 192 | 300 | 298 | 277.7 | 175 | 233 | 260 | 14 | 120 | 103.5 | 62 | 220 | 72 | 4 |
| 1536.000 | 400 | 398 | 377.7 | 359.5 | 375.5 | 360 | 192 | 300 | 298 | 277.7 | 175 | 233 | 260 | 14 | 120 | 103.5 | 62 | 220 | 72 | 4 |
| 1537.000 | 500 | 498 | 477.7 | 459.5 | 475.5 | 460 | 192 | 300 | 298 | 277.7 | 175 | 233 | 260 | 14 | 120 | 103.5 | 62 | 220 | 72 | 6 |
| 1538.000 | 600 | 598 | 577.7 | 559.5 | 575.5 | 560 | 192 | 300 | 298 | 277.7 | 175 | 233 | 260 | 14 | 120 | 103.5 | 62 | 220 | 72 | 6 |
| 1539.000 | 400 | 398 | 377.7 | 359.5 | 375.5 | 360 | 192 | 400 | 398 | 377.7 | 275 | 333 | 360 | 22 | 120 | 103.5 | 62 | 220 | 72 | 4 |
| 1540.000 | 600 | 598 | 577.7 | 559.5 | 575.5 | 560 | 192 | 400 | 398 | 377.7 | 275 | 333 | 360 | 22 | 120 | 103.5 | 62 | 220 | 72 | 6 |
| 1541.000 | 800 | 798 | 777.7 | 759.5 | 775.5 | 760 | 192 | 400 | 398 | 377.7 | 275 | 333 | 360 | 22 | 120 | 103.5 | 62 | 220 | 72 | 8 |
| 1589.000 | 400 | 398 | 377.7 | 359.5 | 375.5 | 360 | - | 150 | 148 | 127.7 | 25 | 83 | 110 | 2 | 120 | 103.5 | - | - | - | - |

Small enclosures

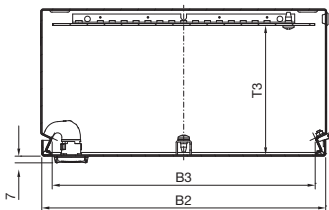
Small enclosures KX, sheet steel

E-Box KX

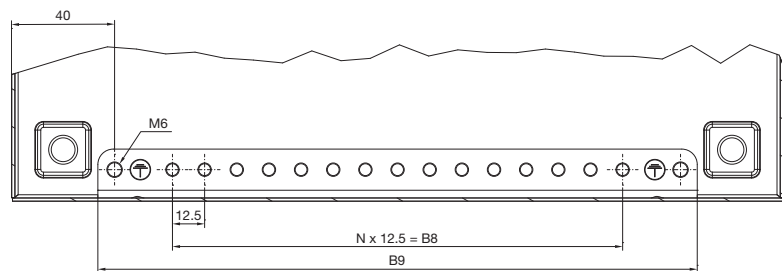
Section A – A



Section B – B

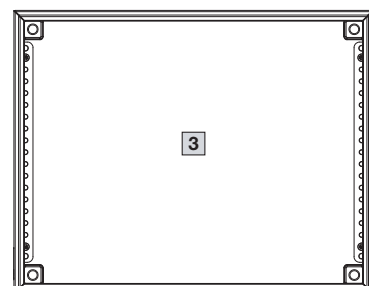


Detail X



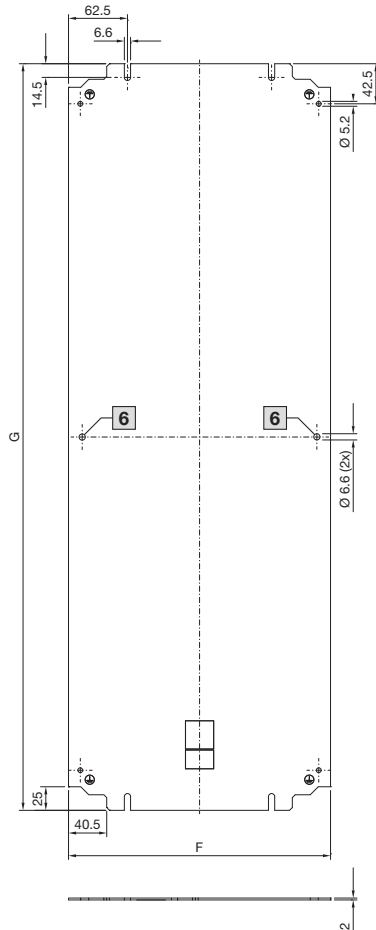
- 1 One central cam where $H1 \leq 400$ mm
- 2 Two cams where $H1 > 400$ mm
- 3 Internal view
- 4 Central hinge where $H1 > 600$ mm
- 5 Central bolt, only where $H1 > 800$ mm
- 6 Central holes, only where $H1 > 800$ mm
- 7 33 mm where $H1 = 150$ mm
44 mm where $H1 > 150$ mm

KX 1576.000
Interior installation rotated
through 90°
(L bracket and mounting plate
attachment left and right)

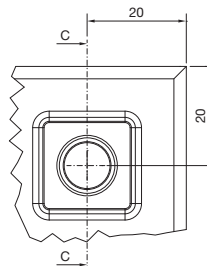


E-Box KX

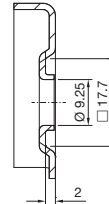
Mounting plate



Detail Y



Section C - C



Enclosure

- B1 = Enclosure width (overall width)
- B2 = Door width
- B3 = Clearance width, enclosure opening
- B6 = Mounting distance, enclosures
- B8 = Overall width, 12.5 mm pitch pattern of holes
- H9 = Clearance of L brackets
- N = No. of 12.5 mm pitch patterns of holes
- H1 = Enclosure height (overall height)
- H2 = Door height
- H3 = Clearance height, enclosure opening
- H6 = Mounting distance, enclosures
- H7 = Distance between axes of the mounting holes in the L brackets
- B4 = Clearance height between L brackets
- T1 = Overall depth
- T3 = Installation depth (distance from inside of door to mounting plate)

Mounting plate

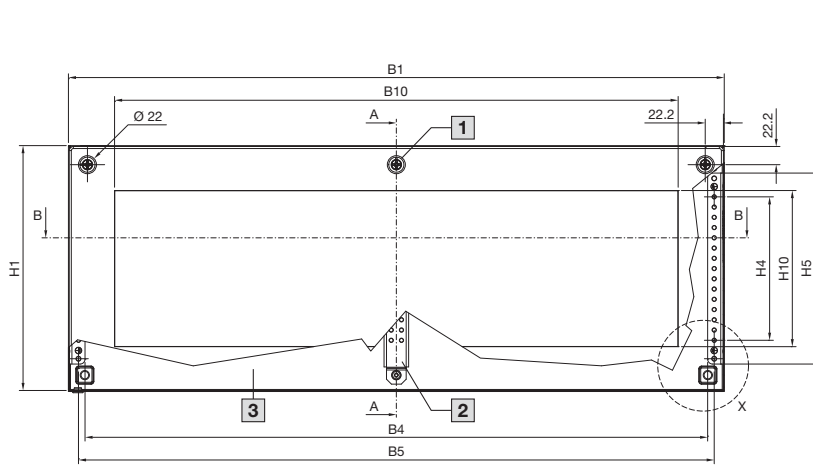
- F = Mounting plate width
- G = Mounting plate height

| Model No. KX | Width dimensions mm | | | | | | | Height dimensions mm | | | | | | Depth dimensions mm | | Mounting plate mm | |
|-----------------|------------------------|-----|-------|-----|-----|-----|----|-------------------------|-----|-------|-----|-----|-----|------------------------|-------|----------------------|-----|
| | B1 | B2 | B3 | B6 | B8 | B9 | N | H1 | H2 | H3 | H6 | H7 | H8 | T1 | T3 | F | G |
| 1545.000 | 150 | 148 | 127.7 | 110 | 25 | 83 | 2 | 300 | 298 | 277.7 | 260 | 275 | 259 | 80 | 60.9 | 125 | 285 |
| 1546.000 | 200 | 198 | 177.7 | 160 | 75 | 133 | 6 | 200 | 198 | 177.7 | 160 | 175 | 159 | 80 | 60.9 | 175 | 185 |
| 1547.000 | 200 | 198 | 177.7 | 160 | 75 | 133 | 6 | 400 | 398 | 377.7 | 360 | 375 | 359 | 80 | 60.9 | 175 | 385 |
| 1548.000 | 150 | 148 | 127.7 | 110 | 25 | 83 | 2 | 300 | 298 | 277.7 | 260 | 275 | 259 | 120 | 100.9 | 125 | 285 |
| 1549.000 | 200 | 198 | 177.7 | 160 | 75 | 133 | 6 | 200 | 198 | 177.7 | 160 | 175 | 159 | 120 | 100.9 | 175 | 185 |
| 1550.000 | 200 | 198 | 177.7 | 160 | 75 | 133 | 6 | 400 | 298 | 377.7 | 360 | 375 | 359 | 120 | 100.9 | 175 | 385 |
| 1551.000 | 150 | 148 | 127.7 | 110 | 25 | 83 | 2 | 150 | 148 | 127.7 | 110 | 125 | 109 | 80 | 60.9 | 125 | 135 |
| 1552.000 | 200 | 198 | 177.7 | 160 | 75 | 133 | 6 | 300 | 298 | 277.7 | 260 | 275 | 259 | 80 | 60.9 | 175 | 285 |
| 1553.000 | 150 | 148 | 127.7 | 110 | 25 | 83 | 2 | 150 | 148 | 127.7 | 110 | 125 | 109 | 120 | 100.9 | 125 | 135 |
| 1554.000 | 200 | 198 | 177.7 | 160 | 75 | 133 | 6 | 300 | 298 | 277.7 | 260 | 275 | 259 | 120 | 100.9 | 175 | 285 |
| 1555.000 | 300 | 298 | 277.7 | 260 | 175 | 233 | 14 | 300 | 298 | 277.7 | 260 | 275 | 259 | 120 | 100.9 | 275 | 285 |
| 1556.000 | 300 | 298 | 277.7 | 260 | 175 | 233 | 14 | 400 | 398 | 377.7 | 360 | 375 | 359 | 120 | 100.9 | 275 | 385 |
| 1557.000 | 200 | 198 | 177.7 | 160 | 75 | 133 | 6 | 500 | 498 | 477.7 | 460 | 475 | 459 | 120 | 100.9 | 175 | 485 |
| 1574.000 | 200 | 198 | 177.7 | 160 | 75 | 133 | 6 | 300 | 298 | 277.7 | 260 | 275 | 259 | 155 | 135.9 | 175 | 285 |
| 1575.000 | 300 | 298 | 277.7 | 260 | 175 | 233 | 14 | 300 | 298 | 277.7 | 260 | 275 | 259 | 155 | 135.9 | 275 | 285 |
| 1576.000 | 380 | 378 | 357.7 | 340 | 275 | 333 | 22 | 300 | 298 | 277.7 | 260 | 275 | 259 | 155 | 135.9 | 275 | 365 |
| 1577.000 | 300 | 298 | 277.7 | 260 | 175 | 233 | 14 | 400 | 398 | 377.7 | 360 | 375 | 359 | 155 | 135.9 | 275 | 385 |
| 1578.000 | 300 | 298 | 277.7 | 260 | 175 | 233 | 14 | 600 | 598 | 577.7 | 560 | 575 | 559 | 155 | 135.9 | 275 | 585 |
| 1579.000 | 300 | 298 | 277.7 | 260 | 175 | 233 | 14 | 800 | 798 | 777.7 | 760 | 775 | 759 | 155 | 135.9 | 275 | 785 |

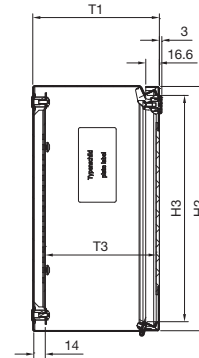
Small enclosures

Small enclosures KX, sheet steel

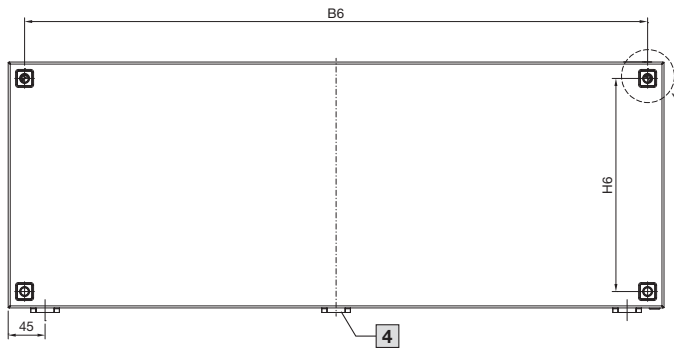
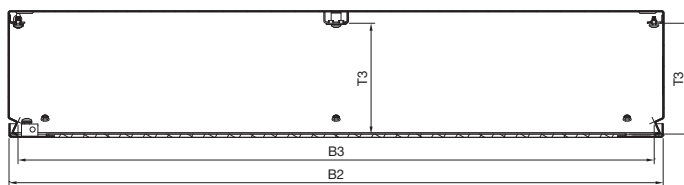
Bus enclosure KX



Section A – A



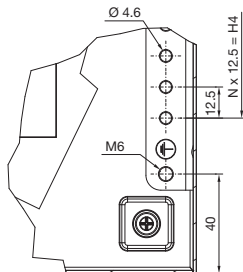
Section B – B



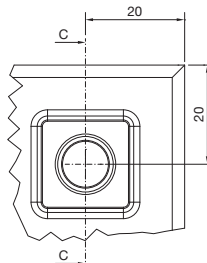
Enclosure

- B1 = Enclosure width (overall width)
- B2 = Cover width
- B3 = Clearance width, enclosure opening
- B4 = Clearance width between L brackets
- B5 = Distance between axes of the mounting holes in the L brackets
- B6 = Mounting distance, enclosures
- B10 = Viewing window width
- H1 = Enclosure height (overall height)
- H2 = Cover height
- H3 = Clearance height, enclosure opening
- H4 = Overall height, 12.5 mm pitch pattern of holes
- H5 = Clearance of L brackets
- H6 = Mounting distance, enclosures
- H10 = Viewing window height
- N = No. of 12.5 mm pitch patterns of holes
- T1 = Overall depth
- T3 = Installation depth
(distance from inside of viewing window cover to L bracket or central bar)

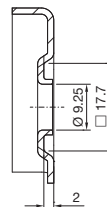
Detail X



Detail Y



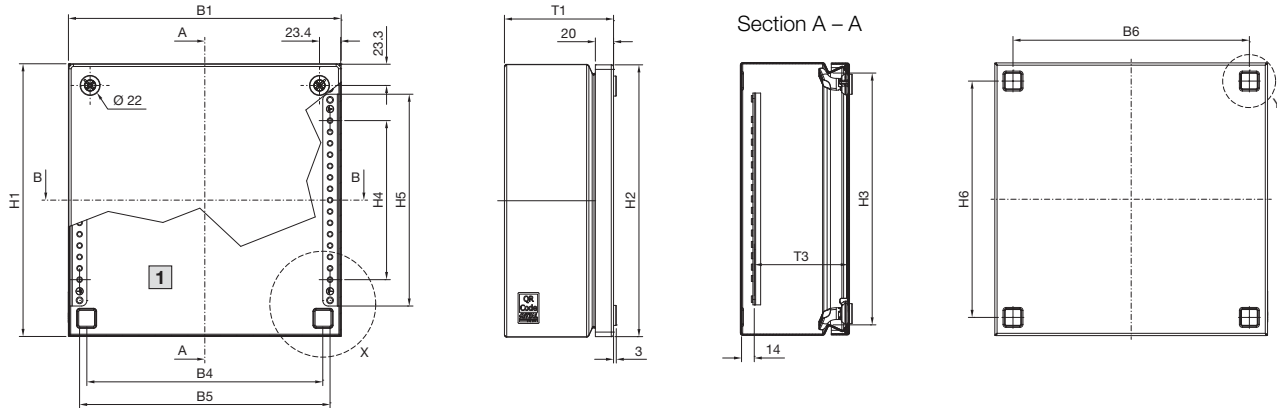
Section C – C



- 1 Central lock where B1 > 500 mm
- 2 Only for KX 1613.000
- 3 Internal view
- 4 Central hinge where B1 > 600 mm

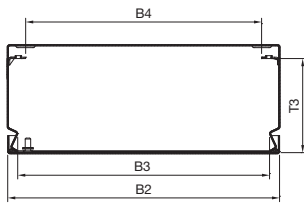
| Model No. KX | Width dimensions mm | | | | | | | Height dimensions mm | | | | | | | | Depth dimensions mm | |
|-----------------|------------------------|-----|-------|-------|-------|-----|-------|-------------------------|-----|-----|-----|-----|-----|-------|----|---------------------------|-------|
| | B1 | B2 | B3 | B4 | B5 | B6 | B10 | H1 | H2 | H3 | H4 | H5 | H6 | H10 | N | T1 | T3 |
| 1610.000 | 400 | 398 | 377.7 | 359.5 | 375.5 | 360 | 287.5 | 200 | 198 | 176 | 75 | 133 | 160 | 90.5 | 6 | 155 | 135.2 |
| 1611.000 | 400 | 398 | 377.7 | 359.5 | 375.5 | 360 | 287.5 | 300 | 298 | 276 | 175 | 233 | 260 | 190.5 | 14 | 155 | 135.2 |
| 1612.000 | 600 | 598 | 577.7 | 559.5 | 575.5 | 560 | 487.5 | 300 | 298 | 276 | 175 | 233 | 260 | 190.5 | 14 | 155 | 135.2 |
| 1613.000 | 800 | 798 | 777.7 | 759.5 | 775.5 | 760 | 687.5 | 300 | 298 | 276 | 175 | 233 | 260 | 190.5 | 14 | 155 | 135.2 |

Terminal boxes KX

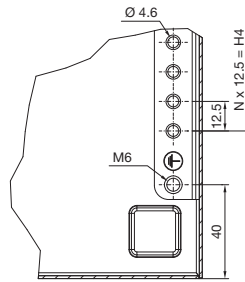


3 Internal view

Section B – B



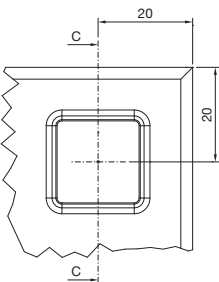
Detail X



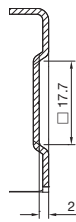
Enclosure

- B1 = Enclosure width (overall width)
- B2 = Cover width
- B3 = Clearance width, enclosure opening
- B4 = Clearance width between L brackets
- B5 = Distance between axes of the mounting holes in the L brackets
- B6 = Mounting distance, enclosures
- H1 = Enclosure height (overall height)
- H2 = Cover height
- H3 = Clearance height, enclosure opening
- H4 = Overall height, 25 mm pitch pattern of holes
- H5 = Clearance of L brackets
- H6 = Mounting distance, enclosures
- N = No. of 25 mm pitch patterns of holes
- T1 = Overall depth
- T3 = Installation depth (distance from inside of cover to L bracket)

Detail Y



Section C – C

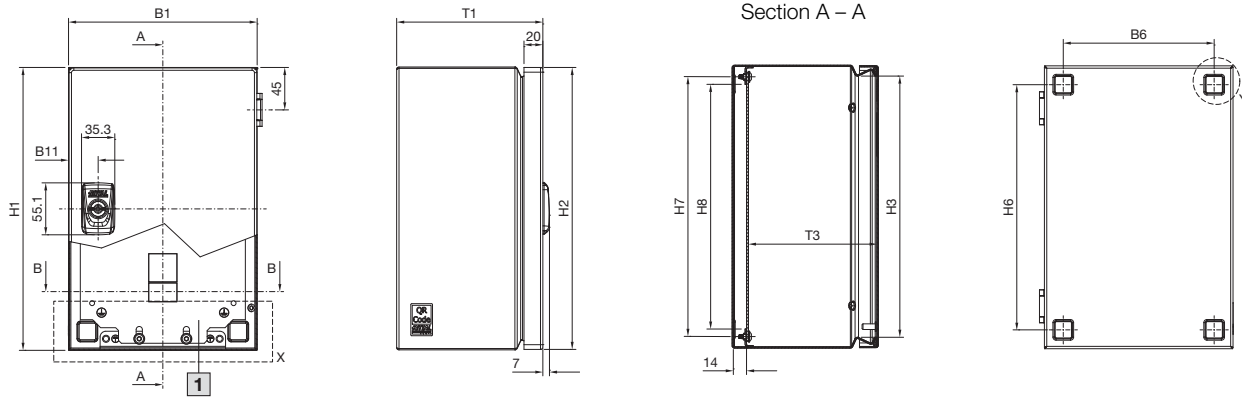


| Model No. KX | Width dimensions mm | | | | | | Height dimensions mm | | | | | | | Depth dimensions mm | |
|-----------------|------------------------|-----|-----|-------|-------|-----|-------------------------|-----|-----|-----|-----|-----|----|------------------------|-------|
| | B1 | B2 | B3 | B4 | B5 | B6 | H1 | H2 | H3 | H4 | H5 | H6 | N | T1 | T3 |
| 1560.000 | 150 | 149 | 127 | 109.5 | 125.5 | 110 | 150 | 149 | 127 | 25 | 83 | 110 | 2 | 80 | 63.5 |
| 1561.000 | 300 | 299 | 277 | 259.5 | 275.5 | 260 | 150 | 149 | 127 | 25 | 83 | 110 | 2 | 80 | 63.5 |
| 1562.000 | 200 | 199 | 177 | 159.5 | 175.5 | 160 | 200 | 199 | 177 | 75 | 133 | 160 | 6 | 80 | 63.5 |
| 1563.000 | 300 | 299 | 277 | 259.5 | 275.5 | 260 | 200 | 199 | 177 | 75 | 133 | 160 | 6 | 80 | 63.5 |
| 1564.000 | 150 | 149 | 127 | 109.5 | 125.5 | 110 | 150 | 149 | 127 | 25 | 83 | 110 | 2 | 120 | 103.5 |
| 1565.000 | 200 | 199 | 177 | 159.5 | 175.5 | 160 | 200 | 199 | 177 | 75 | 133 | 160 | 6 | 120 | 103.5 |
| 1566.000 | 300 | 299 | 277 | 259.5 | 275.5 | 260 | 200 | 199 | 177 | 75 | 133 | 160 | 6 | 120 | 103.5 |
| 1567.000 | 300 | 299 | 277 | 259.5 | 275.5 | 260 | 300 | 299 | 277 | 175 | 233 | 260 | 14 | 120 | 103.5 |
| 1568.000 | 400 | 399 | 377 | 359.5 | 375.5 | 360 | 200 | 199 | 177 | 75 | 133 | 160 | 6 | 120 | 103.5 |
| 1569.000 | 400 | 399 | 377 | 359.5 | 375.5 | 360 | 300 | 299 | 277 | 175 | 233 | 260 | 14 | 120 | 103.5 |

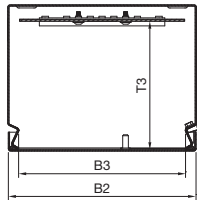
Small enclosures

Small enclosures KX, stainless steel

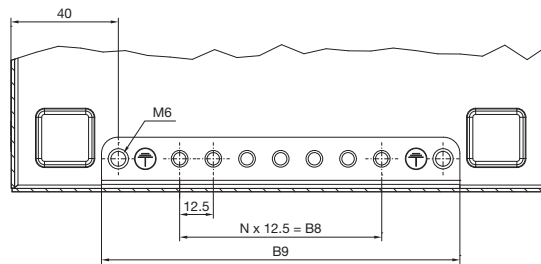
E-Box KX



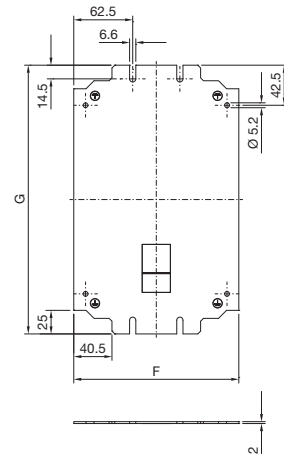
Section B – B



Detail X



Mounting plate



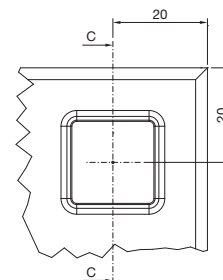
Enclosure

- B1 = Enclosure width (overall width)
- B2 = Door width
- B3 = Clearance width, enclosure opening
- B6 = Mounting distance, enclosures
- B8 = Overall width, 12.5 mm pitch pattern of holes
- H9 = Clearance of L brackets
- B11 = Distance from centre of lock cut-out to door edge
- N = No. of 12.5 mm pitch patterns of holes
- H1 = Enclosure height (overall height)
- H2 = Door height
- H3 = Clearance height, enclosure opening
- H6 = Mounting distance, enclosures
- H7 = Distance between axes of the mounting holes in the L brackets
- B4 = Clearance height between L brackets
- T1 = Overall depth
- T3 = Installation depth (distance from inside of door to L bracket)

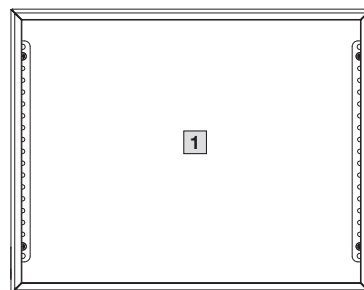
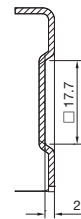
KX 1588.000

Interior installation rotated through 90°
(L bracket and mounting plate attachment left and right)

Detail Y



Section C – C



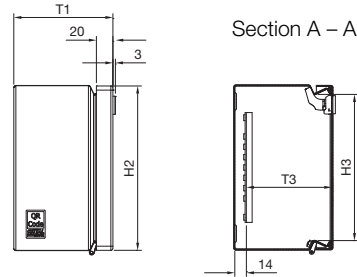
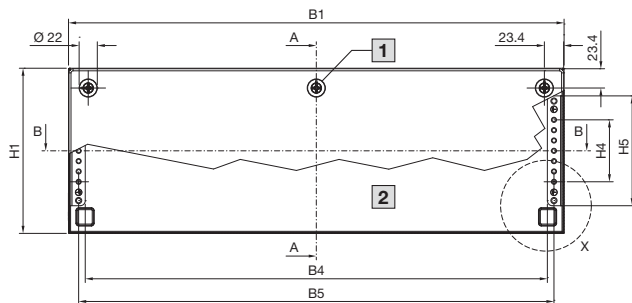
3 Internal view

Mounting plate

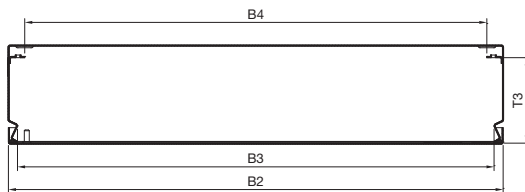
- F = Mounting plate width
- G = Mounting plate height

| Model No. KX | Width dimensions mm | | | | | | | | Height dimensions mm | | | | | | Depth dimensions mm | | Mounting plate mm | |
|-----------------|------------------------|-------|-----|-----|-----|-----|------|----|-------------------------|-------|-----|-----|-------|-------|---------------------------|-------|----------------------|-----|
| | B1 | B2 | B3 | B6 | B8 | B9 | B11 | N | H1 | H2 | H3 | H6 | H7 | H8 | T1 | T3 | F | G |
| 1301.000 | 200 | 199.5 | 177 | 160 | 75 | 133 | 31.3 | 6 | 300 | 299.5 | 277 | 260 | 259.5 | 275.5 | 155 | 136.5 | 175 | 285 |
| 1584.000 | 200 | 199 | 177 | 160 | 75 | 133 | 30.8 | 6 | 300 | 299 | 277 | 260 | 259.5 | 275.5 | 120 | 101.5 | 175 | 285 |
| 1587.000 | 200 | 199 | 177 | 160 | 75 | 133 | 30.8 | 6 | 300 | 299 | 277 | 260 | 259.5 | 275.5 | 155 | 136.5 | 175 | 285 |
| 1588.000 | 380 | 379 | 357 | 340 | 175 | 233 | 30.8 | 14 | 300 | 299 | 277 | 260 | 259.5 | 275.5 | 155 | 136.5 | 275 | 365 |

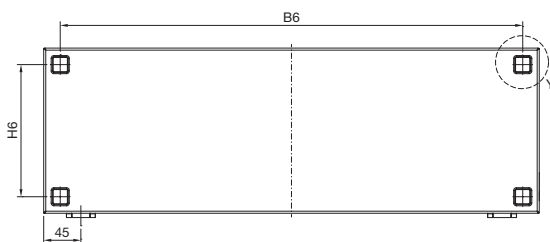
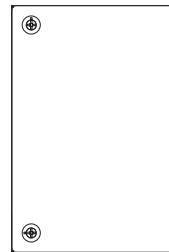
Bus enclosure KX



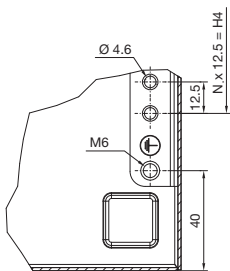
Section B – B



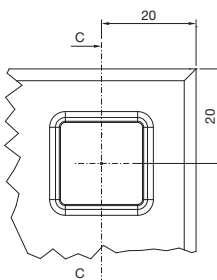
KX 1583.000
Cover rotated through 90°



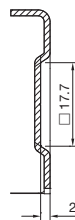
Detail X



Detail Y



Section C – C



Enclosure

- B1 = Enclosure width (overall width)
- B2 = Cover width
- B3 = Clearance width, enclosure opening
- B4 = Clearance width between L brackets
- B5 = Distance between axes of the mounting holes in the L brackets
- B6 = Mounting distance, enclosures
- H1 = Enclosure height (overall height)
- H2 = Cover height
- H3 = Clearance height, enclosure opening
- H4 = Overall height, 25 mm pitch pattern of holes
- H5 = Clearance of L brackets
- H6 = Mounting distance, enclosures
- N = No. of 25 mm pitch patterns of holes
- T1 = Overall depth
- T3 = Installation depth (distance from inside of cover to L bracket)

2 Only for KX 1586.000

3 Internal view

| Model No. KX | Width dimensions mm | | | | | | Height dimensions mm | | | | | | | Depth dimensions mm | |
|-----------------|------------------------|-----|-----|-------|-------|-----|-------------------------|-----|-----|----|-----|-----|---|------------------------|-------|
| | B1 | B2 | B3 | B4 | B5 | B6 | H1 | H2 | H3 | H4 | H5 | H6 | N | T1 | T3 |
| 1583.000 | 200 | 199 | 177 | 159.5 | 175.5 | 160 | 300 | 299 | 277 | 25 | 83 | 260 | 2 | 80 | 63.5 |
| 1585.000 | 400 | 399 | 377 | 359.5 | 375.5 | 360 | 200 | 199 | 177 | 25 | 83 | 160 | 2 | 120 | 103.5 |
| 1586.000 | 600 | 599 | 577 | 559.5 | 575.5 | 560 | 200 | 199 | 177 | 75 | 133 | 160 | 6 | 120 | 103.5 |

Rittal – The System.

Faster – better – everywhere.

- Enclosures
- Power Distribution
- Climate Control
- IT Infrastructure
- Software & Services

You can find the contact details of all Rittal companies throughout the world here.



www.rittal.com/contact

XWWW00196EN1907

ENCLOSURES

POWER DISTRIBUTION

CLIMATE CONTROL

IT INFRASTRUCTURE

SOFTWARE & SERVICES



FRIEDHELM LOH GROUP

X-ON Electronics

Largest Supplier of Electrical and Electronic Components

Click to view similar products for [Enclosures, Boxes & Cases](#) category:

Click to view products by [Rittal](#) manufacturer:

Other Similar products are found below :

[585-R-WH-PK](#) [M-10-PLATED](#) [60566-01-000](#) [HPL-9VB BATT DOOR](#) [M18-PLTD](#) [M-21-PLATED](#) [63310-01-000](#) [6711GSKT](#)
[71884-29-028](#) [LH45-100 Black](#) [72868-510-000](#) [CNS-0000 Black](#) [72883-510-000](#) [CNS-0101 Black](#) [72906-510-000](#) [CNS-0407 Black](#) [73092-](#)
[510-000](#) [CNM-0101 Black](#) [73105-510-000](#) [CNL-0101 Black](#) [73395-510-039](#) [CNS-0006 Bone](#) [74016-510-000](#) [CNL-0006 Black](#) [74257-510-000](#)
[CNL-0004](#) [MDC-1183-PLAIN-ALUM](#) [MDC-1183-PTD](#) [MDC-13104-PTD](#) [MDC-321-PTD](#) [MDC-973-PTD](#) [76](#) [77153-01-028](#) [FLX6030](#)
[83535-01-508](#) [90026-501-000](#) [PS36-200](#) [116-508](#) [120-407](#) [120-910](#) [127-908](#) [130-008](#) [1301170079](#) [1322GSKTEP](#) [1325GSKT3](#) [138-PLAIN](#)
[1434-1210](#) [EAS-500 \(BLACK ANO\)](#) [1804RP-RB-PK](#) [190-005](#) [2202307](#) [KAB3321 BLACK](#) [KAB3421](#) [2697466](#) [S52213](#) [2901123](#) [2901699](#)
[A0645271](#) [A20P20](#) [2106-IR](#) [PERF-850-PLN](#)