

Rittal – The System.

Faster – better – everywhere.

► Plastic cable gland plates with PG knockouts – KL 1581.000

Date : Mar 6, 2019

ENCLOSURES

POWER DISTRIBUTION

CLIMATE CONTROL

IT INFRASTRUCTURE

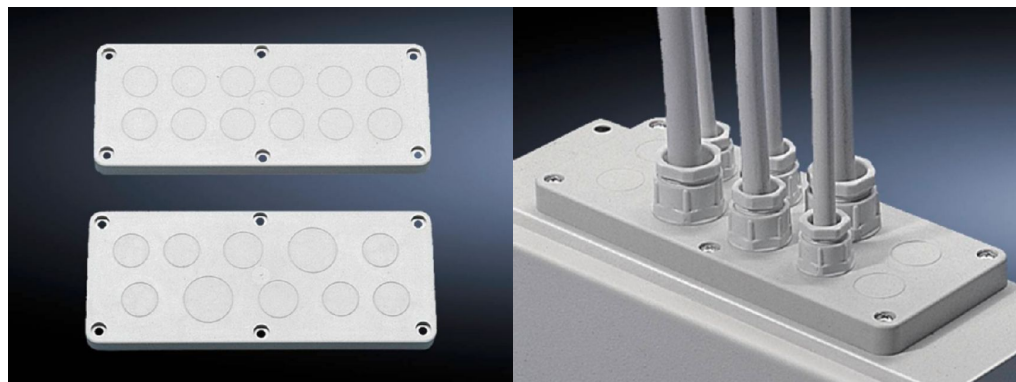
SOFTWARE & SERVICES

FRIEDHELM LOH GROUP



Plastic cable gland plates with PG knockouts – KL 1581.000

created: 06.03.2019 on www.rittal.com/com-en



Product description

Description:	With pre-punched PG holes for cable glands. Use seal for standard gland plates.
Material:	ABS
Colour:	RAL 7035
Protection category IP to IEC 60 529:	IP 55 if installed correctly
Note:	The allocation of gland plate sizes is indicated on the relevant enclosures

Product features

Dimensions:	Width: 220 mm Depth: 90 mm
Operating temperature:	Operation (environment): -40°C...+70°C
Gland plate, size:	2
Cable entry:	Number x PG diameter: 12 x 13.5
Packs of:	5 pc(s).
Weight/pack:	0.6 kg
EAN:	4028177010888

Customs tariff number:	73269098
ETIM 6.0:	EC000211
ETIM 5.0:	EC000211
eCl@ss 8.0/8.1:	27142421
eCl@ss 7.0/7.1:	27189190
eCl@ss 6.0/6.1:	27189190
eCl@ss 5.1/5.1.4:	27189222
Product description:	KL Plastic cable gland plate, with PG knock-outs, WD: 220x90 mm, size: 2, PG knockouts: 13.5
Approvals	
Certificates:	EAC

X-ON Electronics

Largest Supplier of Electrical and Electronic Components

Click to view similar products for [Electrical Enclosures](#) category:

Click to view products by [Rittal](#) manufacturer:

Other Similar products are found below :

[120-902](#) [120-905](#) [120-403](#) [120-475](#) [120-901](#) [127-410](#) [130-007](#) [130-504](#) [130-506](#) [MR-25L+](#) [30-8739](#) [PIP-11774SCREW](#) [30-9715](#) [MR-25LW+](#) [110-407](#) [111-004](#) [111-008](#) [110-402](#) [110-901](#) [110-907](#) [111-002](#) [110-406](#) [110-910](#) [110-404](#) [110-409](#) [110-410](#) [120-405](#) [106-009](#) [106-505](#) [105-401](#) [106-006](#) [104-406](#) [137-002](#) [105-405](#) [111-005](#) [127-909](#) [106-502](#) [130-475](#) [130-503](#) [127-401](#) [106-010](#) [127-455](#) [127-475](#) [110-903](#) [R260-180-300](#) [9511020](#) [9822029](#) [9820014](#) [P61603000P](#) [9823009](#)