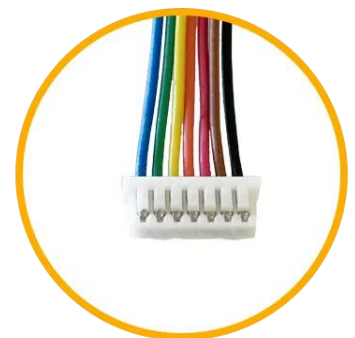




## RVA-0107M-1.25FF

1.25mm Pitch, 7-pin Molex connector, 150mm long, 1:1 Cable

Rev.1.0  
2021-10-25





## 1. REVISION RECORD

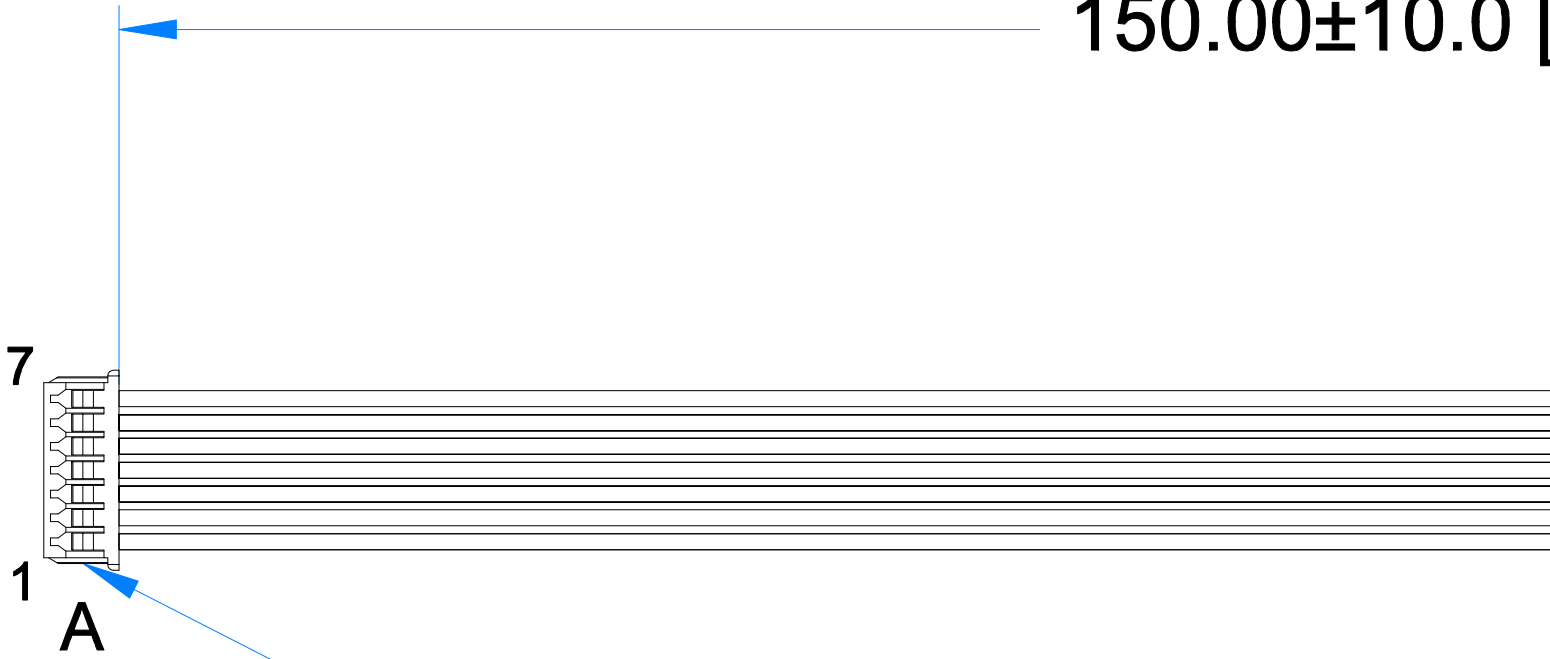
REV NO.	REV DATE	CONTENTS	REMARKS
1.0	2021-10-25	Initial Release	



**2. CONTENTS**

- 1. REVISION RECORD..... 2
- 2. CONTENTS..... 3
- 3. DRAWING..... 4
- 4. WIRE SPECIFICATION ..... 5
  - 4.1 Electrical properties..... 5
  - 4.2 Physical properties..... 5
- 5. CRIMP TERMINALS SEPCIFICATION ..... 6
  - 5.1 Electrical properties..... 6
  - 5.2 Physical properties..... 6
- 6. CRIMP HOUSING SPECIFICATION..... 6
  - 6.1 Physical properties..... 6
- 7. LEGAL INFORMATION..... 7

150.00±10.0 [



CONNECTOR  
MATCHING CONNE

### PIN ASSIGNMENT

A	B	COLOR
1	1	BLACK
2	2	BROWN
3	3	RED
4	4	ORANGE
5	5	YELLOW
6	6	GREEN
7	7	BLUE

#### GENERAL NOTES:

1. PITCH SIZE:1.25MM
2. NUMBER OF PIN: 7
3. 1:1 'SYMMETRIC TYPE WIRING'
4. RoHS COMPLIANT



## 4. WIRE SPECIFICATION

UL Style: 1571 80 °C 30 V

Use: For internal wiring of class 2 circuits in electronic equipment.

ITEM		DESCRIPTION
No. of Cores		1
Conductor	Material	Tinned Copper Wire Stranded
	Construction	28AWG; 7 strands / 0.127 ± 0.008 mm
Insulation	Material	SR-PVC
	Thickness	0.23mm
	Diameter	0.84 ± 0.05mm

### 4.1 Electrical properties

ITEM	DESCRIPTION
Voltage rating	30V
Temperature rating	80 °C
Spark test	Min. AC - 500V
Dielectric strength	Min. AC - 500V/1 min
Insulation resistance	Min 2.5Mega Ohms-km at 20 °C
Conductor resistance	Max 237 Ohms/km at 20 °C

### 4.2 Physical properties

ITEM	DESCRIPTION
Flame test of cable	VW-1
Deformation	Max. 50% @121 °C, 1 hour
Heat shock test	No crack. 50% @121 °C, 1 hour
Cold bend test	No crack. 50% @-10 °C, 1 hour



## 5. CRIMP TERMINALS SEPCIFICATION

### 5.1 Electrical properties

Voltage -Maximum: 125V (RMS)

### 5.2 Physical properties

ITEM	DESCRIPTION
Gender	Female
Material -Metal	Phosphor Bronze
Material - Plating Mating	Gold
Material - Plating Termination	Gold

## 6. CRIMP HOUSING SPECIFICATION

### 6.1 Physical properties

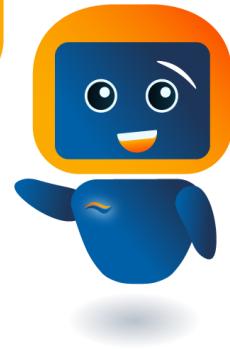
ITEM	DESCRIPTION
Pitch size	1.25mm
No. of pins	7
Flammability	94V-0
Glow-Wire Capable	No
Material - Resin	Polyester
Temperature Range - Operating	-40° C to +105°C



## 7. LEGAL INFORMATION

This document has been issued for informational purposes only. It can be updated or altered without any written notice. Riverdi cannot be held responsible for not announcing any changes or issuing next revisions or versions of this document.

Hi, I am here to help you!  
If you have any additional  
questions, please contact  
our support via email:  
[contact@riverdi.com](mailto:contact@riverdi.com)



## X-ON Electronics

Largest Supplier of Electrical and Electronic Components

*Click to view similar products for [LED Backlighting](#) category:*

*Click to view products by [Riverdi](#) manufacturer:*

Other Similar products are found below :

[SSB-COB7540GW](#) [SSB-DL6528SRW](#) [SSB-CEL8040UWW](#) [8718696543603](#) [8718696711033](#) [TST0004R3H4111XXXX10](#) [GEN4-4DPI](#)  
[SERIAL ADAPTOR](#) [0025 INT NATURAL BLUE](#) [0100 INT CLASSIC GLACIER WHITE](#) [0100 INT EXTREME ORANGE](#) [0100 INT](#)  
[NATURAL BLUE](#) [0200 INT EXTREME BLUE GREEN](#) [30531](#) [30565](#) [30586](#) [30588](#) [30589](#) [30590](#) [4052899326453](#) [JDR20W38 E14](#)  
[JDR50W38 GU10](#) [44870WFL](#) [MR16 60ST 20W](#) [64695 ECO](#) [64698 ECO](#) [64701 ECO](#) [64702 ECO](#) [64760](#) [SL2CD](#) [SKU 165](#) [SKU 167](#)  
[SKU 193](#) [SKU 194](#) [SKU 203](#) [4052899973428](#) [8718696497586](#) [8718696537015](#) [8718696728291](#) [8718696728352](#) [8718291787051](#)  
[8727900964073](#) [8727900964271](#) [8727900964295](#) [8727900964479](#) [8727900964516](#) [8727900964875](#) [DSD 1000](#) [DSD 2000](#) [EA LED40X33-](#)  
[ERW](#) [EB8004](#)