



Quality Products. Service Excellence.

ABS Plastic Project Enclosures *RL Series*

Shallow Lid

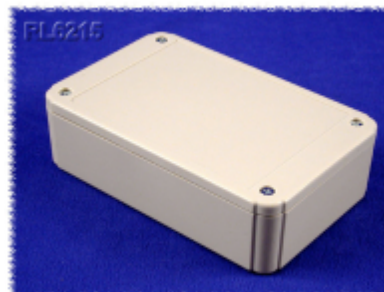


Key Features

- Designed to house P.C. boards for hand-held use or wall mount.
- Molded in light grey or black general purpose ABS plastic with a light texture.
- Two part construction. Both halves include smooth recessed area for membrane, label or silkscreen (see chart below for recess size).
- P.C. board standoffs are molded into both halves of the enclosure (see photo tables for details).
- Designed to meet IP54.
- All sizes also available in a flanged lid version.
- Includes four M2.6 assembly screws.



Photos



Available in black or gray, and with or without mounting flanges. Includes lid and PC board screws.

No Flanges	With Flanges	Color	Length	Width	Depth (with lid)	Lid Recess Size	Bottom Recess Size	PCB Mounting Dim	Wall Mount Dim (flanged lid only)
RL6105BK	RL6105-FBK	Black	3.15	2.36	1.18	2.13 x 2.05	2.13 x 2.05	2.52 x 1.18	3.62
RL6105	RL6105-F	Grey	3.15	2.36	1.18	2.13 x 2.05	2.13 x 2.05	2.52 x 1.18	3.62
RL6115BK	RL6115-FBK	Black	3.15	2.36	1.57	2.13 x 2.05	2.13 x 2.05	2.52 x 1.18	3.62
RL6115	RL6115-F	Grey	3.15	2.36	1.57	2.13 x 2.05	2.13 x 2.05	2.52 x 1.18	3.62
RL6165BK	RL6165-FBK	Black	4.13	2.56	1.18	3.11 x 2.24	3.11 x 2.24	3.5 x 1.38	5.08
RL6165	RL6165-F	Grey	4.13	2.56	1.18	3.11 x 2.24	3.11 x 2.24	3.5 x 1.38	5.08
RL6175BK	RL6175-FBK	Black	4.13	2.56	1.57	3.11 x 2.24	3.11 x 2.24	3.5 x 1.38	5.08
RL6175	RL6175-F	Grey	4.13	2.56	1.57	3.11 x 2.24	3.11 x 2.24	3.5 x 1.38	5.08
RL6215BK	RL6215-FBK	Black	4.92	3.15	1.38	3.78 x 2.76	3.78 x 2.76	4.21 x 1.57	5.39
RL6215	RL6215-F	Grey	4.92	3.15	1.38	3.78 x 2.76	3.78 x 2.76	4.21 x 1.57	5.39
RL6225BK	RL6225-FBK	Black	4.92	3.15	1.97	3.78 x 2.76	3.78 x 2.76	4.21 x 1.57	5.39
RL6225	RL6225-F	Grey	4.92	3.15	1.97	3.78 x 2.76	3.78 x 2.76	4.21 x 1.57	5.39
RL6335BK	RL6335-FBK	Black	4.92	3.94	2.36	3.78 x 3.46	3.78 x 3.46	4.17 x 2.56	5.39
RL6335	RL6335-F	Grey	4.92	3.94	2.36	3.78 x 3.46	3.78 x 3.46	4.17 x 2.56	5.39

No Flanges	With Flanges	Color	Length	Width	Depth (with lid)	Lid Recess Size	Bottom Recess Size	PCB Mounting Dim	Wall Mount Dim (flanged lid only)
RL6365BK	RL6365-FBK	Black	4.92	3.94	3.54	3.78 x 3.46	3.78 x 3.46	4.17 x 2.56	5.39
RL6365	RL6365-F	Grey	4.92	3.94	3.54	3.78 x 3.46	3.78 x 3.46	4.17 x 2.56	5.39
RL6435BK	RL6435-FBK	Black	5.91	3.94	2.36	4.72 x 3.54	4.72 x 3.54	5.20 x 2.36	6.38
RL6435	RL6435-F	Grey	5.91	3.94	2.36	4.72 x 3.54	4.72 x 3.54	5.20 x 2.36	6.38
RL6465BK	RL6465-FBK	Black	5.91	3.94	3.54	4.72 x 3.54	4.72 x 3.54	5.20 x 2.36	6.38
RL6465	RL6465-F	Grey	5.91	3.94	3.54	4.72 x 3.54	4.72 x 3.54	5.20 x 2.36	6.38
RL6555BK	RL6555-FBK	Black	6.89	4.92	2.76	5.59 x 4.53	5.59 x 4.53	6.06 x 2.76	7.36
RL6555	RL6555-F	Grey	6.89	4.92	2.76	5.59 x 4.53	5.59 x 4.53	6.06 x 2.76	7.36
RL6585BK	RL6585-FBK	Black	6.89	4.92	3.94	5.59 x 4.53	5.59 x 4.41	6.06 x 2.76	7.36
RL6585	RL6585-F	Grey	6.89	4.92	3.94	5.59 x 4.53	5.59 x 4.41	6.06 x 2.76	7.36
RL6655BK	RL6655-FBK	Black	7.87	5.91	2.76	6.50 x 5.31	6.50 x 5.31	7.01 x 3.94	6.50
RL6655	RL6655-F	Grey	7.87	5.91	2.76	6.50 x 5.31	6.50 x 5.31	7.01 x 3.94	6.50
RL6685BK	RL6685-FBK	Black	7.87	5.91	3.94	6.50 x 5.31	6.50 x 5.31	7.01 x 3.94	6.50
RL6685	RL6685-F	Grey	7.87	5.91	3.94	6.50 x 5.31	6.50 x 5.31	7.01 x 3.94	6.50

Data subject to change without notice

© 2018. Hammond Manufacturing Ltd. All rights reserved.

X-ON Electronics

Largest Supplier of Electrical and Electronic Components

Click to view similar products for [Enclosures, Boxes, & Cases](#) category:

Click to view products by [Hammond](#) manufacturer:

Other Similar products are found below :

[CR-425 PAINTED](#) [585-R-WH-PK](#) [M-10-PLATED](#) [60221-01](#) [60566-01-000](#) [HPL-9VB BATT DOOR](#) [M-16-LID-PLATED](#) [M18-PLTD](#) [M-21-LID-PLATED](#) [M-21-PLATED](#) [M-23-PLATED](#) [CU-281-MB](#) [6711GSKT](#) [71884-29-028](#) [LH45-100 Black](#) [7200B](#) [72868-510-000](#) [CNS-0000 Black](#) [72883-510-000](#) [CNS-0101 Black](#) [72906-510-000](#) [CNS-0407 Black](#) [73091-510-000](#) [CNM-0000-BLACK Kit](#) [73092-510-000](#) [CNM-0101 Black](#) [73108-510-000](#) [CNL-0303 Black](#) [73395-510-039](#) [CNS-0006 Bone](#) [74257-510-000](#) [CNL-0004](#) [MDC-1183-PLAIN-ALUM](#) [MDC-1183-PTD](#) [MDC-13104-PLAIN-ALUM](#) [MDC-211 - PAINTED IVORY/BEIGE](#) [MDC-321-PTD](#) [MDC-432-PLAIN-ALUM](#) [MDC-973-PTD](#) [76](#) [77153-01-028](#) [FLX6030](#) [83535-01-508](#) [PS-11296-G](#) [PS-11298-B](#) [116-508](#) [120-407](#) [120-412](#) [120-909](#) [120-455](#) [R272-100-000](#) [120-910](#) [R501-001-010](#) [R508-080-000](#) [R508-160-000](#) [R530-120-000](#) [R530-122-000](#) [R530-200-000](#) [R531-160-000](#) [R531-200-000](#) [R582-080-100](#)