



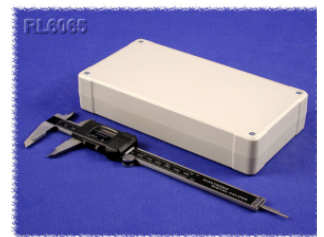
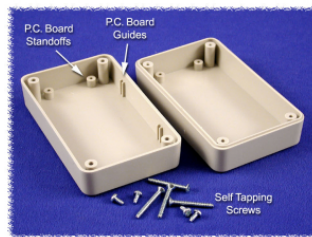
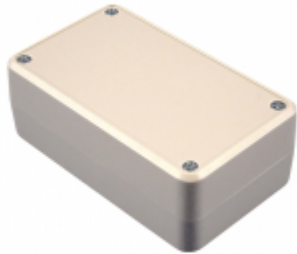
Quality Products. Service Excellence.

# ABS Plastic Project Enclosures *RL Series*

Deep Lid

## Key Features

- Designed to house P.C. boards for hand-held use.
- Molded in light grey or black general purpose ABS plastic with a light texture (material carries a UL flammability rating of UL94 HB).
- Two-part, snap action clam shell construction. Both halves include smooth recessed area for membrane, label or silkscreen.
- P.C. board standoffs are molded into both halves of the enclosure (see photo tables for details). Four short M3 screws included.
- P.C. board guides molded into top half.
- Designed to meet IP54.
- Includes four M3 assembly screws.



Click to enlarge features.

Bottom View

Top View

Part Number	Color	Length	Width	Depth (Assembled)
RL6015BK	Black	4.09	2.56	1.57
RL6015	Grey	4.09	2.56	1.57
RL6035BK	Black	5.67	2.56	1.57
RL6035	Grey	5.67	2.56	1.57
RL6055BK	Black	7.01	4.13	1.57
RL6055	Grey	7.01	4.13	1.57
RL6065BK	Black	8.07	4.13	1.57
RL6065	Grey	8.07	4.13	1.57

Data subject to change without notice

## X-ON Electronics

Largest Supplier of Electrical and Electronic Components

*Click to view similar products for [Enclosures, Boxes, & Cases](#) category:*

*Click to view products by [Hammond](#) manufacturer:*

Other Similar products are found below :

[CR-425 PAINTED](#) [585-R-WH-PK](#) [M-10-PLATED](#) [60221-01](#) [60566-01-000](#) [HPL-9VB BATT DOOR](#) [M-16-LID-PLATED](#) [M18-PLTD](#) [M-21-LID-PLATED](#) [M-21-PLATED](#) [M-23-PLATED](#) [CU-281-MB](#) [6711GSKT](#) [71884-29-028](#) [LH45-100 Black](#) [7200B](#) [72868-510-000](#) [CNS-0000 Black](#) [72883-510-000](#) [CNS-0101 Black](#) [72906-510-000](#) [CNS-0407 Black](#) [73091-510-000](#) [CNM-0000-BLACK Kit](#) [73092-510-000](#) [CNM-0101 Black](#) [73108-510-000](#) [CNL-0303 Black](#) [73395-510-039](#) [CNS-0006 Bone](#) [74257-510-000](#) [CNL-0004](#) [MDC-1183-PLAIN-ALUM](#) [MDC-1183-PTD](#) [MDC-13104-PLAIN-ALUM](#) [MDC-211 - PAINTED IVORY/BEIGE](#) [MDC-321-PTD](#) [MDC-432-PLAIN-ALUM](#) [MDC-973-PTD](#) [76](#) [77153-01-028](#) [FLX6030](#) [83535-01-508](#) [PS-11296-G](#) [PS-11298-B](#) [116-508](#) [120-407](#) [120-412](#) [120-909](#) [120-455](#) [R272-100-000](#) [120-910](#) [R501-001-010](#) [R508-080-000](#) [R508-160-000](#) [R530-120-000](#) [R530-122-000](#) [R530-200-000](#) [R531-160-000](#) [R531-200-000](#) [R582-080-100](#)