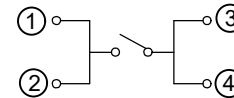
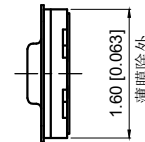
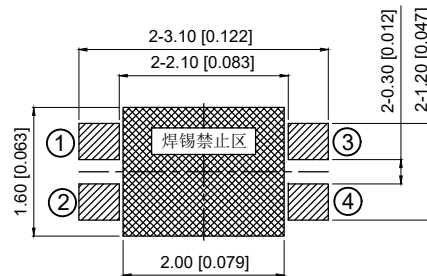
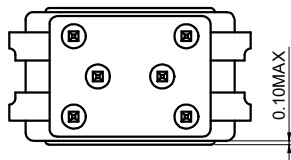
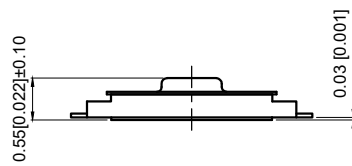


RECOMMENDED PCB LAYOUT
安装尺寸图



CIRCUIT DIAGRAM
回路图



LAND PATTERN PLAN
电路板焊盘参考图

Specifications

规格

Rating: DC12V 50mA

额定负荷: DC12V 50mA

Contact Resistance: 500mΩ max

接触电阻: 500mΩ max

Insulation resistance: DC100V 60S 100MΩ min

绝缘电阻: DC100V 60S 100MΩ min

Dielectric strength: AC250V(50~60HZ)60S min

抗电强度: AC250V(50~60HZ)60S min

Operation force: 160±50gf

操作力: 160±50gf

Operating Life: 500,000 cycles

寿命: 500,000 cycles

Travels: 0.12±0.05mm

行程: 0.12±0.05mm

Operating Temperature range: -40°C ~ +90°C

使用温度范围: -40°C ~ +90°C

Waterproof grade: IP67

防水等级: IP67

5	Knob 按钮	POLYAMIDE 尼龙	1	BLACK 黑色
4	FILM 胶片	POLYAMIDE 尼龙	1	WHITE 白色
3	Shrapnel 弹片	STAINLESS STEEL 不锈钢	2	Ag-PLATED 镀银的
2	Pedestal 基座	POLYAMIDE 尼龙	1	BLACK 黑色
1	TERMINAL 端子	PHOSPHOR BRONZE 磷青铜	1	Ag-PLATED 镀银的
NO 序号	Part name 部件名	Material 材料	QTY 数量	Remark 备注

A4				
A3				
A2				
A1				
REV	DATE	REVISION	DESCRIPTION	ISSUE



COMMON TOLERANCE

X.XX	± 0.10
X.X	± 0.15
X	± 0.25

ANGULAR

UNIT

MM

PROJECTED



PRODUCT NAME:

DRAWN BY

FUYUAN

CHECKED BY

COCO

MODEL NO: TP40321116

DATE

2019

APPROVAL B

ALEN

Https: www.rocpcu.tw

ROCPCU TECHNOLOGY CO., LTD

Copies are issued in strict confidence and shall not be reproduced or copied, or used as the basic of manufacture or sale of apparatus without permission

X-ON Electronics

Largest Supplier of Electrical and Electronic Components

Click to view similar products for [Tactile Switches](#) category:

Click to view products by [ROCPU Technology](#) manufacturer:

Other Similar products are found below :

[5GTH92001](#) [5GTH9202242](#) [6407-250V-25273P](#) [ADTSA62NV](#) [ADTSA62RV](#) [B3F-3123](#) [1977177-8](#) [1977266-1](#) [ADTSA63NV](#)
[ADTSM21NSVTR](#) [ADTSM25RVTR](#) [ADTSM32NVTR](#) [ADTSMW64RV](#) [FSMRA4JHA04](#) [GS4.70F300QP](#) [KSC241J SP DELTA LFS](#)
[3FTL600RAS](#) [3FTL640RAS](#) [Y96K132V0FPLFS](#) [5GTH9658222](#) [6407-250V-25343P](#) [ADTSM31NVTR](#) [EVQ-P1D05K](#) [2-1977120-7](#) [TSJW-](#)
[5.2-260-TR](#) [KMT011MNGJLHS](#) [B3WN6002S](#) [70-201.0](#) [ADTSG648NV](#) [ADTSM62KSVTR](#) [ADTSM648NV](#) [95C06E3RAT](#) [5GTH96561](#)
[3ATH9Q](#) [FSMRA8JHA04](#) [HARS0073](#) [Y97HS12A5RAFP](#) [Y97BT23B2HAFP](#) [Y33R411N9FPLFT](#) [Y31C01402FPLFS](#)
[PTS645SK50SMTR92](#) [ADTSM32NVB](#) [KMS233GPWTLFG](#) [Y78B64124FP](#) [PTS638SK25SMTR2LFS](#) [Y96D113G0FP LFS](#) [Y33A812C5FP](#)
[LFT](#) [Y56B2D120FP LFS](#) [PTS645 DVM83-BN125-2 LFS](#) [B3W 1000G](#)