

A

B

C

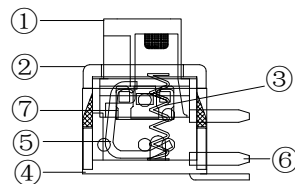
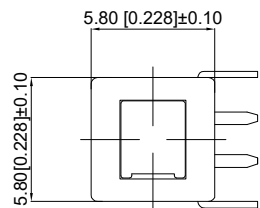
D

E

F

G

1

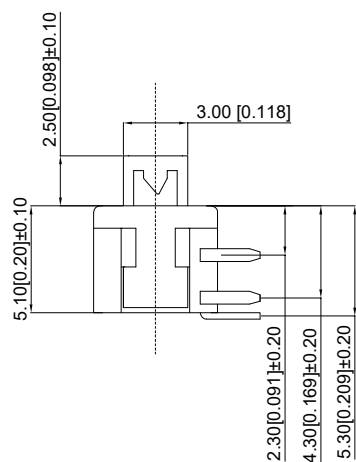


SPECIFICATIONS

1.ELECTRICAL

Contact rating	0.1A,30VDC
Contact resistance	50mWMax.
Insulation resistance	100MWMIn. at 250VDC
Dielectric strength	250VAC Min. for 60 sec.

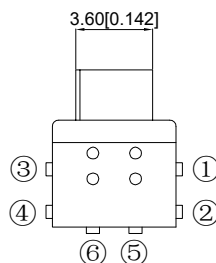
2



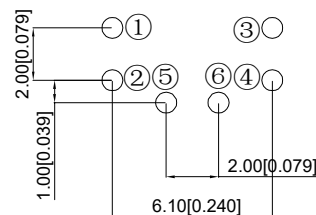
2.MECHANICAL AND ENVIRONMENTAL

Temperature rating	Operating: -15 to +55 Storage: -25 °C to +65 °C
Operation force	250±50gf
Stroke	Lock Stroke: 1.5+0.2mm Full Stroke: 2.0+0.2mm
Operating life	full load: 1x10 ⁴ cycles no load: 1 x10 ⁵ cycles
Contact form	DPDT

CIRCUIT DIAGRAM

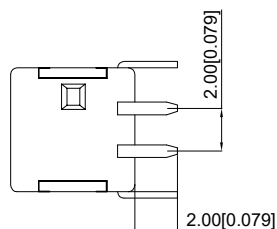


3



PCB LAYOT

4



7	Contact	Phosphor bronze	2	Plating silvering
6	Terminal	Brass	6	Plating silvering
5	Spring	SUS	1	Natural color
4	Base	PPA	1	
3	Crocher Needle	SUS	1	Natural color
2	Cover	PPA	1	
1	Keystake	PPA	1	
ITEM	Name	Materials	NUM	COLOR

5

REV	DATE	REVISION DESCRIPTION	ISSUE
A4			
A3			
A2			
A1			



COMMON TOLERANCE

X.XX	± 0.10
X.X	± 0.15
X	± 0.25
ANGULAR	—

UNIT

MM

PROJECTED



PRODUCT NAME:

DRAWN BY

FUYUAN

CHECKED BY

COCO

MODEL NO: TP55813175

DATE

2019

APPROVAL B

ALEN

Https: www.rocpcu.tw

ROCPCU TECHNOLOGY CO.,LTD

Copies are issued in strict confidence and shall not be reproduced or copied, or used as the basis of manufacture or sale of apparatus without permission

X-ON Electronics

Largest Supplier of Electrical and Electronic Components

Click to view similar products for [Pushbutton Switches](#) category:

Click to view products by [ROCPU Technology](#) manufacturer:

Other Similar products are found below :

[8971K1133](#) [LW2L-M1C20M-A](#) [M22-D-R-GB0/K11](#) [67021K512](#) [701PB580](#) [7199K101](#) [810K12910](#) [810KSV30B](#) [FLT 2U EE 01A](#)
[MML21EA2ADK](#) [MML21KA3ABK](#) [MML23KA3AC05K-001](#) [MML23KW3AA01W](#) [8418K2](#) [8442K3](#) [8450K1](#) [860K11911T01A](#) [861901](#)
[861K11911T01A07](#) [861K13810T00A14](#) [861K13911](#) [8646AB6X718UL](#) [9533CD4+U574+U4922](#) [99-450.837](#) [99-453.837](#)
[A2PMA1X03EC56](#) [A3A-7310](#) [A3A-7340](#) [12037A2ULCSA](#) [1203A2UL](#) [ABGW410-R](#) [1211390004](#) [ABN400-R](#) [121382](#) [1213C3](#) [HE3B-M2](#)
[1211500044](#) [121194](#) [1212MRA](#) [1232A6NF](#) [1241.1183.7047](#) [121489](#) [1223A2ULCSA](#) [1241.1183.8000](#) [1241.1183.8029](#) [D5P-MT4](#)
[13435AG](#) [13445AD29GX768](#) [AG23-L2](#) [AH165-2SGLG1TE3](#)