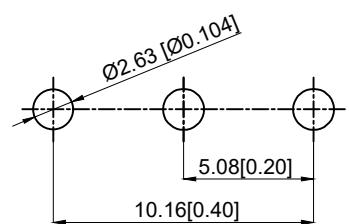


**Product specifications**

产品规格

1. Rated current: 1A, 250V AC or 28 VDC
1. 额定电流: 1A, 250V AC or 28 VDC
2. Contact Resistance: 20 mΩ max
2. 接触电阻: 最大 20 mΩ
3. Insulation Resistance: 1000 MΩ min
3. 绝缘电阻: 最小 1000 MΩ
4. Dielectric Strength: 1000 VAC/1 min
4. 介电强度: 1000 VAC/1 分钟
5. Operating Temperature: -30°C to ±85°C
5. 工作温度: -30°C 至 ±85°C
6. Electrical Life: 10000 cycles
6. 电气寿命: 10000 次循环
7. Operating force: 10N max
7. 操作力: 10N max



PCB LAYOUT BOTTOM VIEW

Circuit view		SWITCHING POSITION	
MODEL NO	SPACING		
TP606	5.08	ON	ON
TermComm		2-3	2-1

6	Sealing gasket 密封垫片	POM	1	white 白色
5	Reed 簧片	Copper alloy 铜合金	1	Ag plating 镀银
4	Terminal 端子	Copper alloy 铜合金	3	Ag plating 镀银
3	Handle 手柄	PA66	1	black 黑色
2	Upper lid 上盖	PA66	1	black 黑色
1	Base 基座	PBT	1	white 白色
NO 序号	Part name 部件名	Material 材料	QTY 数量	Remark 备注

A4				
A3				
A2				
A1				
REV	DATE	REVISION	DESCRIPTION	ISSUE
	A		B	



COMMON TOLERANCE	
X.XX	± 0.10
X.X	± 0.15
X	± 0.25
ANGULAR	—

UNIT	MM	PROJECTED		PRODUCT NAME:
DRAWN BY	FUYUAN	CHECKED BY	COCO	MODEL NO: TP606110228
DATE	2019	APPROVAL B	ALEN	Https: www.rocpcu.tw
<b>ROCPCU TECHNOLOGY CO.,LTD</b>				
Copies are issued in strict confidence and shall not be reproduced or copied, or used as the basic of manufacture or sale of apparatus without permission				
D	E	F	G	

## X-ON Electronics

Largest Supplier of Electrical and Electronic Components

*Click to view similar products for [Slide Switches](#) category:*

*Click to view products by [ROCPU Technology](#) manufacturer:*

Other Similar products are found below :

[6-1437581-1](#) [M43R](#) [MHS123K15D](#) [MHS133K](#) [MMD](#) [MSS12A](#) [1825074-1](#) [1825160-3](#) [1825167-2](#) [1825289-7](#) [25139NLDB](#) [25449NAH](#)  
[SLB1240R45](#) [1825078-1](#) [1825080-4](#) [1825269-1](#) [1825270-2](#) [STS141RA04](#) [T2215BEN506](#) [GH46P000001](#) [GH49P010001](#) [M42A](#)  
[AYZ0202AG](#) [L203091MS02Q](#) [4-1437581-7](#) [48BFSP3M2QT](#) [1101M1S3ZB8E2](#) [1-1437581-1](#) [EG1218REDACTUATOR](#) [MSS2225G04](#)  
[MSS42G](#) [T105S1CWZBE](#) [SLB124145](#) [SLB1280R5](#) [TG39W000050](#) [25149NAH](#) [25439NAH](#) [25436NAH6](#) [TG36Y000050](#) [NK236X693](#)  
[46204LRX](#) [1977143-4](#) [1977144-4](#) [HASS0194](#) [JS0001](#) [SSJ12R04](#) [GR5-1323-0800](#) [GH36Y410001](#) [S202041MS04Q](#) [25446NAB](#)