

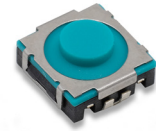
# TPLS Series Soft Sound Tact Switch

## Features/Benefits

- New soft sound
- Soft actuator
- IP54
- Long life
- J terminations
- Tape & reel

## Typical Applications

- Automotive interior controls
- Automatic gear shift paddle
- Steering wheel
- Window lifter
- Seat adjustment module



ROCPU

Tactile Switches

B

Tactile Switches

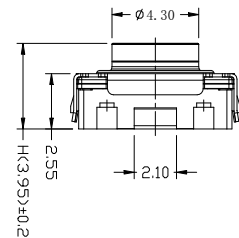
Type	Force (N)	Tactile Feeling (%)	Travel (mm)	Life (cycles)
TPLS 004 J LFS	4 ± 0.8	50 ± 15	0.9 ± 0.3	500,000
TPLS 007 J LFS	7 ± 1.5			500,000
TPLS 010 J LFS	10 ± 2			300,000

POWER: 10μ VA min. / 0.8 VA max.

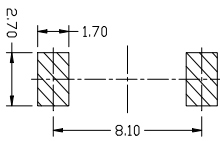
VOLTAGE: DC 1V min. / 16 V max.

CURRENT: 10μA min. / 50 mA max.

OPERATING TEMPERATURE: -40°C / +90°C

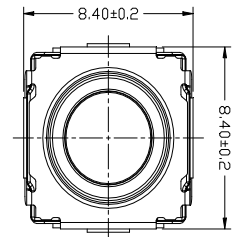
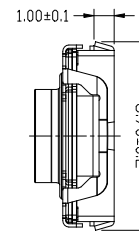
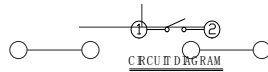


### PCB LAYOUT



P.C.B L A N D D I M E N S I O N

### CIRCUIT DIAGRAM



## Packaging

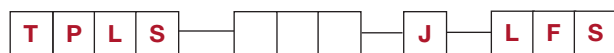
Switches in reels of 900 pieces.

Dimensions of reels according to EIA 481B. External diameter 330 mm.

## How To Order

Our easy build-a-switch concept allows you to mix and match options to create the switch you need. To order, select desired option from each category and place it in the appropriate box.

For any part number different from those listed above, please consult your local representative.



Operating Force

004 4 N  
007 7 N  
010 10 N

Termination  
J J bending

LFS Lead free compatible, silver plated



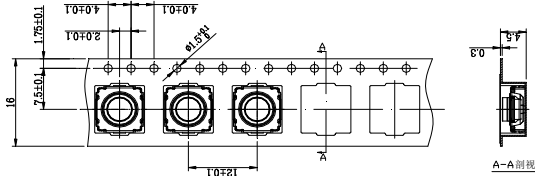
Third Angle  
Projection

Dimensions are shown: mm  
Specifications and dimensions subject to change



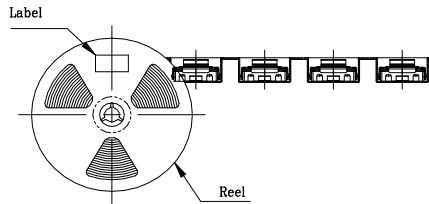
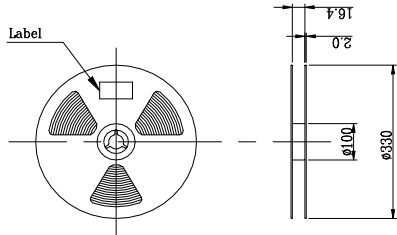
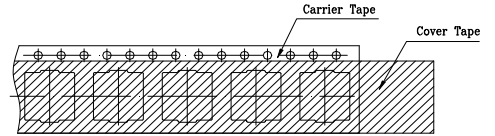
# TPLS Series Soft Sound Tact Switch

\* THE DIMENSION OF CARRIER TAPE, COVER TAPE AND REEL \*

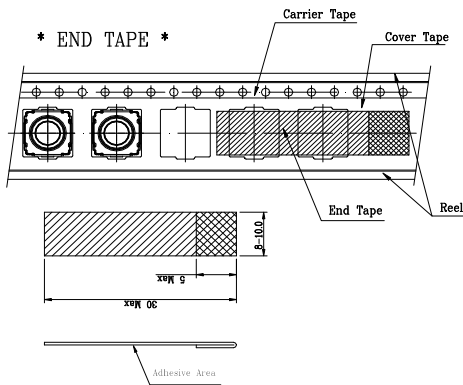


MODEL NAME	CODE NO.
TVFPU13	

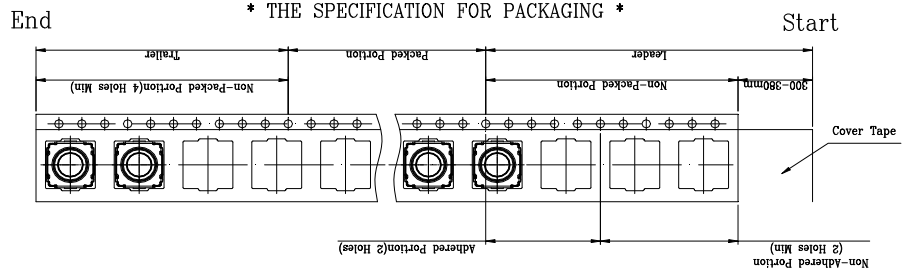
\* THE SPECIFICATION FOR PACKAGING \*



\* END TAPE \*



\* THE SPECIFICATION FOR PACKAGING \*



NOTE

- 1K pcs SWITCHES PER 1 REEL
- GENERAL TOLERANCE : 0.2mm

REFERENCE DRAW NG

## X-ON Electronics

Largest Supplier of Electrical and Electronic Components

*Click to view similar products for [Tactile Switches](#) category:*

*Click to view products by [ROCPU Technology](#) manufacturer:*

Other Similar products are found below :

[5GTH92001](#) [5GTH9202242](#) [6407-250V-25273P](#) [ADTSA62NV](#) [ADTSA62RV](#) [B3F-3123](#) [1977177-8](#) [1977266-1](#) [ADTSA63NV](#)  
[ADTSM21NSVTR](#) [ADTSM25RVTR](#) [ADTSM32NVTR](#) [ADTSMW64RV](#) [FSMRA4JHA04](#) [GS4.70F300QP](#) [KSC241J SP DELTA LFS](#)  
[3FTL600RAS](#) [3FTL640RAS](#) [Y96K132V0FPLFS](#) [5GTH9658222](#) [ADTSM31NVTR](#) [2-1977120-7](#) [TSJW-5.2-260-TR](#) [KMT011MNGJLHS](#)  
[B3WN6002S](#) [70-201.0](#) [ADTSG648NV](#) [ADTSM62KSVTR](#) [ADTSM648NV](#) [95C06E3RAT](#) [5GTH96561](#) [3ATH9Q](#) [FSMRA8JHA04](#)  
[HARS0073](#) [Y33R411N9FPLFT](#) [Y31C01402FPLFS](#) [PTS645SK50SMTR92](#) [ADTSM32NVB](#) [KMS233GPWTLFG](#) [Y78B64124FP](#)  
[Y96D113G0FP LFS](#) [Y33A812C5FP LFT](#) [Y56B2D120FP LFS](#) [PTS645 DVM83-BN125-2 LFS](#) [B3W 1000G](#) [KSC621G OL LFS](#) [B3F 1002C](#)  
[B3F 0047H](#) [B3F 1000G](#) [B3W 1002C](#)