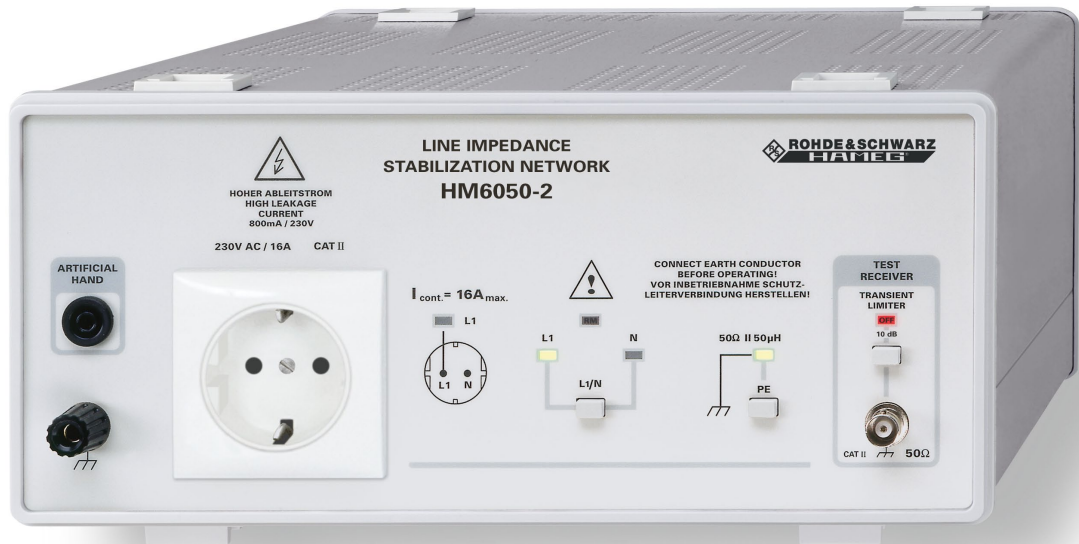


Line Impedance Stabilization Network HM6050-2



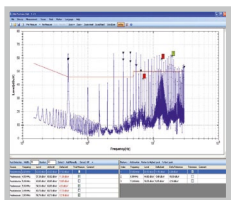
HM6050-2

- Measurement of Line-conducted Interferences within the Range from 9kHz...30MHz (CISPR 16)
- Selectable Transient Limiter
- Artificial Hand Connector

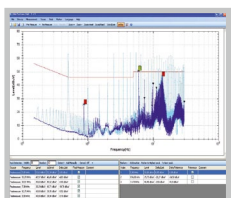
HM6050-2K
(UK Version, 230V)
HM6050-2S
(US Version, 115V)



Measurement of Line-conducted Interference: Fail



Measurement of Line-conducted Interference: Pass



Technical Specifications at 23°C ±2°C

| | |
|----------------------------|--|
| Frequency Range: | 9kHz...30MHz |
| Impedance Characteristics: | Z = 50Ω (50μH + 5Ω), Error <20% under terms of VDE 876T1 |
| Max. Current: | 16A |
| Line Voltage/Frequency: | 230V/50...60Hz, CAT II |
| Artificial Hand: | 220pF + 511Ω |
| PE (selectable): | 50μH 50Ω |

Transient Limiter

| | |
|--------------------|--------------------|
| Frequency Range: | 150kHz...30MHz |
| Transmission Loss: | 10dB (+1.5/-0.5dB) |

Connectors

| | |
|------------------------------|---------------------------------------|
| Measurement Output: | 50Ω BNC |
| Power Supply Socket for DUT: | Standard German (UK, US) wall outlets |
| Artificial Hand: | 4mm banana socket |
| Line Cord: | fixed |

Miscellaneous

| | |
|------------------------|---|
| Operating Temperature: | 10...40°C |
| Power Supply: | HM6050-2D (DE Version) 230V ±10%, 50...60Hz HM6050-2K (UK Version) 230V ±10%, 50...60Hz HM6050-2S (US Version) 115V ±10%, 50...60Hz |
| Safety Class: | Safety class I (IEC1010-1/VDE 0411) |
| Dimensions and Weight: | 285 x 125 x 380mm (W x H x D), approx. 6kg |

X-ON Electronics

Largest Supplier of Electrical and Electronic Components

Click to view similar products for [rohde & schwarz](#) manufacturer:

Other Similar products are found below :

[HMF2525](#) [HMP2020](#) [HMP2030](#) [HZ22](#) [HZ24](#) [HV512](#) [HMC8041](#) [RTC1K-102](#) [RTC1K-202](#) [HA-Z211](#) [RTB2002 \(RTB2K-72\)](#) [RTB2002 + RTB-B221 \(RTB2K-102\)](#) [RTM-B222](#) [RTM-B223](#) [RTM-B225](#) [RTM-B2210](#) [RTM-B243](#) [RTM-B2410](#) [R&S FPL1003-P4](#) [R&S® FPH-B8](#) [NGL-K103](#) [FPC-COM1](#) [RTB2K-202](#) [HMC8042](#) [HZ42](#) [RTB2K-104](#) [HA-Z302](#) [RTB-PK1](#) [RTM-K1](#) [RTM-B242](#) [R&S HMP4030](#) [NGE103B](#) [R&S NRX](#) [R&S RTM-K36](#) [RTB2K-COM4](#) [HMC8012](#) [HM8118.02](#) [RTM-K3](#) [RTM-K15](#) [RTM-K18](#) [R&S HM7042-5](#) [RTB2004 \(RTB2K-74\)](#) [RTM3K-COM4](#) [RTM-K2](#) [RTM-K5](#) [RTM-K6](#) [RTM-K7](#) [RTM-K31](#) [NGL-B105](#) [NGE-COM3A](#)