

Power Transistor (120V, 1.5A)

2SC4132 / 2SD1857

●Features

- 1) High breakdown voltage. ($BV_{CEO} = 120V$)
- 2) Low collector output capacitance.
(Typ. 20pF at $V_{CB} = 10V$)
- 3) High transition frequency. ($f_T = 80MHz$)
- 4) Complements the 2SB1236.

●Absolute maximum ratings ($T_a = 25^\circ C$)

Parameter	Symbol	Limits	Unit
Collector-base voltage	V_{CBO}	120	V
Collector-emitter voltage	V_{CEO}	120	V
Emitter-base voltage	V_{EBO}	5	V
Collector current	I_C	2	A
	I_{CP}	3	A
Collector power dissipation	P_C	0.5	W
		2	
		1	
Junction temperature	T_J	150	$^\circ C$
Storage temperature	T_{stg}	-55 to +150	$^\circ C$

*1 Single pulse $P_w = 10ms$ *2 When mounted on a $40 \times 40 \times 0.7mm$ ceramic board.

●Packaging specifications and h_{FE}

Type	2SC4132	2SD1857
Package	MPT3	ATV
h_{FE}	PQR	PQR
Marking	CB*	-
Code	T100	TV2
Basic ordering unit (pieces)	1000	2500

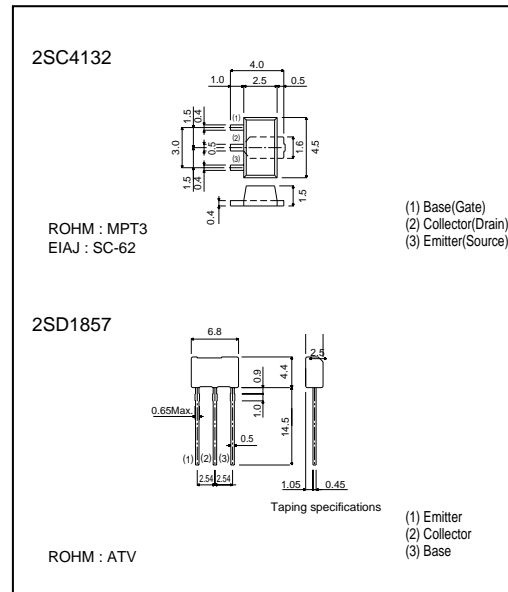
* Denotes h_{FE}

●Electrical characteristics ($T_a = 25^\circ C$)

Parameter	Symbol	Min.	Typ.	Max.	Unit	Conditions
Collector-base breakdown voltage	BV_{CBO}	120	-	-	V	$I_C = 50\mu A$
Collector-emitter breakdown voltage	BV_{CEO}	120	-	-	V	$I_C = 1mA$
Emitter-base breakdown voltage	BV_{EBO}	5	-	-	V	$I_E = 50\mu A$
Collector cutoff current	I_{CBO}	-	-	1	μA	$V_{CB} = 100V$
Emitter cutoff current	I_{EBO}	-	-	1	μA	$V_{EB} = 4V$
Collector-emitter saturation voltage	$V_{CE(sat)}$	-	-	2	V	$I_C/I_B = 1A/0.1A$
DC current transfer ratio	h_{FE}	82	-	390	-	$V_{CE}/I_C = 5V/0.1A$
Transition frequency	f_T	-	80	-	MHz	$V_{CE} = 5V, I_E = -0.1A, f = 30MHz$
Output capacitance	C_{ob}	-	20	-	pF	$V_{CB} = 10V, I_E = 0A, f = 1MHz$

* Measured using pulse current.

●External dimensions (Unit : mm)



X-ON Electronics

Largest Supplier of Electrical and Electronic Components

Click to view similar products for [Bipolar Transistors - BJT category](#):

Click to view products by [ROHM manufacturer](#):

Other Similar products are found below :

[619691C](#) [MCH4017-TL-H](#) [BC546/116](#) [BC557/116](#) [BSW67A](#) [NTE158](#) [NTE187A](#) [NTE195A](#) [NTE2302](#) [NTE2330](#) [NTE63](#) [C4460](#)
[2SA1419T-TD-H](#) [2SA1721-O\(TE85L,F\)](#) [2SA2126-E](#) [2SB1204S-TL-E](#) [2SC5488A-TL-H](#) [2SD2150T100R](#) [SP000011176](#) [FMMTA92QTA](#)
[2N2369ADCSM](#) [2SC2412KT146S](#) [2SC5490A-TL-H](#) [2SD1816S-TL-E](#) [2SD1816T-TL-E](#) [CMXT2207 TR](#) [CPH6501-TL-E](#) [MCH4021-TL-E](#)
[US6T6TR](#) [732314D](#) [CMXT3906 TR](#) [CPH3121-TL-E](#) [CPH6021-TL-H](#) [873787E](#) [IMZ2AT108](#) [UMX21NTR](#) [EMT2T2R](#) [MCH6102-TL-E](#)
[FP204-TL-E](#) [NJL0302DG](#) [2N3583](#) [2SA1434-TB-E](#) [2SC3143-4-TB-E](#) [2SD1621S-TD-E](#) [NTE103](#) [30A02MH-TL-E](#) [NSV40301MZ4T1G](#)
[NTE101](#) [NTE13](#) [NTE15](#)