

5V/150mA Output

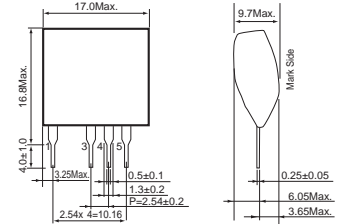
Step-down DC/DC Converter (Non-isolated)

BP5225

Absolute Maximum Ratings

Parameter	Symbol	Limits	Unit
Input voltage	V_i	30	V
Operating temperature range	T_{opr}	-20 to +80	°C
Storage temperature range	T_{stg}	-25 to +85	°C
Maximum surface temperature	T_{smax}	100	°C
Maximum output current	I_{opeak}	150	mA

Dimensions (Unit : mm)

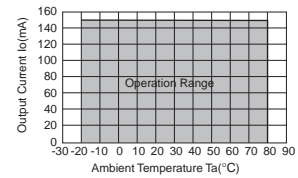


Electrical Characteristics

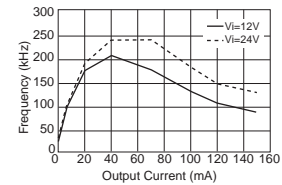
Parameter	Symbol	Min.	Typ.	Max.	Unit	Conditions
Input voltage range	V_i	10.0	12.0	26.4	V	DC
Output voltage	V_o	4.8	5.0	5.2	V	$V_i=12V, I_o=150mA$
Output current	I_o	-	-	150	mA	$V_i=12V$ *1
Line regulation	V_L	-	0.04	0.10	V	$V_i=10.0$ to $26.4V, I_o=150mA$
Load regulation	V_R	-	0.03	0.20	V	$V_i=12V, I_o=0$ to $150mA$
Output ripple voltage	V_p	-	0.03	0.10	V _{pp}	$V_i=12V, I_o=150mA$ *2
Power conversion efficiency	η	70	78	-	%	$V_i=12V, I_o=150mA$

*1 Maximum output current must be reduced by ambient temperature.
*2 An output ripple voltage sometimes changes in capacitor to use, the measurement environment.

Derating Curve

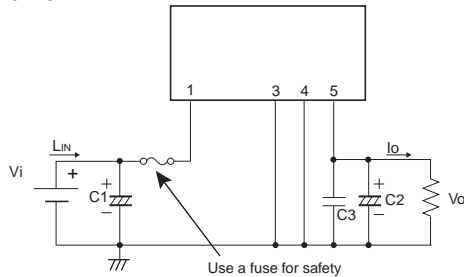


Oscillation Frequency



Application Circuit

BP5225



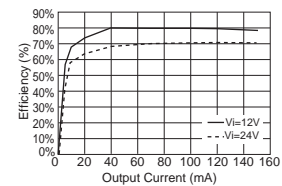
Pin No.	Function
1	Input terminal V_i
2	Not used
3	GND
4	GND
5	Output terminal V_o

Verify proper operation under actual conditions before use. In particular, confirm that the load current does not exceed the maximum rating.

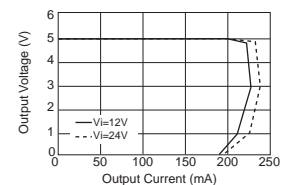
External Component Specifications

- FUSE:** FUSE Use a fast-acting fuse from 0.5 to 1A.
- C1:** Input Capacitor Rated Voltage : More than 50V
Capacity : 68 to 470 μ F, low impedance type
Rated ripple current : More than 0.42Arms
- C2:** Output Capacitor Rated Voltage : More than 10V
Capacity : 100 to 470 μ F, low impedance type
ESR : Less than 0.22 Ω
Rated ripple current : More than 0.34Arms
Evaluate under actual operating conditions since it affects the output ripple voltage.
- C3:** Noise Removal Capacitor Rated Voltage : More than 10V
Film or ceramic capacitor.
Capacity : 0.1 to 0.22 μ F.

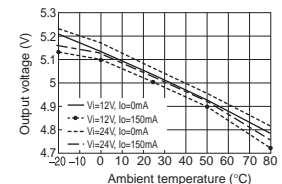
Conversion Efficiency



Load Regulation



Temperature Characteristics



X-ON Electronics

Largest Supplier of Electrical and Electronic Components

Click to view similar products for [Switching Voltage Regulators](#) category:

Click to view products by [ROHM](#) manufacturer:

Other Similar products are found below :

[FAN53610AUC33X](#) [FAN53611AUC123X](#) [FAN48610BUC33X](#) [FAN48610BUC45X](#) [FAN48617UC50X](#) [R3](#) [430464BB](#) [KE177614](#)
[MAX809TTR](#) [NCV891234MW50R2G](#) [NCP81103MNTXG](#) [NCP81203PMNTXG](#) [NCP81208MNTXG](#) [NCP81109GMNTXG](#)
[SCY1751FCCT1G](#) [NCP81109JMNTXG](#) [AP3409ADNTR-G1](#) [NCP81241MNTXG](#) [LTM8064IY](#) [LT8315EFE#TRPBF](#) [LTM4668AIY#PBF](#)
[NCV1077CSTBT3G](#) [XCL207A123CR-G](#) [MPM54304GMN-0002](#) [MPM54304GMN-0003](#) [XDPE132G5CG000XUMA1](#) [MP8757GL-P](#)
[MIC23356YFT-TR](#) [LD8116CGL](#) [HG2269M/TR](#) [OB2269](#) [XD3526](#) [U6215A](#) [U6215B](#) [U6620S](#) [LTC3412IFE](#) [LT1425IS](#)
[MAX25203BATJA/VY+](#) [MAX77874CEWM+](#) [XC9236D08CER-G](#) [ISL95338IRTZ](#) [MP3416GJ-P](#) [BD9S201NUX-CE2](#) [MP5461GC-Z](#)
[MPQ4415AGQB-Z](#) [MPQ4590GS-Z](#) [MCP1603-330IMC](#) [MCP1642B-18IMC](#) [MCP1642D-ADJIMC](#) [MCP1642D-18IMC](#)