

1. TYPE LTC043ZM FS8
2. STRUCTURE NPN SILICON EPITAXIAL PLANAR DIGITAL TRANSISTOR
3. APPLICATIONS INVERTER, INTERFACE, DRIVER
4. ABSOLUTE MAXIMUM RATINGS [Ta=25°C]

SUPPLY VOLTAGE  $V_{CC}$  ... 50V

INPUT VOLTAGE  $V_{IN}$  ... 30V~-5V

COLLECTOR CURRENT  $I_{C(max)}$  ... 100mA

CHARACTERISTICS OF  
BUILT-IN TRANSISTOR

OUTPUT CURRENT  $I_O$  ... 100mA

POWER DISSIPATION  $P_D$  ... 150mW

EACH TERMINAL MOUNTED  
ON A REFERENCE LAND

JUNCTION TEMPERATURE  $T_j$  ... 150°C

RANGE OF STORAGE TEMPERATURE  $T_{stg}$  ... -55~150°C

DESIGN

CHECK

APPROVAL

DATE : 20/APR/2011

SPECIFICATION No. : T837-LTC043ZM FS8

*J. Moriyama*

*A. Tsubaki*

*J. Arizono*

REV. : 1

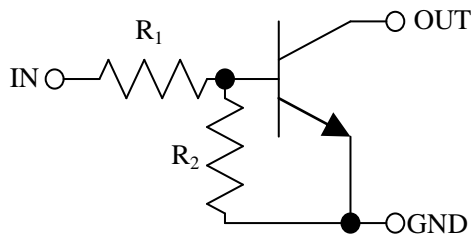
**ROHM Co.,Ltd.**

5. ELECTRICAL CHARACTERISTICS [Ta=25°C]

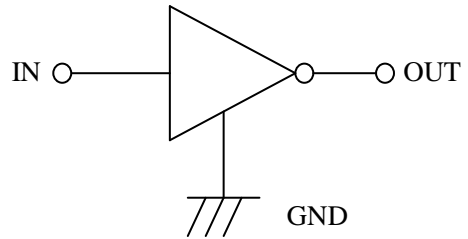
PARAMETER	SYMBOL	CONDITION	MIN.	TYP.	MAX.
INPUT VOLTAGE	$V_{I(off)}$	$V_{CC}=5V / I_O=100\mu A$	–	–	0.5V
	$V_{I(on)}$	$V_O=0.3V / I_O=5mA$	1.1V	–	–
OUTPUT VOLTAGE	$V_{O(on)}$	$I_O=5mA / I_I=0.5mA$	–	0.05V	0.15V
INPUT CURRENT	$I_I$	$V_I=5V$	–	–	1.8mA
OUTPUT CURRENT	$I_{O(off)}$	$V_{CC}=50V / V_I=0V$	–	–	500nA
DC CURRENT GAIN	$G_I$	$V_O=10V / I_O=5mA$	80	–	–
TRANSITION FREQUENCY *	$f_T$	$V_{CE}=10V / I_E=-5mA$ $f=100MHz$	–	250MHz	–
INPUT RESISTANCE	$R_I$		3.29kΩ	4.7kΩ	6.11kΩ
RESISTANCE RATIO	$R_2/R_1$		8	10	12

\*CHARACTERISTICS OF BUILT-IN TRANSISTOR

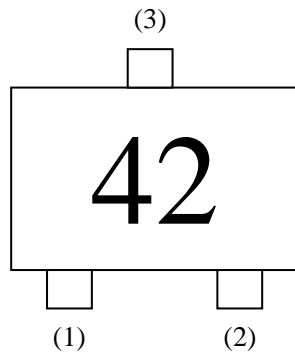
6. INTERNAL CIRCUIT



$R_1=4.7k\Omega$   
 $R_2=47k\Omega$



7. MARKING



“ 42 ” MEAN LTC043ZM FS8

(1) IN  
(2) GND  
(3) OUT

## X-ON Electronics

Largest Supplier of Electrical and Electronic Components

*Click to view similar products for [Bipolar Transistors - BJT category](#):*

*Click to view products by [ROHM manufacturer](#):*

Other Similar products are found below :

[619691C](#) [MCH4017-TL-H](#) [MMBT-2369-TR](#) [BC546/116](#) [BC557/116](#) [BSW67A](#) [NJVMJD148T4G](#) [NTE123AP-10](#) [NTE153MCP](#) [NTE16](#)  
[NTE195A](#) [NTE92](#) [C4460](#) [2N4401-A](#) [2N6728](#) [2SA1419T-TD-H](#) [2SA2126-E](#) [2SB1204S-TL-E](#) [2SC2712S-GR,LF](#) [2SC5488A-TL-H](#)  
[2SD2150T100R](#) [SP000011176](#) [2N2907A](#) [2N3904-NS](#) [2N5769](#) [2SC2412KT146S](#) [2SD1816S-TL-E](#) [CPH6501-TL-E](#) [MCH4021-TL-E](#)  
[MJE340](#) [US6T6TR](#) [NJL0281DG](#) [732314D](#) [CPH3121-TL-E](#) [CPH6021-TL-H](#) [873787E](#) [IMZ2AT108](#) [UMX21NTR](#) [MCH6102-TL-E](#)  
[NJL0302DG](#) [2N3583](#) [30A02MH-TL-E](#) [NSV40301MZ4T1G](#) [NTE13](#) [NTE26](#) [NTE282](#) [NTE323](#) [NTE350](#) [NTE81](#) [STX83003-AP](#)