

Alustyle | End cover



ASD 1030-7024

Order no.: 94422100

For ASP... 1030

* = Available on request.

Characteristics

Colour of enclosure group

Graphite grey, similar to RAL 7024

Enclosure Material

Extruded profiles: Al Mg Si 0.5 powder-coated;

Diecast lid: zinc alloy Z410 / aluminium GD Al Si 12 (ASD 1540), powder-coated;

Seal: TPE;

for details see Technical Information

Scope of delivery

Lid including dark grey seal, screws, graphite grey screw covers

Note

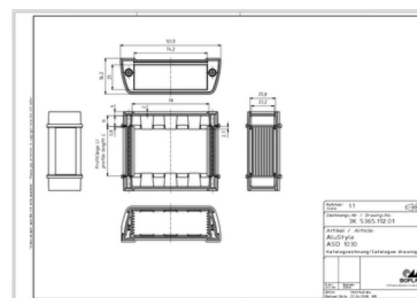
max. achievable ingress protection IP 66 / IP 68 – 1.2m (2 hrs.) (dependent on profile version)

Important!

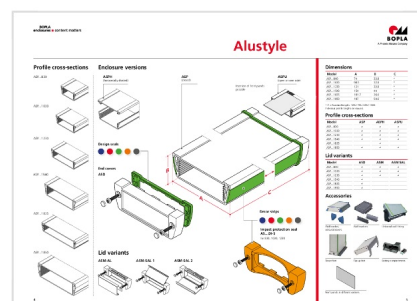
To compensate for pressure when temperatures change and cause moisture in the enclosure, we recommend that you use a [pressure compensation](#) element.

10.08.2023

Product drawing



Enclosure concept



In order to ensure that you can determine **the correct quantity of elements for your application**, we are providing you here with a DAE calculator.

[» Additional information](#)

Technical documentation / Downloads

Technical drawings

3D product data in STEP format:

Login to download

Drawing for mechanical processing:

94422100 ASD-1030-7024-G.dxf
(778.4 KB)

Milling contours are shown here as a DXF file. (Sub D, USB, HDMI, cable glands, ...)

Product drawing in PDF format:

94422100 ASD-1030-7024.pdf
(147.9 KB)

Product drawing in DXF format:

94422100 ASD-1030-7024.dxf
(1.0 MB)

Works test certificates

686 WPZ-Alustyle-ASP DE.pdf

(179.3 KB)

686 WPZ-Alustyle-ASP EN.pdf

(151.6 KB)

691 WPZ-Alustyle-ASPH DE.pdf

(191.3 KB)

691 WPZ-Alustyle-ASPH EN.pdf

(183.5 KB)

Product information

alustyle en.pdf

(1.5 MB)

X-ON Electronics

Largest Supplier of Electrical and Electronic Components

Click to view similar products for [Electrical Enclosures](#) category:

Click to view products by [Rose Bopla](#) manufacturer:

Other Similar products are found below :

[MR-25L+](#) [1584DMGPK](#) [30-8739](#) [30-9715](#) [30-9777-BU](#) [110-402](#) [A242012LP](#) [A16N12BLP](#) [111-005](#) [9511096](#) [9511016](#) [9820006](#) [1010.600](#)
[AR242410CHSSL](#) [127-406](#) [127-906](#) [79021101](#) [EKIV 17](#) [EKIV 37](#) [18600801](#) [19501001](#) [19701101](#) [19600901](#) [TRH 24](#) [A317SEAL](#)
[A3735SEAL](#) [A3783SEAL](#) [X16C LGR-TR](#) [X25C LGR-TR](#) [T 160 OE HD LGR](#) [T 350 OE HD LGR](#) [T 60 M20](#) [T 60 M20 NL](#) [SDB 03 PS](#)
[P2018SEAL](#) [EN1309N4](#) [EN1511N4LATCH](#) [GSV171](#) [2763-00](#) [2765-00](#) [2761-00](#) [00 070](#) [00 071](#) [0212-00](#) [0213-00](#) [0217-00](#) [0221-00](#) [0222-](#)
[00](#) [0224-00](#) [0225-00](#)