



All dimensions are in mm

Documents

Instruction MA_60W110-C03

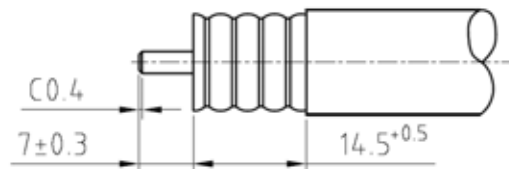
Suitable cables

1/2"R ring corrugated cable

Blades

1 pce 60W110-C03/50
1 pce 60W110-C03/51

Stripping dimension



Packing

Standard 1 pce in box
Weight 210 g/pce

Application feature

The tool can be used for the assembly of the following connector on a 1/2"R ring corrugated cable.
Connector Order No.:

53S1C7-C03N1, 53K1C7-C03N1, 53S2C7-C03N1
60S1C7-C03N1, 60K1C7-C03N1, 60S2C7-C03N1

While the information has been carefully compiled to the best of our knowledge, nothing is intended as representation or warranty on our part and no statement herein shall be construed as recommendation to infringe existing patents. In the effort to improve our products, we reserve the right to make changes judged to be necessary.

Draft	Checker	Approved	Date	Rev.	Engineering change number	Name	Date
Jeff	Roger	Kevin	28.09.09	d	09-0426	Chen XW	25.08.2009
Rosenberger Hochfrequenztechnik GmbH & Co. KG, Germany Tel.: +49 8684 18-0 Fax: +49 8684 18-499 www.rosenberger.de email: info@rosenberger.de				Rosenberger Asia Pacific Electronic Co., Ltd., China Tel.: +86 10 80481995 Fax: +86 10 80497052 www.rosenbergerap.com email: info@rosenbergerap.com			Page 1 / 1

X-ON Electronics

Largest Supplier of Electrical and Electronic Components

Click to view similar products for [RF Connector Tools](#) category:

Click to view products by [Rosenberger](#) manufacturer:

Other Similar products are found below :

[R282125010](#) [R282744220](#) [R282120010](#) [R282320031](#) [R282340000](#) [R282589210](#) [R282967015](#) [R282360003](#) [R282320030](#) [FSTF0208](#)
[R282857000](#) [R282235116](#) [R282120220](#) [AT-2377-DCM5](#) [32W100-005](#) [1055454-1](#) [GK-S400TT](#) [500-12-000](#) [X.FL-LP-IN.OUT1](#) [500-32-010](#)
[W1W002-000](#) [500-32-015](#) [500-32-008](#) [60W000-002](#) [227-T2000](#) [500-12-019](#) [500-32-007](#) [500-32-022](#) [500-38-004](#) [500-38-008](#) [500-80-014](#)
[GK-S240TT](#) [GK-S600TT](#) [GK-S900TT](#) [134-0000-901](#) [140-0000-973](#) [CS10](#) [CS20](#) [D.FL75-LP-N](#) [CTF-360](#) [KTS-8-2](#) [CAS-BNC-T](#)
[R282730040](#) [R282744200](#) [R282868280](#) [R282918120](#) [R282918210](#) [19W002-000](#) [23W100-000](#) [23W100-001](#)