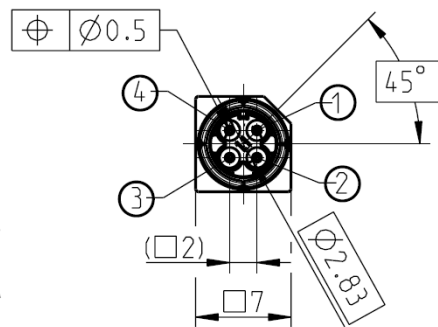
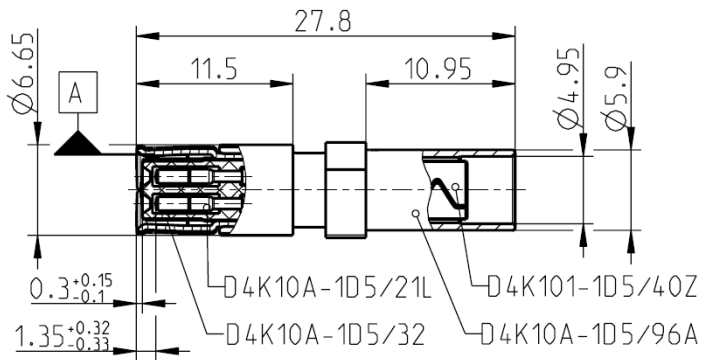


○ = Pinbelegung
○ = PINNING



All dimensions are in mm; tolerances according to ISO 2768 m-H

Interface

According to RN 059-01

Documents

Assembly instruction MA_D4V007 ^{c01}
 Pinning instruction RN 053-01
 Test Specification RN 061-01

Material and plating

Connector parts

Center contact
 Outer contact
 Contact sleeve
 Dielectric
 Crimping ferrule
 Housing
 Secondary lock

Material

Spring bronze
 Brass
 Spring bronze
 PA 12
 Spring bronze
 PBT
 PBT

Plating

Contact=Gold min. 0.15µm; Crimp=Sn min. 1µm
 Nickel, 2.5-5 µm
 Nickel, 2.5-5 µm
 Tin, 0.5-2 µm

Electrical data

Impedance, differential mode	100 Ω differential signalling, for one pair or quad cable shielded
Frequency	DC to 2.0 GHz
Return loss	≥ 20 dB to 1.0 GHz ≥ 17 dB to 2.0 GHz
Insertion loss	≤ 0.1 dB @ 1.0 GHz
Skew (between signal contacts)	≤ 5 psec.
Nearend-Crosstalk	≤ 30 dB
Farend-Crosstalk	≤ 35 dB
Insulation resistance	≥ 1x10 ³ MΩ
Signal contact resistance	≤ 10 mΩ
Outer contact resistance	≤ 7.5 mΩ
Test voltage	250 V rms
Working voltage	100 V rms
Power current	≤ 1.5 A DC
RF-leakage (shielding effectiveness)	≥ 75 dB up to 1 GHz (IEC 62153-4-7) ≥ 65 dB up to 2 GHz (IEC 62153-4-7)

Mechanical data

Mating cycles	≥ 25
Engagement force	≤ 30 N
Disengagement force	≥ 5 N
Retention force latch	≥ 110 N
Retention force primary lock	≥ 80 N
Coding efficiency	≥ 80 N

Environmental data

Temperature range	-40°C to +105°C
Thermal shock	DIN IEC 60068-2-14 Test NA
Temperature and humidity	USCar 2 – 4 5.6.2
Vibration (Random)	DIN IEC 60068-2-64
Mechanical Shock	DIN IEC 60068-2-27
High-Temp. Exposure	DIN IEC 60068-2-2
Soldering profile	acc. to IEC 60068-2-58; Group 3&4
RoHS	compliant

Tooling

Crimping tool	on request
Crimp insert	on request

Suitable cables

Cable type	Dacar 538
------------	-----------

Dieses Dokument ist urheberrechtlich geschützt • This document is protected by copyright • Rosenberger Hochfrequenztechnik GmbH & Co. KG

RF_35/09_14/6.2

Technical Data Sheet

Rosenberger

RosenbergerHSD®

STRAIGHT JACK

D4K10A-1D5A5-Y






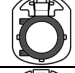

Packing

Standard	100 pcs in box (sample parts)
D4K10A-1D5/96A	500 pcs in box
D4K10A-1D5/21L	500 pcs on reel / 30000 pcs on reel
D4K10A-1D5/32	3000 pcs in box
D4K101-1D5/40Z	250 pcs in box / 2500 pcs on reel
D4Z001-000-Y	250 pcs in box

Weight 5.28 g/pce

Coding

Part Number has to be accomplished by codification

Coding	Jack	Colour	RAL	Part-Number
A		black	sim. 9005	D4K10A-1D5A5-A
B		white	sim. 9001	D4K10A-1D5A5-B
C		blue	sim. 5005	D4K10A-1D5A5-C
D		bordeaux	sim. 4004	D4K10A-1D5A5-D
E		green	sim. 6002	D4K10A-1D5A5-E
F		brown	sim. 8011	D4K10A-1D5A5-F
Z		waterblue	sim. 5021	D4K10A-1D5A5-Z
		traffic purple	sim. 4006	secondary lock

Change History

Rev	Date	Change
c01	23.11.2016	Indication of the assembly instruction corrected: MA_D4V007

While the information has been carefully compiled to the best of our knowledge, nothing is intended as representation or warranty on our part and no statement herein shall be construed as recommendation to infringe existing patents. In the effort to improve our products, we reserve the right to make changes judged to be necessary.

Draft	Date	Approved	Date	Rev.	Engineering change number	Name	Date
M. Zebhauser	08.12.05	J. Schröck	28.11.16	c01	16-1967	R. Gnodtke	28.11.16

Rosenberger Hochfrequenztechnik GmbH & Co. KG
 P.O.Box 1260 D-84526 Tittmoning Germany
www.rosenberger.de

Tel. : +49 8684 18-0
 Email : info@rosenberger.de

Page
 3 / 3

X-ON Electronics

Largest Supplier of Electrical and Electronic Components

Click to view similar products for [RF Connectors / Coaxial Connectors](#) category:

Click to view products by [Rosenberger](#) manufacturer:

Other Similar products are found below :

[89674-0827](#) [6059674-1](#) [630059-000](#) [6501-1071-002](#) [6769](#) [7002-1541-010](#) [7002-1572-002](#) [7004-1512-000](#) [7009-1511-004](#) [7101-1541-010](#)
[7101-1571-002](#) [7105-1521-002](#) [7203-1571-003](#) [7209-1511-011](#) [7210-1511-040](#) [7242-1511-000](#) [7405-1521-005](#) [7405-1521-802](#)
[804S01D04M040](#) [8527](#) [8547](#) [FS11V](#) [877931](#) [8808-1511-001](#) [9049-9513-000](#) [9074-9513-000](#) [PL11C-026](#) [PL40-36](#) [9408-1113-000](#) [980-](#)
[8666-005](#) [11 SMA-50-2-6 / 111 NE](#) [11 SMA-50-3-6 / 111 NE](#) [1-201144-1](#) [120919](#) [R107003010W](#) [R112186000](#) [R113053000W](#) [R113082097](#)
[R113236000](#) [R114083000](#) [R114670000W](#) [R123415000W](#) [R124076320](#) [R124076450](#) [R124175123](#) [R125075000W](#) [R125075001](#)
[R125172000W](#) [R125415030](#) [R141007161](#)