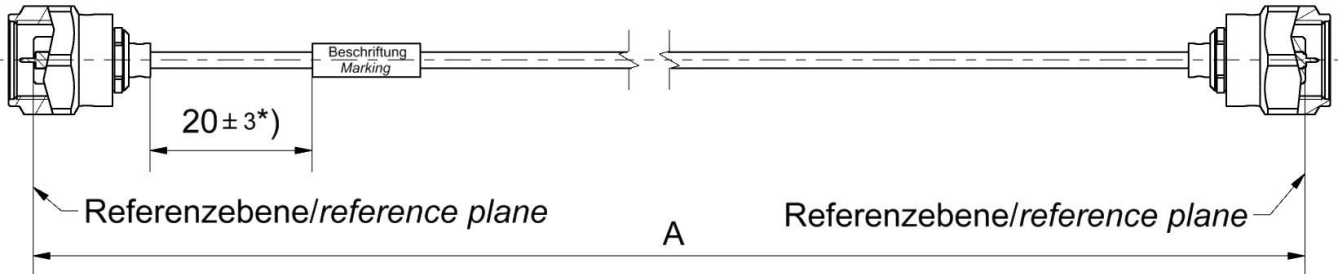


Technical Data Sheet

Rosenberger

Cable assembly
RPC-1.35 Plug – UT-047-TP – RPC-1.35 Plug

L70-324-XXX



All dimensions are in mm; tolerances: ± 3 mm for $A \leq 300$ mm; $\pm 1\%$ for $A > 300$ mm
*) If length "A" ≤ 90 mm marking is mount centric ± 5 mm

Available variants

Type	max. Insertion loss	Marking	Weight (g) / pce
L70-324-XXX	$\leq 0.0022 * \sqrt{f[\text{GHz}]} \frac{\text{dB}}{\text{mm}}$	ROSENBERGER YYY-YY L70-324-XXX	$0.0057 \frac{\text{g}}{\text{mm}} * A[\text{mm}] + 4.4\text{g}$

XXX – length in mm = A Maximum possible length = 2000mm
WW – week YYYY – year

Note: Weight:
First constant = Cable weight per mm; Second Constant = Connector left and Connector right weight per pce

Assembly parts

Connector left	RPC-1.35 Plug
Connector right	RPC-1.35 Plug
Cable	UT-047-TP
Armour	none

Electrical data

Impedance	50 Ω
Frequency	DC to 90 GHz, typical up to 109 GHz
Return loss ¹	≥ 17 dB, DC to 26.5 GHz ≥ 14 dB, 26.5 to 50 GHz ≥ 12 dB, 50 to 90 GHz, typical up to 109 GHz
Insertion loss ¹	see table available variants

¹ Return Loss and Insertion Loss includes the measurement adaptor

Mechanical data

Minimum bend radius:	
Single	20.0 mm
Mating cycles	≤ 50
Maximum torque	1.65 Nm
Recommended torque	0.90 Nm

Environmental data

Temperature range	- 40 °C to +125 °C
RoHS	compliant

While the information has been carefully compiled to the best of our knowledge, nothing is intended as representation or warranty on our part and no statement herein shall be construed as recommendation to infringe existing patents. In the effort to improve our products, we reserve the right to make changes judged to be necessary.

Draft	Date	Approved	Date	Rev.	Engineering change number	Name	Date
Marion Striegler	15.12.17	Ronny Mark	04.11.19	d00	19-2041	Marion Striegler	04.11.19

Rosenberger Hochfrequenztechnik GmbH & Co. KG
P.O.Box 1260 D-84526 Tittmoning Germany
www.rosenberger.de

Tel. : +49 8684 18-0
Email : info@rosenberger.de

Page
1 / 1

X-ON Electronics

Largest Supplier of Electrical and Electronic Components

Click to view similar products for [RF Cable Assemblies](#) category:

Click to view products by [Rosenberger](#) manufacturer:

Other Similar products are found below :

[73-6352-10](#) [73-6353-3](#) [73-6364-6](#) [R285001001](#) [R288940004](#) [145111-05-12.00](#) [1661-C-24](#) [1801171170914KE](#) [24P104C24J1-012](#)
[24P104C24P1-006](#) [24P104C24P1-018](#) [24P204C24J1-003](#) [172-2150-EX](#) [1800920920914PJ](#) [FCB-3030-ALT](#) [21117-046](#) [21117-050](#) [PCX-24-](#)
[50](#) [24P103C24P2-003](#) [25P203C25P2-003](#) [R284008001](#) [R285001021](#) [R285426000](#) [R288940003](#) [4814-BB-24](#) [5260-72](#) [JT2N1-CL1-1F](#) [DLP-](#)
[COAX1](#) [4814-K-48](#) [115101-09-06.00](#) [MXHT83QE3000](#) [CCNTN2-MM-LL335-26](#) [73-6351-25](#) [73-6352-3](#) [73-6353-25](#) [1800920920610PJ](#)
[GD0BQ0BQ024.0](#) [1-3636-600-5210](#) [TL8A-11SMA-11SMA-01500-51](#) [R284C0351060](#) [R288940009](#) [R284C0351028](#) [R288940002](#) [9702-](#)
[1SL-1](#) [PT82NSMA](#) [73-6353-10](#) [R285020301W](#) [PCX-18-50](#) [Minibend-9](#) [Minibend-4](#)