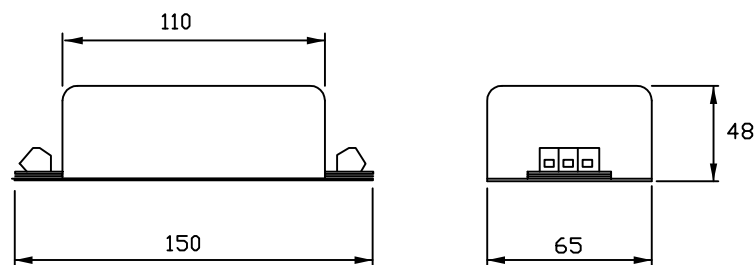
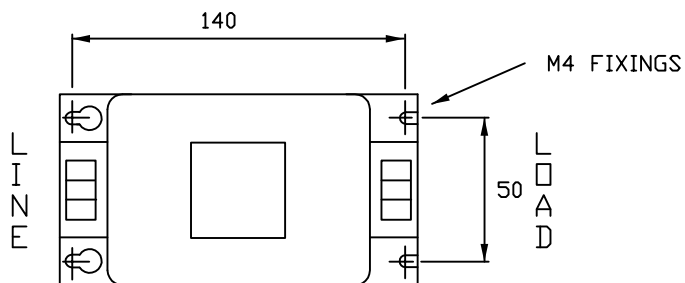
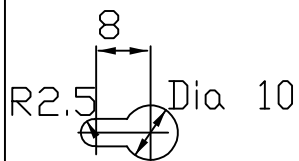


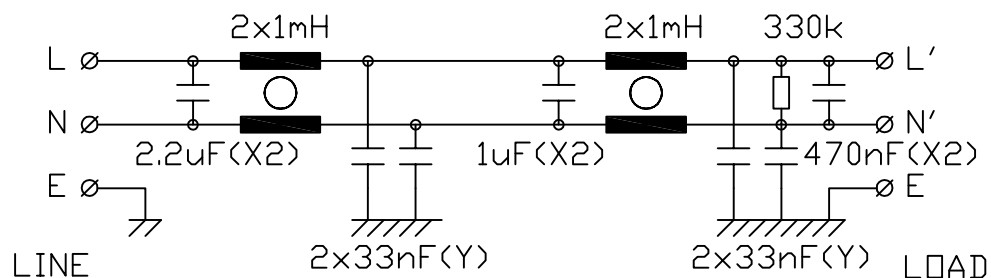
KEYWAY



SPECIFICATION

RATED VOLTAGE	250V
CURRENT	16A AT 40 Deg. C
FREQUENCY	50/60Hz
TEMPERATURE RANGE	-25 TO 85 Deg. C
LEAKAGE CURRENT	6.6mA AT 250V 50Hz
TEST VOLTAGE	2kV DC

ELECTRICAL SCHEMATIC



MINIMUM INSERTION LOSS

Frequency Hz	30k	100k	150k	300k	10M
Common Mode dB	13	55	70	>80	>80
Differential dB		31	45	>55	>55

DrgNo MDF16-GS

TITLE SINGLE PHASE 250V 16A 50/60HZ MAINS FILTER

ALL DIMENSIONS IN MM
ANGLES IN DECIMAL DEGREES

ROXBURGH EMC



ISSUE 2

GENERAL SPECIFICATION
FOR MDF16

CUSTOMER

REFERENCE

Aprvd Date 10/03/03

Aprvd By JRT

Drwn by SW

Scale: NTS

Sheet 1 / 1

X-ON Electronics

Largest Supplier of Electrical and Electronic Components

Click to view similar products for [roxburgh](#) manufacturer:

Other Similar products are found below :

[RES20F06](#) [RES90F10](#) [KMF3100](#) [RIS0622H2](#) [XE12001](#) [SF1121](#) [RES5-FO8](#) [DRF10](#) [CMV10](#) [DVS24](#) [C225](#) [RES20F16](#) [RES20F10](#)
[DVS240](#) [XEB01010](#) [DRF08](#) [RES5-F15](#) [RIP0642H2](#) [DRF06](#) [C215](#) [RES10F06](#) [RES30F03](#) [XE0475](#) [RID-0342-H](#) [RES5-F10](#) [RIR-0622-H](#)
[XE01010](#) [SMV20](#) [SF1123](#) [CMV30](#) [RIR-0222-H](#) [SF1122](#) [SMV40](#) [RIQ-0442-H2](#) [RX730RC+CLIP](#) [SMV10](#) [3CRH30330](#) [CMV20](#) [XE1201](#)
[RE1201](#)