

# ES2AA THRU ES2JA

## Super Fast Recovery Rectifier Diode

### Features

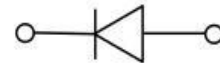
- Ideal for automated placement
- Glass passivated chip junction
- High frequency
- High forward surge capability
- Meets MSL level 1, per J-STD-020,LF maximum peak of 260 °C

### Typical Application

For use in high frequency rectification of power supply, inverters, converters, and freewheeling diodes for consumer and telecommunication.

### Mechanical Data

- Package: DO-214AC(SMA)  
Molding compound meets UL 94 V-0 flammability rating,RoHS-compliant
- Terminals:Tin plated leads, solderable per J-STD-002 and JESD22-B102
- Polarity: Cathode line denotes the cathode end



### ■ Maximum Ratings (Ta=25°C Unless otherwise specified)

PARAMETER	Symbol	Unit	Conditions	ES2							
				AA	BA	CA	DA	FA	GA	HA	JA
Repetitive Peak Reverse Voltage	V <sub>RRM</sub>	V		50	100	150	200	300	400	500	600
Average Forward Current	I <sub>F(AV)</sub>	A	60Hz Half-sine wave, Resistance load, TL=110°C	2.0							
Surge(Nonrepetitive)Forward Current	I <sub>FSM</sub>	A	60HZ Half-sine wave, 1 cycle, Ta=25°C	50							
Storage Temperature	T <sub>stg</sub>	°C		-55 ~ +150							
Junction Temperature	T <sub>j</sub>	°C		-55 ~ +150							

### Electrical Characteristics (Ta=25°C Unless otherwise specified)

PARAMETER	Symbol	Unit	Conditions	ES2							
				AA	BA	CA	DA	FA	GA	HA	JA
Peak Forward Voltage	V <sub>FM</sub>	V	I <sub>F</sub> =2.0A	0.95				1.3		1.7	
Peak Reverse Current	I <sub>RRM1</sub>	µA	V <sub>RM</sub> =V <sub>RRM</sub>	Ta=25°C							
	I <sub>RRM2</sub>			Ta=125°C							
Maximum reverse recovery time	T <sub>rr</sub>	ns	I <sub>F</sub> =0.5A,I <sub>R</sub> =1.0A,I <sub>rr</sub> =0.25A	35							
Thermal Resistance(Typical)	R <sub>θJ-A</sub>	°C/W	Between junction and ambient	75 <sup>1)</sup>							
	R <sub>θJ-L</sub>		Between junction and terminal	20 <sup>1)</sup>							

Notes:

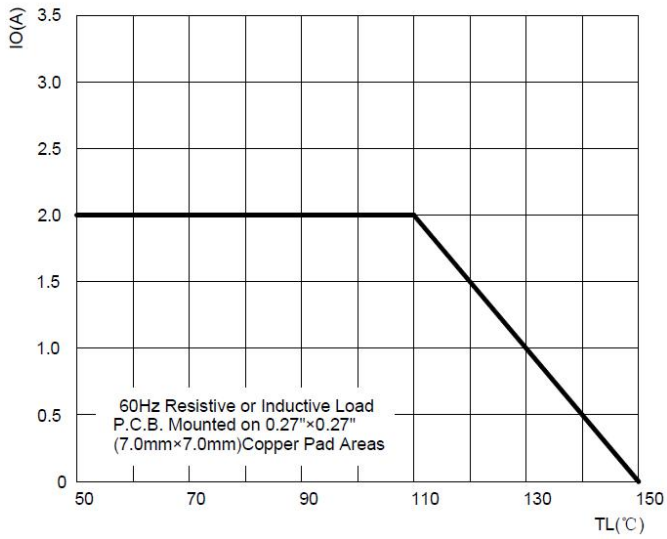
<sup>1)</sup> Thermal resistance from junction to ambientand from junction to lead mounted on P.C.B. with 0.27" x 0.27" (7.0 mm x 7.0 mm)copper pad areas



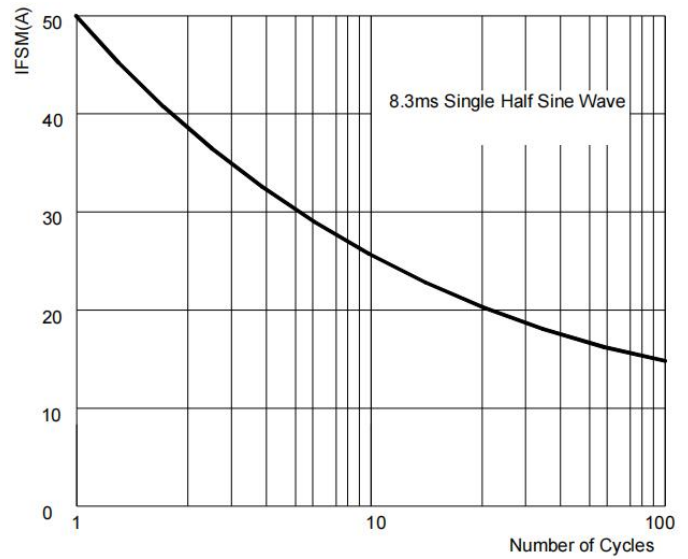
# ES2AA THRU ES2JA

## ■ Characteristics (Typical)

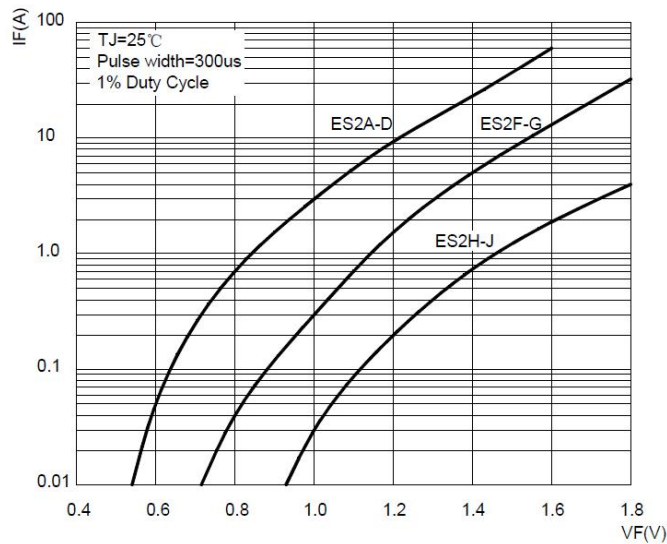
**FIG1: Forward Current Derating Curve**



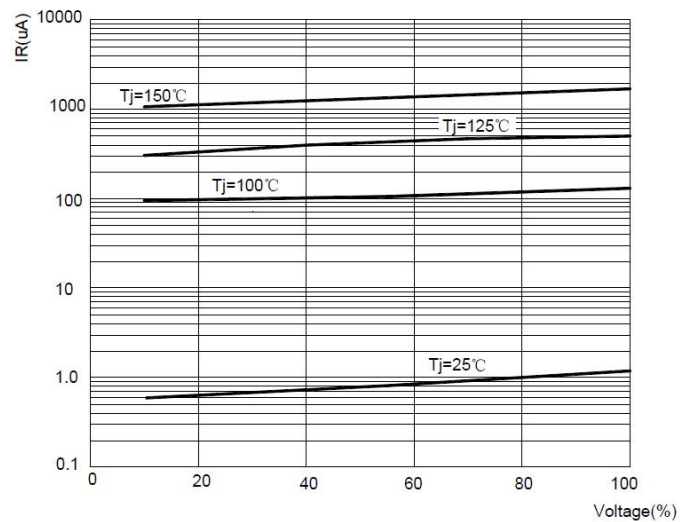
**FIG2: Maximum Non-Repetitive Forward Surge Current**



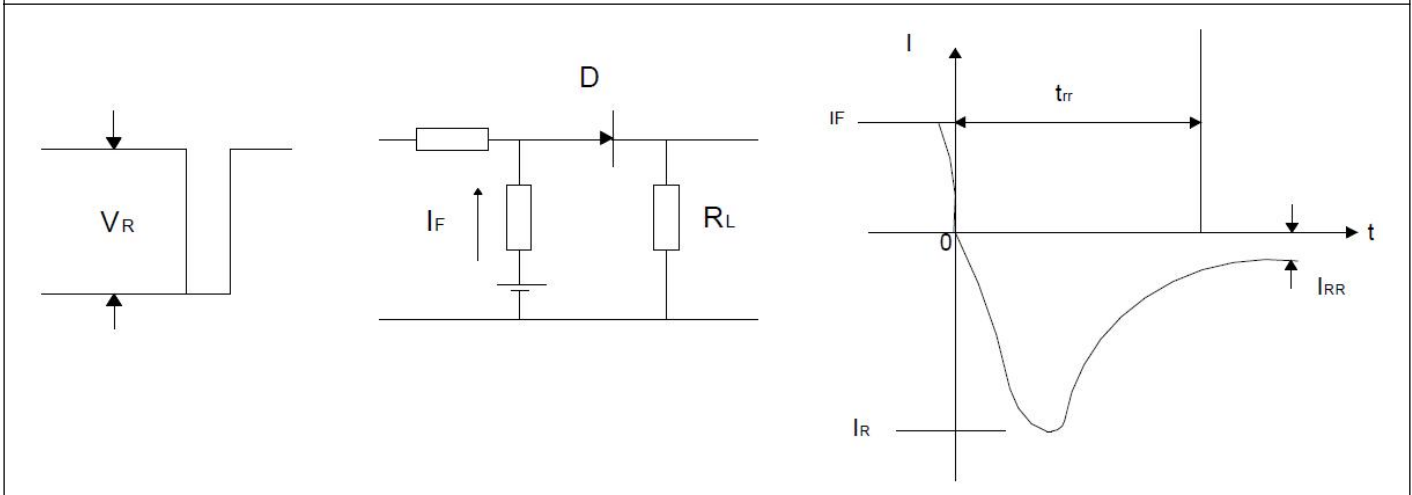
**FIG3: Typical Forward Characteristics**



**FIG4: Typical Reverse Characteristics**



**FIG5: Diagram of circuit and Testing wave form of reverse recovery time**

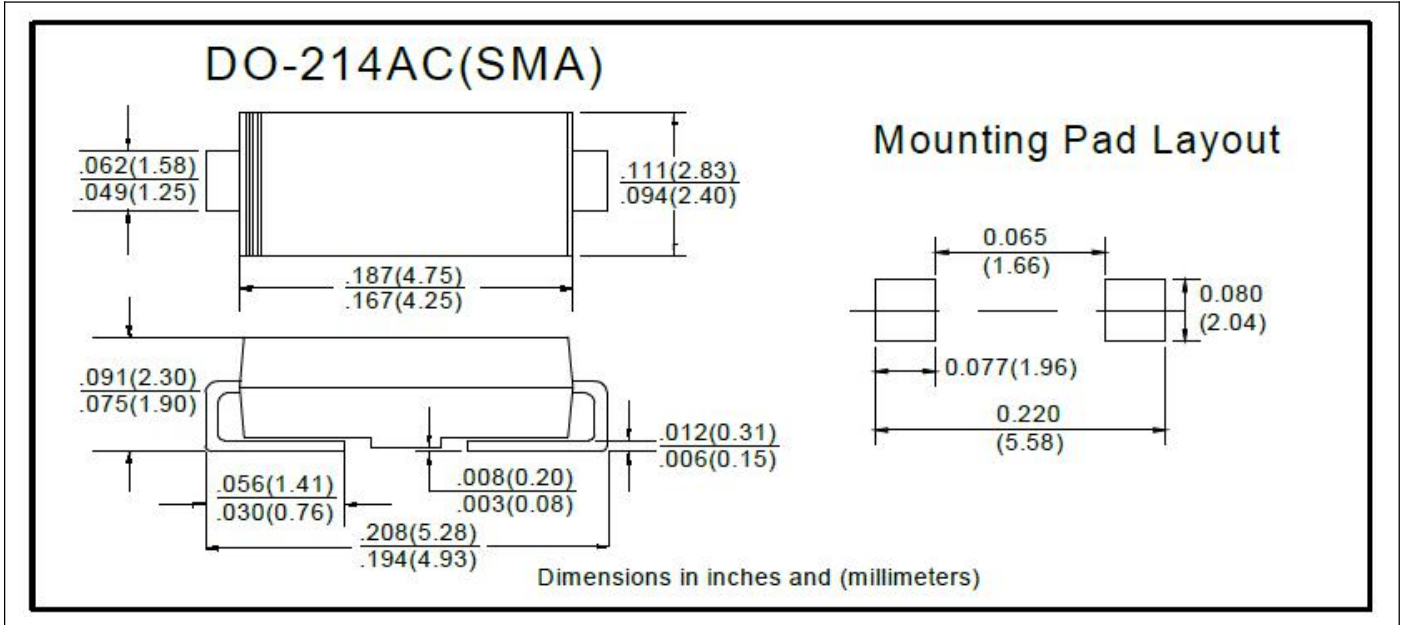


## ES2AA THRU ES2JA

### Ordering Information (Example)

PREFERED	PACKAGE CODE	MINIMUM PACKAGE(pcs)	INNER BOX QUANTITY(pcs)	OUTER CARTON QUANTITY(pcs)	DELIVERY MODE
ES2AA~ES2JA	DO-214AC(SMA)	5000	10000	80000	13" reel
ES2AA~ES2JA	DO-214AC(SMA)	7500	15000	120000	13" reel

### Outline Dimensions



## X-ON Electronics

Largest Supplier of Electrical and Electronic Components

*Click to view similar products for [Rectifiers](#) category:*

*Click to view products by [Ruilongyuan](#) manufacturer:*

Other Similar products are found below :

[70HFR40](#) [FR105 R0](#) [RL252-TP](#) [1N5397](#) [JANTX1N5634A](#) [1N4002G](#) [1N4005-TR](#) [JANS1N6640US](#) [481235F](#) [RRE02VS6SGTR](#) [067907F](#)  
[MS306](#) [US2JFL-TP](#) [A1N5404G-G](#) [CRS12\(T5L,TEMQ\)](#) [ACGRB207-HF](#) [CLH07\(TE16L,Q\)](#) [CLH03\(TE16L,Q\)](#) [ACGRC307-HF](#)  
[ACEFC304-HF](#) [DZ-1380](#) [NTE6356](#) [NTE6359](#) [JAN1N5555](#) [85HFR60](#) [40HFR60](#) [70HF120](#) [85HFR80](#) [D126A45C](#) [SCF7500](#) [SCHJ22.5K](#)  
[SM100](#) [SCPA2](#) [SDHD5K](#) [ACGRA4001-HF](#) [D1821SH45T PR](#) [D1251S45T](#) [NTE6358](#) [NTE5850](#) [NTE5819](#) [NTE5837](#) [NTE5892](#) [NTE5900](#)  
[NTE5911](#) [NTE5915](#) [NTE5921](#) [NTE6104](#) [NTE6105](#) [NTE6154](#) [NTE6158](#)