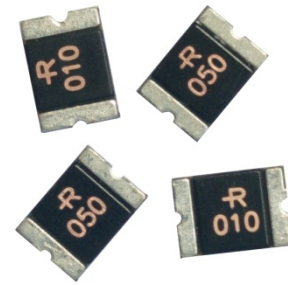


**Description**

The 1812 series provides miniature surface mount resettable over-current protection with holding current from 0.1A to 4.0A. This series is suitable for ultra portable applications where space is at a premium and the device current is low.



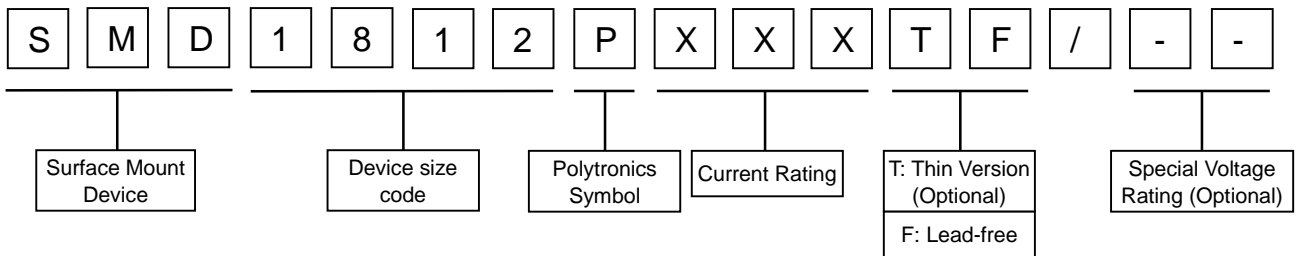
**Features**

- I I(hold): 0.1~4.0A
- I Very high voltage surge capabilities
- I Available in lead-free version
- I Fast response to fault current
- I RoHS compliant, Lead- Free and Halogen-Free
- I Low resistance
- I Compact design saves board space
- I Compatible with high temperature solders

**Applications**

- I USB peripherals
- I Disk drives
- I CD-ROMs
- I General electronics
- I Disk drives
- I Set-top-box and HDMI
- I Mobile Internet Device (MID)
- I PDAs / digital cameras
- I Game console port protection
- I Plug and play protection for motherboards and peripherals
- I Mobile phones - battery and port protection

**Part Number Code**



**Environmental Specifications**

| Test                  | Conditions                | Resistance change |
|-----------------------|---------------------------|-------------------|
| Passive aging         | +85°C, 1000 hrs           | ±5% typical       |
| Humidity aging        | +85°C, 85%R.H., 168 hours | ±5% typical       |
| Thermal shock         | +85°C to -40°C, 20times   | ±33% typical      |
| Resistance to solvent | MIL-STD-202, Method 215   | No change         |
| Vibration             | MIL-STD-202, Method 201   | No change         |

Ambient operating conditions : - 40 °C to +85 °C

Maximum surface temperature of the device in the tripped state is 125 °C



**Performance Specification**

| Type Number      | $I_{hold}$ | $I_{trip}$ | $V_{max}$ | Max. Time to Trip |             | $I_{max}$ | $P_d$ typ | $R_{i_{min}}$ | $R_{1_{max}}$ | Package |
|------------------|------------|------------|-----------|-------------------|-------------|-----------|-----------|---------------|---------------|---------|
|                  | A          | A          | $V_{DC}$  | Current A         | $T_{max}$ S | A         | W         | $\Omega$      | $\Omega$      |         |
| SMD1812P010TF    | 0.1        | 0.3        | 30        | 0.5               | 1.5         | 30        | 0.8       | 0.75          | 15            | 1812    |
| SMD1812P010TF/60 | 0.1        | 0.3        | 60        | 0.5               | 1.5         | 30        | 0.8       | 0.75          | 15            | 1812    |
| SMD1812P014TF    | 0.14       | 0.34       | 60        | 1.5               | 0.15        | 30        | 0.8       | 0.65          | 6             | 1812    |
| SMD1812P020TF    | 0.2        | 0.4        | 30        | 8                 | 0.02        | 30        | 0.8       | 0.35          | 5             | 1812    |
| SMD1812P020TF/60 | 0.2        | 0.4        | 60        | 8                 | 0.02        | 30        | 0.8       | 0.35          | 5             | 1812    |
| SMD1812P030TF    | 0.3        | 0.6        | 30        | 8                 | 0.1         | 30        | 0.8       | 0.25          | 3             | 1812    |
| SMD1812P030TF/60 | 0.3        | 0.6        | 60        | 8                 | 0.1         | 30        | 0.8       | 0.25          | 3             | 1812    |
| SMD1812P050TF    | 0.5        | 1.0        | 15        | 8                 | 0.15        | 30        | 0.8       | 0.15          | 1.0           | 1812    |
| SMD1812P050TF/30 | 0.5        | 1.0        | 30        | 8                 | 0.15        | 30        | 0.8       | 0.15          | 1.0           | 1812    |
| SMD1812P050TF/60 | 0.5        | 1.0        | 60        | 8                 | 0.15        | 30        | 0.8       | 0.15          | 1.4           | 1812    |
| SMD1812P075TF    | 0.75       | 1.5        | 13.2      | 8                 | 0.2         | 30        | 0.8       | 0.09          | 0.45          | 1812    |
| SMD1812P075TF/16 | 0.75       | 1.5        | 16        | 8                 | 0.2         | 30        | 0.8       | 0.09          | 0.45          | 1812    |
| SMD1812P075TF/24 | 0.75       | 1.5        | 24        | 8                 | 0.2         | 30        | 0.8       | 0.09          | 0.45          | 1812    |
| SMD1812P075TF/33 | 0.75       | 1.5        | 33        | 8                 | 0.2         | 30        | 0.8       | 0.09          | 0.45          | 1812    |
| SMD1812P110TF    | 1.1        | 2.2        | 8         | 8                 | 0.3         | 35        | 0.8       | 0.045         | 0.25          | 1812    |
| SMD1812P110TF/16 | 1.1        | 2.2        | 16        | 8                 | 0.3         | 35        | 0.8       | 0.05          | 0.25          | 1812    |
| SMD1812P110TF/24 | 1.1        | 2.2        | 24        | 8                 | 0.3         | 35        | 0.8       | 0.05          | 0.25          | 1812    |
| SMD1812P110TF/33 | 1.1        | 2.2        | 33        | 8                 | 0.3         | 35        | 0.8       | 0.05          | 0.25          | 1812    |
| SMD1812P125TF    | 1.25       | 2.5        | 16        | 8                 | 0.4         | 35        | 0.8       | 0.05          | 0.14          | 1812    |
| SMD1812P150TF    | 1.5        | 3          | 8         | 8                 | 0.5         | 35        | 0.8       | 0.04          | 0.16          | 1812    |
| SMD1812P150TF/16 | 1.5        | 3          | 16        | 8                 | 0.5         | 35        | 0.8       | 0.04          | 0.16          | 1812    |
| SMD1812P150TF/24 | 1.5        | 3          | 24        | 8                 | 0.5         | 35        | 0.8       | 0.04          | 0.16          | 1812    |
| SMD1812P150TF/33 | 1.5        | 3          | 33        | 8                 | 0.5         | 35        | 0.8       | 0.04          | 0.16          | 1812    |
| SMD1812P160TF    | 1.6        | 2.8        | 8         | 8                 | 1           | 35        | 0.8       | 0.03          | 0.13          | 1812    |
| SMD1812P200TF    | 2          | 4          | 8         | 8                 | 2           | 35        | 0.8       | 0.02          | 0.1           | 1812    |
| SMD1812P200TF/16 | 2          | 4          | 16        | 8                 | 2           | 35        | 0.8       | 0.02          | 0.1           | 1812    |
| SMD1812P200TF/24 | 2          | 4          | 24        | 8                 | 2           | 35        | 0.8       | 0.02          | 0.1           | 1812    |
| SMD1812P260TF    | 2.6        | 5          | 8         | 8                 | 2.5         | 35        | 0.8       | 0.01          | 0.05          | 1812    |
| SMD1812P260TF/16 | 2.6        | 5          | 16        | 8                 | 2.5         | 35        | 0.8       | 0.01          | 0.05          | 1812    |
| SMD1812P260TF/24 | 2.6        | 5          | 24        | 8                 | 2.5         | 35        | 0.8       | 0.01          | 0.05          | 1812    |
| SMD1812P300TF    | 3          | 5          | 8         | 8                 | 4           | 35        | 0.8       | 0.01          | 0.04          | 1812    |
| SMD1812P300TF/16 | 3          | 5          | 16        | 8                 | 4           | 35        | 0.8       | 0.01          | 0.04          | 1812    |
| SMD1812P350TF    | 3.5        | 6          | 6         | 10                | 4           | 35        | 2         | 0.008         | 0.03          | 1812    |
| SMD1812P350TF/16 | 3.5        | 6          | 16        | 10                | 4           | 35        | 2         | 0.008         | 0.03          | 1812    |
| SMD1812P400TF    | 4          | 7          | 6         | 10                | 4           | 35        | 2         | 0.005         | 0.025         | 1812    |

$V_{max}$  = Maximum operating voltage device can withstand without damage at rated current ( $I_{max}$ ).

$I_{max}$  = Maximum fault current device can withstand without damage at rated voltage ( $V_{max}$ ).

$I_{hold}$  = Hold Current. Maximum current device will not trip in 25°C still air.

$I_{trip}$  = Trip Current. Minimum current at which the device will always trip in 25°C still air.

$P_d$  = Power dissipation when device is in the tripped state in 25°C still air environment at rated voltage.

$R_{i_{min/max}}$  = Minimum/Maximum device resistance prior to tripping at 25°C.

$R_{1_{max}}$  = Maximum device resistance is measured one hour post reflow.

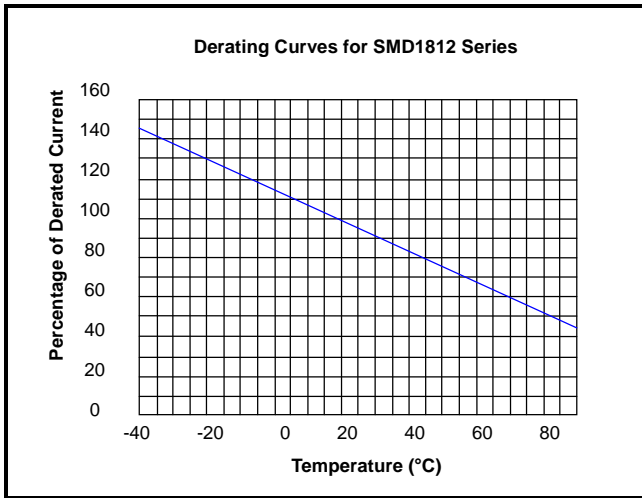


**Thermal Derating Chart-Ih(A)**

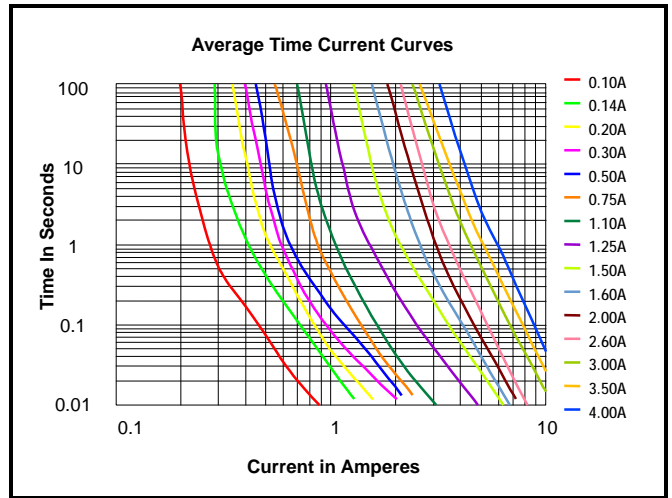
| Part Number      | Ambient Operation Temperature |        |      |       |       |       |       |       |       |
|------------------|-------------------------------|--------|------|-------|-------|-------|-------|-------|-------|
|                  | -40 °C                        | -20 °C | 0 °C | 25 °C | 40 °C | 50 °C | 60 °C | 70 °C | 85 °C |
| SMD1812P010TF    | 0.16                          | 0.14   | 0.12 | 0.10  | 0.08  | 0.07  | 0.06  | 0.05  | 0.03  |
| SMD1812P010TF/60 | 0.16                          | 0.14   | 0.12 | 0.10  | 0.08  | 0.07  | 0.06  | 0.05  | 0.03  |
| SMD1812P014TF    | 0.23                          | 0.19   | 0.17 | 0.14  | 0.12  | 0.10  | 0.09  | 0.08  | 0.06  |
| SMD1812P020TF    | 0.29                          | 0.26   | 0.23 | 0.20  | 0.17  | 0.15  | 0.14  | 0.12  | 0.10  |
| SMD1812P020TF/60 | 0.29                          | 0.26   | 0.23 | 0.20  | 0.17  | 0.15  | 0.14  | 0.12  | 0.10  |
| SMD1812P030TF    | 0.44                          | 0.39   | 0.35 | 0.30  | 0.26  | 0.23  | 0.21  | 0.18  | 0.15  |
| SMD1812P030TF/60 | 0.44                          | 0.39   | 0.35 | 0.30  | 0.26  | 0.23  | 0.21  | 0.18  | 0.15  |
| SMD1812P050TF    | 0.59                          | 0.57   | 0.55 | 0.50  | 0.45  | 0.43  | 0.35  | 0.30  | 0.23  |
| SMD1812P050TF/30 | 0.59                          | 0.57   | 0.55 | 0.50  | 0.45  | 0.43  | 0.35  | 0.30  | 0.23  |
| SMD1812P050TF/60 | 0.59                          | 0.57   | 0.55 | 0.50  | 0.45  | 0.43  | 0.35  | 0.30  | 0.23  |
| SMD1812P075TF    | 1.10                          | 0.99   | 0.87 | 0.75  | 0.63  | 0.57  | 0.49  | 0.45  | 0.35  |
| SMD1812P075TF/16 | 1.10                          | 0.99   | 0.87 | 0.75  | 0.63  | 0.57  | 0.49  | 0.45  | 0.35  |
| SMD1812P075TF/24 | 1.10                          | 0.99   | 0.87 | 0.75  | 0.63  | 0.57  | 0.49  | 0.45  | 0.35  |
| SMD1812P075TF/33 | 1.10                          | 0.99   | 0.87 | 0.75  | 0.63  | 0.57  | 0.49  | 0.45  | 0.35  |
| SMD1812P110TF    | 1.60                          | 1.45   | 1.28 | 1.10  | 0.92  | 0.83  | 0.71  | 0.66  | 0.52  |
| SMD1812P110TF/16 | 1.60                          | 1.45   | 1.28 | 1.10  | 0.92  | 0.83  | 0.71  | 0.66  | 0.52  |
| SMD1812P110TF/24 | 1.60                          | 1.45   | 1.28 | 1.10  | 0.92  | 0.83  | 0.71  | 0.66  | 0.52  |
| SMD1812P110TF/33 | 1.60                          | 1.45   | 1.28 | 1.10  | 0.92  | 0.83  | 0.71  | 0.66  | 0.52  |
| SMD1812P125TF    | 2.00                          | 1.75   | 1.52 | 1.25  | 1.00  | 0.95  | 0.90  | 0.75  | 0.53  |
| SMD1812P150TF    | 2.10                          | 1.96   | 1.77 | 1.50  | 1.23  | 1.09  | 0.95  | 0.82  | 0.61  |
| SMD1812P150TF/16 | 2.10                          | 1.96   | 1.77 | 1.50  | 1.23  | 1.09  | 0.95  | 0.82  | 0.61  |
| SMD1812P150TF/24 | 2.10                          | 1.96   | 1.77 | 1.50  | 1.23  | 1.09  | 0.95  | 0.82  | 0.61  |
| SMD1812P150TF/33 | 2.10                          | 1.96   | 1.77 | 1.50  | 1.23  | 1.09  | 0.95  | 0.82  | 0.61  |
| SMD1812P160TF    | 2.30                          | 2.05   | 1.88 | 1.60  | 1.26  | 1.12  | 0.98  | 0.84  | 0.63  |
| SMD1812P200TF    | 2.88                          | 2.61   | 2.25 | 2.00  | 1.80  | 1.66  | 1.45  | 1.09  | 0.80  |
| SMD1812P200TF/16 | 2.88                          | 2.61   | 2.25 | 2.00  | 1.80  | 1.66  | 1.45  | 1.09  | 0.80  |
| SMD1812P200TF/24 | 2.88                          | 2.61   | 2.25 | 2.00  | 1.80  | 1.66  | 1.45  | 1.09  | 0.80  |
| SMD1812P260TF    | 3.90                          | 3.42   | 2.96 | 2.60  | 2.33  | 2.07  | 1.94  | 1.35  | 1.00  |
| SMD1812P260TF/16 | 3.90                          | 3.42   | 2.96 | 2.60  | 2.33  | 2.07  | 1.94  | 1.35  | 1.00  |
| SMD1812P260TF/24 | 3.90                          | 3.42   | 2.96 | 2.60  | 2.33  | 2.07  | 1.94  | 1.35  | 1.00  |
| SMD1812P300TF    | 4.15                          | 3.76   | 3.46 | 3.00  | 2.55  | 2.28  | 2.01  | 1.61  | 1.33  |
| SMD1812P300TF/16 | 4.15                          | 3.76   | 3.46 | 3.00  | 2.55  | 2.28  | 2.01  | 1.61  | 1.33  |
| SMD1812P350TF    | 4.84                          | 4.39   | 4.04 | 3.50  | 2.98  | 2.66  | 2.35  | 1.88  | 1.55  |
| SMD1812P350TF/16 | 4.84                          | 4.39   | 4.04 | 3.50  | 2.98  | 2.66  | 2.35  | 1.88  | 1.55  |
| SMD1812P400TF    | 5.80                          | 5.20   | 4.60 | 4.00  | 3.35  | 3.12  | 2.75  | 2.45  | 2.10  |



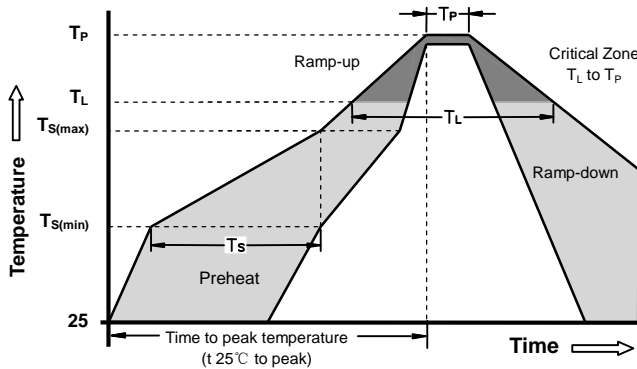
**Thermal Derating Curve**



**Average Time-Current Curve**



**Soldering Parameters**



| Reflow Condition                                     |                                   | Pb - Free assembly |
|--|-----------------------------------|--------------------|
| Pre Heat   | -Temperature Min ( $T_{S(min)}$ ) | 150°C              |
|  | -Temperature Max ( $T_{S(max)}$ ) | 200°C              |
|  | - Time (min to max) ( $t_s$ )     | 60 - 180 Seconds   |
| Average ramp up rate ( Liquids Temp $T_L$ ) to peak  |                                   | 3°C/second max     |
| $T_{S(max)}$ to $T_L$ - Ramp-up Rate                 |                                   | 3°C/second max     |
| Reflow   | - Temperature ( $T_L$ ) (Liquids) | 217°C              |
|  | - Time (min to max) ( $t_s$ )     | 60 - 150 Seconds   |
| Peak Temperature ( $T_P$ )                           |                                   | 260 +0/-5°C        |
| Time within 5°C of actual peak Temperature ( $t_p$ ) |                                   | 20 - 40 Seconds    |
| Ramp-down Rate                                       |                                   | 6°C/second max     |
| Time 25°C to peak Temperature ( $T_P$ )              |                                   | 8 minutes Max      |
| Do not exceed  |                                   | 260°C              |

| Lead style code | Recommended Pad Layout (mm.) |
|-----------------|------------------------------|
|                 |                              |

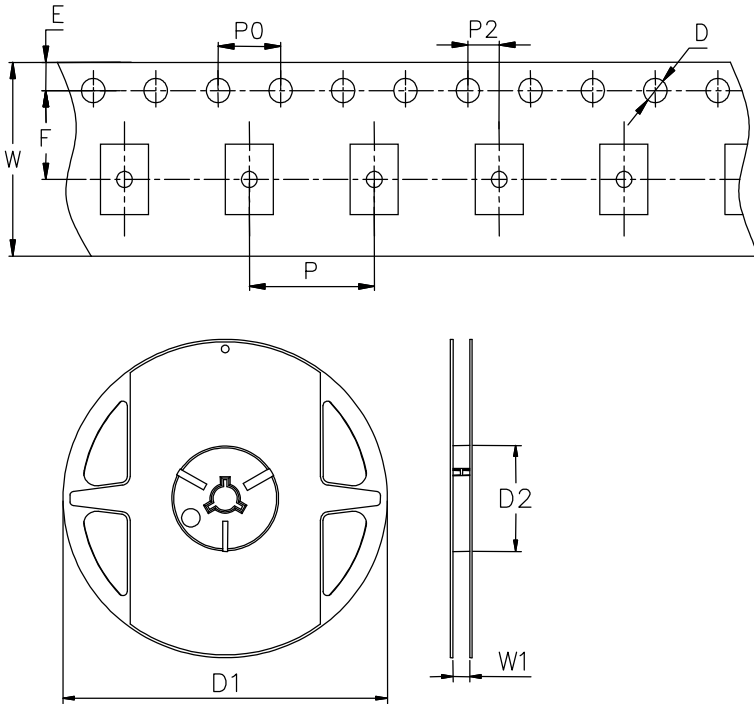


**Dimensions**

| Type Number      | Package Dimensions (mm) |      |      |      |      |      |     | Package Dimensions (in) |       |       |       |       |       |       |
|------------------|-------------------------|------|------|------|------|------|-----|-------------------------|-------|-------|-------|-------|-------|-------|
|                  | A                       |      | B    |      | C    |      | D   | A                       |       | B     |       | C     |       | D     |
|                  | min                     | max  | min  | max  | min  | max  | min | min                     | max   | min   | max   | min   | max   | min   |
| SMD1812P010TF    | 4.37                    | 4.73 | 3.07 | 3.41 | 0.50 | 1.10 | 0.3 | 0.172                   | 0.186 | 0.121 | 0.134 | 0.02  | 0.043 | 0.012 |
| SMD1812P010TF/60 | 4.37                    | 4.73 | 3.07 | 3.41 | 0.50 | 1.10 | 0.3 | 0.172                   | 0.186 | 0.121 | 0.134 | 0.02  | 0.043 | 0.012 |
| SMD1812P014TF    | 4.37                    | 4.73 | 3.07 | 3.41 | 0.50 | 1.10 | 0.3 | 0.172                   | 0.186 | 0.121 | 0.134 | 0.02  | 0.043 | 0.012 |
| SMD1812P020TF    | 4.37                    | 4.73 | 3.07 | 3.41 | 0.50 | 1.10 | 0.3 | 0.172                   | 0.186 | 0.121 | 0.134 | 0.02  | 0.043 | 0.012 |
| SMD1812P020TF/60 | 4.37                    | 4.73 | 3.07 | 3.41 | 0.50 | 1.10 | 0.3 | 0.172                   | 0.186 | 0.121 | 0.134 | 0.02  | 0.043 | 0.012 |
| SMD1812P030TF    | 4.37                    | 4.73 | 3.07 | 3.41 | 0.50 | 1.10 | 0.3 | 0.172                   | 0.186 | 0.121 | 0.134 | 0.02  | 0.043 | 0.012 |
| SMD1812P030TF/60 | 4.37                    | 4.73 | 3.07 | 3.41 | 0.50 | 1.10 | 0.3 | 0.172                   | 0.186 | 0.121 | 0.134 | 0.02  | 0.043 | 0.012 |
| SMD1812P050TF    | 4.37                    | 4.73 | 3.07 | 3.41 | 0.40 | 1.00 | 0.3 | 0.172                   | 0.186 | 0.121 | 0.134 | 0.016 | 0.039 | 0.012 |
| SMD1812P050TF/30 | 4.37                    | 4.73 | 3.07 | 3.41 | 0.40 | 1.00 | 0.3 | 0.172                   | 0.186 | 0.121 | 0.134 | 0.016 | 0.039 | 0.012 |
| SMD1812P050TF/60 | 4.37                    | 4.73 | 3.07 | 3.41 | 0.50 | 1.10 | 0.3 | 0.172                   | 0.186 | 0.121 | 0.134 | 0.02  | 0.043 | 0.012 |
| SMD1812P075TF    | 4.37                    | 4.73 | 3.07 | 3.41 | 0.50 | 1.10 | 0.3 | 0.172                   | 0.186 | 0.121 | 0.134 | 0.02  | 0.043 | 0.012 |
| SMD1812P075TF/16 | 4.37                    | 4.73 | 3.07 | 3.41 | 0.50 | 1.10 | 0.3 | 0.172                   | 0.186 | 0.121 | 0.134 | 0.02  | 0.043 | 0.012 |
| SMD1812P075TF/24 | 4.37                    | 4.73 | 3.07 | 3.41 | 0.60 | 1.30 | 0.3 | 0.172                   | 0.186 | 0.121 | 0.134 | 0.024 | 0.051 | 0.012 |
| SMD1812P075TF/33 | 4.37                    | 4.73 | 3.07 | 3.41 | 0.60 | 1.30 | 0.3 | 0.172                   | 0.186 | 0.121 | 0.134 | 0.024 | 0.051 | 0.012 |
| SMD1812P110TF    | 4.37                    | 4.73 | 3.07 | 3.41 | 0.40 | 1.00 | 0.3 | 0.172                   | 0.186 | 0.121 | 0.134 | 0.016 | 0.039 | 0.012 |
| SMD1812P110TF/16 | 4.37                    | 4.73 | 3.07 | 3.41 | 0.40 | 1.00 | 0.3 | 0.172                   | 0.186 | 0.121 | 0.134 | 0.016 | 0.039 | 0.012 |
| SMD1812P110TF/24 | 4.37                    | 4.73 | 3.07 | 3.41 | 0.60 | 1.30 | 0.3 | 0.172                   | 0.186 | 0.121 | 0.134 | 0.024 | 0.051 | 0.012 |
| SMD1812P110TF/33 | 4.37                    | 4.73 | 3.07 | 3.41 | 0.60 | 1.30 | 0.3 | 0.172                   | 0.186 | 0.121 | 0.134 | 0.024 | 0.051 | 0.012 |
| SMD1812P125TF    | 4.37                    | 4.73 | 3.07 | 3.41 | 0.40 | 1.00 | 0.3 | 0.172                   | 0.186 | 0.121 | 0.134 | 0.016 | 0.039 | 0.012 |
| SMD1812P150TF    | 4.37                    | 4.73 | 3.07 | 3.41 | 0.50 | 1.10 | 0.3 | 0.172                   | 0.186 | 0.121 | 0.134 | 0.02  | 0.043 | 0.012 |
| SMD1812P150TF/16 | 4.37                    | 4.73 | 3.07 | 3.41 | 0.50 | 1.10 | 0.3 | 0.172                   | 0.186 | 0.121 | 0.134 | 0.02  | 0.043 | 0.012 |
| SMD1812P150TF/24 | 4.37                    | 4.73 | 3.07 | 3.41 | 0.50 | 1.10 | 0.3 | 0.172                   | 0.186 | 0.121 | 0.134 | 0.02  | 0.043 | 0.012 |
| SMD1812P150TF/33 | 4.37                    | 4.73 | 3.07 | 3.41 | 0.80 | 1.50 | 0.3 | 0.172                   | 0.186 | 0.121 | 0.134 | 0.031 | 0.059 | 0.012 |
| SMD1812P160TF    | 4.37                    | 4.73 | 3.07 | 3.41 | 0.50 | 1.10 | 0.3 | 0.172                   | 0.186 | 0.121 | 0.134 | 0.02  | 0.043 | 0.012 |
| SMD1812P200TF    | 4.37                    | 4.73 | 3.07 | 3.41 | 0.50 | 1.10 | 0.3 | 0.172                   | 0.186 | 0.121 | 0.134 | 0.02  | 0.043 | 0.012 |
| SMD1812P200TF/16 | 4.37                    | 4.73 | 3.07 | 3.41 | 0.50 | 1.10 | 0.3 | 0.172                   | 0.186 | 0.121 | 0.134 | 0.02  | 0.043 | 0.012 |
| SMD1812P200TF/24 | 4.37                    | 4.73 | 3.07 | 3.41 | 0.80 | 1.50 | 0.3 | 0.172                   | 0.186 | 0.121 | 0.134 | 0.031 | 0.059 | 0.012 |
| SMD1812P260TF    | 4.37                    | 4.73 | 3.07 | 3.41 | 0.80 | 1.50 | 0.3 | 0.172                   | 0.186 | 0.121 | 0.134 | 0.031 | 0.059 | 0.012 |
| SMD1812P260TF/16 | 4.37                    | 4.73 | 3.07 | 3.41 | 0.80 | 1.50 | 0.3 | 0.172                   | 0.186 | 0.121 | 0.134 | 0.031 | 0.059 | 0.012 |
| SMD1812P260TF/24 | 4.37                    | 4.73 | 3.07 | 3.41 | 0.80 | 1.50 | 0.3 | 0.172                   | 0.186 | 0.121 | 0.134 | 0.031 | 0.059 | 0.012 |
| SMD1812P300TF    | 4.37                    | 4.73 | 3.07 | 3.41 | 0.80 | 1.50 | 0.3 | 0.172                   | 0.186 | 0.121 | 0.134 | 0.031 | 0.059 | 0.012 |
| SMD1812P300TF/16 | 4.37                    | 4.73 | 3.07 | 3.41 | 0.80 | 1.50 | 0.3 | 0.172                   | 0.186 | 0.121 | 0.134 | 0.031 | 0.059 | 0.012 |
| SMD1812P350TF    | 4.37                    | 4.73 | 3.07 | 3.41 | 0.80 | 1.50 | 0.3 | 0.172                   | 0.186 | 0.121 | 0.134 | 0.031 | 0.059 | 0.012 |
| SMD1812P350TF/16 | 4.37                    | 4.73 | 3.07 | 3.41 | 0.80 | 1.50 | 0.3 | 0.172                   | 0.186 | 0.121 | 0.134 | 0.031 | 0.059 | 0.012 |
| SMD1812P400TF    | 4.37                    | 4.73 | 3.07 | 3.41 | 0.80 | 1.50 | 0.3 | 0.172                   | 0.186 | 0.121 | 0.134 | 0.031 | 0.059 | 0.012 |



**Taping and Reel Specifications**



| Symbol   | Millimeters | Inches      |
|----------|-------------|-------------|
| W        | 12.0±0.3    | 0.472±0.012 |
| P        | 8.0±0.1     | 0.315±0.004 |
| F        | 5.5±0.05    | 0.217±0.002 |
| E        | 1.75±0.1    | 0.069±0.004 |
| D        | 1.55±0.05   | 0.061±0.002 |
| P0       | 4.0±0.1     | 0.157±0.004 |
| P2       | 2.0±0.05    | 0.079±0.002 |
| D1(max.) | 178.0       | 7.007       |
| D2(min.) | 60          | 2.362       |
| W1       | 12.4±0.5    | 0.488±0.02  |

| Part Number   | Halogen Free | Packaging Option | Quantity | Quantity & Packaging Codes |
|---------------|--------------|------------------|----------|----------------------------|
| SMD1812PxxxTF | Yes          | Tape and Reel    | 1500     | YR                         |



## X-ON Electronics

Largest Supplier of Electrical and Electronic Components

*Click to view similar products for [Resettable Fuses - PPTC](#) category:*

*Click to view products by [Ruilongyuan](#) manufacturer:*

Other Similar products are found below :

[RF0077-000](#) [RF3256-000](#) [RF3281-000](#) [RF3301-000](#) [RF3341-000](#) [RF3344-000](#) [RF3382-000](#) [SMD125-2](#) [RF2171-000](#) [RF2531-000](#) [RF2873-000](#) [RF3060-000](#) [TR600-150Q-B-0.5-0.130](#) [RXE090](#) [5E4795/04-1502](#) [TRF250-080T-B-1.0-0.125](#) [SMD100-2](#) [NIS5452MT1TXG](#) [NIS5431MT1TXG](#) [SMD250-2](#) [0ZCM0001FF2G](#) [0ZCM0003FF2G](#) [0ZCM0004FF2G](#) [BK60-017-DZ-E0.6](#) [F95456-000](#) [LVR100S](#) [RS30-090](#) [RS30-110](#) [RS30-600](#) [RS30-700](#) [RS30-800](#) [RS30-900](#) [RS60RB-005](#) [RS60RB-010](#) [RS60RB-020](#) [RS60RB-025](#) [RS60RB-050](#) [RS60RB-075](#) [RS60RB-160](#) [RS60SB-250](#) [ASMD0603-010-30V](#) [ASMD0603-025-16V](#) [ASMD2920-260-24V](#) [BSMD0603-025-12V](#) [BSMD1206-150-12V](#) [BSMD0805-020-33V](#) [BSMD1206-075-13.2V](#) [BSMD2920-400-6V](#) [BSMD2920-300-6V](#) [BSMD2920-700-6V](#)