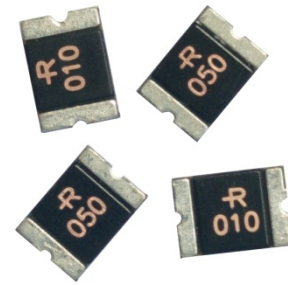


Description

The 1812 series provides miniature surface mount resettable over-current protection with holding current from 0.1A to 4.0A. This series is suitable for ultra portable applications where space is at a premium and the device current is low.



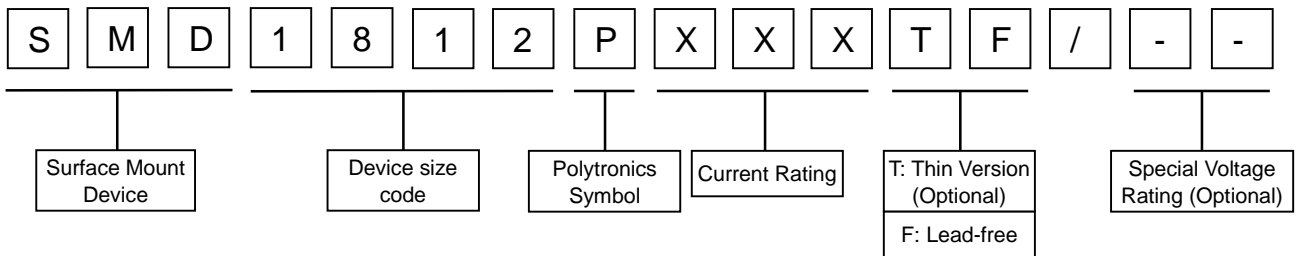
Features

- I I(hold): 0.1~4.0A
- I Very high voltage surge capabilities
- I Available in lead-free version
- I Fast response to fault current
- I RoHS compliant, Lead- Free and Halogen-Free
- I Low resistance
- I Compact design saves board space
- I Compatible with high temperature solders

Applications

- I USB peripherals
- I Disk drives
- I CD-ROMs
- I General electronics
- I Disk drives
- I Set-top-box and HDMI
- I Mobile Internet Device (MID)
- I PDAs / digital cameras
- I Game console port protection
- I Plug and play protection for motherboards and peripherals
- I Mobile phones - battery and port protection

Part Number Code



Environmental Specifications

| Test | Conditions | Resistance change |
|-----------------------|---------------------------|-------------------|
| Passive aging | +85°C, 1000 hrs | ±5% typical |
| Humidity aging | +85°C, 85%R.H., 168 hours | ±5% typical |
| Thermal shock | +85°C to -40°C, 20times | ±33% typical |
| Resistance to solvent | MIL-STD-202, Method 215 | No change |
| Vibration | MIL-STD-202, Method 201 | No change |

Ambient operating conditions : - 40 °C to +85 °C

Maximum surface temperature of the device in the tripped state is 125 °C



Performance Specification

| Type Number | I_{hold} | I_{trip} | V_{max} | Max. Time to Trip | | I_{max} | P_d typ | $R_{i_{min}}$ | $R_{1_{max}}$ | Package |
|------------------|------------|------------|-----------|-------------------|-------------|-----------|-----------|---------------|---------------|---------|
| | A | A | V_{DC} | Current A | T_{max} S | A | W | Ω | Ω | |
| SMD1812P010TF | 0.1 | 0.3 | 30 | 0.5 | 1.5 | 30 | 0.8 | 0.75 | 15 | 1812 |
| SMD1812P010TF/60 | 0.1 | 0.3 | 60 | 0.5 | 1.5 | 30 | 0.8 | 0.75 | 15 | 1812 |
| SMD1812P014TF | 0.14 | 0.34 | 60 | 1.5 | 0.15 | 30 | 0.8 | 0.65 | 6 | 1812 |
| SMD1812P020TF | 0.2 | 0.4 | 30 | 8 | 0.02 | 30 | 0.8 | 0.35 | 5 | 1812 |
| SMD1812P020TF/60 | 0.2 | 0.4 | 60 | 8 | 0.02 | 30 | 0.8 | 0.35 | 5 | 1812 |
| SMD1812P030TF | 0.3 | 0.6 | 30 | 8 | 0.1 | 30 | 0.8 | 0.25 | 3 | 1812 |
| SMD1812P030TF/60 | 0.3 | 0.6 | 60 | 8 | 0.1 | 30 | 0.8 | 0.25 | 3 | 1812 |
| SMD1812P050TF | 0.5 | 1.0 | 15 | 8 | 0.15 | 30 | 0.8 | 0.15 | 1.0 | 1812 |
| SMD1812P050TF/30 | 0.5 | 1.0 | 30 | 8 | 0.15 | 30 | 0.8 | 0.15 | 1.0 | 1812 |
| SMD1812P050TF/60 | 0.5 | 1.0 | 60 | 8 | 0.15 | 30 | 0.8 | 0.15 | 1.4 | 1812 |
| SMD1812P075TF | 0.75 | 1.5 | 13.2 | 8 | 0.2 | 30 | 0.8 | 0.09 | 0.45 | 1812 |
| SMD1812P075TF/16 | 0.75 | 1.5 | 16 | 8 | 0.2 | 30 | 0.8 | 0.09 | 0.45 | 1812 |
| SMD1812P075TF/24 | 0.75 | 1.5 | 24 | 8 | 0.2 | 30 | 0.8 | 0.09 | 0.45 | 1812 |
| SMD1812P075TF/33 | 0.75 | 1.5 | 33 | 8 | 0.2 | 30 | 0.8 | 0.09 | 0.45 | 1812 |
| SMD1812P110TF | 1.1 | 2.2 | 8 | 8 | 0.3 | 35 | 0.8 | 0.045 | 0.25 | 1812 |
| SMD1812P110TF/16 | 1.1 | 2.2 | 16 | 8 | 0.3 | 35 | 0.8 | 0.05 | 0.25 | 1812 |
| SMD1812P110TF/24 | 1.1 | 2.2 | 24 | 8 | 0.3 | 35 | 0.8 | 0.05 | 0.25 | 1812 |
| SMD1812P110TF/33 | 1.1 | 2.2 | 33 | 8 | 0.3 | 35 | 0.8 | 0.05 | 0.25 | 1812 |
| SMD1812P125TF | 1.25 | 2.5 | 16 | 8 | 0.4 | 35 | 0.8 | 0.05 | 0.14 | 1812 |
| SMD1812P150TF | 1.5 | 3 | 8 | 8 | 0.5 | 35 | 0.8 | 0.04 | 0.16 | 1812 |
| SMD1812P150TF/16 | 1.5 | 3 | 16 | 8 | 0.5 | 35 | 0.8 | 0.04 | 0.16 | 1812 |
| SMD1812P150TF/24 | 1.5 | 3 | 24 | 8 | 0.5 | 35 | 0.8 | 0.04 | 0.16 | 1812 |
| SMD1812P150TF/33 | 1.5 | 3 | 33 | 8 | 0.5 | 35 | 0.8 | 0.04 | 0.16 | 1812 |
| SMD1812P160TF | 1.6 | 2.8 | 8 | 8 | 1 | 35 | 0.8 | 0.03 | 0.13 | 1812 |
| SMD1812P200TF | 2 | 4 | 8 | 8 | 2 | 35 | 0.8 | 0.02 | 0.1 | 1812 |
| SMD1812P200TF/16 | 2 | 4 | 16 | 8 | 2 | 35 | 0.8 | 0.02 | 0.1 | 1812 |
| SMD1812P200TF/24 | 2 | 4 | 24 | 8 | 2 | 35 | 0.8 | 0.02 | 0.1 | 1812 |
| SMD1812P260TF | 2.6 | 5 | 8 | 8 | 2.5 | 35 | 0.8 | 0.01 | 0.05 | 1812 |
| SMD1812P260TF/16 | 2.6 | 5 | 16 | 8 | 2.5 | 35 | 0.8 | 0.01 | 0.05 | 1812 |
| SMD1812P260TF/24 | 2.6 | 5 | 24 | 8 | 2.5 | 35 | 0.8 | 0.01 | 0.05 | 1812 |
| SMD1812P300TF | 3 | 5 | 8 | 8 | 4 | 35 | 0.8 | 0.01 | 0.04 | 1812 |
| SMD1812P300TF/16 | 3 | 5 | 16 | 8 | 4 | 35 | 0.8 | 0.01 | 0.04 | 1812 |
| SMD1812P350TF | 3.5 | 6 | 6 | 10 | 4 | 35 | 2 | 0.008 | 0.03 | 1812 |
| SMD1812P350TF/16 | 3.5 | 6 | 16 | 10 | 4 | 35 | 2 | 0.008 | 0.03 | 1812 |
| SMD1812P400TF | 4 | 7 | 6 | 10 | 4 | 35 | 2 | 0.005 | 0.025 | 1812 |

V_{max} = Maximum operating voltage device can withstand without damage at rated current (I_{max}).
 I_{max} = Maximum fault current device can withstand without damage at rated voltage (V_{max}).
 I_{hold} = Hold Current. Maximum current device will not trip in 25°C still air.
 I_{trip} = Trip Current. Minimum current at which the device will always trip in 25°C still air.
 P_d = Power dissipation when device is in the tripped state in 25°C still air environment at rated voltage.
 $R_{i_{min/max}}$ = Minimum/Maximum device resistance prior to tripping at 25°C.
 $R_{1_{max}}$ = Maximum device resistance is measured one hour post reflow.

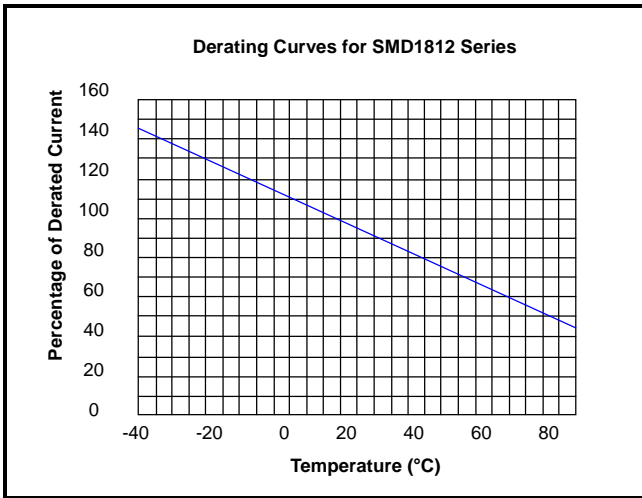


Thermal Derating Chart-Ih(A)

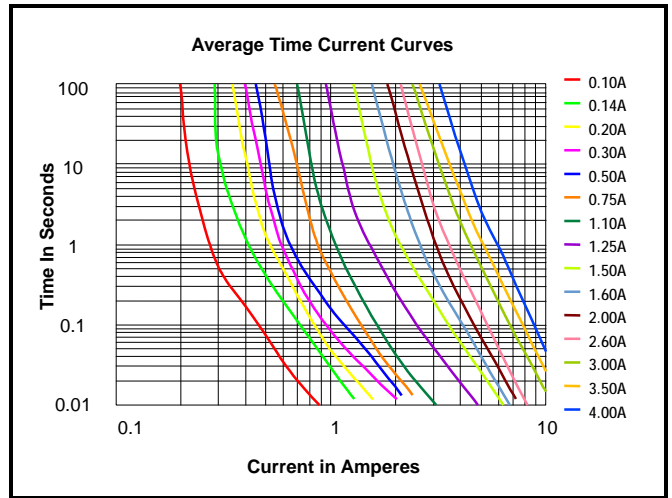
| Part Number | Ambient Operation Temperature | | | | | | | | |
|------------------|-------------------------------|--------|------|-------|-------|-------|-------|-------|-------|
| | -40 °C | -20 °C | 0 °C | 25 °C | 40 °C | 50 °C | 60 °C | 70 °C | 85 °C |
| SMD1812P010TF | 0.16 | 0.14 | 0.12 | 0.10 | 0.08 | 0.07 | 0.06 | 0.05 | 0.03 |
| SMD1812P010TF/60 | 0.16 | 0.14 | 0.12 | 0.10 | 0.08 | 0.07 | 0.06 | 0.05 | 0.03 |
| SMD1812P014TF | 0.23 | 0.19 | 0.17 | 0.14 | 0.12 | 0.10 | 0.09 | 0.08 | 0.06 |
| SMD1812P020TF | 0.29 | 0.26 | 0.23 | 0.20 | 0.17 | 0.15 | 0.14 | 0.12 | 0.10 |
| SMD1812P020TF/60 | 0.29 | 0.26 | 0.23 | 0.20 | 0.17 | 0.15 | 0.14 | 0.12 | 0.10 |
| SMD1812P030TF | 0.44 | 0.39 | 0.35 | 0.30 | 0.26 | 0.23 | 0.21 | 0.18 | 0.15 |
| SMD1812P030TF/60 | 0.44 | 0.39 | 0.35 | 0.30 | 0.26 | 0.23 | 0.21 | 0.18 | 0.15 |
| SMD1812P050TF | 0.59 | 0.57 | 0.55 | 0.50 | 0.45 | 0.43 | 0.35 | 0.30 | 0.23 |
| SMD1812P050TF/30 | 0.59 | 0.57 | 0.55 | 0.50 | 0.45 | 0.43 | 0.35 | 0.30 | 0.23 |
| SMD1812P050TF/60 | 0.59 | 0.57 | 0.55 | 0.50 | 0.45 | 0.43 | 0.35 | 0.30 | 0.23 |
| SMD1812P075TF | 1.10 | 0.99 | 0.87 | 0.75 | 0.63 | 0.57 | 0.49 | 0.45 | 0.35 |
| SMD1812P075TF/16 | 1.10 | 0.99 | 0.87 | 0.75 | 0.63 | 0.57 | 0.49 | 0.45 | 0.35 |
| SMD1812P075TF/24 | 1.10 | 0.99 | 0.87 | 0.75 | 0.63 | 0.57 | 0.49 | 0.45 | 0.35 |
| SMD1812P075TF/33 | 1.10 | 0.99 | 0.87 | 0.75 | 0.63 | 0.57 | 0.49 | 0.45 | 0.35 |
| SMD1812P110TF | 1.60 | 1.45 | 1.28 | 1.10 | 0.92 | 0.83 | 0.71 | 0.66 | 0.52 |
| SMD1812P110TF/16 | 1.60 | 1.45 | 1.28 | 1.10 | 0.92 | 0.83 | 0.71 | 0.66 | 0.52 |
| SMD1812P110TF/24 | 1.60 | 1.45 | 1.28 | 1.10 | 0.92 | 0.83 | 0.71 | 0.66 | 0.52 |
| SMD1812P110TF/33 | 1.60 | 1.45 | 1.28 | 1.10 | 0.92 | 0.83 | 0.71 | 0.66 | 0.52 |
| SMD1812P125TF | 2.00 | 1.75 | 1.52 | 1.25 | 1.00 | 0.95 | 0.90 | 0.75 | 0.53 |
| SMD1812P150TF | 2.10 | 1.96 | 1.77 | 1.50 | 1.23 | 1.09 | 0.95 | 0.82 | 0.61 |
| SMD1812P150TF/16 | 2.10 | 1.96 | 1.77 | 1.50 | 1.23 | 1.09 | 0.95 | 0.82 | 0.61 |
| SMD1812P150TF/24 | 2.10 | 1.96 | 1.77 | 1.50 | 1.23 | 1.09 | 0.95 | 0.82 | 0.61 |
| SMD1812P150TF/33 | 2.10 | 1.96 | 1.77 | 1.50 | 1.23 | 1.09 | 0.95 | 0.82 | 0.61 |
| SMD1812P160TF | 2.30 | 2.05 | 1.88 | 1.60 | 1.26 | 1.12 | 0.98 | 0.84 | 0.63 |
| SMD1812P200TF | 2.88 | 2.61 | 2.25 | 2.00 | 1.80 | 1.66 | 1.45 | 1.09 | 0.80 |
| SMD1812P200TF/16 | 2.88 | 2.61 | 2.25 | 2.00 | 1.80 | 1.66 | 1.45 | 1.09 | 0.80 |
| SMD1812P200TF/24 | 2.88 | 2.61 | 2.25 | 2.00 | 1.80 | 1.66 | 1.45 | 1.09 | 0.80 |
| SMD1812P260TF | 3.90 | 3.42 | 2.96 | 2.60 | 2.33 | 2.07 | 1.94 | 1.35 | 1.00 |
| SMD1812P260TF/16 | 3.90 | 3.42 | 2.96 | 2.60 | 2.33 | 2.07 | 1.94 | 1.35 | 1.00 |
| SMD1812P260TF/24 | 3.90 | 3.42 | 2.96 | 2.60 | 2.33 | 2.07 | 1.94 | 1.35 | 1.00 |
| SMD1812P300TF | 4.15 | 3.76 | 3.46 | 3.00 | 2.55 | 2.28 | 2.01 | 1.61 | 1.33 |
| SMD1812P300TF/16 | 4.15 | 3.76 | 3.46 | 3.00 | 2.55 | 2.28 | 2.01 | 1.61 | 1.33 |
| SMD1812P350TF | 4.84 | 4.39 | 4.04 | 3.50 | 2.98 | 2.66 | 2.35 | 1.88 | 1.55 |
| SMD1812P350TF/16 | 4.84 | 4.39 | 4.04 | 3.50 | 2.98 | 2.66 | 2.35 | 1.88 | 1.55 |
| SMD1812P400TF | 5.80 | 5.20 | 4.60 | 4.00 | 3.35 | 3.12 | 2.75 | 2.45 | 2.10 |



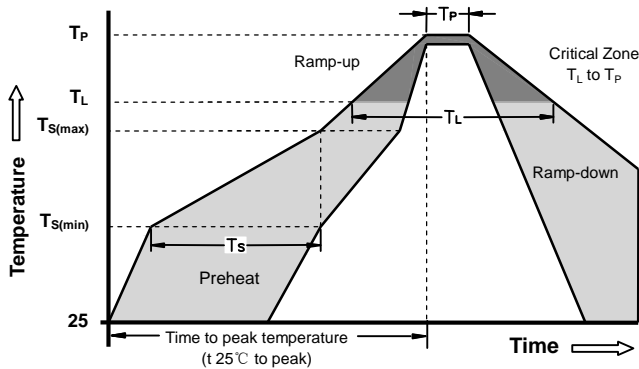
Thermal Derating Curve



Average Time-Current Curve



Soldering Parameters



| Reflow Condition | | Pb - Free assembly |
|--|-----------------------------------|--------------------|
| Pre Heat | -Temperature Min ($T_{s(min)}$) | 150°C |
| | -Temperature Max ($T_{s(max)}$) | 200°C |
| | - Time (min to max) (t_s) | 60 - 180 Seconds |
| Average ramp up rate (Liquids Temp T_L) to peak | | 3°C/second max |
| $T_{S(max)}$ to T_L - Ramp-up Rate | | 3°C/second max |
| Reflow | - Temperature (T_L) (Liquids) | 217°C |
| | - Time (min to max) (t_s) | 60 - 150 Seconds |
| Peak Temperature (T_P) | | 260 +0/-5°C |
| Time within 5°C of actual peak Temperature (t_p) | | 20 - 40 Seconds |
| Ramp-down Rate | | 6°C/second max |
| Time 25°C to peak Temperature (T_P) | | 8 minutes Max |
| Do not exceed | | 260°C |

| Lead style code | Recommended Pad Layout (mm.) |
|-----------------|------------------------------|
| | |

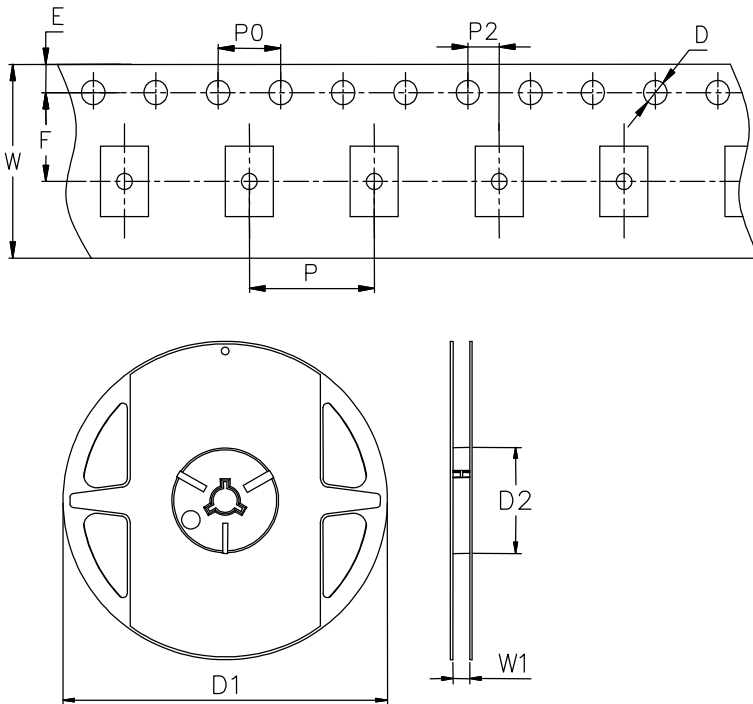


Dimensions

| Type Number | Package Dimensions (mm) | | | | | | | Package Dimensions (in) | | | | | | |
|------------------|-------------------------|------|------|------|------|------|-----|-------------------------|-------|-------|-------|-------|-------|-------|
| | A | | B | | C | | D | A | | B | | C | | D |
| | min | max | min | max | min | max | min | min | max | min | max | min | max | min |
| SMD1812P010TF | 4.37 | 4.73 | 3.07 | 3.41 | 0.50 | 1.10 | 0.3 | 0.172 | 0.186 | 0.121 | 0.134 | 0.02 | 0.043 | 0.012 |
| SMD1812P010TF/60 | 4.37 | 4.73 | 3.07 | 3.41 | 0.50 | 1.10 | 0.3 | 0.172 | 0.186 | 0.121 | 0.134 | 0.02 | 0.043 | 0.012 |
| SMD1812P014TF | 4.37 | 4.73 | 3.07 | 3.41 | 0.50 | 1.10 | 0.3 | 0.172 | 0.186 | 0.121 | 0.134 | 0.02 | 0.043 | 0.012 |
| SMD1812P020TF | 4.37 | 4.73 | 3.07 | 3.41 | 0.50 | 1.10 | 0.3 | 0.172 | 0.186 | 0.121 | 0.134 | 0.02 | 0.043 | 0.012 |
| SMD1812P020TF/60 | 4.37 | 4.73 | 3.07 | 3.41 | 0.50 | 1.10 | 0.3 | 0.172 | 0.186 | 0.121 | 0.134 | 0.02 | 0.043 | 0.012 |
| SMD1812P030TF | 4.37 | 4.73 | 3.07 | 3.41 | 0.50 | 1.10 | 0.3 | 0.172 | 0.186 | 0.121 | 0.134 | 0.02 | 0.043 | 0.012 |
| SMD1812P030TF/60 | 4.37 | 4.73 | 3.07 | 3.41 | 0.50 | 1.10 | 0.3 | 0.172 | 0.186 | 0.121 | 0.134 | 0.02 | 0.043 | 0.012 |
| SMD1812P050TF | 4.37 | 4.73 | 3.07 | 3.41 | 0.40 | 1.00 | 0.3 | 0.172 | 0.186 | 0.121 | 0.134 | 0.016 | 0.039 | 0.012 |
| SMD1812P050TF/30 | 4.37 | 4.73 | 3.07 | 3.41 | 0.40 | 1.00 | 0.3 | 0.172 | 0.186 | 0.121 | 0.134 | 0.016 | 0.039 | 0.012 |
| SMD1812P050TF/60 | 4.37 | 4.73 | 3.07 | 3.41 | 0.50 | 1.10 | 0.3 | 0.172 | 0.186 | 0.121 | 0.134 | 0.02 | 0.043 | 0.012 |
| SMD1812P075TF | 4.37 | 4.73 | 3.07 | 3.41 | 0.50 | 1.10 | 0.3 | 0.172 | 0.186 | 0.121 | 0.134 | 0.02 | 0.043 | 0.012 |
| SMD1812P075TF/16 | 4.37 | 4.73 | 3.07 | 3.41 | 0.50 | 1.10 | 0.3 | 0.172 | 0.186 | 0.121 | 0.134 | 0.02 | 0.043 | 0.012 |
| SMD1812P075TF/24 | 4.37 | 4.73 | 3.07 | 3.41 | 0.60 | 1.30 | 0.3 | 0.172 | 0.186 | 0.121 | 0.134 | 0.024 | 0.051 | 0.012 |
| SMD1812P075TF/33 | 4.37 | 4.73 | 3.07 | 3.41 | 0.60 | 1.30 | 0.3 | 0.172 | 0.186 | 0.121 | 0.134 | 0.024 | 0.051 | 0.012 |
| SMD1812P110TF | 4.37 | 4.73 | 3.07 | 3.41 | 0.40 | 1.00 | 0.3 | 0.172 | 0.186 | 0.121 | 0.134 | 0.016 | 0.039 | 0.012 |
| SMD1812P110TF/16 | 4.37 | 4.73 | 3.07 | 3.41 | 0.40 | 1.00 | 0.3 | 0.172 | 0.186 | 0.121 | 0.134 | 0.016 | 0.039 | 0.012 |
| SMD1812P110TF/24 | 4.37 | 4.73 | 3.07 | 3.41 | 0.60 | 1.30 | 0.3 | 0.172 | 0.186 | 0.121 | 0.134 | 0.024 | 0.051 | 0.012 |
| SMD1812P110TF/33 | 4.37 | 4.73 | 3.07 | 3.41 | 0.60 | 1.30 | 0.3 | 0.172 | 0.186 | 0.121 | 0.134 | 0.024 | 0.051 | 0.012 |
| SMD1812P125TF | 4.37 | 4.73 | 3.07 | 3.41 | 0.40 | 1.00 | 0.3 | 0.172 | 0.186 | 0.121 | 0.134 | 0.016 | 0.039 | 0.012 |
| SMD1812P150TF | 4.37 | 4.73 | 3.07 | 3.41 | 0.50 | 1.10 | 0.3 | 0.172 | 0.186 | 0.121 | 0.134 | 0.02 | 0.043 | 0.012 |
| SMD1812P150TF/16 | 4.37 | 4.73 | 3.07 | 3.41 | 0.50 | 1.10 | 0.3 | 0.172 | 0.186 | 0.121 | 0.134 | 0.02 | 0.043 | 0.012 |
| SMD1812P150TF/24 | 4.37 | 4.73 | 3.07 | 3.41 | 0.50 | 1.10 | 0.3 | 0.172 | 0.186 | 0.121 | 0.134 | 0.02 | 0.043 | 0.012 |
| SMD1812P150TF/33 | 4.37 | 4.73 | 3.07 | 3.41 | 0.80 | 1.50 | 0.3 | 0.172 | 0.186 | 0.121 | 0.134 | 0.031 | 0.059 | 0.012 |
| SMD1812P160TF | 4.37 | 4.73 | 3.07 | 3.41 | 0.50 | 1.10 | 0.3 | 0.172 | 0.186 | 0.121 | 0.134 | 0.02 | 0.043 | 0.012 |
| SMD1812P200TF | 4.37 | 4.73 | 3.07 | 3.41 | 0.50 | 1.10 | 0.3 | 0.172 | 0.186 | 0.121 | 0.134 | 0.02 | 0.043 | 0.012 |
| SMD1812P200TF/16 | 4.37 | 4.73 | 3.07 | 3.41 | 0.50 | 1.10 | 0.3 | 0.172 | 0.186 | 0.121 | 0.134 | 0.02 | 0.043 | 0.012 |
| SMD1812P200TF/24 | 4.37 | 4.73 | 3.07 | 3.41 | 0.80 | 1.50 | 0.3 | 0.172 | 0.186 | 0.121 | 0.134 | 0.031 | 0.059 | 0.012 |
| SMD1812P260TF | 4.37 | 4.73 | 3.07 | 3.41 | 0.80 | 1.50 | 0.3 | 0.172 | 0.186 | 0.121 | 0.134 | 0.031 | 0.059 | 0.012 |
| SMD1812P260TF/16 | 4.37 | 4.73 | 3.07 | 3.41 | 0.80 | 1.50 | 0.3 | 0.172 | 0.186 | 0.121 | 0.134 | 0.031 | 0.059 | 0.012 |
| SMD1812P260TF/24 | 4.37 | 4.73 | 3.07 | 3.41 | 0.80 | 1.50 | 0.3 | 0.172 | 0.186 | 0.121 | 0.134 | 0.031 | 0.059 | 0.012 |
| SMD1812P300TF | 4.37 | 4.73 | 3.07 | 3.41 | 0.80 | 1.50 | 0.3 | 0.172 | 0.186 | 0.121 | 0.134 | 0.031 | 0.059 | 0.012 |
| SMD1812P300TF/16 | 4.37 | 4.73 | 3.07 | 3.41 | 0.80 | 1.50 | 0.3 | 0.172 | 0.186 | 0.121 | 0.134 | 0.031 | 0.059 | 0.012 |
| SMD1812P350TF | 4.37 | 4.73 | 3.07 | 3.41 | 0.80 | 1.50 | 0.3 | 0.172 | 0.186 | 0.121 | 0.134 | 0.031 | 0.059 | 0.012 |
| SMD1812P350TF/16 | 4.37 | 4.73 | 3.07 | 3.41 | 0.80 | 1.50 | 0.3 | 0.172 | 0.186 | 0.121 | 0.134 | 0.031 | 0.059 | 0.012 |
| SMD1812P400TF | 4.37 | 4.73 | 3.07 | 3.41 | 0.80 | 1.50 | 0.3 | 0.172 | 0.186 | 0.121 | 0.134 | 0.031 | 0.059 | 0.012 |



Taping and Reel Specifications



| Symbol | Millimeters | Inches |
|----------|-------------|-------------|
| W | 12.0±0.3 | 0.472±0.012 |
| P | 8.0±0.1 | 0.315±0.004 |
| F | 5.5±0.05 | 0.217±0.002 |
| E | 1.75±0.1 | 0.069±0.004 |
| D | 1.55±0.05 | 0.061±0.002 |
| P0 | 4.0±0.1 | 0.157±0.004 |
| P2 | 2.0±0.05 | 0.079±0.002 |
| D1(max.) | 178.0 | 7.007 |
| D2(min.) | 60 | 2.362 |
| W1 | 12.4±0.5 | 0.488±0.02 |

| Part Number | Halogen Free | Packaging Option | Quantity | Quantity & Packaging Codes |
|---------------|--------------|------------------|----------|----------------------------|
| SMD1812PxxxTF | Yes | Tape and Reel | 1500 | YR |



X-ON Electronics

Largest Supplier of Electrical and Electronic Components

Click to view similar products for [Resettable Fuses - PPTC](#) category:

Click to view products by [Ruilongyuan](#) manufacturer:

Other Similar products are found below :

[RF0077-000](#) [RF3256-000](#) [RF3281-000](#) [RF3301-000](#) [RF3341-000](#) [RF3344-000](#) [RF3382-000](#) [SMD125-2](#) [RF2171-000](#) [RF2531-000](#) [RF2873-000](#) [RF3060-000](#) [TR600-150Q-B-0.5-0.130](#) [RXE090](#) [5E4795/04-1502](#) [TRF250-080T-B-1.0-0.125](#) [SMD100-2](#) [NIS5452MT1TXG](#) [NIS5431MT1TXG](#) [SMD250-2](#) [0ZCM0001FF2G](#) [0ZCM0003FF2G](#) [0ZCM0004FF2G](#) [BK60-017-DZ-E0.6](#) [F95456-000](#) [LVR100S](#) [RS30-090](#) [RS30-110](#) [RS30-600](#) [RS30-700](#) [RS30-800](#) [RS30-900](#) [RS60RB-005](#) [RS60RB-010](#) [RS60RB-020](#) [RS60RB-025](#) [RS60RB-050](#) [RS60RB-075](#) [RS60RB-160](#) [RS60SB-250](#) [ASMD0603-010-30V](#) [ASMD0603-025-16V](#) [ASMD2920-260-24V](#) [BSMD0603-025-12V](#) [BSMD1206-150-12V](#) [BSMD0805-020-33V](#) [BSMD1206-075-13.2V](#) [BSMD2920-400-6V](#) [BSMD2920-300-6V](#) [BSMD2920-700-6V](#)