

REED SWITCH MKA-07101

CONTACT FORM A NORMALLY OPEN CONTACTS

Reed relays, Security, Limit switching, Telecoms, Office equipment

Switching current 0,1 A

Switching power 1 W, VA

Switching voltage 24 V

Pull in range 7...35 AT

Electrical Data

Release range, AT, min	4
Carry current, A	0,3
Breakdown voltage	
V, not less, AC/DC	110/150
Resetting Ratio	0,35...0,95
Contact resistance, Ω , not more	0,2
Operating time including bounce, ms, not more	0,3
Release time including bounce ms, not more	0,1
Capacitance, pF, not more	0,4
Insulation resistance, G Ω , not less	1
Operating frequency, Hz	400
Switching current frequency, kHz, not more	10

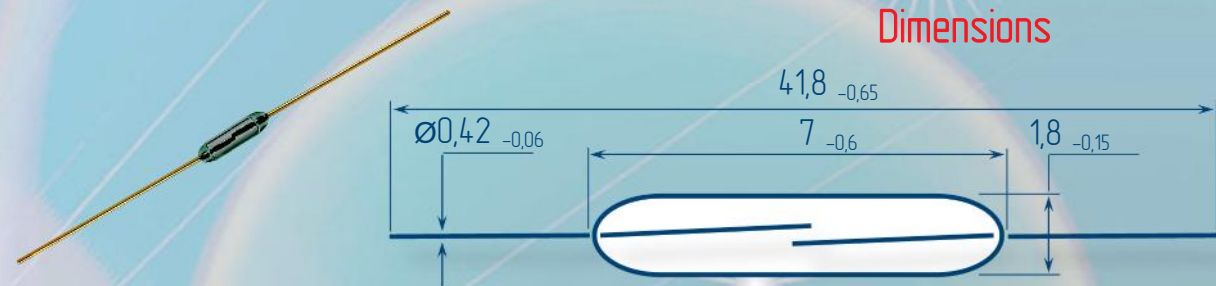
Environmental Data

Contact material	Ru
Life expectancy, switching cycles x10 ⁶ max load power... low load power	1...50
Vibration (1...500 Hz), g, not more	10
Resonant frequency, Hz	12000
Shock (1±0,3) ms, g, not more	150
Weight, g, not more	0,07
Operating temperature, °C	-60...125
Humidity, %, not more	98

Order information

Delivery of reed switches with formed and/or cropped leads and with narrow pull in ranges is available by agreements.

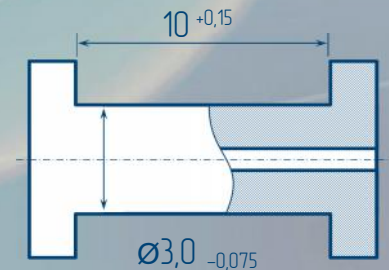
Dimensions



Certificates



Test Coil



5000 turns, wire Ø0,063 mm
coil resistance 580



RYAZAN METAL CERAMICS INSTRUMENTATION PLANT, JSC
51V, Novaya St., 390027, Ryazan, Russia
Phone: +7 (4912) 240-234, Факс: +7 (4912) 240-234 E-mail: ives@rmcip.ru

Update on 19 November 2013



X-ON Electronics

Largest Supplier of Electrical and Electronic Components

Click to view similar products for [Board Mount Hall Effect/Magnetic Sensors](#) category:

Click to view products by [Ryazan](#) manufacturer:

Other Similar products are found below :

[HGPRDT005A](#) [AH1894-FA-7](#) [AH277AZ4-AG1](#) [AV-10448](#) [SS41C](#) [AH1894-Z-7](#) [TLE4946-1L](#) [TLE4976L](#) [SS85CA](#) [BU52003GUL-E2](#)
[AH277AZ4-BG1](#) [AH3376-P-B](#) [TLE4941](#) [TLE4945-2L](#) [AH3360-FT4-7](#) [TLE4941-1](#) [AH374-P-A](#) [SS41-JL](#) [AH1913-W-7](#) [AH3373-P-B](#)
[MA732GQ-Z](#) [MA330GQ-Z](#) [S-57K1NBL2A-M3T2U](#) [S-57P1NBL9S-M3T4U](#) [S-576ZNL2B-L3T2U](#) [S-576ZNL2B-A6T8U](#) [S-57P1NBL0S-](#)
[M3T4U](#) [S-57A1NSL1A-M3T2U](#) [S-57K1RBL1A-M3T2U](#) [S-57P1NBH9S-M3T4U](#) [S-57P1NBH0S-M3T4U](#) [S-57A1NSH1A-M3T2U](#) [S-](#)
[57A1NSH2A-M3T2U](#) [S-57K1NBH1A-M3T2U](#) [S-57A1NNL1A-M3T2U](#) [S-5701BC11B-L3T2U5](#) [S-57GNNL3S-A6T8U](#) [S-57TZ1L1S-](#)
[A6T8U](#) [S-57GSNL3S-A6T8U](#) [S-5716ANDH0-I4T1U](#) [S-57GSNL5S-L3T2U](#) [S-57GDNL3S-L3T2U](#) [S-57GNNL3S-L3T2U](#) [S-57RBNL8S-](#)
[L3T2U](#) [S-57RBNL9S-A6T8U](#) [S-57RB1L8S-L3T2U](#) [S-57GDNL5S-L3T2U](#) [S-57RBNL9S-L3T2U](#) [S-57TZ1L1S-L3T2U](#) [S-57TZNL1S-](#)
[A6T8U](#)