

# REED SWITCH MKA-14103

# CONTACT FORM A NORMALLY OPEN CONTACTS

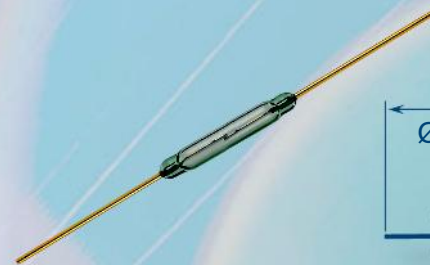
Reed relays, Security, Limit switching, Telecoms, Office equipment

Switching current 0,5 A

Switching power 10 W, VA

Switching voltage 100 V

Pull in range 8...35 AT



## Electrical Data

Release range, AT, min	4
Carry current, A	1,0
Breakdown voltage	less 20 A more 20 A
V, not less, AC/DC	160/220 180/250
Resetting Ratio	0,35...0,9
Contact resistance, $\Omega$ , not more	0,1
Operating time including bounce, ms, not more	1
Release time including bounce ms, not more	0,4
Capacitance, pF, not more	0,7
Insulation resistance, G $\Omega$ , not less	10
Operating frequency, Hz	100
Switching current frequency, kHz, not more	10

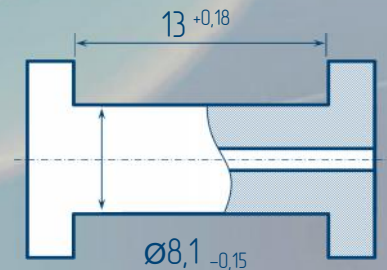
## Environmental Data

Contact material	Ru
Life expectancy, switching cycles x10 <sup>6</sup> max load power... low load power	0,5...100
Vibration (1...2000 Hz), g, not more	40
Resonant frequency, Hz	4000
Shock (1±0,3) ms, g, not more	150
Weight, g, not more	0,14
Operating temperature, °C	-60...155
Humidity, %, not more	98

## Certificates



## Test Coil



5000 turns, wire  $\varnothing 0,063$  mm  
coil resistance 870

## Order information

Delivery of reed switches with formed and/or cropped leads and with narrow pull in ranges is available by agreements.

## X-ON Electronics

Largest Supplier of Electrical and Electronic Components

*Click to view similar products for [Board Mount Hall Effect/Magnetic Sensors](#) category:*

*Click to view products by [Ryazan](#) manufacturer:*

Other Similar products are found below :

[HGPRDT005A](#) [AH277AZ4-AG1](#) [AV-10448](#) [HMC1041Z-TR](#) [SS41C](#) [TLE4917](#) [TLE4946-1L](#) [50017859-003](#) [TY-13101](#) [TLE4976L](#)  
[SS85CA](#) [BU52002GUL-E2](#) [BU52003GUL-E2](#) [AH277AZ4-BG1](#) [TLE49614MXTSA1](#) [AH3376-P-B](#) [TLE4941](#) [AH211Z4-AG1](#) [AH3360-](#)  
[FT4-7](#) [TLE4941-1](#) [AH374-P-A](#) [AH1913-W-7](#) [AH3373-P-B](#) [TLE9852QXXUMA1](#) [MA732GQ-Z](#) [MA330GQ-Z](#) [S-57K1NBL2A-M3T2U](#) [S-](#)  
[57P1NBL9S-M3T4U](#) [S-576ZNL2B-L3T2U](#) [S-576ZNL2B-A6T8U](#) [S-57P1NBL0S-M3T4U](#) [S-57A1NSL1A-M3T2U](#) [S-57K1RBL1A-M3T2U](#)  
[S-57P1NBH9S-M3T4U](#) [S-57P1NBH0S-M3T4U](#) [S-57A1NSH1A-M3T2U](#) [S-57A1NSH2A-M3T2U](#) [S-57K1NBH1A-M3T2U](#) [S-57A1NNL1A-](#)  
[M3T2U](#) [S-5701BC10B-L3T2U5](#) [S-5701BC11B-L3T2U5](#) [S-57GNNL3S-A6T8U](#) [S-57TZ1L1S-A6T8U](#) [S-57GSNL3S-A6T8U](#) [S-](#)  
[5716ANDH0-I4T1U](#) [S-57GSNL5S-L3T2U](#) [S-57GDNL3S-L3T2U](#) [S-57GNNL3S-L3T2U](#) [S-57RBNL8S-L3T2U](#) [S-57RBNL9S-A6T8U](#)