

# REED SWITCH MKA-14103

# CONTACT FORM A NORMALLY OPEN CONTACTS

Reed relays, Security, Limit switching, Telecoms, Office equipment

Switching current 0,5 A

Switching power 10 W, VA

Switching voltage 100 V

Pull in range 8...35 AT

## Electrical Data

Release range, AT, min	4
Carry current, A	1,0
Breakdown voltage	less 20 A more 20 A
V, not less, AC/DC	160/220 180/250
Resetting Ratio	0,35...0,9
Contact resistance, $\Omega$ , not more	0,1
Operating time including bounce, ms, not more	1
Release time including bounce ms, not more	0,4
Capacitance, pF, not more	0,7
Insulation resistance, G $\Omega$ , not less	10
Operating frequency, Hz	100
Switching current frequency, kHz, not more	10

## Environmental Data

Contact material	Ru
Life expectancy, switching cycles $\times 10^6$ max load power... low load power	0,5...100
Vibration (1...2000 Hz), g, not more	40
Resonant frequency, Hz	4000
Shock (1 $\pm$ 0,3) ms, g, not more	150
Weight, g, not more	0,14
Operating temperature, $^{\circ}\text{C}$	-60...155
Humidity, %, not more	98

## Order information

Delivery of reed switches with formed and/or cropped leads and with narrow pull in ranges is available by agreements.

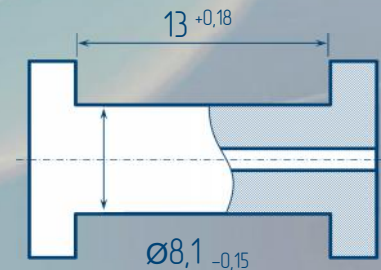
## Dimensions



## Certificates



## Test Coil



5000 turns, wire  $\varnothing 0,063$  mm  
coil resistance 870



RYAZAN METAL CERAMICS INSTRUMENTATION PLANT, JSC  
51V, Novaya St., 390027, Ryazan, Russia  
Phone: +7 (4912) 240-234, Факс: +7 (4912) 240-234 E-mail: ives@rmcip.ru

Update on 19 November 2013



## X-ON Electronics

Largest Supplier of Electrical and Electronic Components

*Click to view similar products for [Industrial Hall Effect/Magnetic Sensors](#) category:*

*Click to view products by [Ryazan](#) manufacturer:*

Other Similar products are found below :

[GT-14114](#) [GT-14123](#) [GTN2C15C](#) [GT-12076](#) [GT-14049](#) [GT-14067](#) [GT-14132](#) [GT-18030](#) [MZ07A108](#) [PST360G2-1S-C0000-ERA360-05K](#)  
[MZC1-2V2PS-KP0](#) [PSC360G2-F1P-C0000-ERA360-05K-200](#) [115L 9E 502 W06017](#) [115L 5,2E 502 W06017](#) [115L 14E 502 W06017](#)  
[103SR14A-1](#) [55100-3H-04-A](#) [MZT7-03VPS-KW0](#) [MZT8-03VPS-KW0](#) [A1326LLHLT-T](#) [ACS770LCB-100U-PFF-T](#) [55505-00-02-B](#) [GN](#)  
[55.2-ND-15-3](#) [GN 55.2-ND-18-3](#) [GN 55.2-ND-4-3](#) [GN 55.2-ND-8-3](#) [GN 55.2-SC-10-3](#) [GN 55.4-ND-10-7,5-2](#) [GN 55.4-ND-12-9,5-2,5](#) [GN](#)  
[55.4-ND-26-20,3-5](#) [GN 55.4-ND-7,5-4-1,5](#) [101MG7-BP](#) [103SR18-1](#) [A1324LUA-T](#) [MXM1120KIT](#) [MXM1120SOKIT](#) [A3212EUA-T](#)  
[AA006-02E](#) [55140-3H-03-A](#) [55100-2M-02-A](#) [MM12-60APS-ZUK](#) [ACX04-F99-I-V15](#) [GN 55.1-SC-24-11.5-4](#) [MZA70155](#) [MZR40158](#)  
[PW520000](#) [ADH025-00E](#) [MZT7-03VPS-KP0](#) [MZT8-03VPS-KR0](#) [MZT8-03VPS-KP0](#)