

REED SWITCH MKA-16101

CONTACT FORM A NORMALLY OPEN CONTACTS

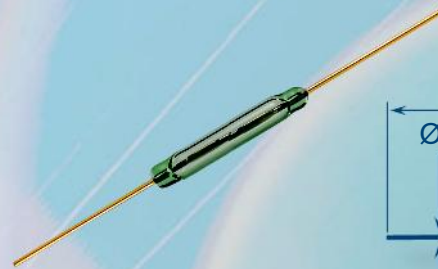
x

Switching current 0,5 A

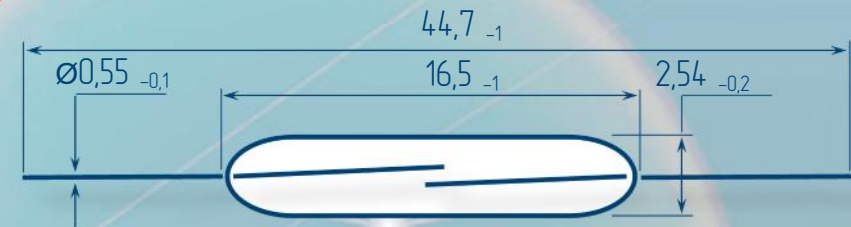
Switching power 10 W, VA

Switching voltage 100 V

Pull in range 10...50 AT



Dimensions



Electrical Data

Release range, AT, min	5
Carry current, A	0,5
Breakdown voltage	
V, not less, AC/DC	160/220
Resetting Ratio	0,35...0,95
Contact resistance, Ω , not more	0,1
Operating time including bounce, ms, not more	0,6
Release time including bounce ms, not more	0,4
Capacitance, pF, not more	0,3
Insulation resistance, G Ω , not less	1
Operating frequency, Hz	400
Switching current frequency, kHz, not more	10

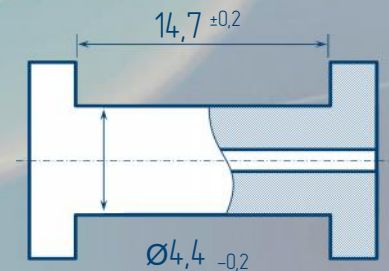
Environmental Data

Contact material	Ru
Life expectancy, switching cycles x10 ⁶ max load power... low load power	0,1...100
Vibration (1...2000 Hz), g, not more	10
Resonant frequency, Hz	3000
Shock (1±0,3) ms, g, not more	150
Weight, g, not more	0,16
Operating temperature, °C	-60...125
Humidity, %, not more	98

Certificates



Test Coil



5000 turns, wire Ø0,063 mm
coil resistance 620

Order information

Delivery of reed switches with formed and/or cropped leads and with narrow pull in ranges is available by agreements.

X-ON Electronics

Largest Supplier of Electrical and Electronic Components

Click to view similar products for [Board Mount Hall Effect/Magnetic Sensors](#) category:

Click to view products by [Ryazan](#) manufacturer:

Other Similar products are found below :

[HGPRDT005A](#) [AH1894-FA-7](#) [AH277AZ4-AG1](#) [AV-10448](#) [SS41C](#) [AH1894-Z-7](#) [TLE4946-1L](#) [TLE4976L](#) [SS85CA](#) [BU52003GUL-E2](#)
[AH277AZ4-BG1](#) [AH3376-P-B](#) [TLE4941](#) [TLE4945-2L](#) [AH3360-FT4-7](#) [TLE4941-1](#) [AH374-P-A](#) [SS41-JL](#) [AH1913-W-7](#) [AH3373-P-B](#)
[MA732GQ-Z](#) [MA330GQ-Z](#) [S-57K1NBL2A-M3T2U](#) [S-57P1NBL9S-M3T4U](#) [S-576ZNL2B-L3T2U](#) [S-576ZNL2B-A6T8U](#) [S-57P1NBL0S-](#)
[M3T4U](#) [S-57A1NSL1A-M3T2U](#) [S-57K1RBL1A-M3T2U](#) [S-57P1NBH9S-M3T4U](#) [S-57P1NBH0S-M3T4U](#) [S-57A1NSH1A-M3T2U](#) [S-](#)
[57A1NSH2A-M3T2U](#) [S-57K1NBH1A-M3T2U](#) [S-57A1NNL1A-M3T2U](#) [S-5701BC11B-L3T2U5](#) [S-57GNNL3S-A6T8U](#) [S-57TZ1L1S-](#)
[A6T8U](#) [S-57GSNL3S-A6T8U](#) [S-5716ANDH0-I4T1U](#) [S-57GSNL5S-L3T2U](#) [S-57GDNL3S-L3T2U](#) [S-57GNNL3S-L3T2U](#) [S-57RBNL8S-](#)
[L3T2U](#) [S-57RBNL9S-A6T8U](#) [S-57RB1L8S-L3T2U](#) [S-57GDNL5S-L3T2U](#) [S-57RBNL9S-L3T2U](#) [S-57TZ1L1S-L3T2U](#) [S-57TZNL1S-](#)
[A6T8U](#)